



INSTALLATION INSTRUCTIONS

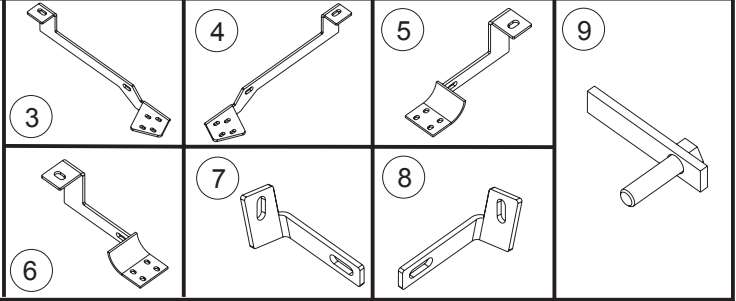
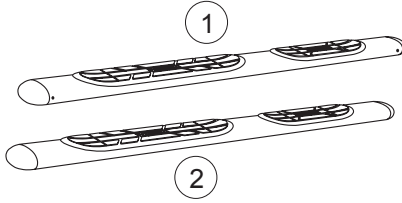
APPLICATION: 2008 TOYOTA HIGHLANDER

AUTOMOTIVE PRODUCTS, INC.

MOUNT KIT
22-1825

CHROME
22-0050, 22-5050

BLACK
22-0055, 22-5055



ITEM	QTY	CONTENTS	TOOLS
1,2	2	OVAL TUBE, PASSENGER (1) AND DRIVER (2) (PURCHASED SEPARATELY)	3/4" SOCKET 9/16" SOCKET 9/16" WRENCH 7/16" SOCKET RATCHET RATCHET EXTENSION TORQUE WRENCH
3,4	2	FRONT BRACKET, PASSENGER (3) AND DRIVER (4)	
5,6	2	REAR BRACKET, PASSENGER (5) AND DRIVER (6)	
7,8	4	SUPPORT BRACE, PASSENGER (7) AND DRIVER (8)	
9	2	1/2" BOLT PLATE ASSEMBLY	
10	2	1/2" FLAT WASHER	
11	2	1/2" LOCK WASHER	
12	2	1/2-13 HEX NUT	
13	6	3/8-16 BRIDGE WELD NUT	
14	8	3/8-16 X 1.25" HEX HEAD BOLT	
15	2	3/8-16 X .75" HEX HEAD BOLT	
16	2	3/8" INTERNAL TOOTH LOCK WASHER	
17	14	3/8" FLAT WASHER	
18	8	3/8" LOCK WASHER	
19	8	3/8-16 HEX NUT	
20	12	1/4-20 X .75 T-HEAD BOLT	
21	12	1/4" FLAT WASHER	
22	12	1/4-20 NYLON INSERT LOCK NUT	

- STEP 1. Remove the contents from box and check for damage. Verify all parts are present. Read instructions completely before beginning.
- STEP 2. Remove rubber plugs from rear mounting locations. Thread 3/8-16 x 1.25" hex head bolt through bridge weld nut. Insert assembled 3/8" bolt plate and 1/2" bolt plate as shown. **SEE FIGURE 1.**
- STEP 3. Attach the rear bracket to the 1/2" bolt plate as shown. Attach the support brace to the assembled 3/8" bolt plate as shown. Leave loose. **SEE FIGURE 1.**
- STEP 4. Attach support brace to the rear brackets using 3/8" fasteners as shown. **SEE FIGURE 1.**
- STEP 5. Assemble support brace as shown in figure 2 leaving fasteners very loose. **NOTE:** Protruding end of bridge nut must face up.
- STEP 6. Remove rubber plugs from front mounting locations. Thread 3/8-16 x 1.25" hex head bolt through bridge weld nut. Insert assembled 3/8" bolt plate into inner hole and slide the bridge weld nut of the support brace assembly into outer hole. Be sure to keep the bridge nut assembled so as to not lose bridge nut in rocker panel.
- STEP 7. Attach front bracket to bolt plate and then to support brace using 3/8" fasteners. **SEE FIGURE 3.**
- STEP 8. Slide T-head bolts on step bar as shown (3 per slot, 6 per bar). Place step bar on saddle with long step pad forward and end cap screw facing inward. Assemble with 1/4" fasteners. **SEE FIGURES 4 AND 5.**
- STEP 9. Make sure step bar and brackets are properly aligned with vehicle and tighten fasteners. Recommended torque values are 64 FT.LBS. for 1/2" fasteners, 26 FT.LBS. for 3/8" fasteners, 7 FT. LBS for 1/4" fasteners.
- STEP 10. Repeat installation for passenger side.

FINISH PROTECTION

Westin products have a high quality finish that must be cared for like any other exposed finish on the vehicle. Protect the finish with a non-abrasive automotive wax, (e.g. Pure Carnauba) on a regular basis. The use of any soap, polish or wax that contains an abrasive is detrimental, as the compounds scratch the finish and open it to corrosion.

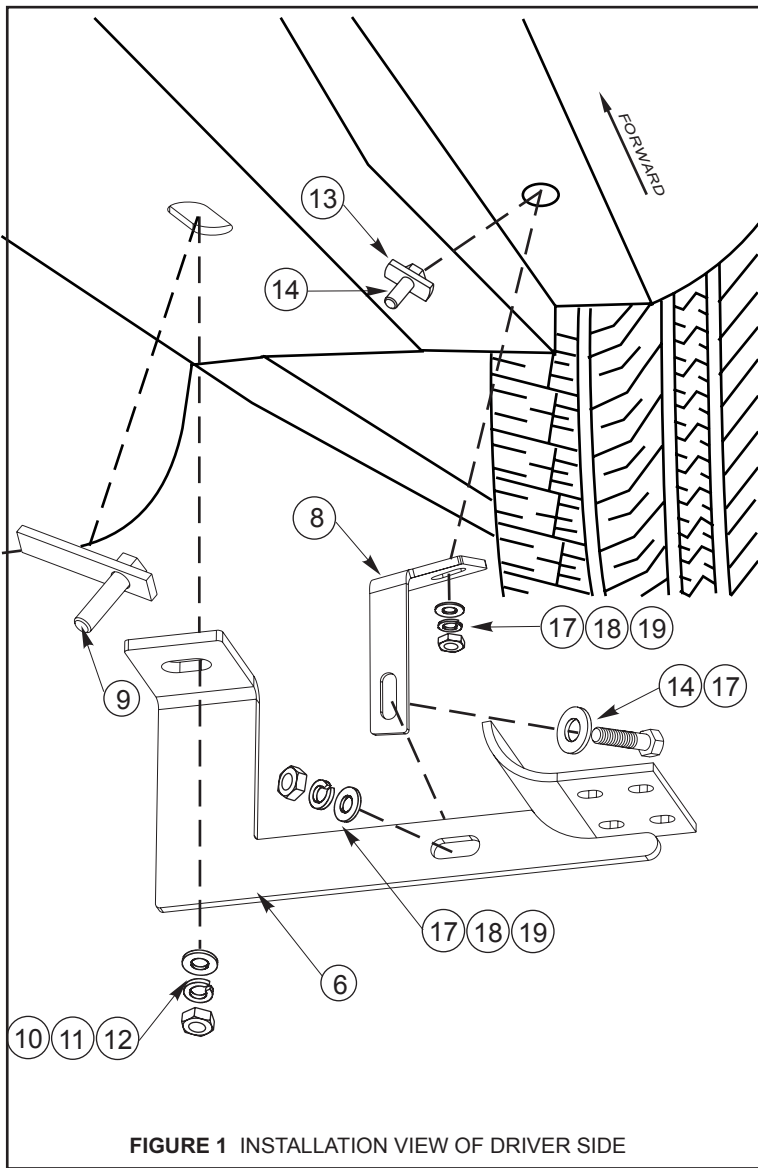


FIGURE 1 INSTALLATION VIEW OF DRIVER SIDE

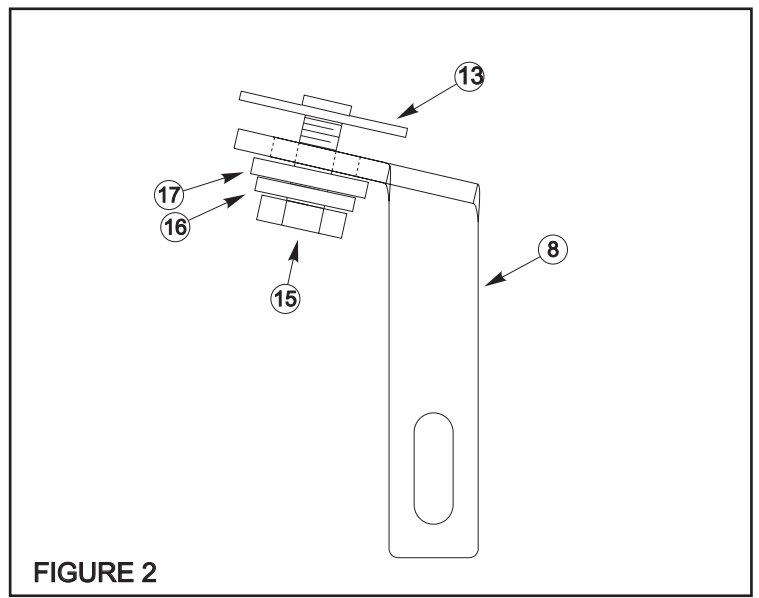


FIGURE 2

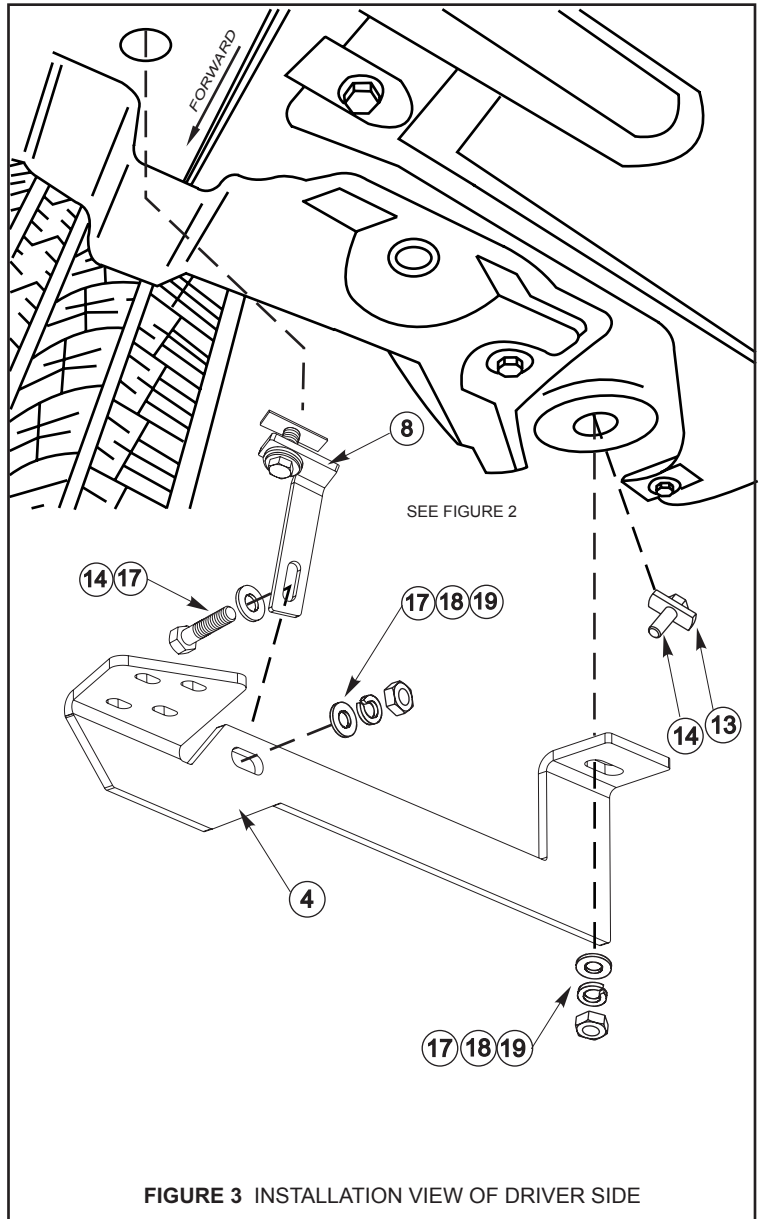


FIGURE 3 INSTALLATION VIEW OF DRIVER SIDE

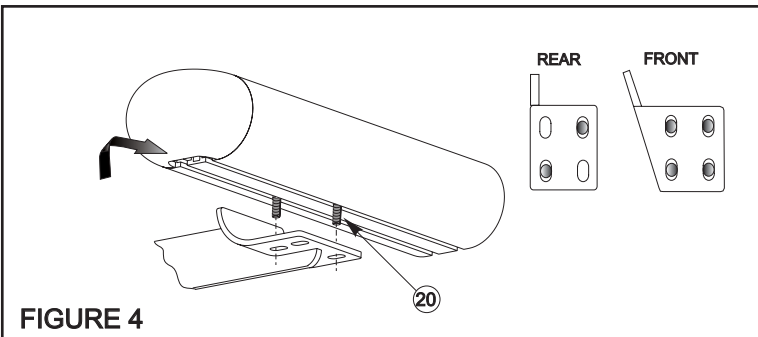


FIGURE 4

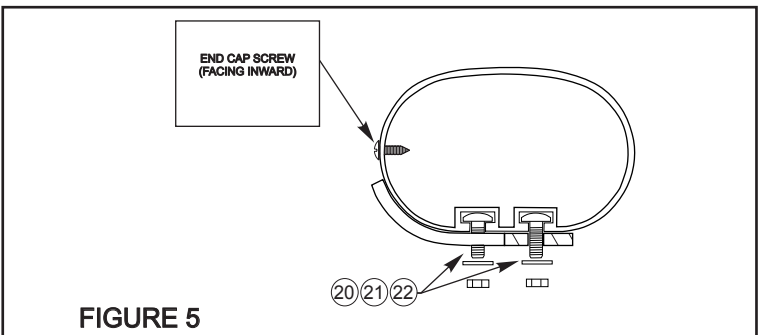


FIGURE 5