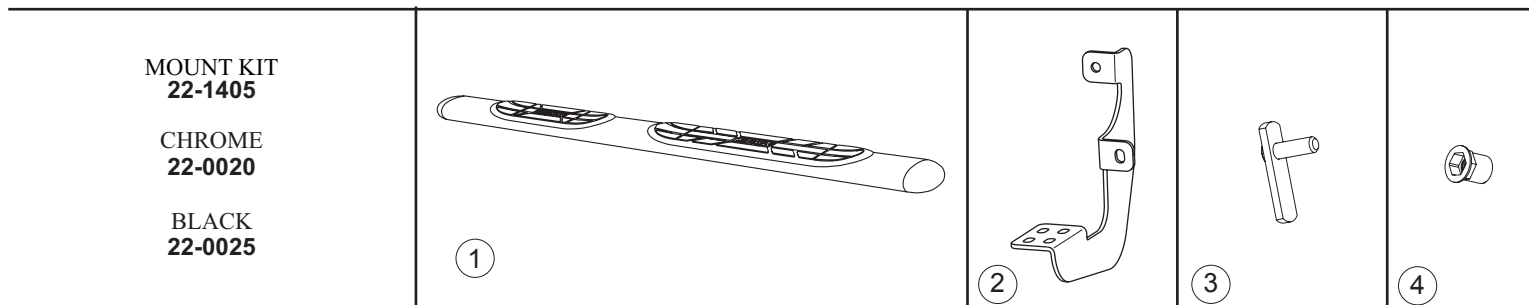




INSTALLATION INSTRUCTIONS

APPLICATION: 2004-UP DODGE DURANGO

AUTOMOTIVE PRODUCTS, INC.



ITEM	QTY	CONTENTS	TOOLS
1	2	STEP BAR (PURCHASED SEPARATELY)	9/16" SOCKET 9/16" WRENCH 7/16" SOCKET 7/16" WRENCH PLIERS RATCHET TORQUE WRENCH
2	4	BRACKET	
3	4	BOLT PLATE ASSEMBLY	
4	4	3/8-16 X 1.00" HEX HEAD BOLT	
5	8	3/8" FLAT WASHER	
6	8	3/8" LOCK WASHER	
7	8	3/8-16" HEX NUT	
8	4	3/8-16 RIV NUT	
9	16	1/4-20 X .75 T-HEAD BOLT	
10	16	1/4" FLAT WASHER	
11	16	1/4-20 NYLON INSERT LOCK NUT	

- STEP 1. Remove contents from box and check for damage. Verify all parts are present. Read instructions completely before beginning.
- STEP 2. Insert rivnuts as shown. **SEE FIGURE 2.**
- STEP 3. Separate trim from rocker panel and insert bolt plates as shown. Leave loose. **SEE FIGURES 1 AND 2.**
- STEP 4. Loosely attach brackets as shown. **SEE FIGURE 3.** Tighten top bolt to crimp rivnut until increased resistance is felt. Verify rivnut is not loose in hole, otherwise re-tighten. Hold bolt plate parallel to rocker panel and tighten bottom nut. **SEE FIGURE 4.**
- STEP 5. Re-attach trim panel as shown. **SEE FIGURE 4.**
- STEP 6. Slide T-head bolts on step bar as shown (4 per slot, 8 per bar, 4 per bracket). Place step bar on saddle with long step pad forward and end cap screw facing inward. Assemble with 1/4" fasteners. **SEE FIGURES 5 AND 6.**
- STEP 7. Make sure step bar and brackets are properly aligned. Tighten and torque 3/8" fasteners to 30 FT. LBS. and 1/4" fasteners to 9 FT. LBS.
- STEP 8. Repeat for passenger side.

FINISH PROTECTION

Westin products have a high quality finish that must be cared for like any other exposed finish on the vehicle. Protect the finish with a non-abrasive automotive wax, (e.g. Pure Carnauba) on a regular basis. The use of any soap, polish or wax that contains an abrasive is detrimental, as the compounds scratch the finish and open it to corrosion.

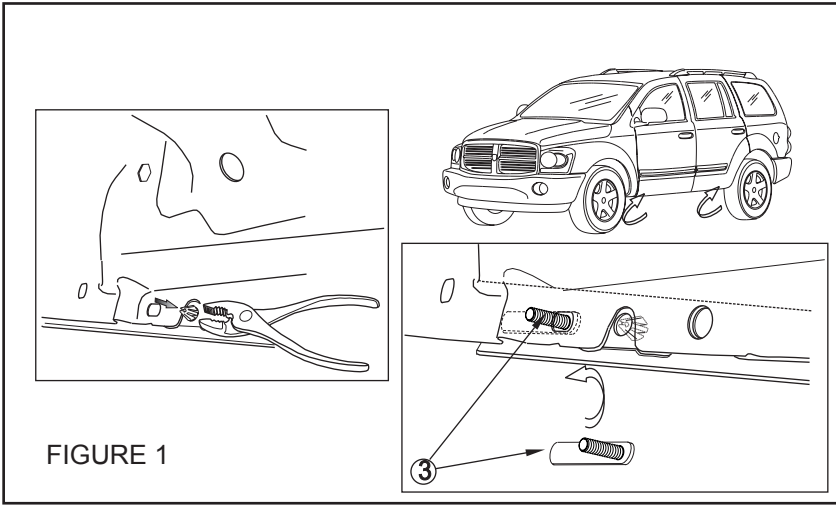


FIGURE 1

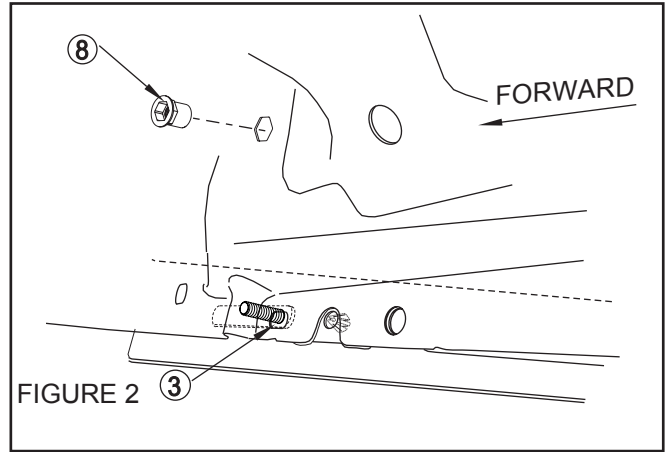


FIGURE 2

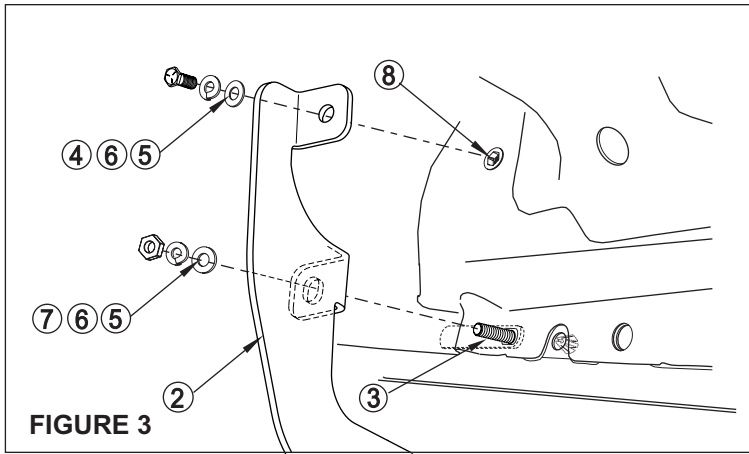


FIGURE 3

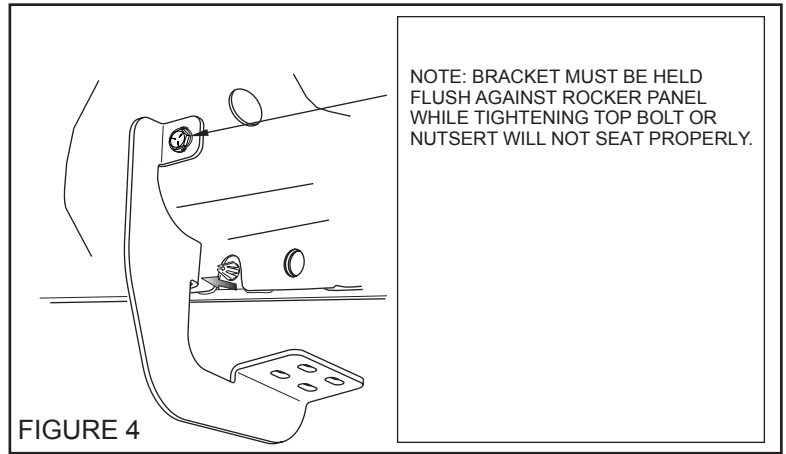


FIGURE 4

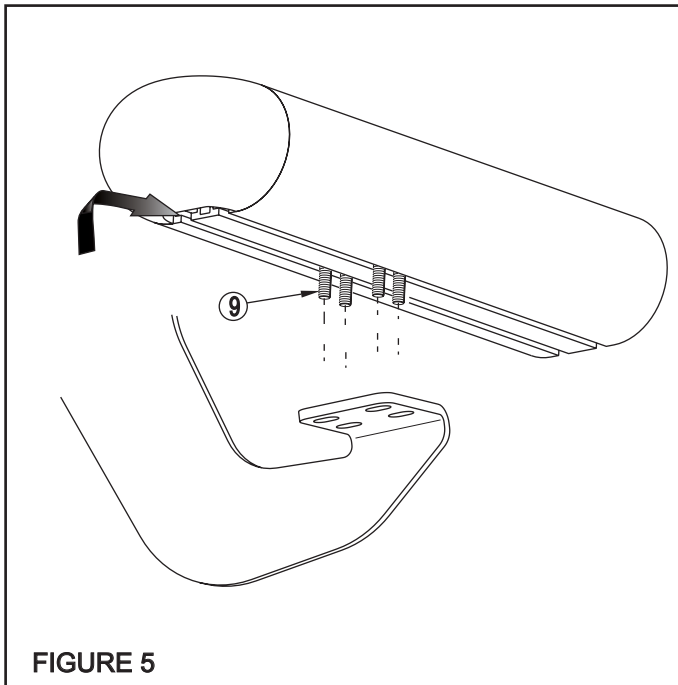


FIGURE 5

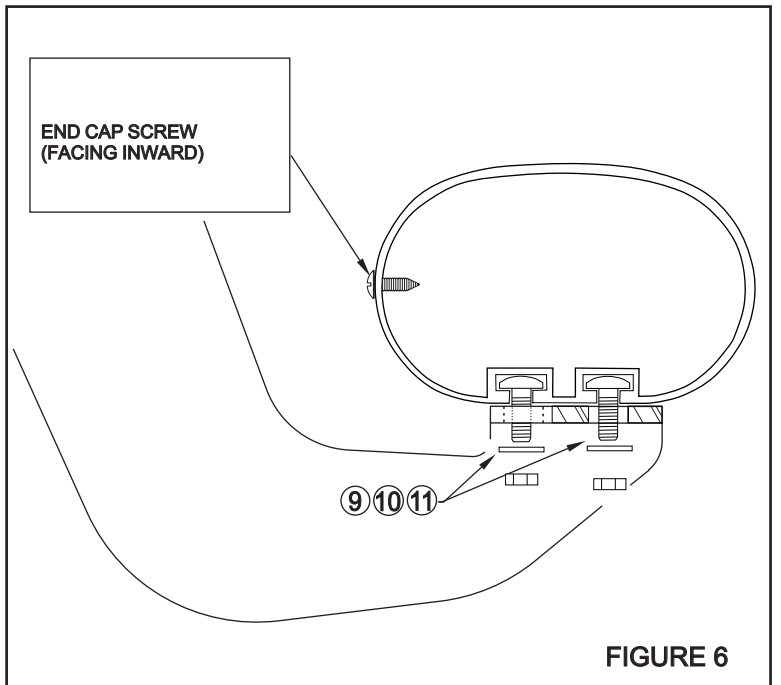


FIGURE 6