



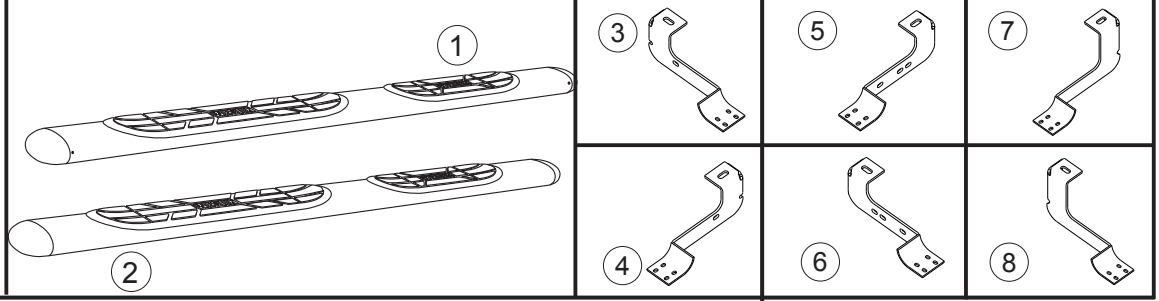
SIGNATURE OF QUALITY

INSTALLATION INSTRUCTIONS

APPLICATION: 2001-11 CHEVY SILVERADO / GMC SIERRA 1500/2500/3500 HD CREW CAB

AUTOMOTIVE PRODUCTS, INC.

MOUNT KIT
22-1075
22-0040, 22-5040
22-0045, 22-5045
22-6040, 22-6045



ITEM	QTY	CONTENTS	TOOLS
1,2	2	STEP BAR, PASSENGER (1) AND DRIVER (2) (SOLD SEPARATELY)	10MM SOCKET 18MM SOCKET RATCHET TORQUE WRENCH
3,4	2	FRONT BRACKET, PASSENGER (3) AND DRIVER (4)	
5,6	2	CENTER BRACKET, PASSENGER (5) AND DRIVER (6)	
7,8	2	REAR BRACKET, PASSENGER (7) AND DRIVER (8)	
9	6	M6 BOLT PLATES (INCLUDED WITH STEP TUBES)	
10	24	M6 FLAT WASHERS (INCLUDED WITH STEP TUBES)	
11	24	M6 LOCK NUTS (INCLUDED WITH STEP TUBES)	

- STEP 1. Remove contents from box and check for damage. Verify all parts are present. Read instructions completely before beginning.
- STEP 2. Remove existing body mount bolts as shown. DO NOT DISCARD!
- STEP 3. Install brackets as shown. Hand tighten. **SEE FIGURE 1.**
- STEP 4. Attach step bars to the mounting brackets using the M6 hardware included with the step bars. **SEE FIGURE 2,3,4 (For 6" tubes see sheet included with tubes for further installation instructions.)**
- STEP 5. Make sure step bar and brackets are properly aligned and tighten fasteners. Recommended torque values are 74 Ft.Lbs. for existing factory 12mm bolts and 15-20 FT. Lbs. for M6 fasteners.
- STEP 6. Repeat installation for opposite side.

FINISH PROTECTION

Westin products have a high quality finish that must be cared for like any other exposed finish on the vehicle. Protect the finish with a non-abrasive automotive wax, (e.g. Pure Carnuba) on a regular basis. The use of any soap, polish or wax that contains an abrasive is detrimental, as the compounds scratch the finish and open it to corrosion.

