



SIGNATURE OF QUALITY

AUTOMOTIVE PRODUCTS, INC.

INSTALLATION INSTRUCTIONS

APPLICATION: 09-14 DODGE RAM 1500 CREW/ QUAD CAB, 10-14 DODGE RAM 2500/3500 HD CREW CAB
APP PART # 21-53550, 21-53555, 21-53560, 21-53565
PRO TRAXX 5 STEP BARS

ITEM	QUANTITY	DESCRIPTION	TOOLS NEEDED
1,2	2	STEP BARS (1) DRIVERS SIDE, (2) PASSENGER SIDE	16MM SOCKET
3	3	DRIVERS SIDE FRONT/CENTER, REAR PASSENGER SIDE MOUNTING BRACKETS	18MM SOCKET
4	3	PASSENGER SIDE FRONT CENTER, REAR DRIVERS SIDE MOUNTING BRACKETS	HEX KEY TOOL (INCLUDED)
5	6	M12 BOLT/ M10 NUT PLATES	TORQUE WRENCH
6	6	M12 FLAT WASHERS	RATCHET
7	6	M12 LOCK WASHERS	
8	6	M12 HEX NUTS	
9	6	PLASTIC RETAINERS	
10	7*	M10 RIV CERTS	
11	12	M10 X 30MM HEX HEAD CAP SCREWS	
12	12	M10 FLAT WASHERS	
13	12	M10 LOCK WASHERS	
14	12	M10 X 25MM BUTTON HEAD CAP SCREWS (STAINLESS STEEL)	
15	12	M10 FLAT WASHERS (STAINLESS STEEL)	
16	12	M10 INTERNAL TOOTHED LOCK WASHERS (STAINLESS STEEL)	

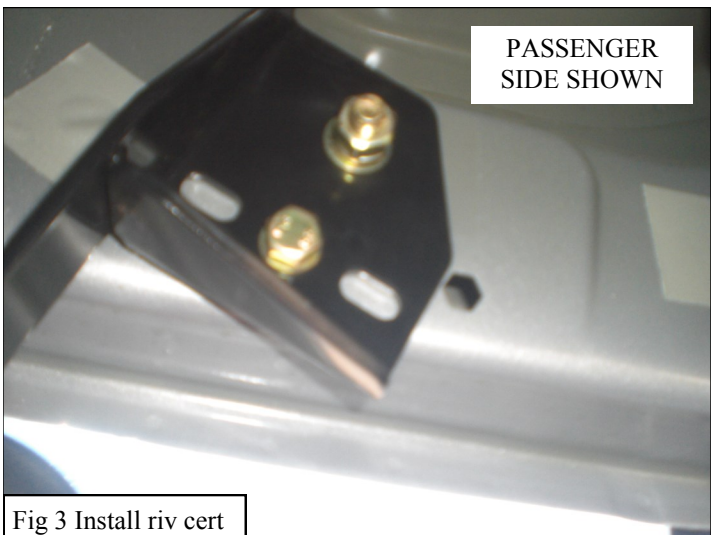
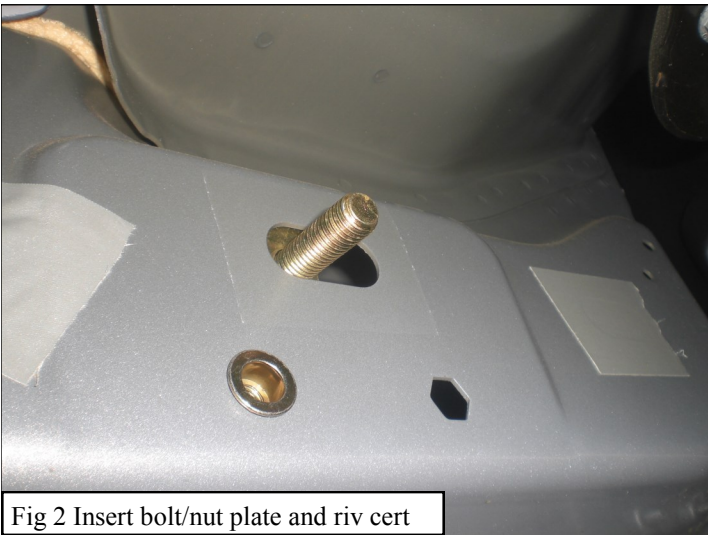
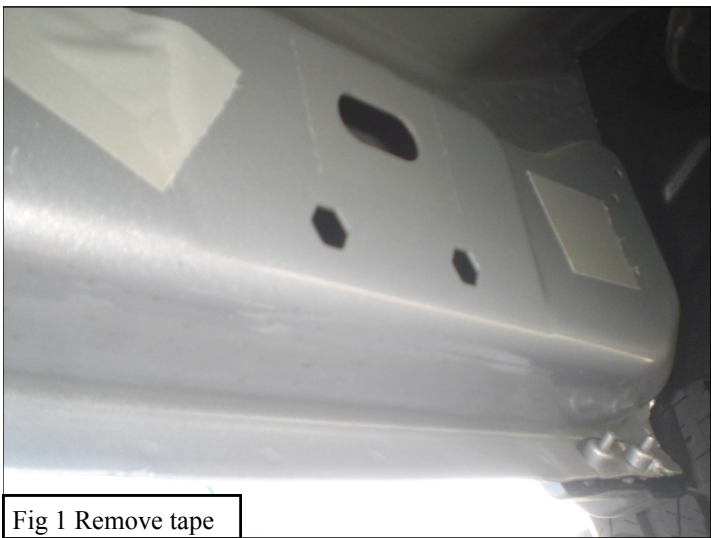
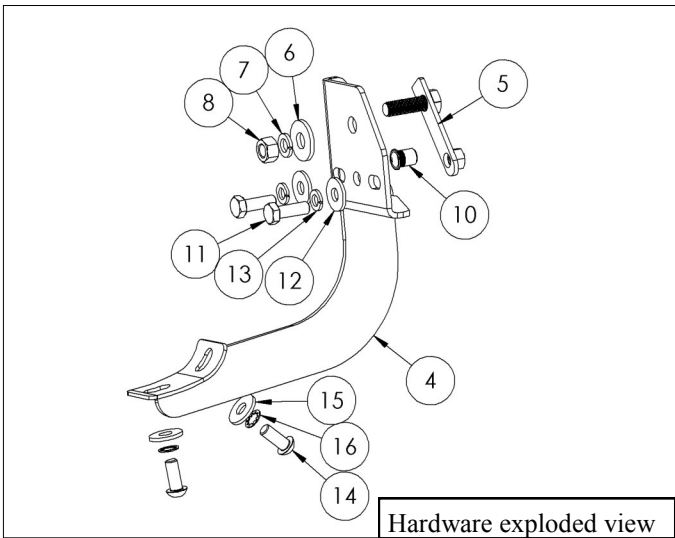
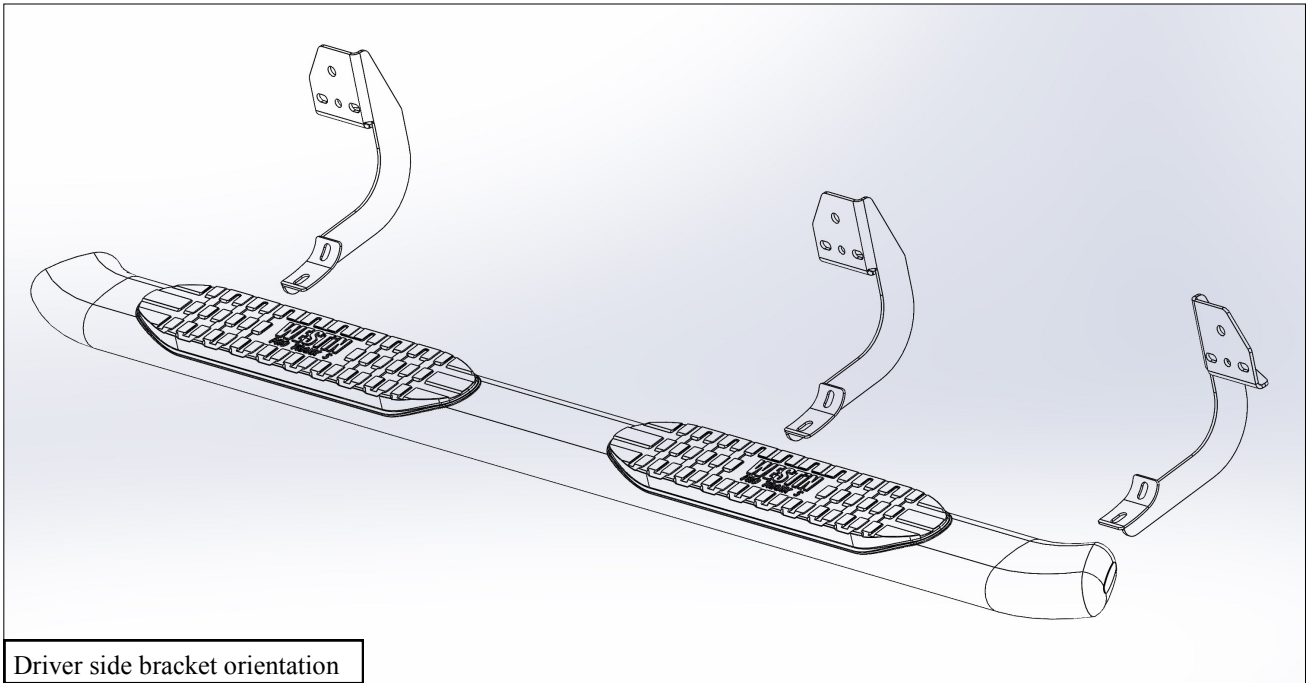
ANTI-SEIZE LUBRICANT MUST BE USED ON ALL STAINLESS STEEL FASTENERS TO PREVENT THREAD DAMAGE AND GALLING

*Note: Only six riv certs will be used for this install.

1. Remove contents from box, verify if all parts listed are present and free from damage. Carefully read and understand all instructions before attempting installation.
2. Starting on the drivers side of the vehicle, locate the square tape covering the factory holes in the rocker panel *FIG 1*. Insert (1) M12 bolt plate (item 5) into the rocker panel and thread on (1) plastic retainer (item 9) to the M12 bolt to keep it from falling into the rocker panel *FIG 2*.
3. Take (1) M10 riv cert (item 10) and place it into the lower left hexagonal hole *FIG 2*. To install the riv cert take the drivers side front mounting bracket and attach it to the previously installed M12 bolt/M10 nut plate using (1) M12 flat washer (item 6), (1) M12 lock washer (item 7), and (1) M12 hex nut (item 8). Locate the circular hole in the middle of the mounting bracket and position it over the riv cert. Take (1) M10 hex head cap screw (item 11) and (1) M10 flat washer (item 12) and carefully thread it through the circular hole into the riv cert, then tighten the M10 hex head cap screw fully this will seat the riv cert into the rocker panel and the riv cert is then permanently installed *FIG 3*. Remove the M10 hex head cap screw and flat washer and move the front mounting bracket into its normal position. Attach the mounting bracket to the installed riv cert and M12 bolt/ M10 nut plate using (2) M10 hex head cap screws, (2) M10 lock washers (item 13), and (2) M10 flat washers *FIG 4*. Do not fully tighten at this time.
4. Repeat step 2-3 for the rest of the drivers and passenger side brackets.
5. Attach the step bars to the previously installed brackets using (12) M10 button head cap screws (item 14) (stainless steel), (12) M10 toothed lock washers (item 16) (stainless steel), and (12) M10 flat washers (item 15) (stainless steel) *FIG 5*. Do not fully tighten at this time.
6. Align and adjust the step bars as needed then fully tighten all hardware at this time *FIG 6 & 7*. Torque M10 fasteners to 30-35 ft-lbs, stainless steel M10 to 20-25 ft-lbs, and M12 to 45-50 ft-lbs.

CARE INSTRUCTIONS

- REGULAR WAXING IS RECOMMENDED. DO NOT USE ANY TYPE OF POLISH OR WAX THAT MAY CONTAIN ABRASIVES.
- STAINLESS STEEL PRODUCTS CAN BE CLEANED WITH MILD SOAP AND WATER. STAINLESS STEEL POLISH SHOULD BE USED TO POLISH SMALL SCRATCHES.
- GLOSS BLACK FINISHES SHOULD BE CLEANED WITH MILD SOAP AND WATER.



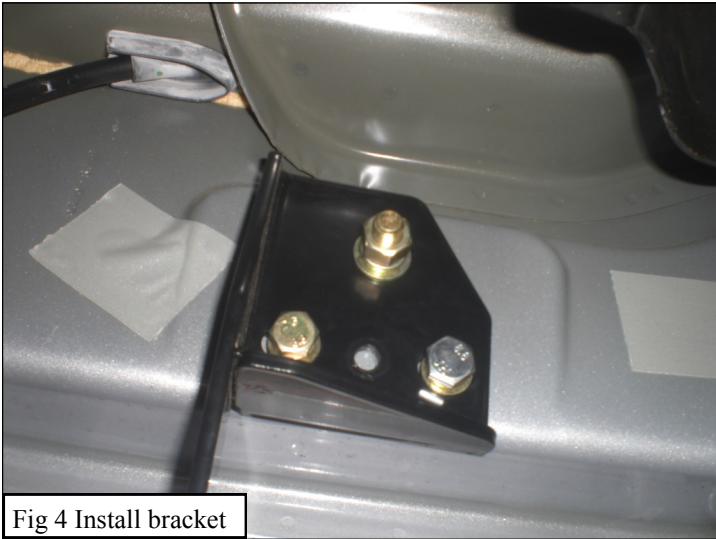


Fig 4 Install bracket



Fig 5 Install step tubes



Fig 6 Pro Traxx 5 installed on Crew Cab



Fig 7 Pro Traxx 4 installed on Quad Cab