



SIGNATURE OF QUALITY

AUTOMOTIVE PRODUCTS, INC.

# INSTALLATION INSTRUCTIONS

APPLICATION: 2005-2014 TOYOTA TACOMA D-CAB  
APP PART # 21-22770, 21-22775, 21-52770, 21-52775  
PRO TRAXX OVAL STEP BARS

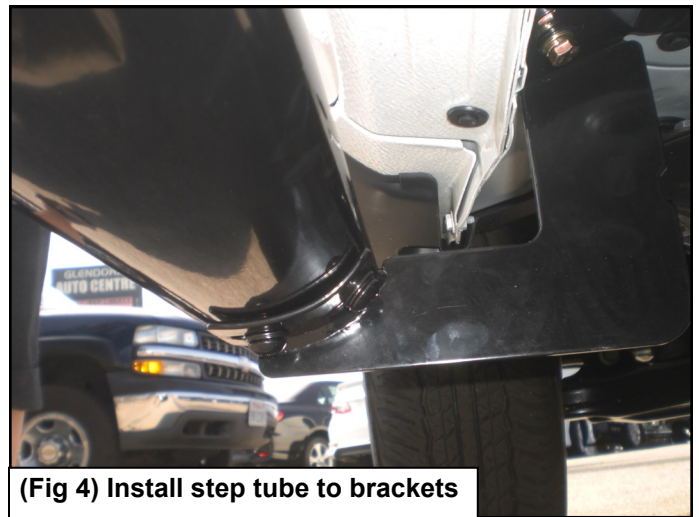
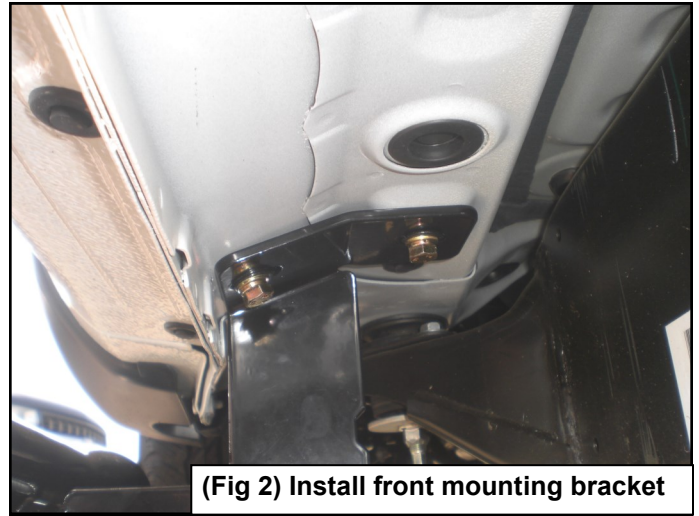
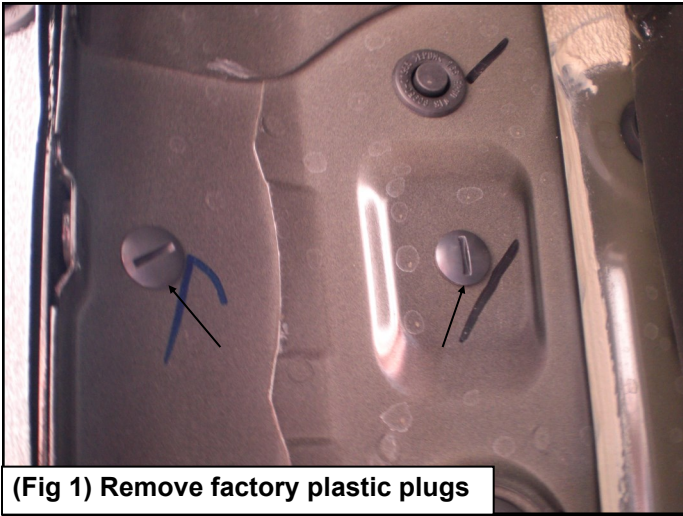
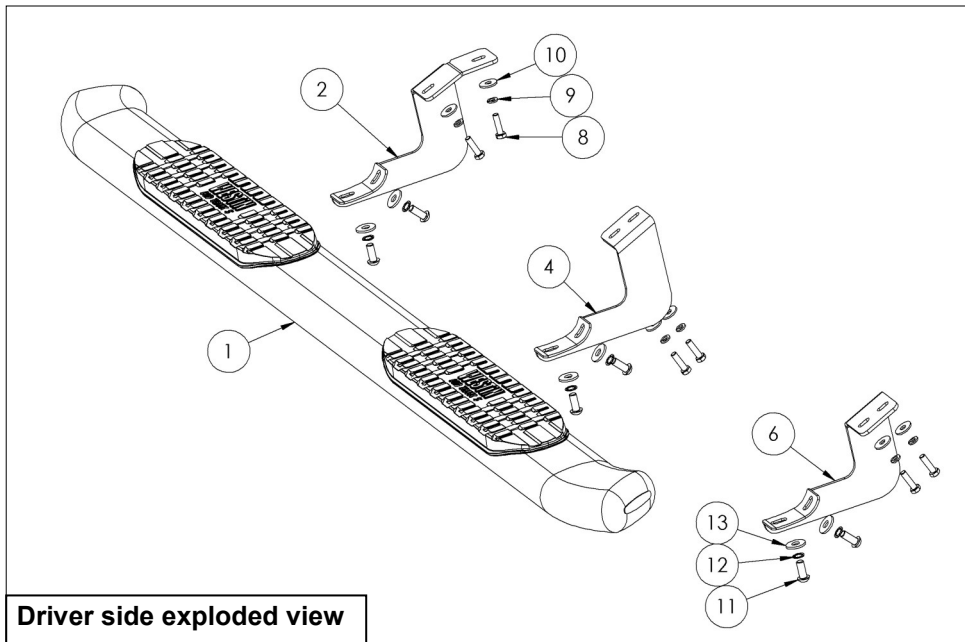
ITEM	QUANTITY	DESCRIPTION	TOOLS NEEDED
1	2	STEP BARS	TORQUE WRENCH
2, 3	2	FRONT MOUNTING BRACKET (2) DRIVER SIDE / (3) PASSENGER SIDE	RATCHET
4, 5	2	CENTER MOUNTING BRACKETS (4) DRIVERS SIDE / (5) PASSENGER SIDE	13MM SOCKET
6, 7	1	REAR MOUNTING BRACKETS (6) DRIVERS SIDE / (7) PASSENGER SIDE	HEX KEY TOOL (INCLUDED)
8	12	M8 X 30MM HEX HEAD CAP SCREWS	FLAT BLADE SCREWDRIVER
9	12	M8 LOCK WASHERS	
10	12	M8 FLAT WASHERS	
11	12	M10 X 25MM HEX BUTTON HEAD CAP SCREWS (STAINLESS)	
12	12	M10 TOOTHED LOCK WASHERS (STAINLESS)	
13	12	M10 FLAT WASHERS (STAINLESS)	

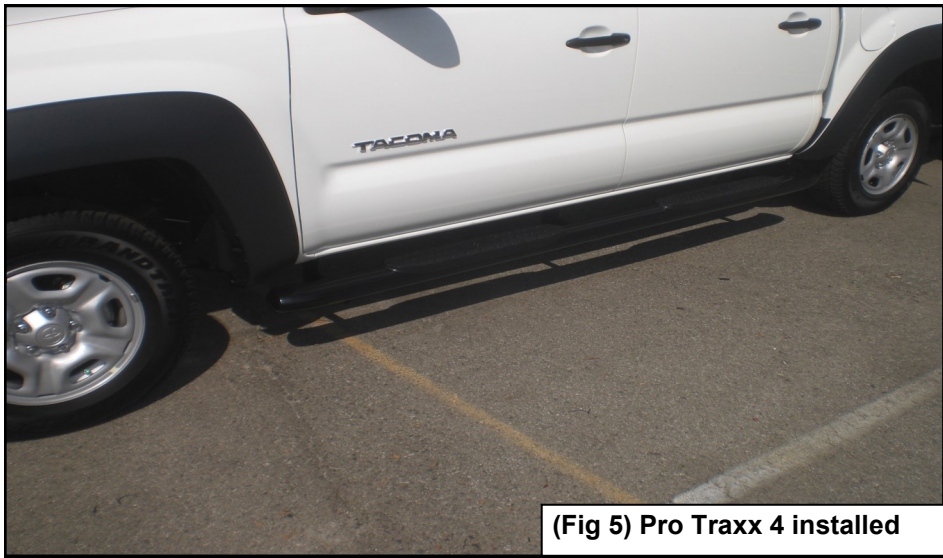
## ANTI-SIZE LUBRICANT ST BE USED ON ALL STAINLESS STEEL FASTENERS TO PREVENT THREAD DAMAGE AND GALLING

1. Remove contents from box, verify if all parts listed are present and free from damage. Carefully read and understand all instructions before attempting installation.
2. Starting at the driver side front rocker panel, locate the front mounting holes and remove the factory plastic plugs (fig 1). Attach the front mounting bracket (item 2) to the factory threaded holes using (2) M8 hex head cap screws (item 8), (2) M8 lock washers (item 9), and (2) M8 flat washers (item 10) (fig 2). Do not fully tighten at this time.
3. Follow the same steps to install the center and rear brackets (fig 3).
4. Take the drivers side step bar (item 1) and place it on the mounting cradles and align the mounting holes. Attach using (6) M10 hex button head cap screws (item 11), (6) M10 toothed lock washers (item 12), and (6) M10 flat washers (item 13) (fig 4).  
*Note: the drivers side step tube will be packaged in a clear poly tube and the passenger side will be packaged in a red poly tube, the Westin logo should face outward when installed.*
5. Align and adjust step bars as needed and tighten all hardware at this time. Torque all M8 fasteners to 15-20 ft-lbs and M10 fasteners to 20-25 ft-lbs (fig 5 & 6).
6. Follow the same steps to install the passenger side mounting brackets and step bar.

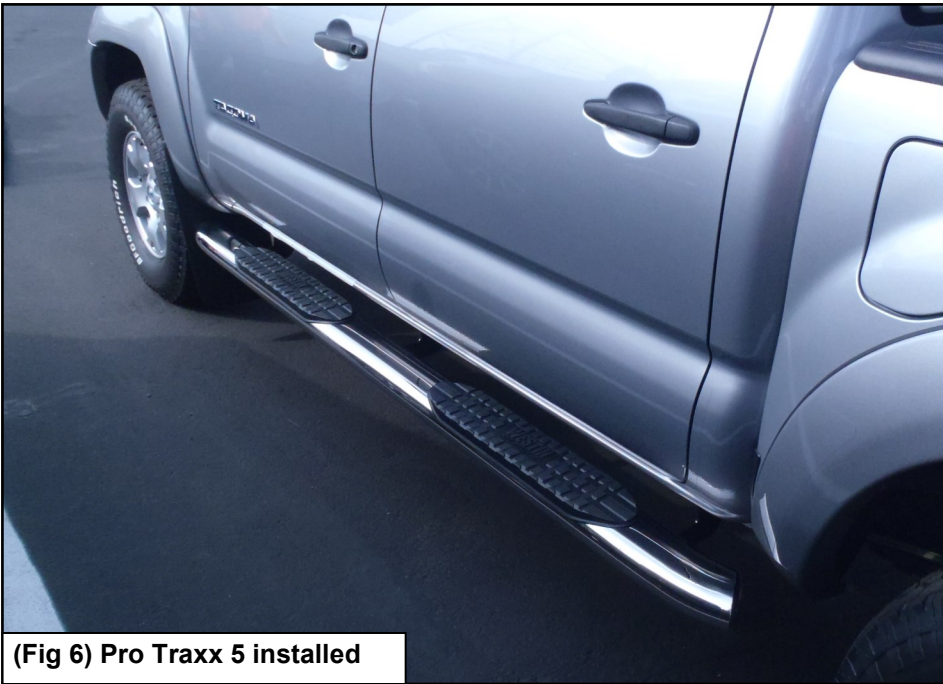
## CARE INSTRUCTIONS

- REGULAR WAXING IS RECOMMENDED. DO NOT USE ANY TYPE OF POLISH OR WAX THAT MAY CONTAIN ABRASIVES.
- STAINLESS STEEL PRODUCTS CAN BE CLEANED WITH MILD SOAP AND WATER. STAINLESS STEEL POLISH SHOULD BE USED TO POLISH SMALL SCRATCHES.
- GLOSS BLACK FINISHES SHOULD BE CLEANED WITH MILD SOAP AND WATER.





(Fig 5) Pro Traxx 4 installed



(Fig 6) Pro Traxx 5 installed