

## INSTALLATION INSTRUCTIONS

APPLICATION: 99-14 FORD F250/350 INCL. 450/550 WITH FENDER FLARES  
SUPER CAB/ SUPER CREW CAB  
APP PART # 21-21310, 21-21315, 21-21330, 21-21335, 21-51310, 21-51315, 21-51330,  
21-51335 PRO  
TRAXX STEP BARS

ITEM	QUANTITY	DESCRIPTION	TOOLS NEEDED
1	2	STEP BARS	17MM SOCKET
2	6	MOUNTING BRACKETS	17MM WRENCH
3	24	M10 HEX HEAD BOLTS	ALLEN KEY (INCLUDED)
4	36	M10 FLAT WASHERS	RATCHET
5	24	M10 LOCK WASHERS	TORQUE WRENCH
6	12	M10 HEX NUTS	
7	12	M10 NUT CLIPS	
8	12	M10 BUTTON HEAD BOLTS (STAINLESS STEEL)	
9	12	M10 TOOTHED LOCK WASHERS (STAINLESS STEEL)	
10	12	M10 FLAT WASHERS (STAINLESS STEEL)	
11	2	FRONT MOUNTING BRACKET SPACER	

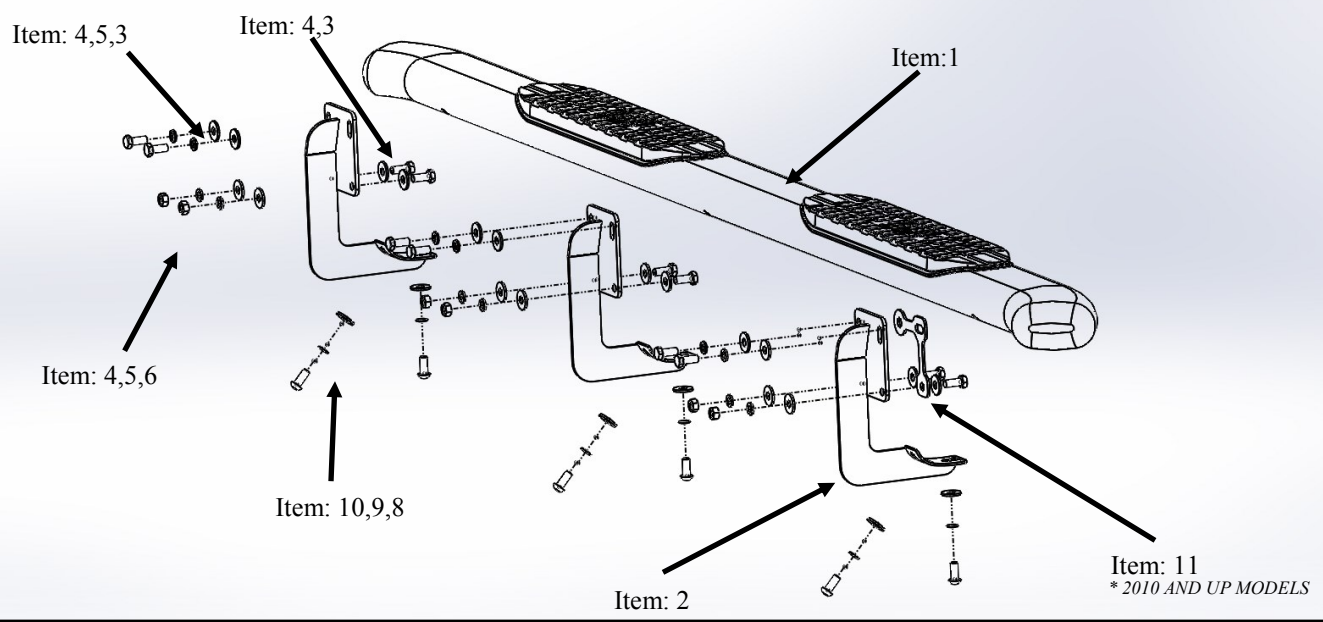
**ANTI-SEIZE LUBRICANT MUST BE USED ON ALL STAINLESS STEEL FASTENERS TO PREVENT THREAD DAMAGE AND GALLING**

1. Remove contents from box, verify if all parts listed are present and free from damage. Carefully read and understand all instructions before attempting installation.
2. Starting at the drivers side, locate the front mounting point on the rocker panel. *NOTE: ON SOME VEHICLES THE MOUNTING HOLES DO NOT LINE UP FROM THE FACTORY IF THIS IS THE CASE DRILL OUT THE HOLES USING A 7/16" DRILL BIT (FIG 1A).* Insert (1) M10 nut clip (Item 7) onto the small circular hole (FIG.1) and attach (1) mounting bracket (item 2) to the nut clip using (1) M10 hex head bolt (item 3), (1) M10 lock washer (Item 5), and (1) M10 flat washer (item 4). Attach the mounting bracket to the existing holes in the pinch weld using (2) M10 hex head bolts (Item 3) , (4) M10 flat washers (Item 4), (2) M10 lock washers (Item 5), and (2) M10 hex nuts (Item 6) (FIG. 2). *Note: for 2010– up model years place (1) front mounting bracket spacer (item 11) in between the rocker panel and the front mounting bracket before attaching (FIG 1B). Do not fully tighten at this time.*
3. Locate the second mounting point on the rocker panel (FIG. 3), insert (2) M10 nut clips (Item7) onto the small circular holes (FIG. 4). Attach the mounting bracket to the nut clips using (2) M10 hex head bolts (Item 3), (2) M10 lock washers (Item 5), and (2) M10 flat washers (Item 4). Attach the mounting bracket to the existing holes in the pinch weld using (2) M10 hex head bolts (Item 3), (4) M10 flat washers (Item 4), (2) M10 lock washers (Item 5), and (2) M10 hex nuts (Item 6) (FIG. 5). *Do not fully tighten at this time.*
4. Repeat this step for the rear mounting bracket. *Do not fully tighten at this time.*
5. Take the drivers side step bar (Item 1) and attach it to the mounting cradles using (6) M10 button head bolts (Item 8), (6) M10 internal tooth lock washers ( Item 9), and (6) M10 flat washers (Item 10) . (FIG. 6) *Do not fully tighten at this time.*
6. Repeat steps 2-5 for passenger side.
7. Align and adjust step bars as needed then fully tighten all hardware at this time. **Torque all M10 fasteners to 30-35 ft lbs**

### CARE INSTRUCTIONS

- REGULAR WAXING IS RECOMMENDED. DO NOT USE ANY TYPE OF POLISH OR WAX THAT MAY CONTAIN ABRASIVES
- STAINLESS STEEL PRODUCTS CAN BE CLEANED WITH MILD SOAP AND WATER. STAINLESS STEEL POLISH SHOULD BE USED TO POLISH SMALL SCRATCHES.
- GLOSS BLACK FINISHES SHOULD BE CLEANED WITH MILD SOAP AND WATER

DRIVERS SIDE EXPLODED VIEW



FRONT MOUNTING LOCATION

INSERT (1) M10 CLIP NUT

DRIVERS SIDE SHOWN

FIG 1



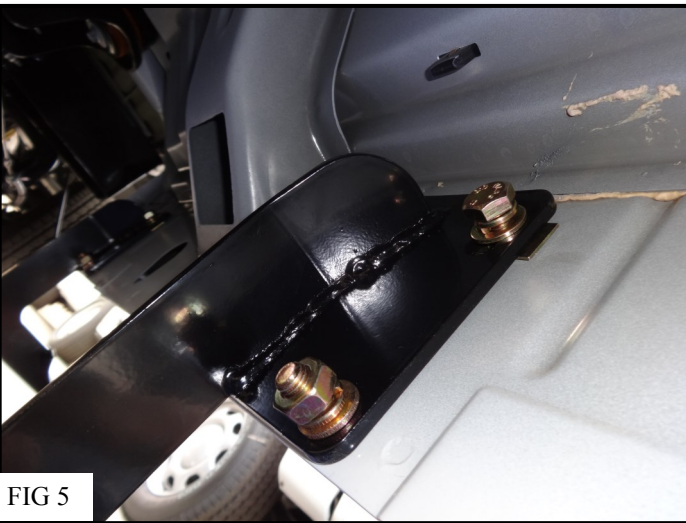
FIG 1A

PASSENGER SIDE SHOWN  
(SPACER SHAPE MAY VARY)

FIG 1B



FIG 2



INSTALLATION COMPLETE

