



INSTALLATION INSTRUCTIONS

PRODUCT DESCRIPTION

APPLICATION:

Low Side Tool Box Universal Fit

AUTOMOTIVE PRODUCTS,

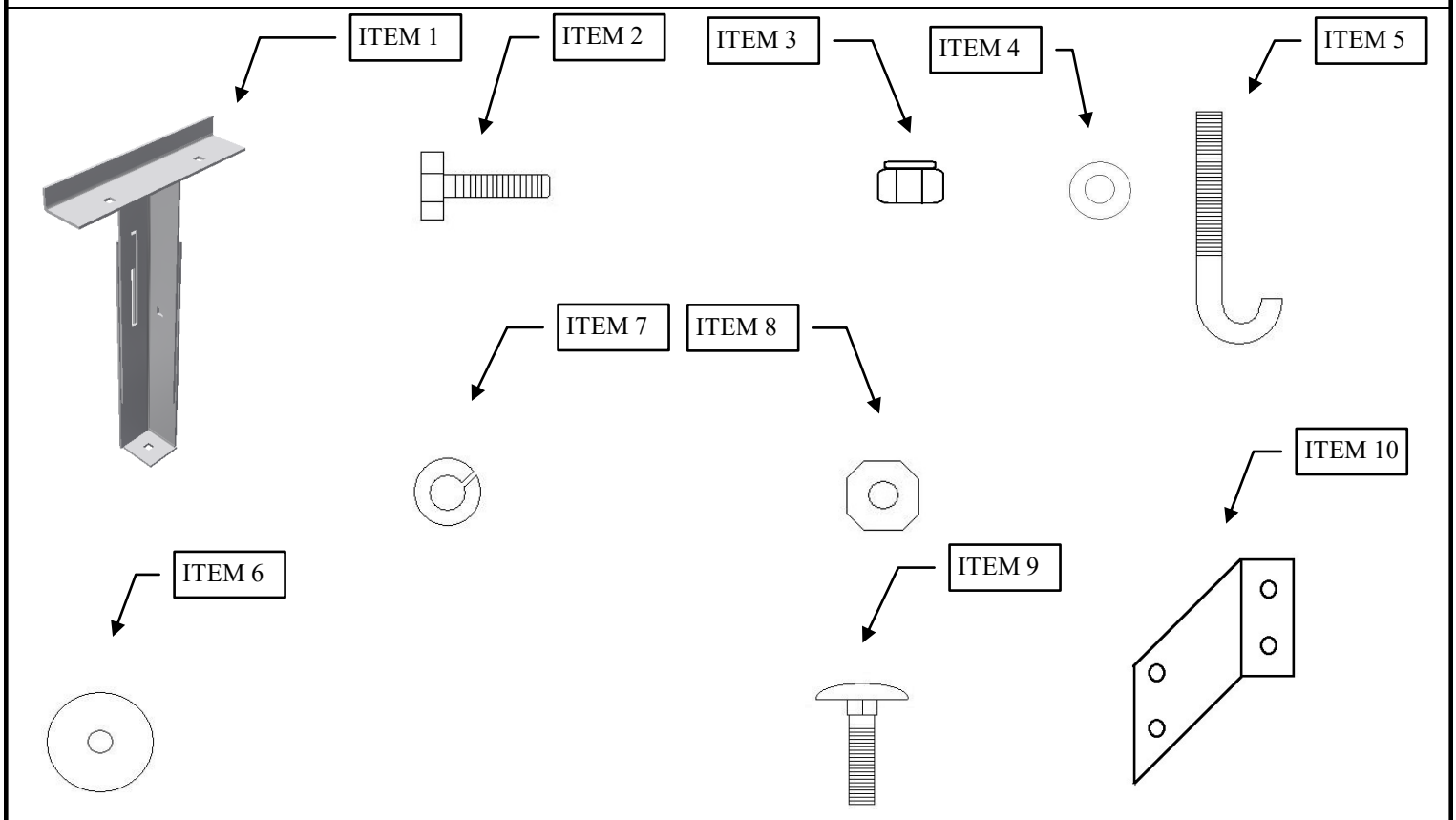
PART NUMBER:



80-RB184, 80-RB174, 80-RB172, 80-RB164, 80-RB180-1, 80-RB178-9

CONTENT			
ITEM	QUANTITY	DESCRIPTION	TOOLS NEEDED
1	2	ADJUSTABLE MOUNTING BRACKET	1/2" SOCKET
2	10	5/16" x 1" SS HEX CAP SCREW	RATCHET
3	10	5/16" SS NYLOCK NUT	1/2" WRENCH
4	20	5/16" SS FLAT WASHER	9/32" Drill Bit
5	2	1/4" J BOLT	
6	2	1/4" FENDER WASHER	
7	6	1/4" LOCK WASHER	
8	6	1/4" HEX NUT	
9	4	1/4" x 1" CARRIAGE BOLT	
10	1	2" x 4" Aluminum Angle	

ANTI-SEIZE LUBRICANT MUST BE USED ON ALL STAINLESS STEEL FASTENERS TO PREVENT THREAD DAMAGE AND GALLING



PROCEDURE

1. Remove contents from box, verify if all parts listed are present and free from damage. Carefully read and understand all instructions before attempting installation.
Failure to identify damage before installation could lead to a rejection of any claim.
2. Step two, **See Fig. A.** Turn tool box upside down, place top mounting bracket in position and mark holes. Using a 9/32" drill bit, drill the marked holes. Bolt top bracket on loosely using 5/16 x 1 hex cap screws, flat washers, nylock nut. Repeat procedure on the other end of the box.
3. Step Three, **See Fig. B.** Add the bottom half of the bracket with the foot side down. Use (2) 5/16 x 1 hex cap screws, flat washers, nylock nut bolted through the slots and adjust to the needed height. Finger tighten at where the desired height is reached.
4. Step four, **See Fig. C.** Carefully place low side toolbox on the bed rail, be sure the mounting legs touch the floor and box is stable before proceeding. Open the box lid and install the J bolt through the pre-punched slots and under the lip of the rail. On some trucks you may need to drill holes in the box to get it in the proper position. **Note: If you plan to attached the low side box to a cross box in the front proceed to the next step before mounting the bracket to the floor.**
5. Step Five, **See Fig. D.** Optional step. If you have a Brute crossover tool box mounted in the front of the bed and would prefer to attach to the low side box, line up low side to the crossover box and use the 2 x 4 aluminum angle to mark holes. Drill with 9/32" bit then use (4) 1/4" carriage bolts, lock washers, and nuts to attach the angle, finger tighten.
6. Step six. Readjust mounting leg to level low side box then mount to the floor of the truck bed (fastener not included for the floor). Before drilling into the floor be sure there is no wires, brake lines, or fuel lines under the bed. Once leg is mounted to the floor drill a 9/32" hole through the remaining hole in the mounting bracket and secure with (1) 5/16" hex cap screw, flat washer, and nylock nut.
7. Step seven. Tighten all fasteners with socket and wrench.

Top Mounting Bracket Shown, Box Upside Down

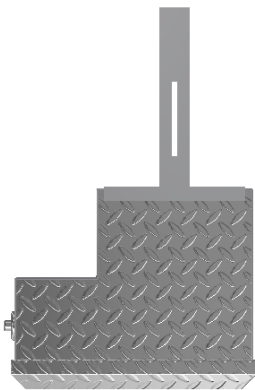


Fig. A

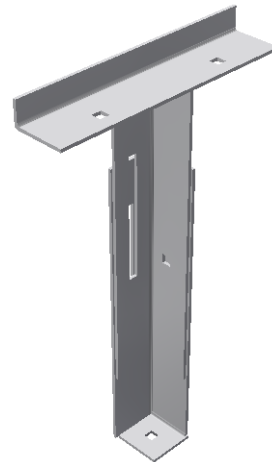
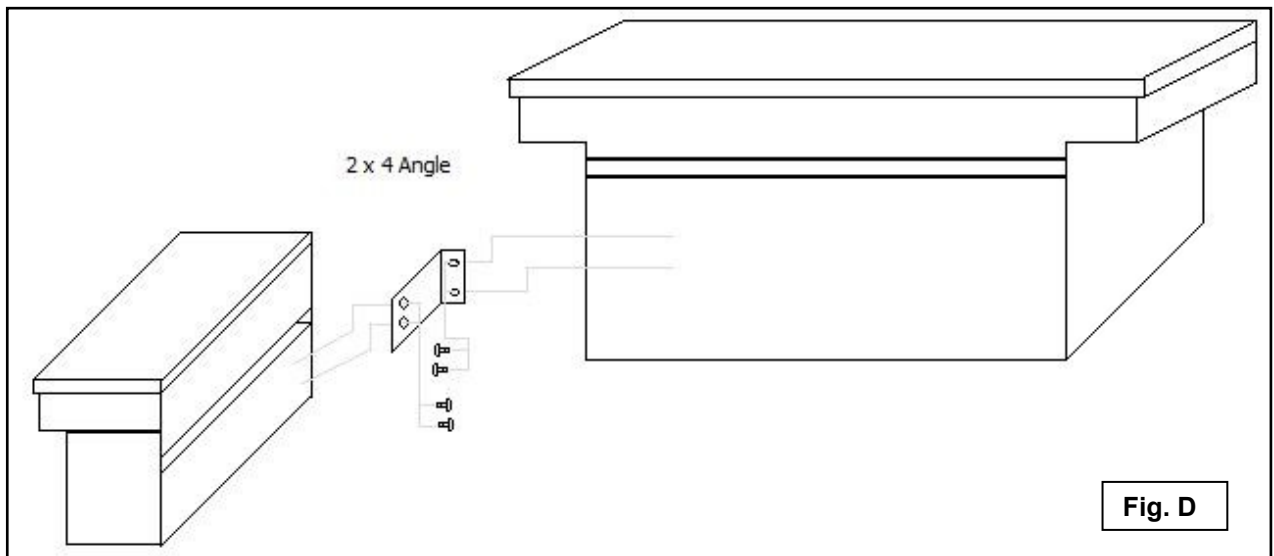
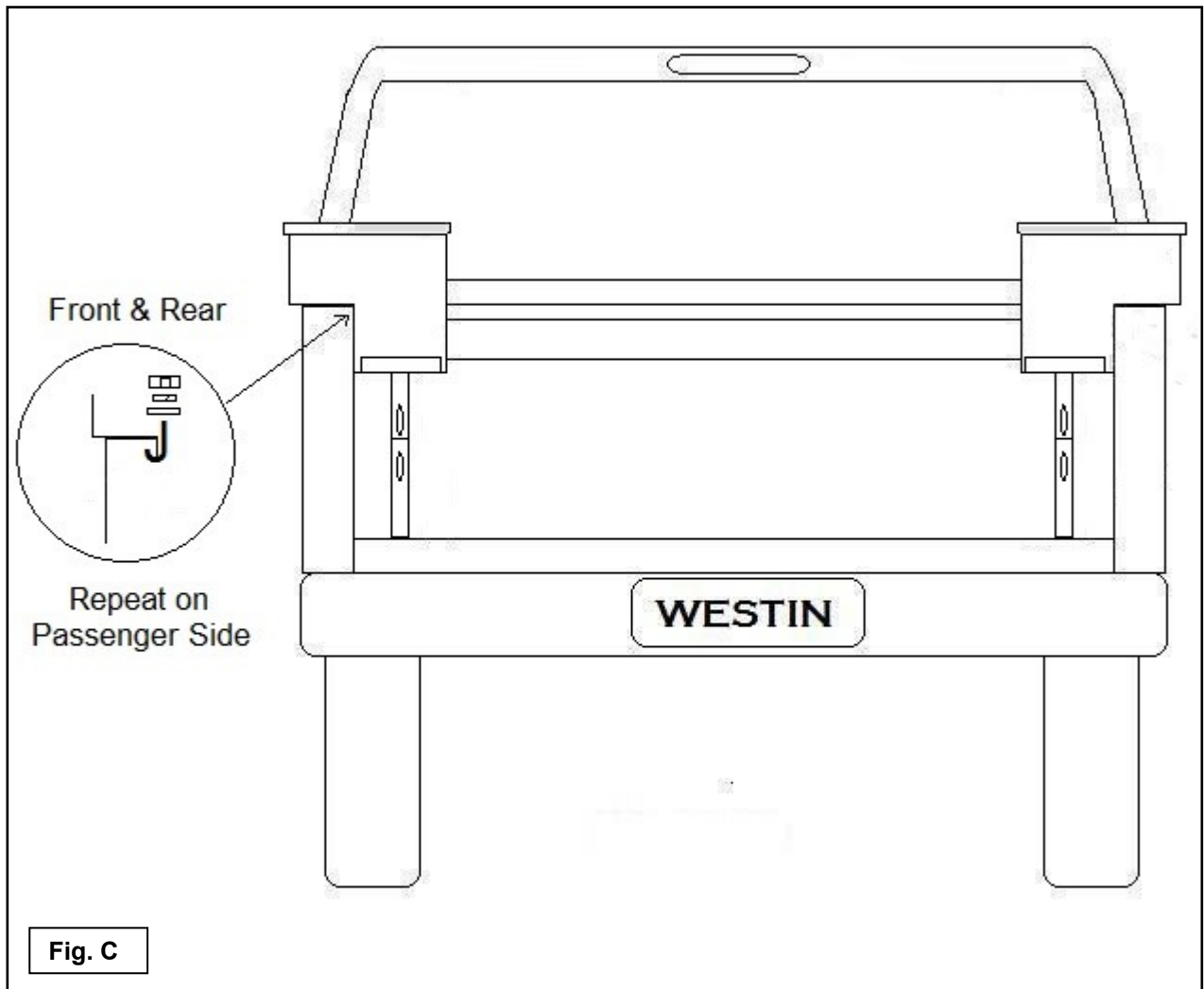


Fig. B



CARE INSTRUCTIONS

- REGULAR WAXING IS RECOMMENDED. DO NOT USE ANY TYPE OF POLISH OR WAX THAT MAY CONTAIN ABRASIVES
- STAINLESS STEEL PRODUCTS CAN BE CLEANED WITH MILD SOAP AND WATER. STAINLESS STEEL POLISH SHOULD BE USED TO POLISH SMALL SCRATCHES.
- GLOSS BLACK FINISHES SHOULD BE CLEANED WITH MILD SOAP AND WATER

Westin

SIGNATURE OF QUALITY

AUTOMOTIVE PRODUCTS, INC.

WARNINGS & NOTICES FOR THE INSTALLATION OF WESTIN TOWING PRODUCTS - CLASS III RECEIVER HITCH

NOTICE

Westin Receiver Hitches are designed to accommodate a 2"- square receiver draw bar rated for class III/IV towing. Closely follow all Westin Installation Instructions for the proper installation of product. Improper installation can result in death, serious injury, and/or product and vehicle damage. In the operation of these products, it is imperative to observe precautions for your personal safety and the safety of others.



WARNING



Failure to follow these instructions could lead to death, personal injury, and / or property damage.

FASTENERS:

All Westin supplied fasteners must be utilized and installed in accordance with the installation instructions and apply torque to the specifications as defined. **DOUBLE CHECK ALL FASTENERS BEFORE INITIAL USE, AND PERIODICALLY IN THE FUTURE TO ENSURE PROPER FUNCTION AND SAFETY.**

DRILLING:

Most Westin products do not require drilling for installation. If drilling is defined as required, use caution when drilling a vehicle. **FAILURE TO REVIEW AN AREA TO BE DRILLED MAY RESULT IN PERSONAL INJURY AND/OR INJURY TO OTHERS AS WELL AS VEHICLE DAMAGE.**

EYE PROTECTION:

ALWAYS WEAR SAFETY GLASSES OR GOGGLES DURING THE INSTALLATION PROCESS TO AVOID PERSONAL INJURY.

MAXIMUM TOWING/CARRYING CAPACITY:

The Westin Receiver Hitches will have a visible tow rating label affixed directly on the product. User should never exceed the vehicle manufacturers maximum tow and weight rating regardless of the capacity of the hitch. **FAILURE TO FOLLOW THESE GUIDELINES WILL VOID THE WESTIN WARRANTY AND MAY RESULT IN PERSONAL INJURY AND/OR INJURY TO OTHERS AS WELL AS VEHICLE DAMAGE.**

Westin.
SIGNATURE OF QUALITY

Learn more about truck bed accessories we have.