



Window Visors

Installation Instructions

PLEASE READ THESE INSTRUCTIONS BEFORE INSTALLATION

Tape adheres best at temperatures over 65°F (18° C)

1) Trial Fit without removing the masking from the double-sided tape. Take note of the contact area.

2) With alcohol pad clean contact area. After cleaning, wipe dry with a clean, dry cloth.

3) Partially remove masking (fold upwards)

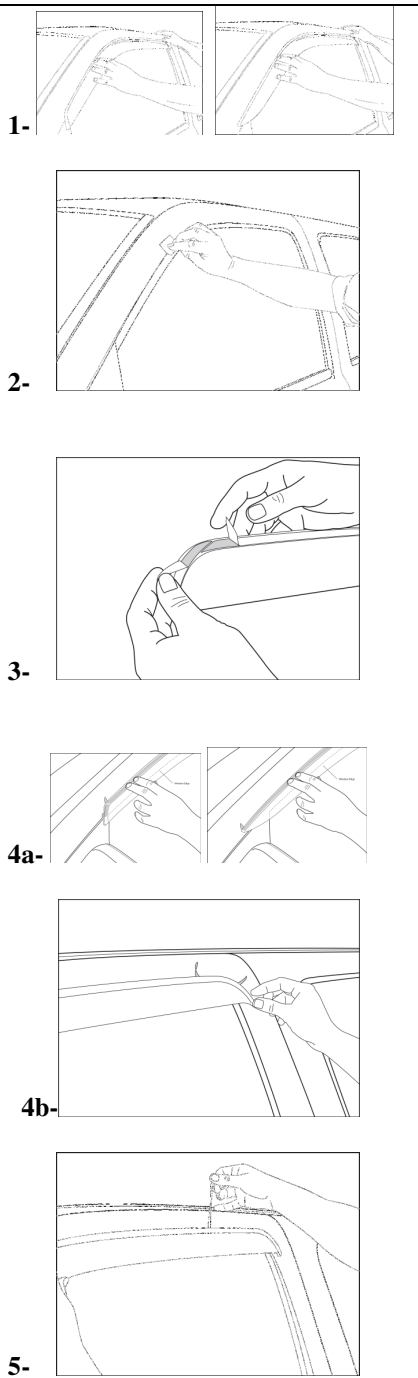
4) Carefully put visor in place

5) By pulling upward remove the rest of the masking.

6) Rub over taped edge firmly with a soft cloth to fully adhere tape.

***For a four piece set, repeat the above steps.**

REQUIRES 48 hours to cure. Do not wash vehicle for 48 hours after installation.



Cleaning Instructions: Wash with warm water and a mild soap solution using a soft, clean cloth or sponge. Use of cleaners not approved for acrylic, or use of improper solvents could result in permanent damage.