

INSTALLATION INSTRUCTIONS

LED COWL MOUNT



APPLICATION:

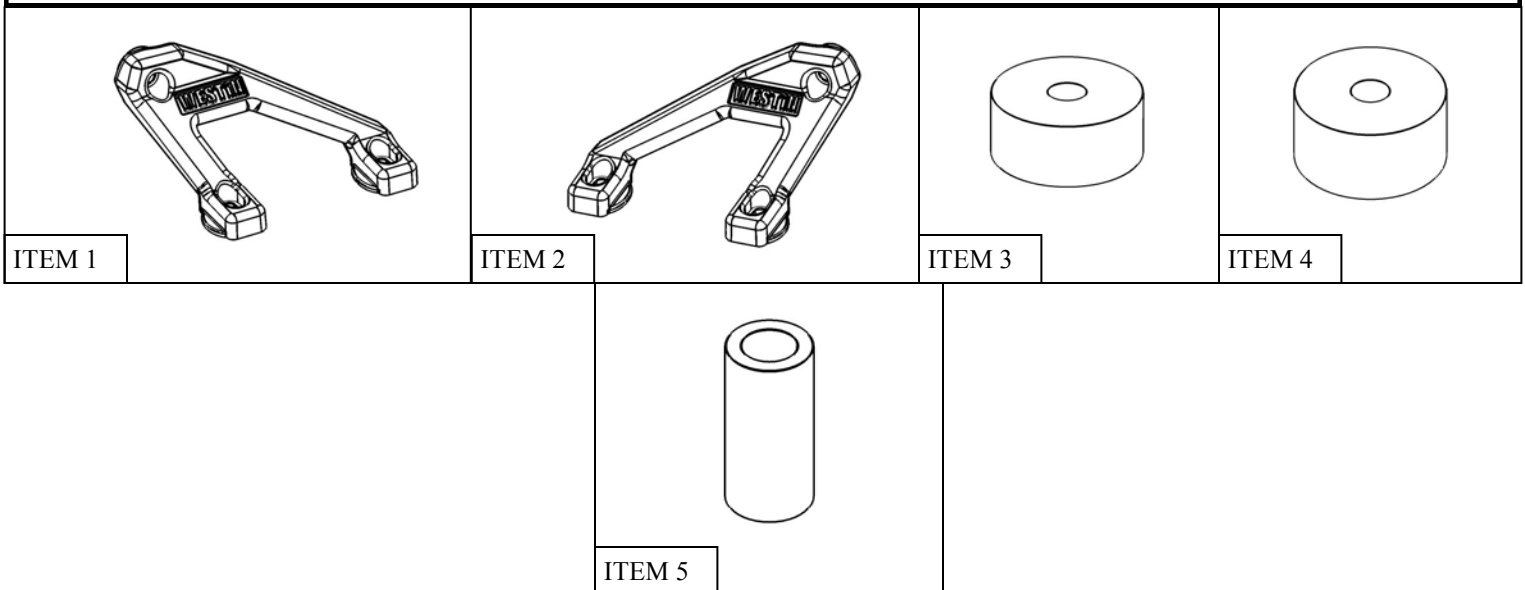
2018-2019 Jeep Wrangler JL 2 Dr /Wrangler JL Unlimited 4 Dr
(Excl. 2018 JK)

PART NUMBER:

62-41075; *Note: Only Single Row LED Bars to be used with this product*

CONTENT			
ITEM	QUANTITY	DESCRIPTION	TOOLS NEEDED
1	1	DRIVER MOUNTING BRACKET	ALLEN WRENCH
2	1	PASSENGER MOUNTING BRACKET	TORX BIT
3	2	SHORT 25 MM O.D. SPACER	TORQUE WRENCH
4	2	TALL 25 MM O.D. SPACER	
5	4	10 MM O.D. SPACER	
6	8	FOAM TAPE SQUARE	
7	2	M8 SOCKET HEAD SCREW	
8	2	M8 SPLIT LOCK WASHER	
9	2	SHORT M6 BUTTON HEAD SCREW	
10	2	LONG M6 BUTTON HEAD SCREW	
11	2	M6 SPLIT LOCK WASHER	
12	2	M6 TOOTH LOCK WASHER	
13	4	M6 FLAT WASHER	

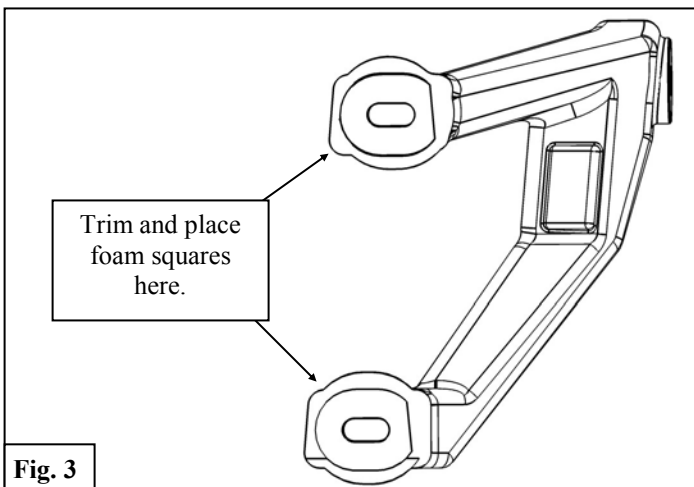
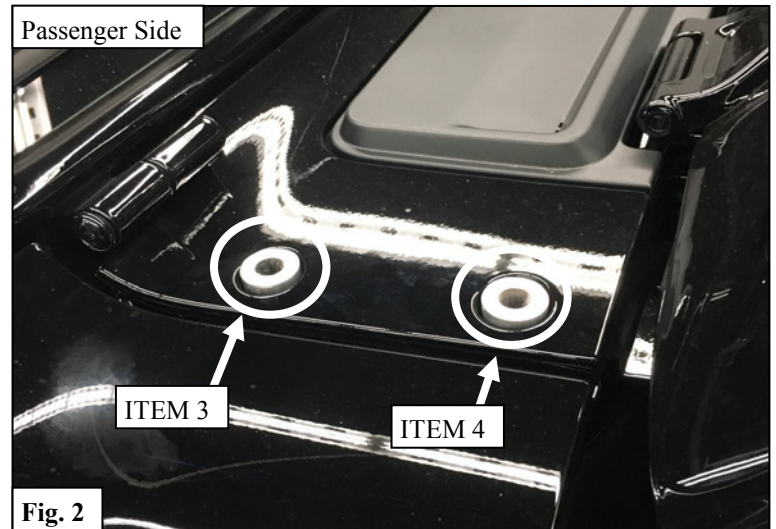
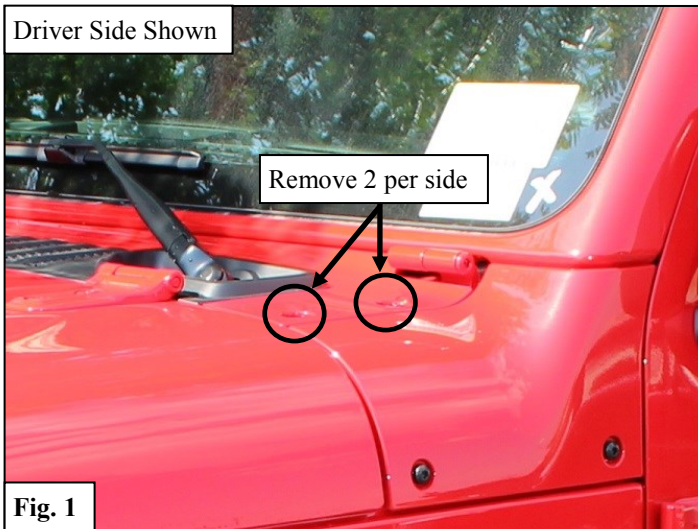
ANTI-SEIZE LUBRICANT MUST BE USED ON ALL STAINLESS STEEL FASTENERS TO PREVENT THREAD DAMAGE AND GALLING



PROCEDURE

1. Remove contents from box, verify if all parts listed are present and free from damage.
Carefully read and understand all instructions before attempting installation.
Failure to identify damage before installation could lead to a rejection of any claim.

2. Remove the four cowl bolts as shown in **Figure 1**.
3. Insert the 10mm O.D. Spacer (5) into each of the four holes that the cowl bolts were removed from in **Step 1**.
4. Trim 4 foam Tape Squares (6) and place over the 10mm O.D. Spacers (5). *Note: be sure to clean area so that the tape can adhere.*
5. Place the 25mm O.D. Spacers (3 & 4) over the 10mm O.D. Spacers: Short Spacer (3) will be placed in the rear-most location on each side, Long Spacer (4) will be placed in the front-most location on each side. See **Figure 2**.



6. Place foam squares on the underside of each cowl mount foot and trim as necessary. See **Figure 3**.

7. Place the Mounting Bracket (1-2) in place and loosely install the supplied M6 Hardware. See **Figure 4**.

Passenger Side Shown

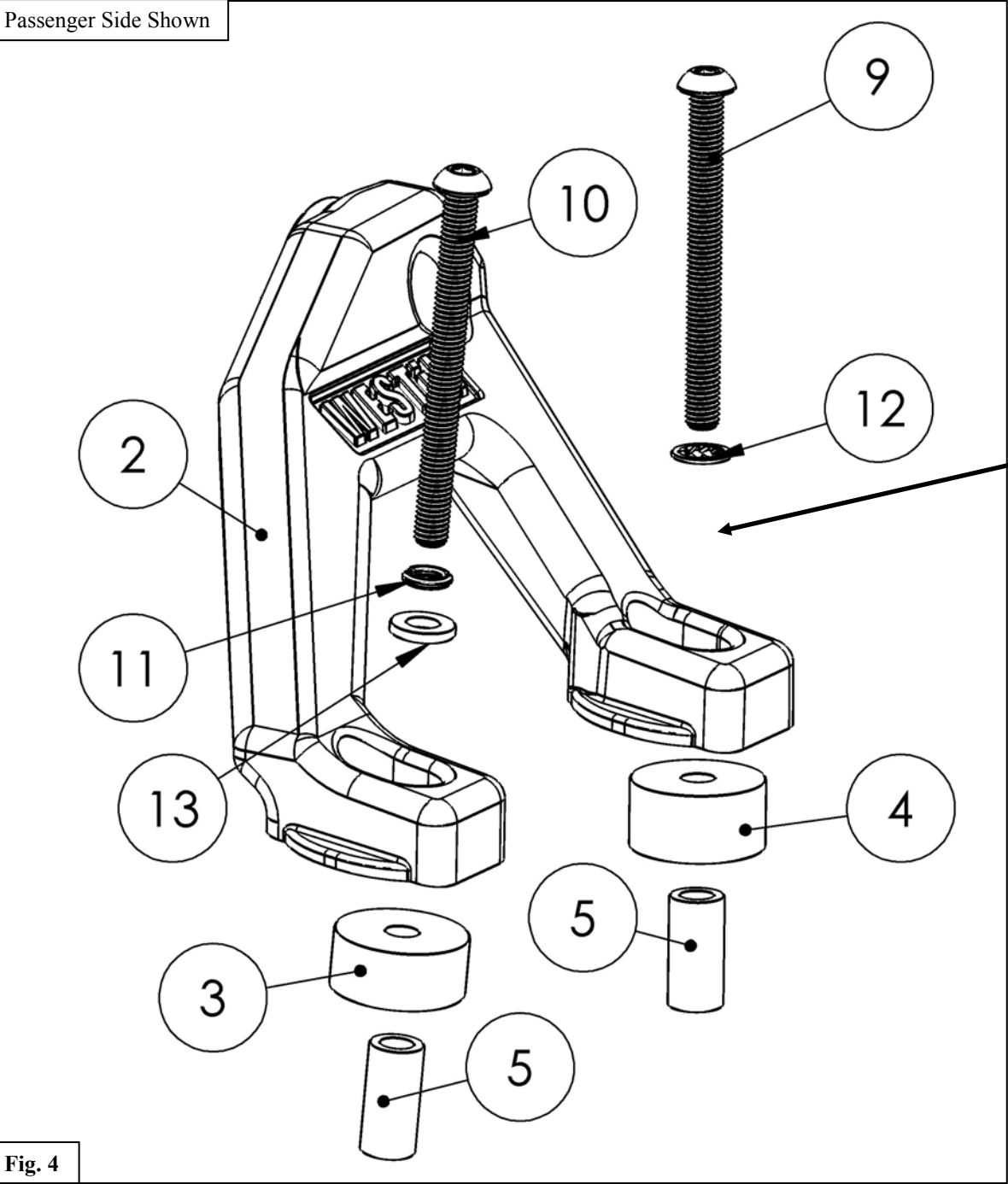
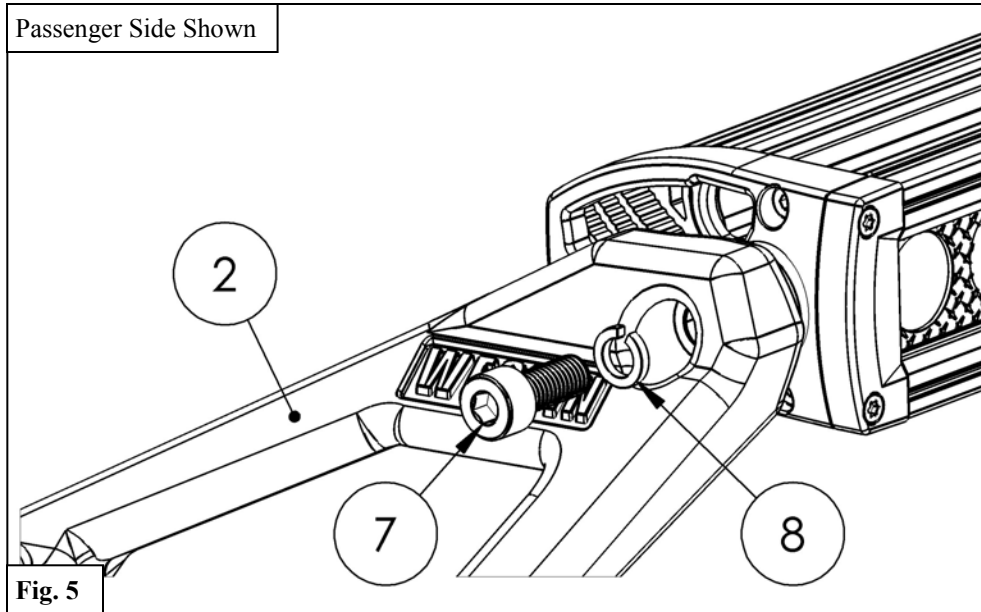


Fig. 4

8. Install the light bar (sold separately) using the supplied M8 Hardware. See **Figure 5**.



9. Tighten all hardware: M6 to 8.5 ft-lb, M8 to 20 ft-lb.



CARE INSTRUCTIONS

- REGULAR WAXING IS RECOMMENDED. DO NOT USE ANY TYPE OF POLISH OR WAX THAT MAY CONTAIN ABRASIVES.
- STAINLESS STEEL PRODUCTS CAN BE CLEANED WITH MILD SOAP AND WATER. STAINLESS STEEL POLISH SHOULD BE USED TO POLISH SMALL SCRATCHES.
- GLOSS BLACK FINISHES SHOULD BE CLEANED WITH MILD SOAP AND WATER.

WESTIN



WARNING



Failure to follow these instructions could lead to death, personal injury, and / or property damage.

Failure to follow these instructions could lead to death, personal injury, and / or property damage.

FASTENERS:

All Westin supplied fasteners must be utilized and installed in accordance with the installation instructions and apply torque to the specifications as defined. **DOUBLE CHECK ALL FASTENERS BEFORE INITIAL USE, AND PERIODICALLY IN THE FUTURE TO ENSURE PROPER FUNCTION AND SAFETY.**

DRILLING:

Most Westin products do not require drilling for installation. If drilling is defined as required, use caution when drilling a vehicle. **FAILURE TO REVIEW AN AREA TO BE DRILLED MAY RESULT IN PERSONAL INJURY AND/OR INJURY TO OTHERS AS WELL AS VEHICLE DAMAGE.**

EYE PROTECTION:

ALWAYS WEAR SAFETY GLASSES OR GOGGLES DURING THE INSTALLATION PROCESS TO AVOID PERSONAL INJURY.

MAXIMUM TOWING/CARRYING CAPACITY: (if applicable)

The Westin Receiver Hitches will have a visible tow rating label affixed directly on the product. User should never exceed the vehicle manufacturers maximum tow and weight rating regardless of the capacity of the hitch. **FAILURE TO FOLLOW THESE GUIDELINES WILL VOID THE WESTIN WARRANTY AND MAY RESULT IN PERSONAL INJURY AND/OR INJURY TO OTHERS AS WELL AS VEHICLE DAMAGE.**

