

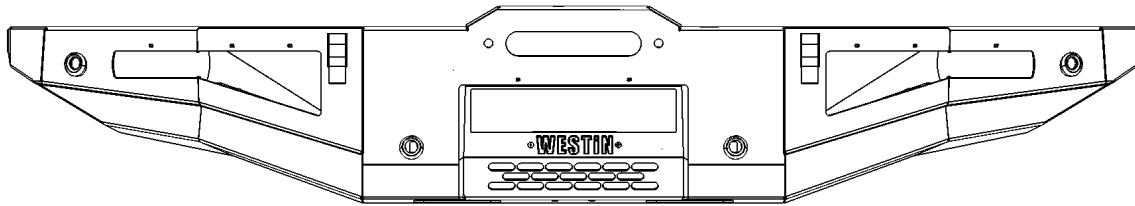
INSTALLATION INSTRUCTIONS

XTS FRONT BUMPER

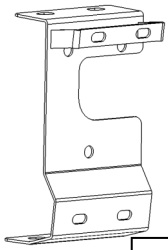


APPLICATION:
Ford Bronco 2021-2022 W/Sensors
PART NUMBER:
59-711255

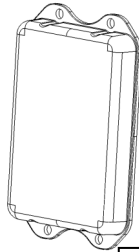
CONTENT			
ITEM	QUANTITY	DESCRIPTION	TOOLS NEEDED
1	1	XTS BUMPER ASSEMBLY	ALLEN WRENCH
2	1	ADAPTIVE CRUISE CONTROL RELOCATION BRACKET	10MM WRENCH
3	1	ADAPTIVE CRUISE CONTROL SHIELD	10MM SOCKET
4	2	LED LIGHT MOUNTING BRACKET (1 DRIVER, 1 PASSENGER)	13MM WRENCH
5	4	PARKING SENSOR GASKET	13MM SOCKET
6	4	PARKING SENSOR TAB	19MM WRENCH
7	2	M12 BOLT PLATE	19MM SOCKET
8	4	M12 RETAINER	TORQUE WRENCH
9	4	M12 HEX NUT	RATCHET
10	4	M12 SPLIT LOCK WASHER	
11	4	M12 FLAT WASHER	
12	8	M8 BUTTON HEAD BOLT	
13	8	M8 FLAT WASHER	
14	8	M8 SERRATED FLANGE HEX NUT	
15	4	SHORT M6 BUTTON HEAD BOLT (<i>BLACK ZINC HARDWARE</i>)	
16	3	LONG M6 BUTTON HEAD BOLT (<i>BLACK ZINC HARDWARE</i>)	
17	10	M6 FLAT WASHER (<i>BLACK ZINC HARDWARE</i>)	
18	7	M6 NYLOCK HEX NUT (<i>BLACK ZINC HARDWARE</i>)	
19	4	M6 HEX HEAD BOLT	
20	4	M6 SPLIT LOCK WASHER	
21	8	M6 FLAT WASHER	
22	4	M6 HEX NUT	
23	4	PARKING SENSOR PLUGS	
24	2	WIRING HARNESS EXTENSION	
ANTI-SEIZE LUBRICANT MUST BE USED ON ALL STAINLESS STEEL FASTENERS TO PREVENT THREAD DAMAGE AND GALLING			



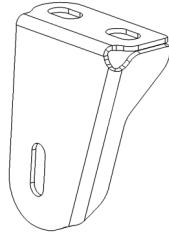
ITEM 1



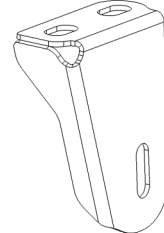
ITEM 2



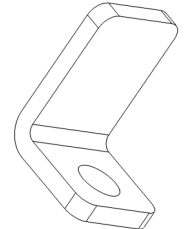
ITEM 3 (Driver Side)



ITEM 4 (Passenger Side)



ITEM 4



ITEM 6

PROCEDURE

1. Remove contents from box, verify if all parts listed are present and free from damage. Carefully read and understand all instructions before attempting installation. **Failure to identify damage before installation could lead to a rejection of any claim.**
2. Unplug the OEM front bumper harness located on the driver side along with any other wiring to the bumper (sensors, fog lights, etc).
3. Remove the OEM front tow hook covers by removing the push pins and firmly pulling on the plastic covers. See **Figure 1 & 2.**

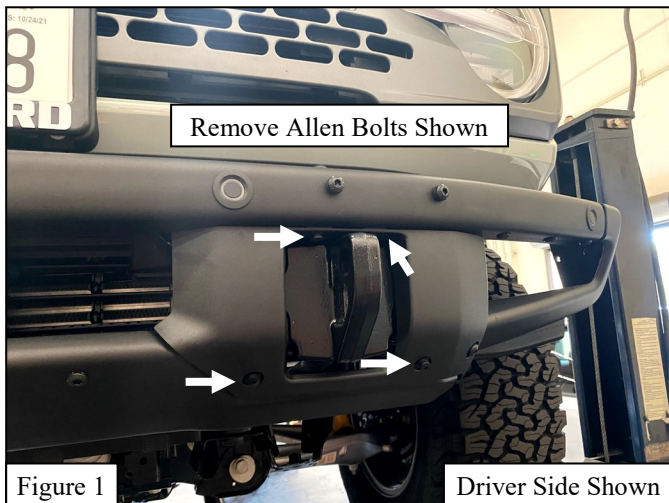


Figure 1

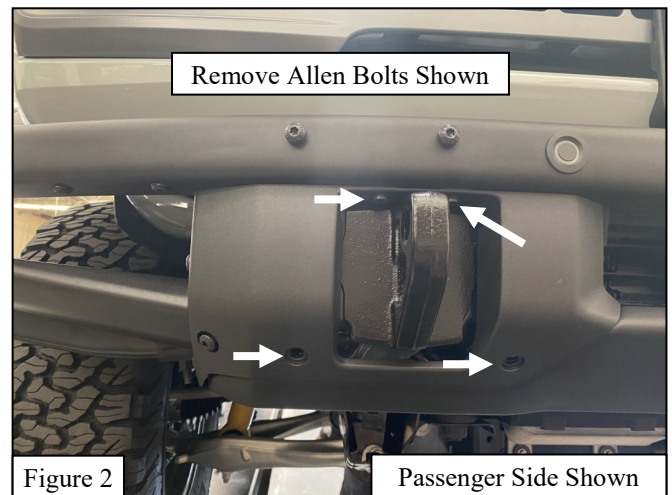


Figure 2

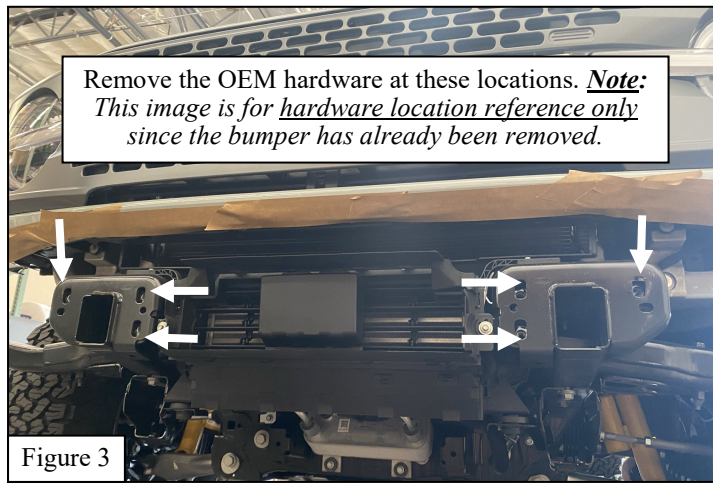


Figure 3

5. Remove and unplug the OEM Active Cruise Control accessory since it will be relocated using supplied bracket and hardware. See **Figure 4** for reference.
6. Relocate the OEM Active Cruise Control accessory to the Active Cruise Control Relocator bracket (Item 2) using the provided M6 hardware (Items 16-18). See **Figure 5** for reference.
7. Using the supplied M6 hardware (Items 15, 17-18) to mount the Adaptive Cruise Control Shield (Item 3) to the XTS Front Bumper as shown in **Figure 6**.
8. With the OEM Active Cruise Control accessory mounted to the Relocator bracket (Item 2), mount the accessory assembly to the XTS Front Bumper as shown in **Figure 7** using the supplied M8 hardware (Items 12-14).

Note: In order to connect sensor to harness, harness push pins need to be pulled to allow cable to reach further.

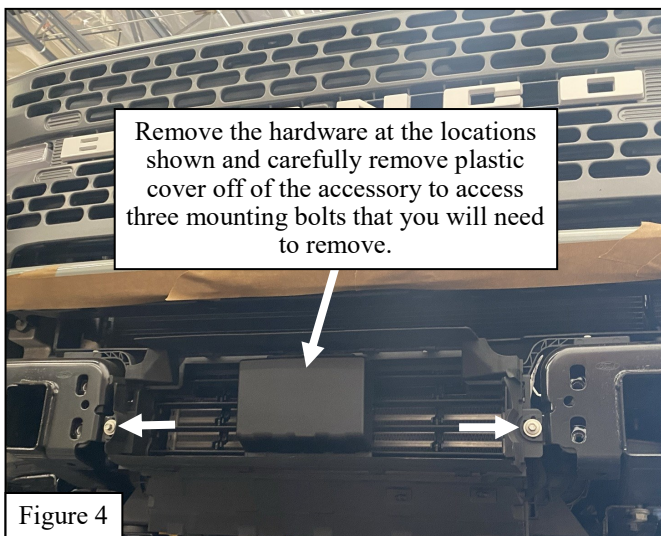


Figure 4

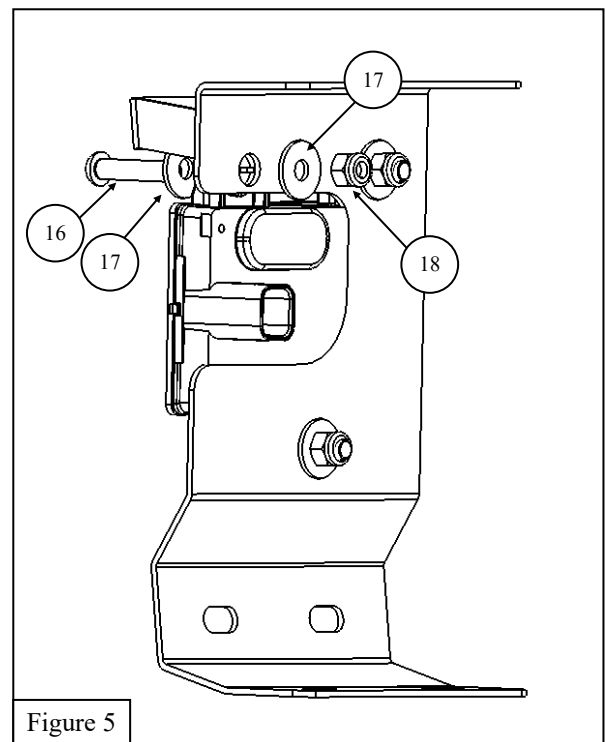
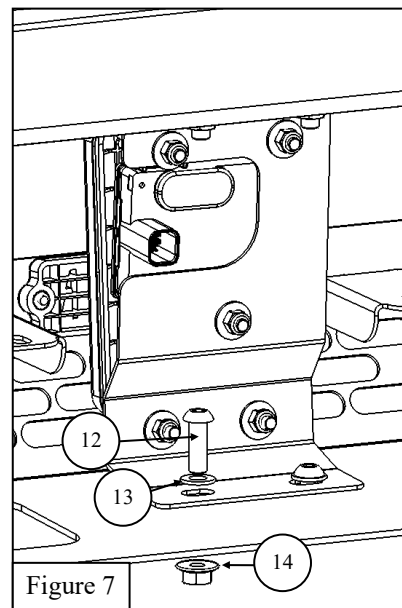
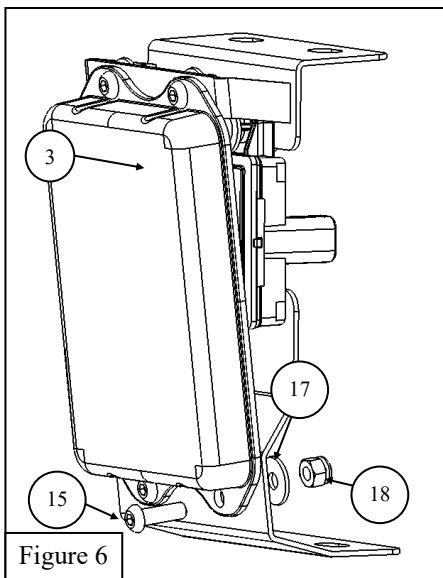


Figure 5

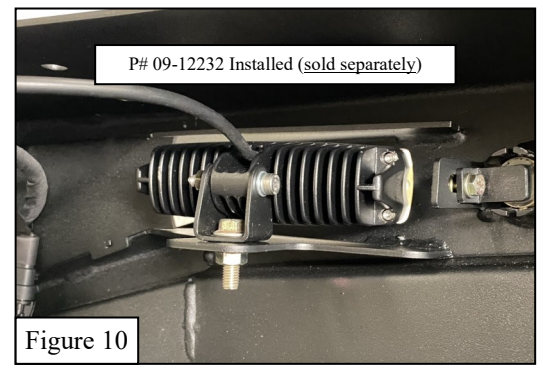
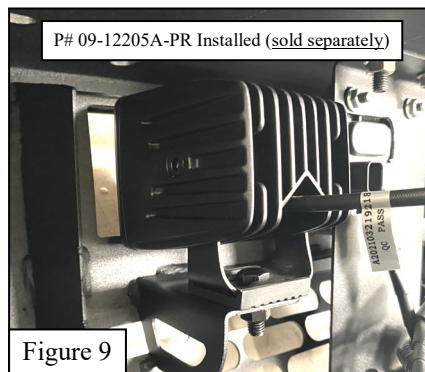
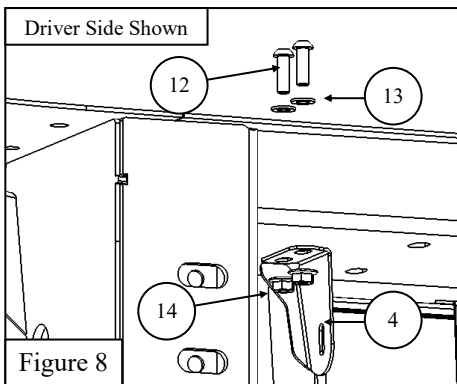


9. Use the supplied M8 Hardware (Items 12-14) to attach the LED Brackets (Item 4) to the center section. See **Figure 8**.

NOTES ON LED LIGHTING

- *If installing any LED lighting options to the bumper, do so at this time per manufacturers instructions.*
 - *An LED Light Bar will interfere with the Adaptive Cruise Control accessory.*
- *Hyper Q LED lights (sold separately) may be installed to the center, square sections of the bumper. See **Figure 9** for reference.*
 - *LED light bars (sold separately) may be installed to the outer sections of the bumper. See **Figure 10** for reference.*

10. If the vehicle **is equipped** with parking sensors, begin to disassemble the OEM bumper completely by **removing all** of the hardware and bumper panels in order to gain access to the sensors and sensor harness.



PARKING SENSOR INSTALLATION

11. **If you are not installing the parking sensors**, install the Parking Sensor Plugs (Item 23) and proceed to **Step 15**.
12. Carefully disassemble the OEM front bumper in order to remove the wiring harness and the parking sensors. Pay attention to the orientation of the sensors. They must be installed in the same orientation. Handle sensors with care, they are very delicate.
13. Use the Parking Sensor Tab (Item 6) along with the supplied M6 hardware (Items 19-22) to install the sensors as shown in **Figures 11 & 12**.
Make sure to install using OEM rubber grommet and center the sensor in the holes. See Figure 13 for reference.
14. Carefully route the harness around the XTS front bumper. **Note:** *Zip ties or double sided tape can be used to route harness and to hold the sensor in position.*

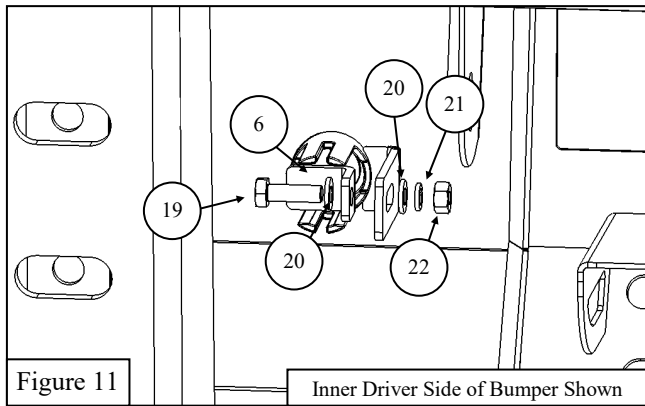


Figure 11

Inner Driver Side of Bumper Shown

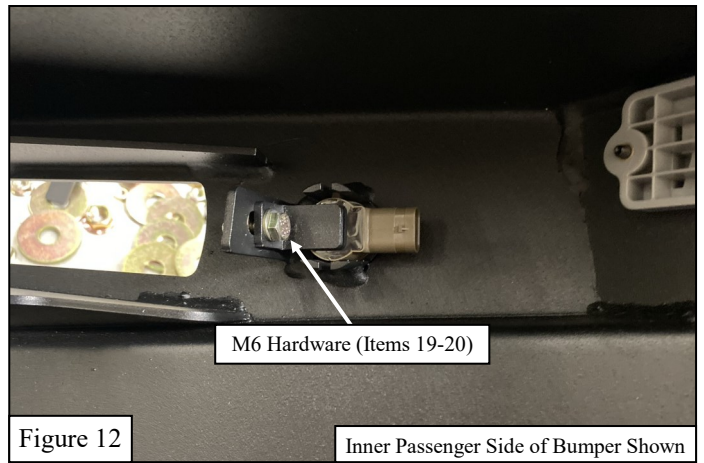


Figure 12

Inner Passenger Side of Bumper Shown

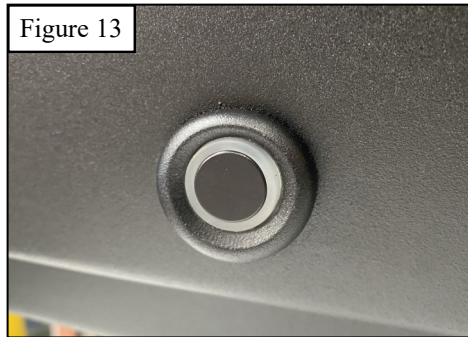


Figure 13

15. Locate and remove the OEM frame extensions. See **Figures 14 & 15** for reference.
16. Loosely attach the bumper assembly to the vehicle frame using the M12 hardware (Items 7-11). See **Figure 16**. **Note:** As a suggestion, install the bolt plate (Item 7) on the inner side of the bumper and use the supplied M12 Retainers (Item 8) to secure the bolt plates on the bumper assembly prior to lifting the bumper assembly onto the vehicle. This will make the assembly easier.
17. Plug in the OEM front bumper harness located on the driver side along with any other wiring to the bumper (ACC module, sensors, fog lights, etc). **Note:** Carefully route the harnesses as needed to avoid any pinching of the harnesses.
18. Align and adjust the bumper as desired and torque all hardware as specified: M6 to 7 ft-lbs, M8 to 18 ft-lbs, M12 to 60 ft-lbs.

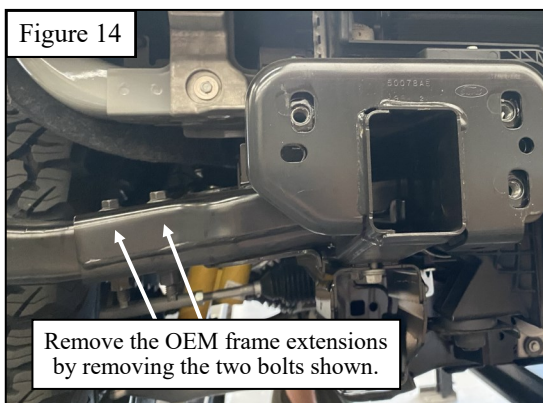


Figure 14

Remove the OEM frame extensions by removing the two bolts shown.

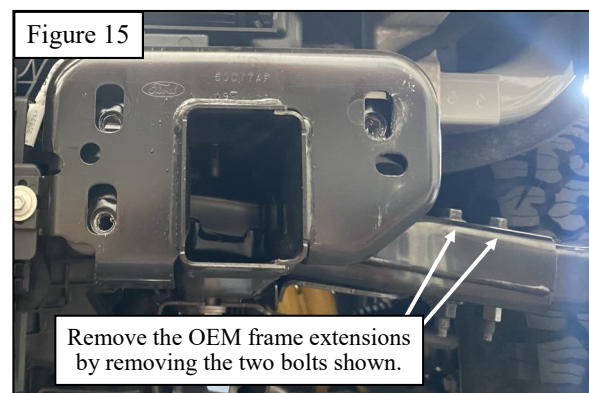
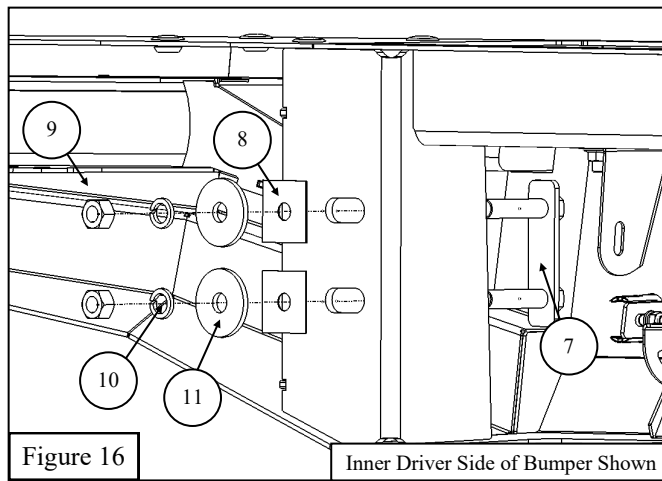


Figure 15

Remove the OEM frame extensions by removing the two bolts shown.



INSTALLATION COMPLETE



CARE INSTRUCTIONS

- REGULAR WAXING IS RECOMMENDED. DO NOT USE ANY TYPE OF POLISH OR WAX THAT MAY CONTAIN ABRASIVES.
- STAINLESS STEEL PRODUCTS CAN BE CLEANED WITH MILD SOAP AND WATER. STAINLESS STEEL POLISH SHOULD BE USED TO POLISH SMALL SCRATCHES.
- GLOSS BLACK FINISHES SHOULD BE CLEANED WITH MILD SOAP AND WATER.

WESTIN Westin Automotive Products, Inc.
320 W. Covina Blvd
San Dimas, Ca. 91773

Thank you for choosing Westin products
for additional installation assistance please call
Customer Service (800) 793-7846
www.westinautomotive.com



WARNING



Failure to follow these instructions could lead to death, personal injury, and / or property damage.

Failure to follow these instructions could lead to death, personal injury, and / or property damage.

FASTENERS:

All Westin supplied fasteners must be utilized and installed in accordance with the installation instructions and apply torque to the specifications as defined. **DOUBLE CHECK ALL FASTENERS BEFORE INITIAL USE, AND PERIODICALLY IN THE FUTURE TO ENSURE PROPER FUNCTION AND SAFETY.**

DRILLING:

Most Westin products do not require drilling for installation. If drilling is defined as required, use caution when drilling a vehicle. **FAILURE TO REVIEW AN AREA TO BE DRILLED MAY RESULT IN PERSONAL INJURY AND/OR INJURY TO OTHERS AS WELL AS VEHICLE DAMAGE.**

EYE PROTECTION:

ALWAYS WEAR SAFETY GLASSES OR GOGGLES DURING THE INSTALLATION PROCESS TO AVOID PERSONAL INJURY.

MAXIMUM TOWING/CARRYING CAPACITY: (if applicable)

The Westin Receiver Hitches will have a visible tow rating label affixed directly on the product. User should never exceed the vehicle manufacturers maximum tow and weight rating regardless of the capacity of the hitch. **FAILURE TO FOLLOW THESE GUIDELINES WILL VOID THE WESTIN WARRANTY AND MAY RESULT IN PERSONAL INJURY AND/OR INJURY TO OTHERS AS WELL AS VEHICLE DAMAGE.**

FOR CALIFORNIA RESIDENTS ONLY-PROP 65 WARNING:

Some products may contain chemicals such as DEHP, which can cause cancer, birth defects or other reproductive harm. For more info go to www.p65warnings.ca.gov



Westin Automotive Products, Inc.
320 W. Covina Blvd
San Dimas, Ca. 91773