

INSTALLATION INSTRUCTIONS

PROMOD FRONT BUMPER

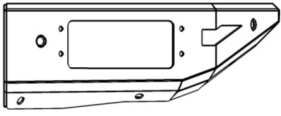


APPLICATION:
Chevrolet Silverado 2500/3500 2015-2019
PART NUMBER:
58-41165

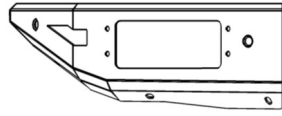
CONTENT			
ITEM	QUANTITY	DESCRIPTION	TOOLS NEEDED
1	1	DRIVER POD	10MM SOCKET
2	1	PASSENGER POD	RATCHET
3	1	CENTER SECTION	TORQUE WRENCH
4	1	DRIVER MOUNTING BRACKET	10MM WRENCH
5	1	PASSENGER MOUNTING BRACKET	13MM SOCKET
6	4	SENSOR L-TAB	13MM WRENCH
7	2	LED LIGHT BRACKET	17MM SOCKET
8	1	DRIVER SUPPORT STRAP	17MM WRENCH
9	1	PASSENGER SUPPORT STRAP	19MM SOCKET
10	4	SENSOR PLUG	19MM WRENCH
11	12	M6 HEX DRIVE BUTTON HEAD BOLT (BLACK ZINC)	CUTTING TOOL
12	12	M6 FLAT WASHER (BLACK ZINC)	
13	2	M8 HEX DRIVE BUTTON HEAD BOLT (BLACK ZINC)	
14	4	M8 FLAT WASHER (BLACK ZINC)	
15	2	M8 HEX NUT (BLACK ZINC)	
16	2	M8 SPLIT LOCK WASHER (BLACK ZINC)	
17	4	M12 SERRATED FLANGE NUT (YELLOW ZINC)	
18	4	M12 HEX HEAD BOLT (YELLOW ZINC)	
19	4	M12 LOCK WASHER (YELLOW ZINC)	
20	8	M12 FLAT WASHER (YELLOW ZINC)	
21	8	M10 FLAT WASHER (YELLOW ZINC)	
22	4	M10 SERRATED FLANGE NUT (YELLOW ZINC)	
23	4	M10 HEX HEAD BOLT (YELLOW ZINC)	
24	12	M6 SERRATED FLANGE NUT (YELLOW ZINC)	
25	4	M6 FLAT WASHER (YELLOW ZINC)	
26	4	M6 HEX NUT (YELLOW ZINC)	
27	4	M6 SQUARENECK ROUND HEAD BOLT (YELLOW ZINC)	
28	4	M6 SPLIT LOCK WASHER (YELLOW ZINC)	
29, 30	2	MESH COVER PLATE (1 DRV, 1 PASS)	

ANTI-SEIZE LUBRICANT MUST BE USED ON ALL STAINLESS STEEL FASTENERS TO PREVENT THREAD DAMAGE AND GALLING

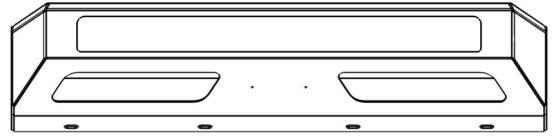




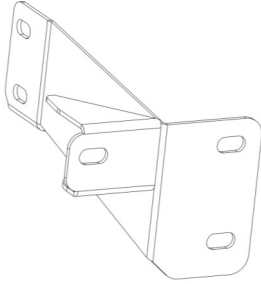
ITEM 1



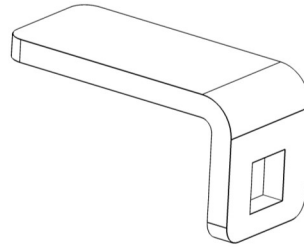
ITEM 2



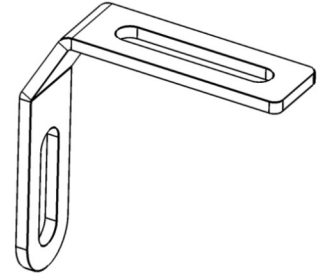
ITEM 3



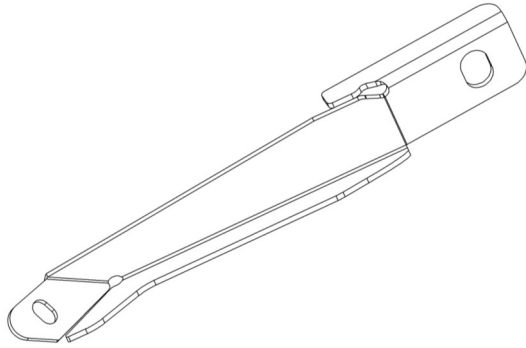
ITEM 4



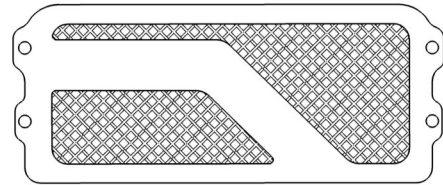
ITEM 6



ITEM 7



ITEM 8



ITEM 30

PROCEDURE

1. Remove contents from box, verify if all parts listed are present and free from damage.
Carefully read and understand all instructions before attempting installation.
Failure to identify damage before installation could lead to a rejection of any claim.

2. Remove OEM bumper
 - a. Open the hood of the vehicle and remove the plastic cover at the front using a pry tool. See **Figure 1**.
 - b. Remove the four bolts holding the grill in place and uninstall the grill. See **Figure 2**.
 - c. Remove the braces on each side of the vehicle by removing the bolts indicated in **Figure 3**.
 - d. Disconnect all electrical connections to the stock bumper.
 - e. Remove the two bolts indicated in **Figure 4** on the driver's side of the vehicle. Repeat procedure on the passenger's side.
 - f. Remove bumper.





Fig. 4

3. Use the supplied M10 Hardware to attach each Side Pod Assembly (1,2) to the Center Section (3). See **Figure 5**.
4. Use the supplied M6 Hardware to attach the LED Brackets (15) to the center section. See **Figure 6**. *Note: If installing an LED Light Bar (sold separately), install it at this time.*

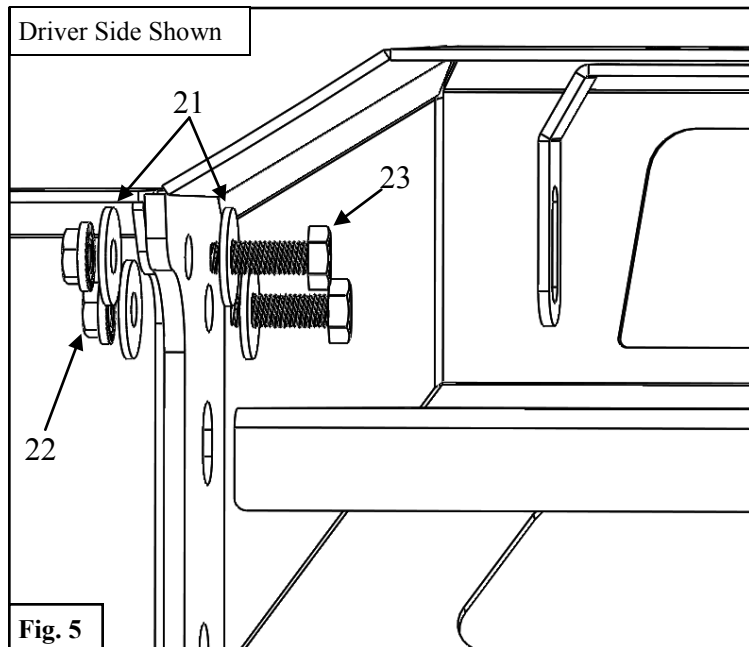


Fig. 5

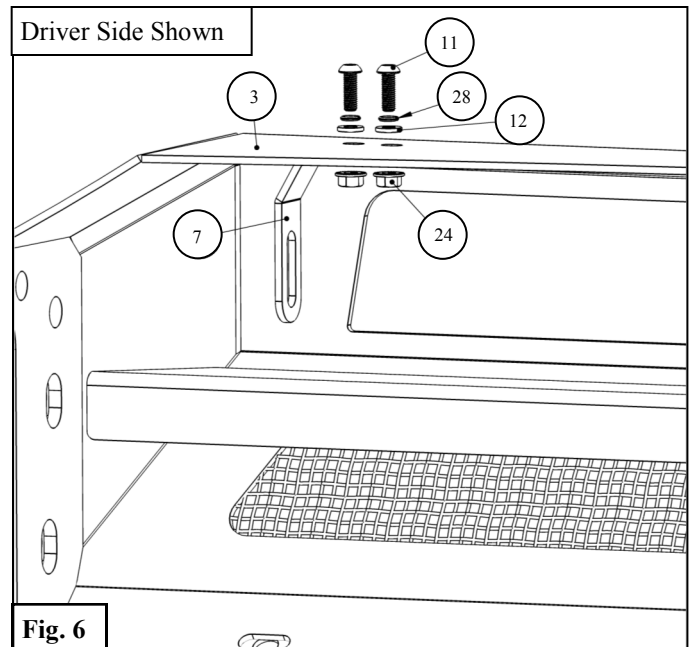
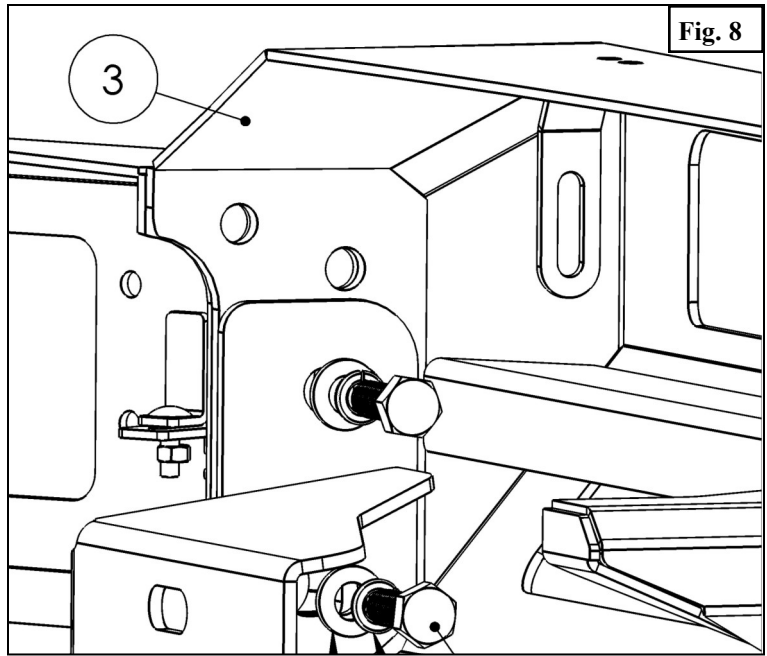
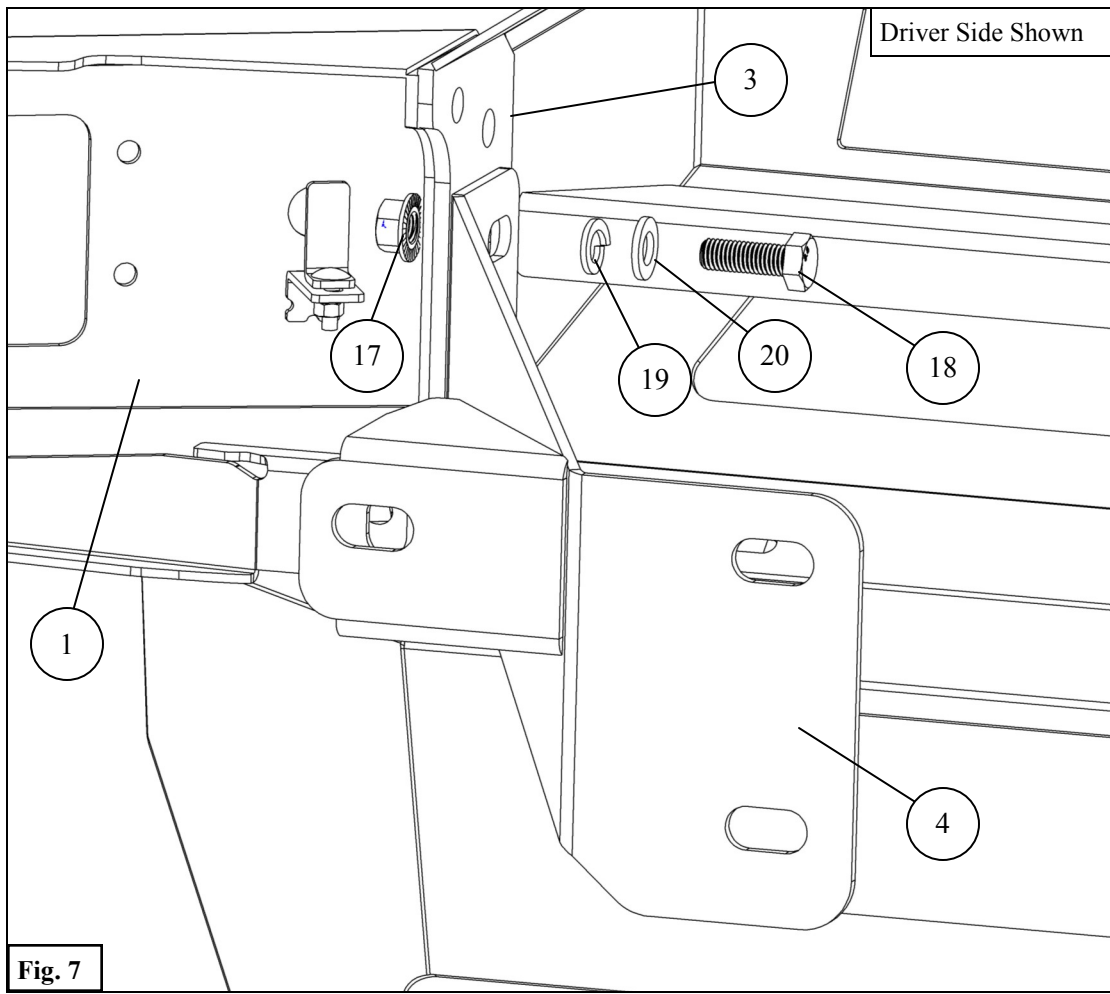


Fig. 6

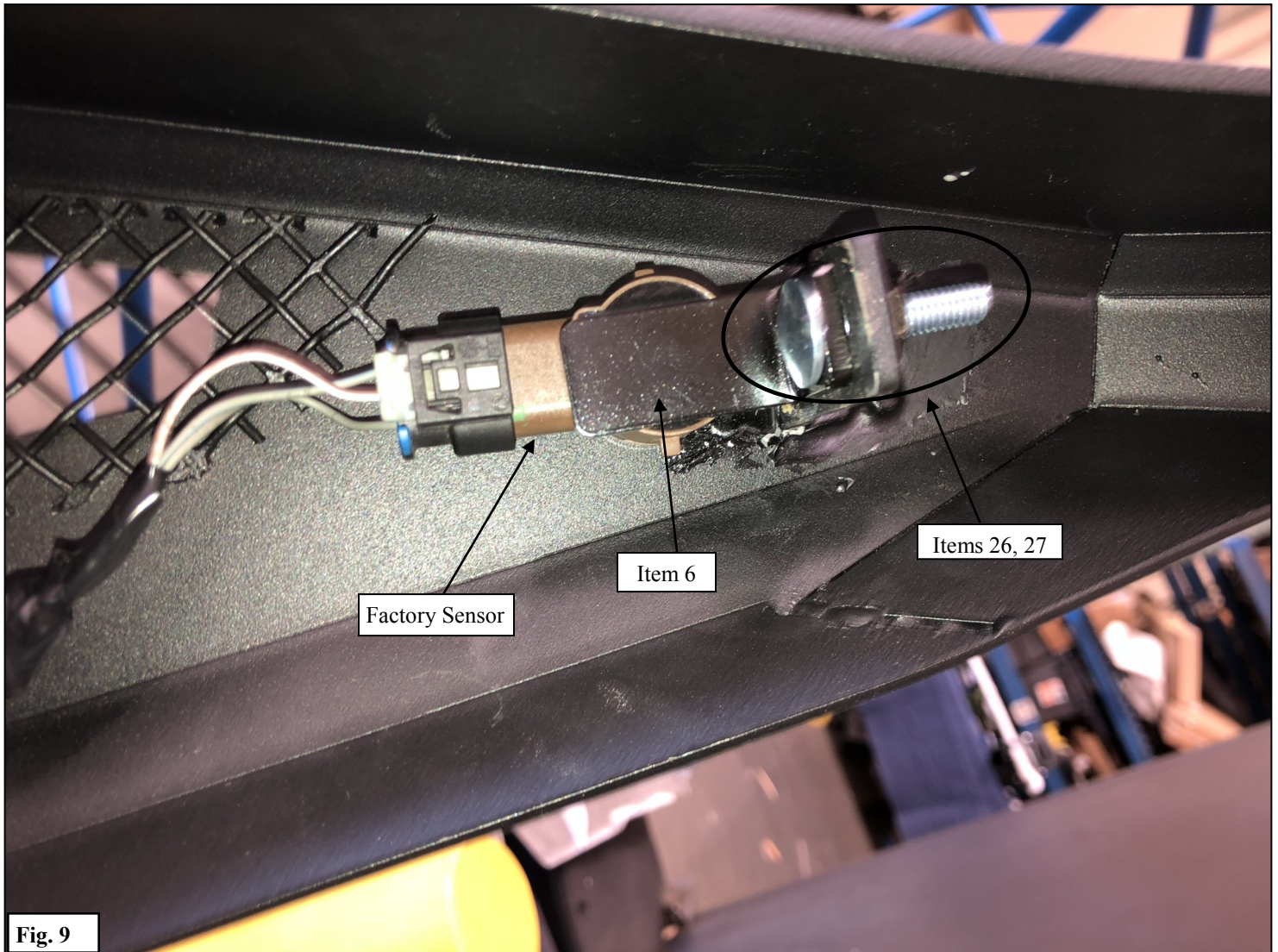
5. Loosely install the bumper assembly to the Mounting Brackets (6,7) using the supplied M12 Hardware. See **Figures 7 & 8.**



PARKING SENSOR INSTALLATION

***If not installing sensors, install Hole Plugs (10) into holes on bumper and proceed**

6. Remove the parking sensors from the OEM bumper.
7. Use the Sensor Tab (6) along with the supplied M6 Hardware (26, 27) to install the sensors as shown in **Figure 9**.
8. Make sure to maintain OEM sensor orientation.
9. Handle sensors with care as they are fragile.

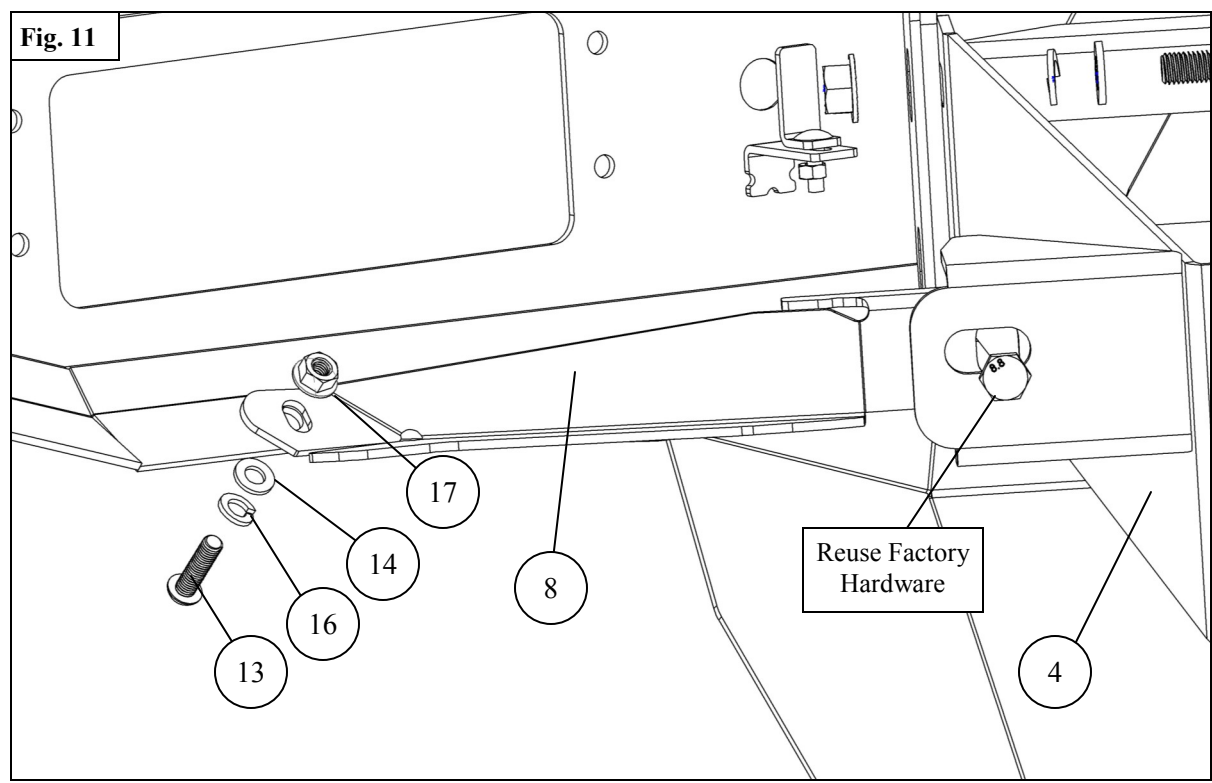


8. Loosely attach the preassembled bumper to the vehicle frame using the Factory Hardware. See **Figure 10**.



Fig. 10

10. Use the supplied M8 and M10 Hardware to secure the Support Straps (16,17) to the bumper. See **Figure 11**.



11. Attach the Mesh Side Covers (5) to the Bumper using the supplied M6 Hardware (11, 12, 24). See **Figures 12 & 13**.

Driver Side Shown

Fig. 12

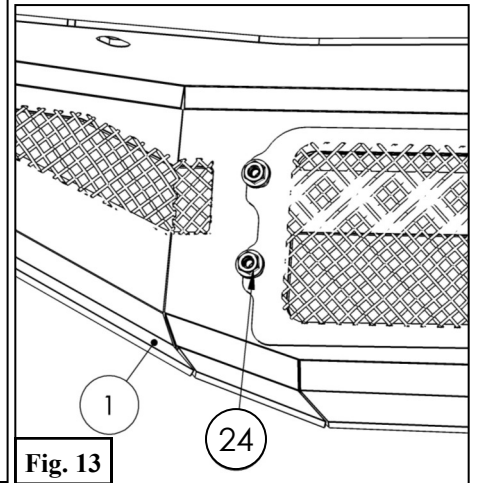
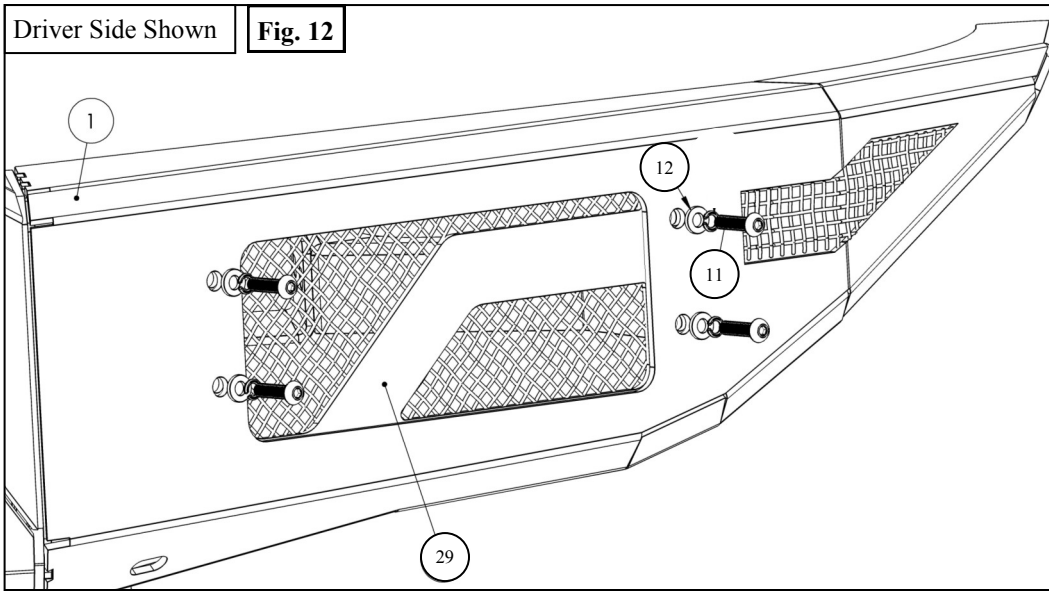


Fig. 13

12. Adjust bumper as needed and torque down all hardware as specified: M6 to 7 ft lbs, M8 to 18 ft lbs, M10 to 38 ft lbs, and M12 to 60 ft lbs.
13. Trim inner fender lining as necessary.





WARNING



Failure to follow these instructions could lead to death, personal injury, and / or property damage.

Failure to follow these instructions could lead to death, personal injury, and / or property damage.

FASTENERS:

All Westin supplied fasteners must be utilized and installed in accordance with the installation instructions and apply torque to the specifications as defined. **DOUBLE CHECK ALL FASTENERS BEFORE INITIAL USE, AND PERIODICALLY IN THE FUTURE TO ENSURE PROPER FUNCTION AND SAFETY.**

DRILLING:

Most Westin products do not require drilling for installation. If drilling is defined as required, use caution when drilling a vehicle. **FAILURE TO REVIEW AN AREA TO BE DRILLED MAY RESULT IN PERSONAL INJURY AND/OR INJURY TO OTHERS AS WELL AS VEHICLE DAMAGE.**

EYE PROTECTION:

ALWAYS WEAR SAFETY GLASSES OR GOGGLES DURING THE INSTALLATION PROCESS TO AVOID PERSONAL INJURY.

MAXIMUM TOWING/CARRYING CAPACITY: (if applicable)

The Westin Receiver Hitches will have a visible tow rating label affixed directly on the product. User should never exceed the vehicle manufacturers maximum tow and weight rating regardless of the capacity of the hitch. **FAILURE TO FOLLOW THESE GUIDELINES WILL VOID THE WESTIN WARRANTY AND MAY RESULT IN PERSONAL INJURY AND/OR INJURY TO OTHERS AS WELL AS VEHICLE DAMAGE.**

FOR CALIFORNIA RESIDENTS ONLY-PROP 65 WARNING:

Some products may contain chemicals such as DEHP, which can cause cancer, birth defects or other reproductive harm.



Learn more about off-road bumpers we have.