

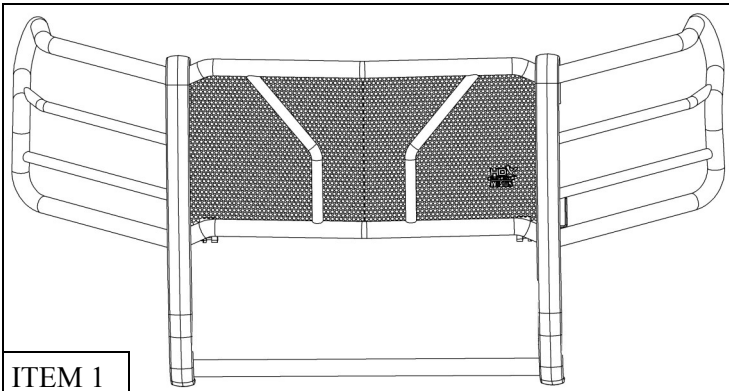
INSTALLATION INSTRUCTIONS

HDX Grille Guard/ MAX Winch Tray

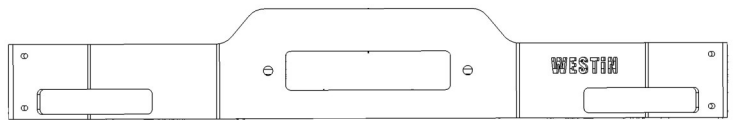
**APPLICATION:****2020 Chevrolet Silverado 2500/3500****PART NUMBER:****46-23995, 57-93995**

ITEM	QUANTITY	DESCRIPTION	TOOLS NEEDED
1	1	GRILLE GUARD	RATCHET
2	1	MAX WINCH TRAY	ALLEN KEY
3	1	LOWER DRIVER MOUNTING BRACKET	16mm SOCKET
4	1	LOWER PASSENGER MOUNTING BRACKET	17mm SOCKET
5	1	DRIVER INSIDE SUPPORT BRACKET	18mm SOCKET
6	1	PASSENGER INSIDE SUPPORT BRACKET	16mm WRENCH
7	1	DRIVER UPPER STRAP	17mm WRENCH
8	1	PASSENGER UPPER STRAP	18mm WRENCH
9	2	SPACER BLOCK	TORQUE WRENCH
MAX WINCH TRAY HARDWARE			
10	14	M12 FLAT WASHER (BLACK ZINC)	CUTTING TOOL
11	8	M12 SPLIT LOCK WASHER (BLACK ZINC)	
12	6	M12 HEX NUT (BLACK ZINC)	
13	6	LONG M12 HEX HEAD BOLT CLASS 10.9 (BLACK ZINC)	
14	2	SHORT M12 HEX HEAD BOLT (BLACK ZINC)	
15	4	M12 SERRATED FLANGE HEX NUT (BLACK ZINC)	
16	4	M12 SERRATED FLANGE HEX HEAD BOLT (BLACK ZINC)	
GRILLE GUARD HARDWARE			
17	6	M12 HEX HEAD FLANGE BOLT (BLACK ZINC)	
18	12	M12 SERRATED FLANGE HEX NUT (BLACK ZINC)	
19	2	M10 HEX SOCKET BUTTON HEAD BOLT (BLACK ZINC)	
20	2	M10 BELLVILLE WASHER (BLACK ZINC)	
21	2	M10 SERRATED FLANGE HEX NUT (BLACK ZINC)	
22	6	M12 BELLVILLE WASHER (BLACK ZINC)	
23	6	M12 HEX SOCKET BUTTON HEAD BOLT (BLACK ZINC)	
ANTI-SEIZE LUBRICANT MUST BE USED ON ALL STAINLESS STEEL FASTENERS TO PREVENT THREAD DAMAGE AND GALLING.			

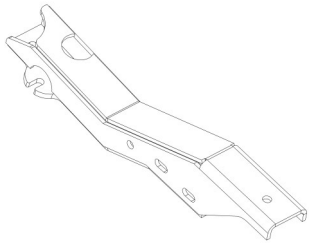




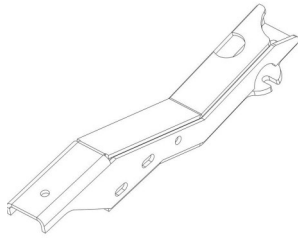
ITEM 1



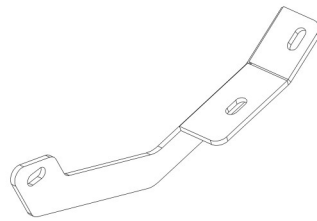
ITEM 2



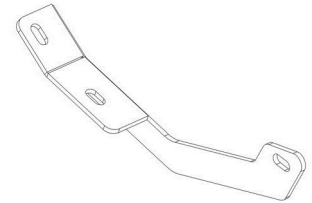
ITEM 3



ITEM 4

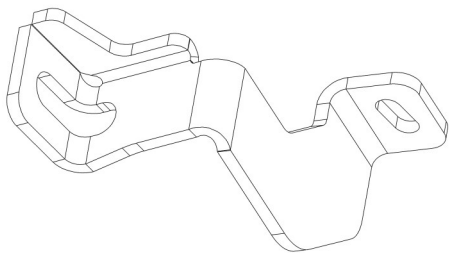


ITEM 5

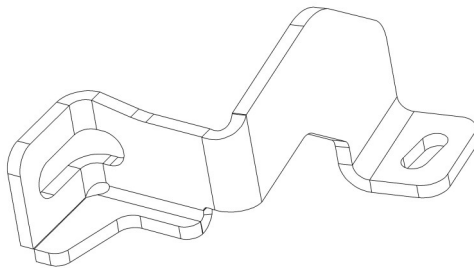


ITEM 6

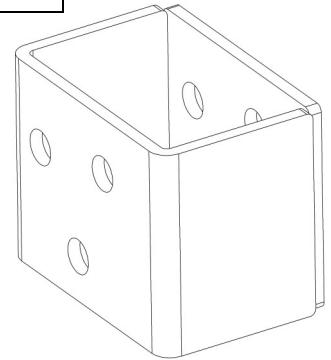
ITEM 7



ITEM 8



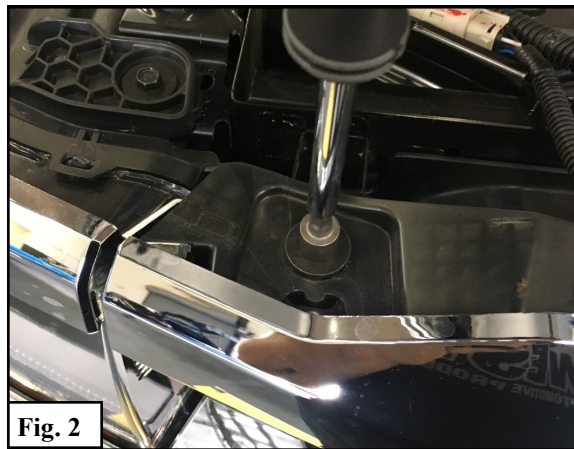
ITEM 9



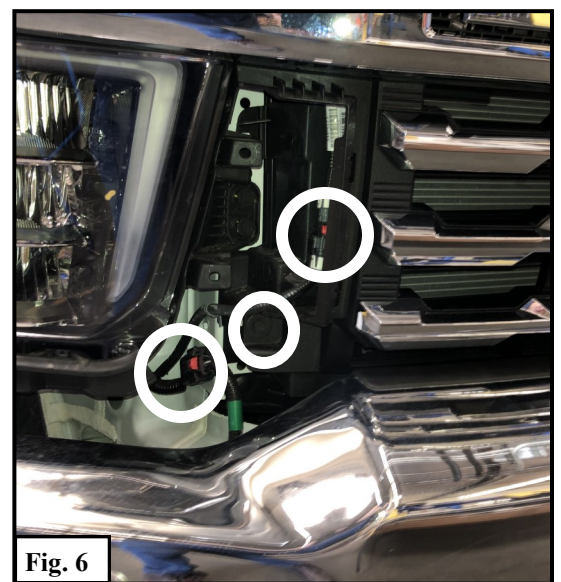
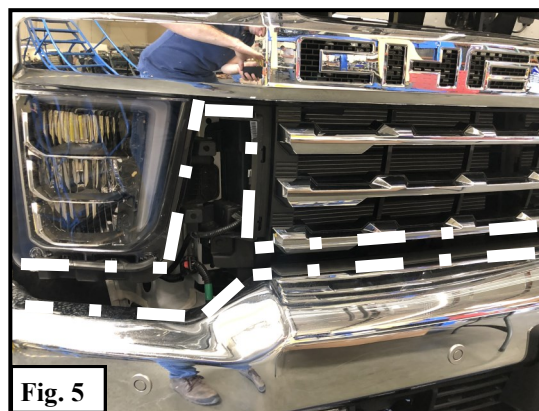
PROCEDURE

1. Remove contents from box, verify if all parts listed are present and free from damage.
Carefully read and understand all instructions before attempting installation.
Failure to identify damage before installation could lead to a rejection of any claim.

2. Open the hood of the vehicle and remove the plastic cover at the front using a pry tool. See **Figure 1**.
3. Remove the four bolts holding the grille in place. See **Figure 2**.
4. Remove 2 bolts attaching wheel well cover to filler panel. See **Figure 3**.



5. Pry off fenders to access the filler panel clips. See **Figure 4**.
6. Pry filler panel off removing any necessary bolts. See **Figure 5**.
7. Disconnect any electrical plugs and any bolts still attaching the grill to the vehicle. See **Figure 6**.
8. Pry remaining clips attaching the grill to the vehicle to remove the grille.



9. Remove 4 upper bumper bolts attaching the bumper to the frame and remove 2 bottom bolts attaching bumper arm to the frame. See **Figure 7 & 8**.

10. Remove Bumper.

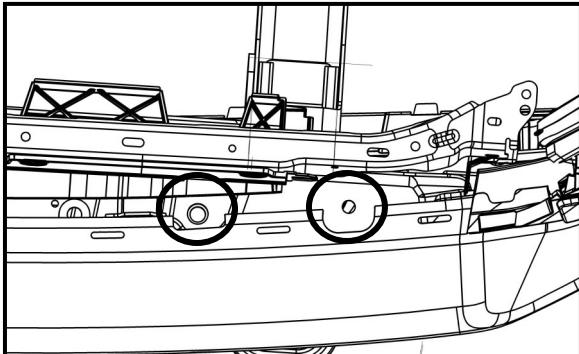


Fig. 7

Bolts will be exposed after removing the grille and lifting the plastic covering them

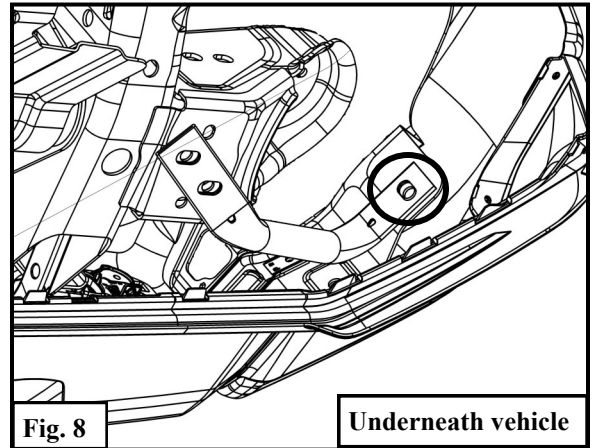


Fig. 8

Underneath vehicle

11. Locate the lower driver mounting brackets for the MAX winch tray. Using the supplied M12 hardware, loosely install the mounting brackets on to the frame. Slide the mounting bracket (3) in between the frame. The support bracket (5) goes under the frame. See **Figure 9 & 10**.

12. Repeat on the passenger side.

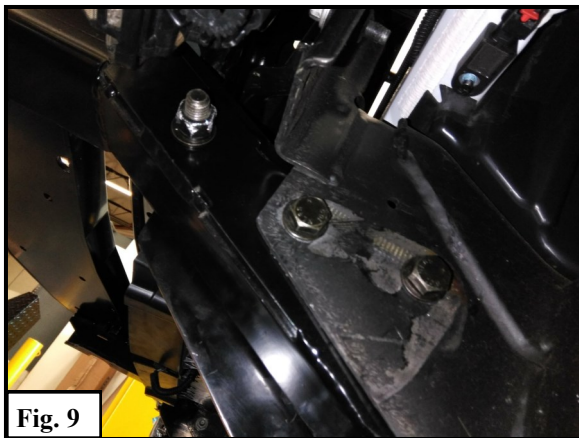


Fig. 9

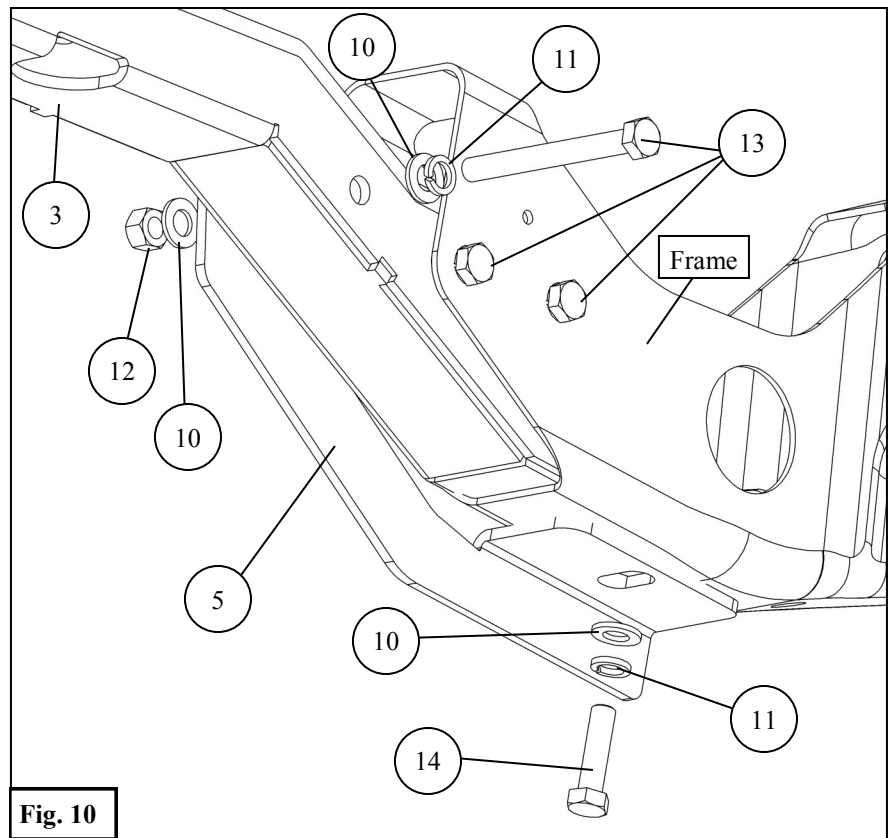


Fig. 10

13.

- **If you are installing the HDX Grille Guard:** Locate the upper support straps (7) for the grille guard. Loosely re-install the front bumper with the upper support straps. **Note: Trimming of tow pocket is required.** Trim out the tow hook pockets as necessary for the bracket clearance. The winch mount brackets will slide right through the previously trimmed tow hook pockets when reinstalling the bumper. Reconnect all electrical connections. The upper factory bumper bolts will be used for the upper support straps. Measure the distance between the mounting surfaces of the upper straps and ensure it is about 42.25". Torque to 50-55 ft-lbs. **See Figure 11-13.**
- **If you are only installing Max Winch Tray:** Re-install the front bumper and reconnect all electrical connections. **Note: Trimming of tow pocket is required.** Trim out the tow hook pockets as necessary for the bracket clearance. **See Figure 12.**

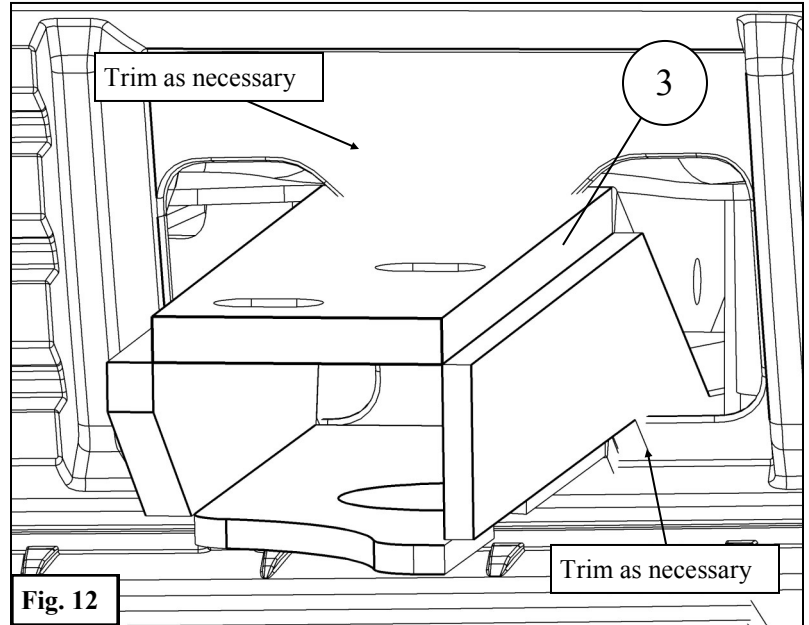
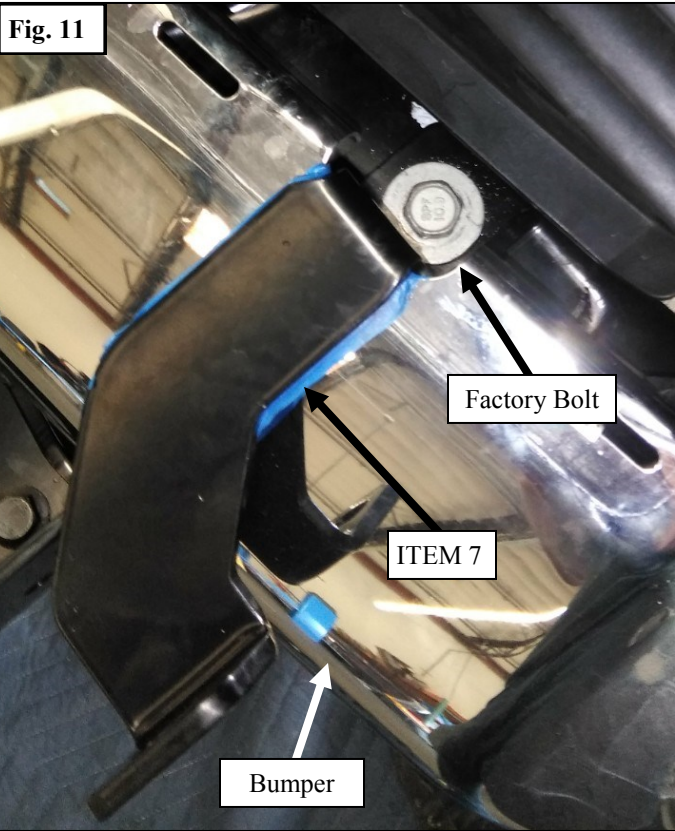
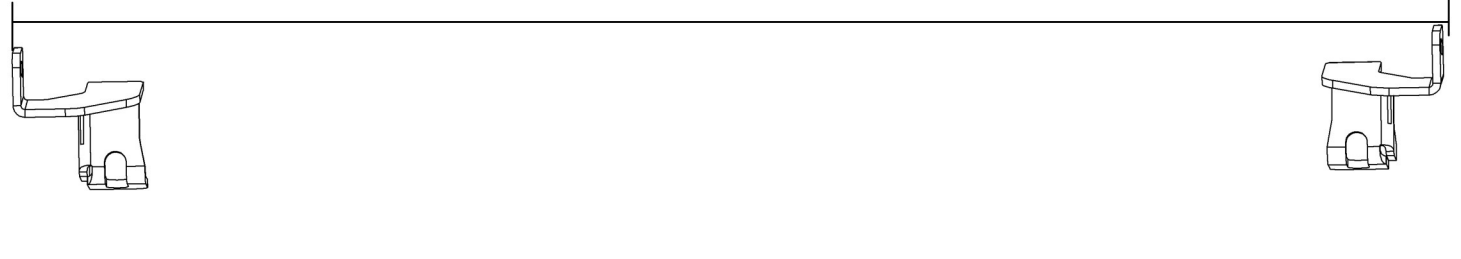


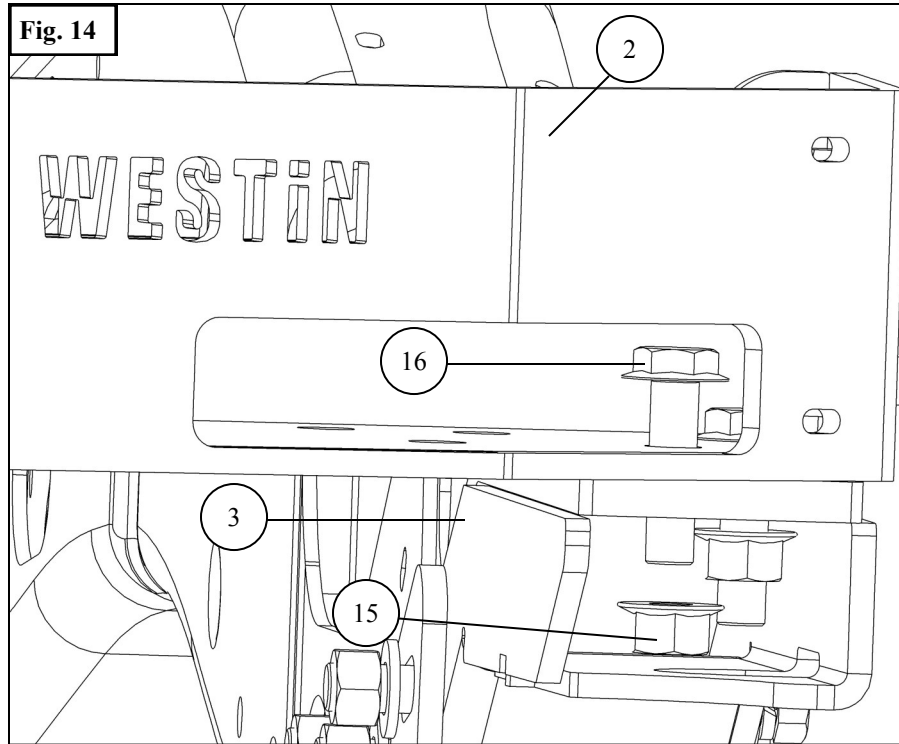
Fig. 13

42.25 inches

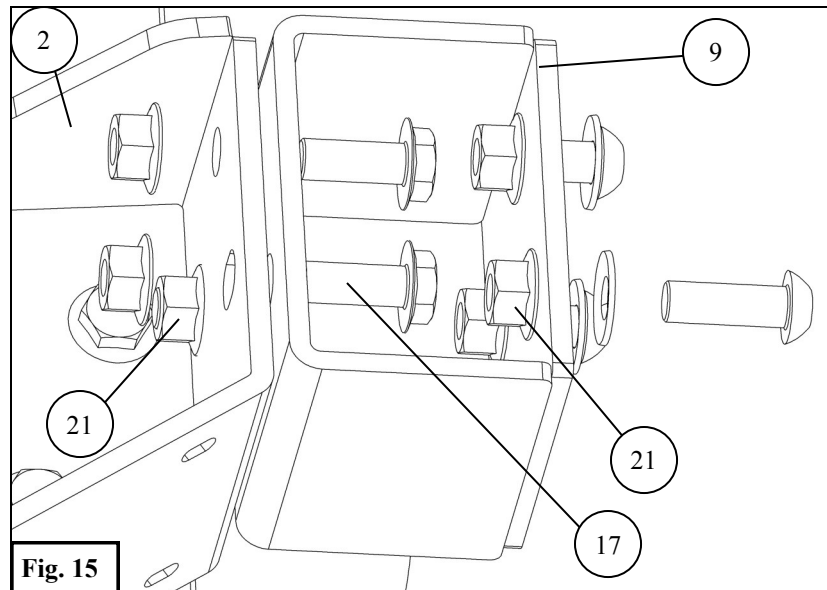


14. REINSTALL FILLER PANEL AND GRILLE IN REVERSE ORDER AS INSTRUCTED.

15. Locate the Winch Tray (2) and using the supplied flanged M12 Hardware, loosely assemble the Winch Tray to the mounting brackets. See **Figure 14**
16. **If only installing the MAX Winch Tray:** If you are installing a winch, do so at this time. Adjust as needed and torque all hardware as specified: M12 to 50-55 ft-lbs. **Winch Tray Install Complete**

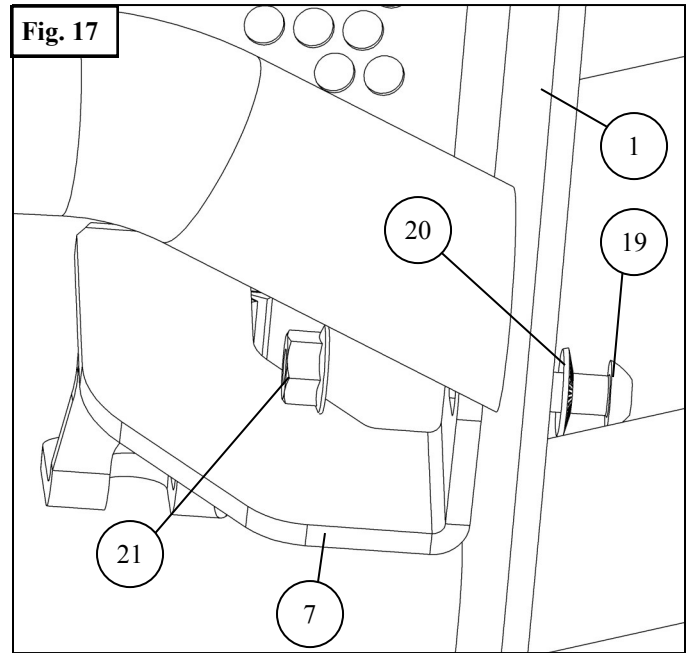
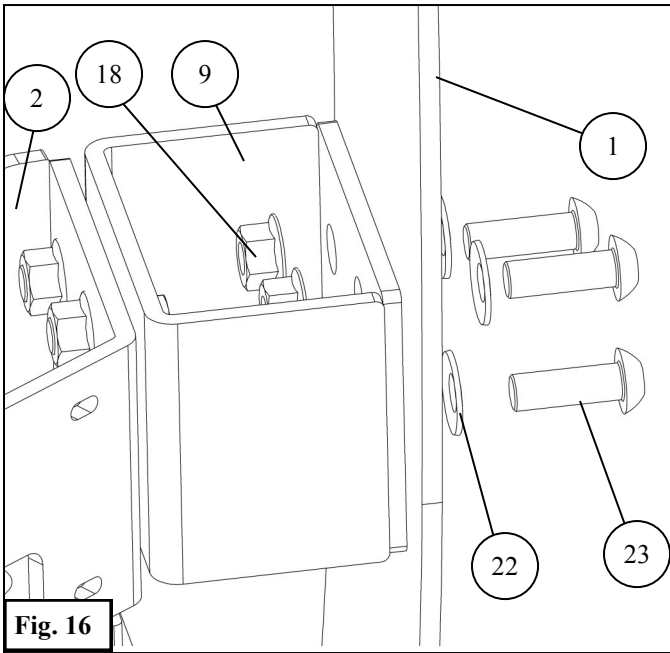


17. **If installing the HDX grille guard: Install winch first!** Locate the spacer blocks (9) and using supplied M12 hardware, mount the spacer blocks to the winch tray. See **Figure 15**



18. With help, install the Grille Guard over the spacer blocks and previously installed upper support brackets. Using the supplied M12 hardware. See **Figures 16 & 17**.

19. Align as necessary and torque all hardware as specified: M12 to 50-55 ft-lbs., M10 to 30-35 ft-lbs.



CARE INSTRUCTIONS

- REGULAR WAXING IS RECOMMENDED. DO NOT USE ANY TYPE OF POLISH OR WAX THAT MAY CONTAIN ABRASIVES.
- STAINLESS STEEL PRODUCTS CAN BE CLEANED WITH MILD SOAP AND WATER. STAINLESS STEEL POLISH SHOULD BE USED TO POLISH SMALL SCRATCHES.
- GLOSS BLACK FINISHES SHOULD BE CLEANED WITH MILD SOAP AND WATER.