



SIGNATURE OF QUALITY

AUTOMOTIVE PRODUCTS, INC.

INSTRUCTIONS

APPLICATION: UNIVERSAL
PART NUMBER: 50-XXXX OVAL BED RAILS

ITEM	QUANTITY	DESCRIPTION	TOOLS NEEDED
1	2	OVAL BED RAILS	4MM ALLEN KEY
2	4	STAINLESS STEEL THREADED HOLD DOWN PLATE	
3	4	STAINLESS STEEL THREADED PARALLELOGRAM HOLD DOWN PLATE	
3	4	M10 STAINLESS STEEL WASHERS	
4	4	M10 X 50 MM BUTTON HEAD SCREWS STAINLESS STEEL	
5	1	6MM ALLEN KEY	

1. Remove all contents from box. Verify all parts listed are present and free from damage. Carefully read and understand all instructions before attempting installation.
2. Loosely assemble the button head screw and threaded plate to both ends of bed rail. Depending on your vehicle use the correct threaded hold down plate. For smaller stake pockets use the parallelogram threaded plate, for large stake pocket holes use the rectangular threaded plate. (figure 1)
3. Insert threaded plate into stake pocket hole. (figure 2), (figure 3)
4. Tighten button head screw with supplied hex key. Threaded plate should lock inside the stake pocket channel. (figure 4)
5. Recommend using anti seize compound for bolt threads to prevent seizing.
6. If necessary mounting plate is adjustable by loosening socket cap screws with a 4mm hex key and adjust as needed. (figure 5)
7. Tighten all hardware at this time

FINISH PROTECTION

Westin products have a high quality finish that must be cared for like any other exposed finish on the vehicle. Protect the finish with a non-abrasive automotive wax, (e.g. Pure Carnauba) on a regular basis. The use of any soap, polish or wax that contains an abrasive is detrimental, as the compounds scratch the finish and open it to corrosion.



SIGNATURE OF QUALITY

INSTRUCTIONS

APPLICATION: UNIVERSAL
PART NUMBER: 50 SERIES OVAL BED RAILS



FIGURE 1



FIGURE 2



FIGURE 3



FIGURE 4



FIGURE 5

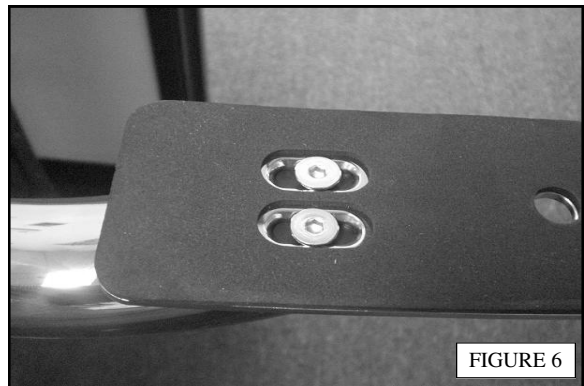


FIGURE 6