



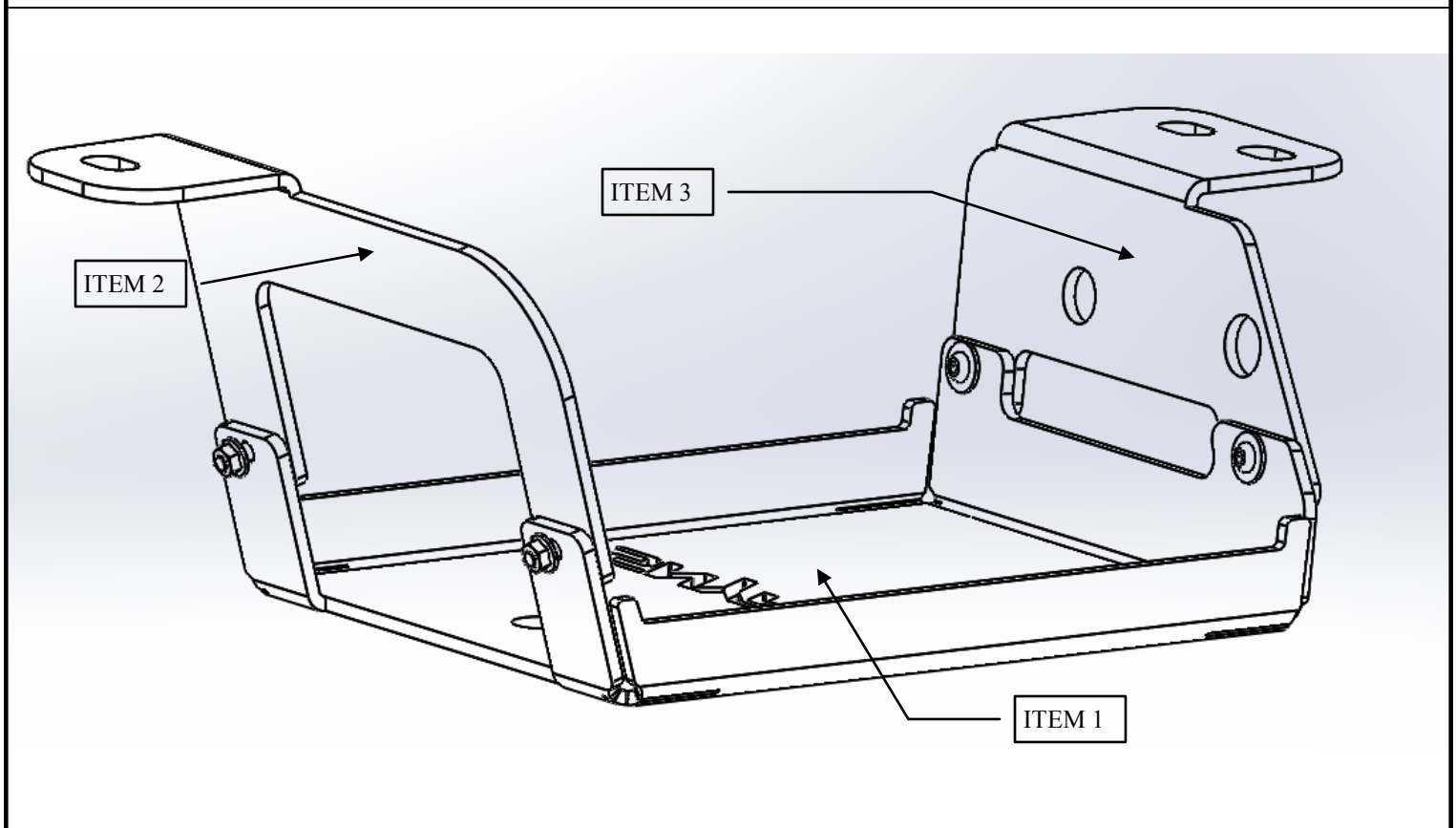
INSTALLATION INSTRUCTIONS

AUTOMOTIVE PRODUCTS,

Snyper Evap Skid Plate
APPLICATION:
Jeep Wrangler 20012-2017
Jeep Wrangler Unlimited 2012-2017
PART NUMBER: 42-21035

CONTENT			
ITEM	QUANTITY	DESCRIPTION	TOOLS NEEDED
1	1	Evap Skid Plate	16MM Socket
2	1	Rear Bracket	Ratchet
3	1	Front Bracket	Torque Wrench
4	4	M6 Button Head Bolt	13MM Socket
5	4	M6 Flat Washer	4 MM Allen Wrench
6	4	M6 Serrated Flange Nut	Needle Nose Pliers
			13MM Wrench

ANTI-SEIZE LUBRICANT MUST BE USED ON ALL STAINLESS STEEL FASTENERS TO PREVENT THREAD DAMAGE AND GALLING

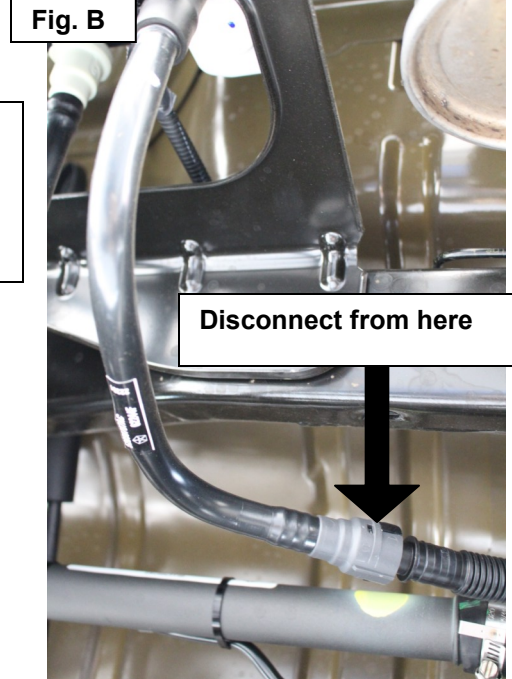
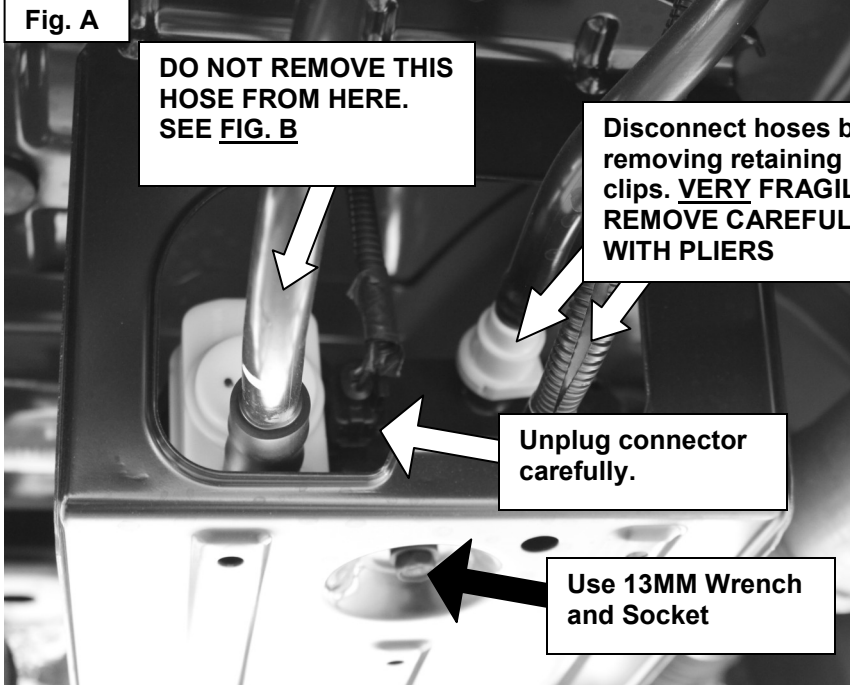


Thank you for choosing Westin products.

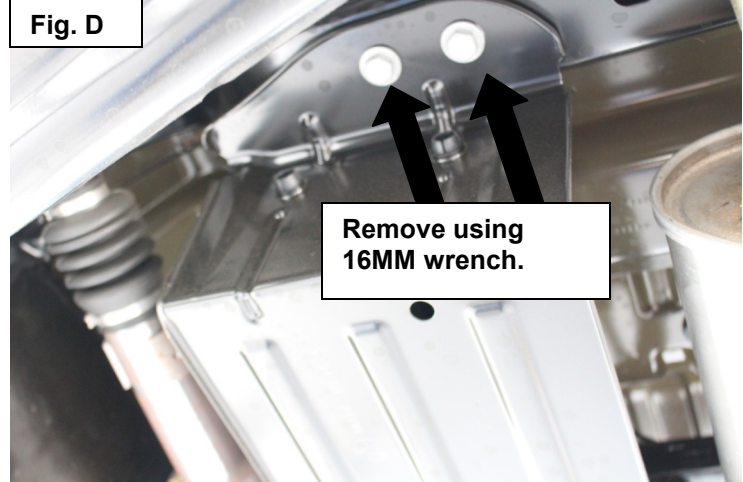
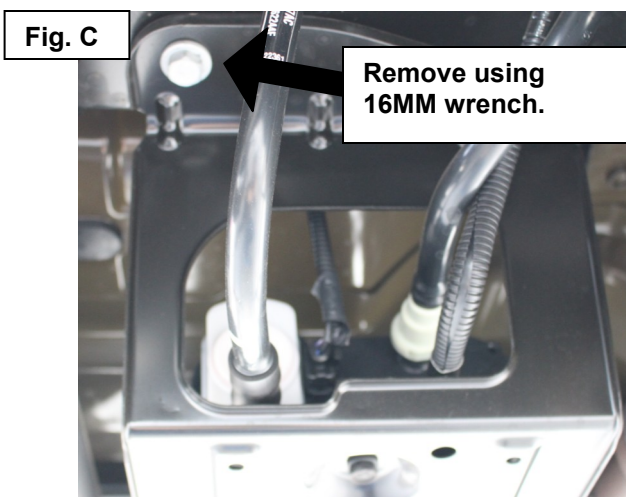
PROCEDURE

1. Remove contents from box, verify if all parts listed are present and free from damage.
Carefully read and understand all instructions before attempting installation.
(This skid plate can be installed by one person but it is highly recommended to have assistance of a second person.)
Failure to identify damage before installation could lead to a rejection of any claim.

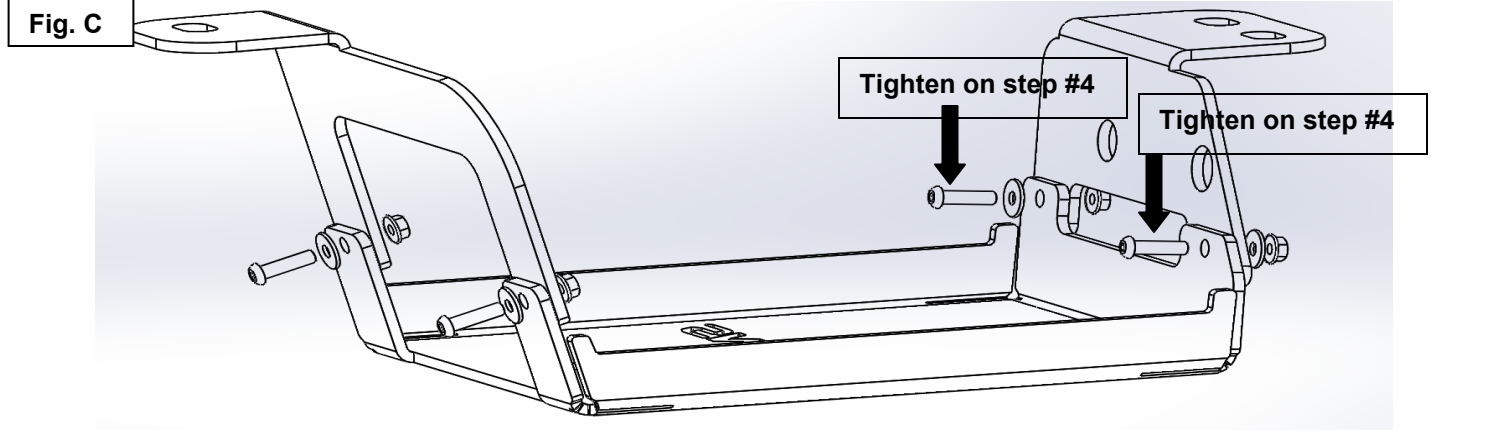
2. Locate evap canister assembly and remove carefully by disconnecting connector and hoses (See **Fig. A**) and by removing the 3 bolts holding the assembly to the vehicle frame. (See **Fig C** and **Fig. D**).



3. Proceed to remove the evap canister from the stock skid plate by removing the bolt at the bottom using 13MM wrench and socket. See Fig. A

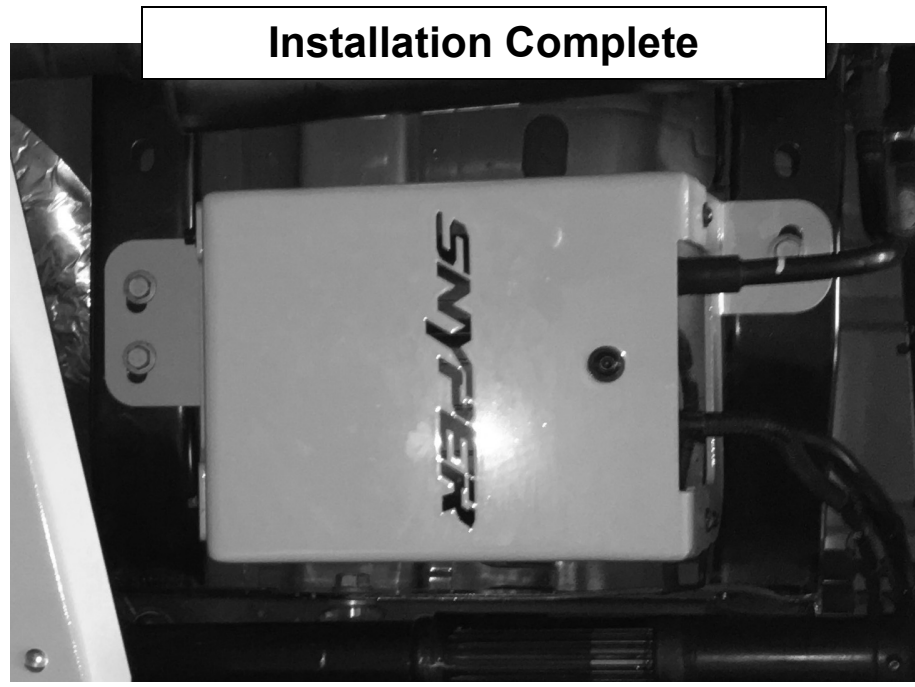


4. Using the supplied M6 hardware, loosely assemble the evap skid plate and the brackets exactly as the diagram below. (Note position of each bracket as well as bolts.). Then position the evap canister in the skid plate and fasten using the stock bolt removed in step 3. Then tighten the front bracket and the bottom bolt to 15-17 ft-lbs. Do not tighten the rear bracket. It will be tightened at the end.



5. Once evap canister is mounted in Snyder skid plate, bolt the assembly on the vehicle using the stock bolts removed and tighten to 30-35 ft-lbs. Then proceed to tighten rear bracket M6 hardware to 15-17 ft-lbs.

6. Connect all hoses and the connector back to their positions.



CARE INSTRUCTIONS

- REGULAR WAXING IS RECOMMENDED. DO NOT USE ANY TYPE OF POLISH OR WAX THAT MAY CONTAIN ABRASIVES.
- STAINLESS STEEL PRODUCTS CAN BE CLEANED WITH MILD SOAP AND WATER. STAINLESS STEEL POLISH SHOULD BE USED TO POLISH SMALL SCRATCHES.
- GLOSS BLACK FINISHES SHOULD BE CLEANED WITH MILD SOAP AND WATER.



Thank you for choosing Westin products.