



# INSTALLATION INSTRUCTIONS

Snyper Transfer Case Skid Plate

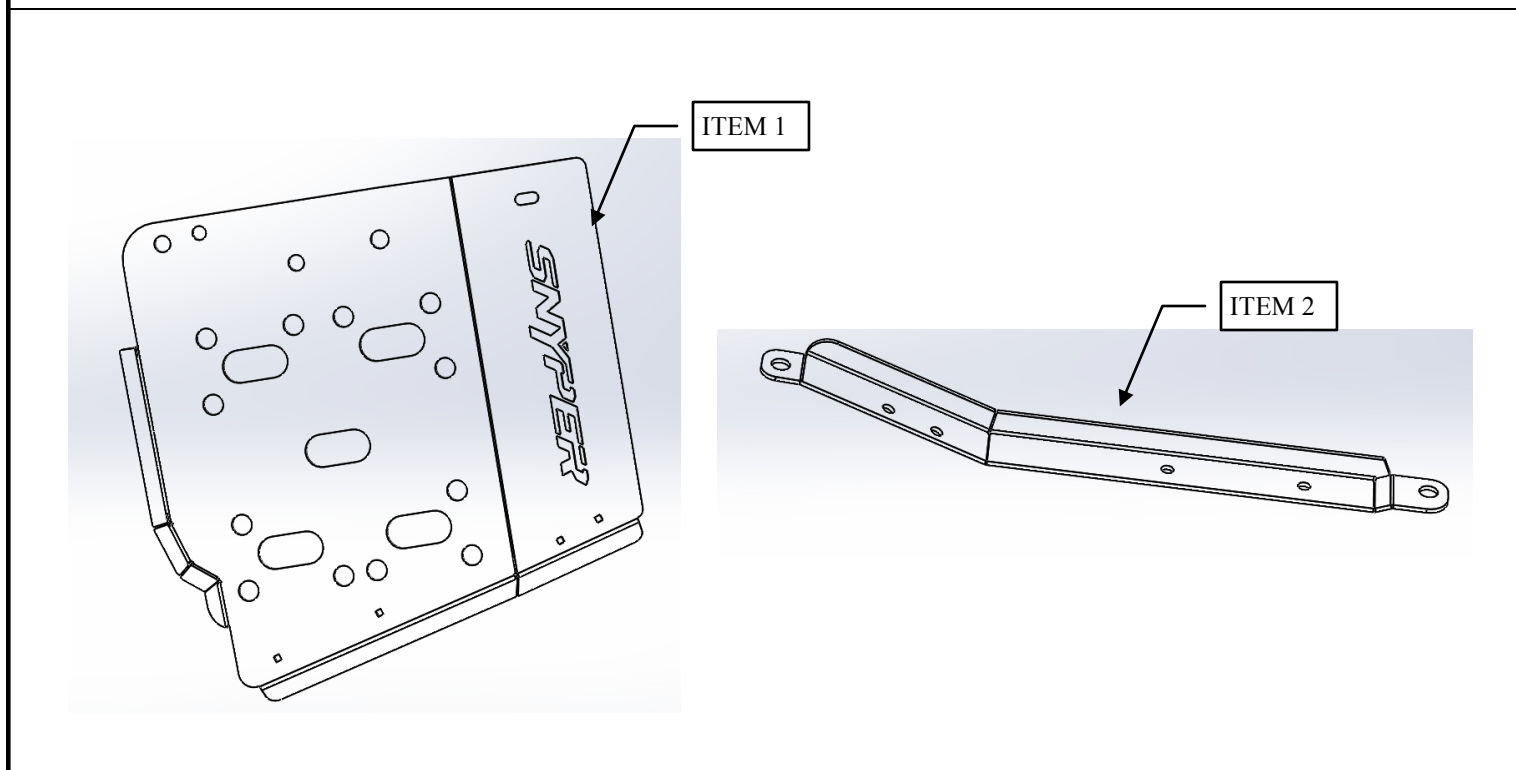
APPLICATION:

Jeep Wrangler Unlimited 2007-2016 Jeep Wrangler  
Unlimited 2007-2016 PART NUMBER: 42-21025

AUTOMOTIVE PRODUCTS,

CONTENT			
TEM	QUANTITY	DESCRIPTION	TOOLS NEEDED
1	1	Transfer Case Skid Plate	18MM Socket
2	1	Mounting Bar	Ratchet
3	4	Plastic Retainer Square, M8	Torque Wrench
4	4	M8 Split Lock Washer	13MM Socket
5	4	M8 Flat Washer	
6	4	M8 Hex Nut	
7	4	M8 Carriage Bolt	

ANTI-SEIZE LUBRICANT MUST BE USED ON ALL STAINLESS STEEL FASTENERS TO PREVENT THREAD DAMAGE AND GALLING

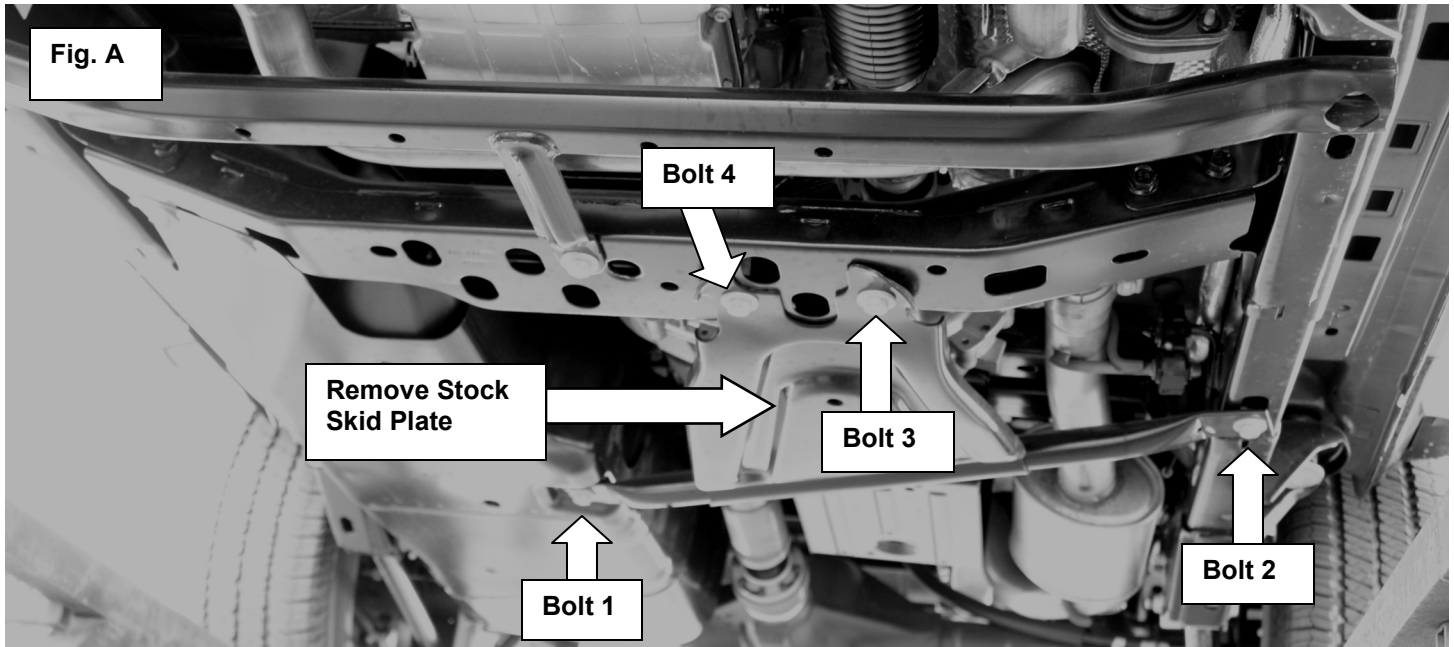


Thank you for choosing Westin products.

## PROCEDURE

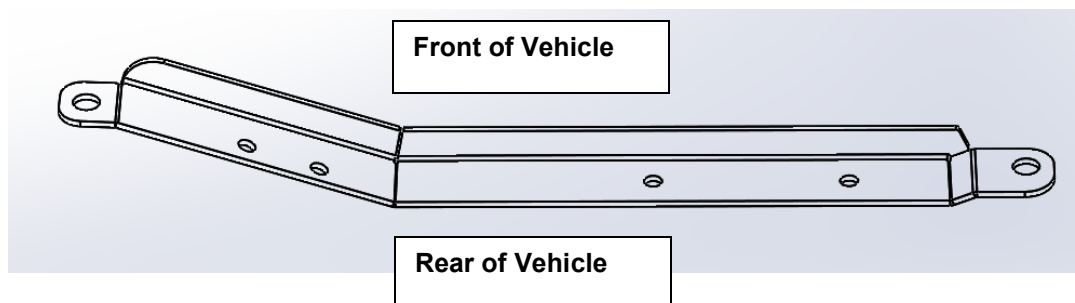
1. Remove contents from box, verify if all parts listed are present and free from damage. Carefully read and understand all instructions before attempting installation. (This skid plate can be installed by one person but it is highly recommended to have assistance of a second person.) **Failure to identify damage before installation could lead to a rejection of any claim.**

2. Remove stock transfer skid plate **Fig. A** and save the hardware removed. It will be used to install your Snyder Transfer Case Skid Plate.



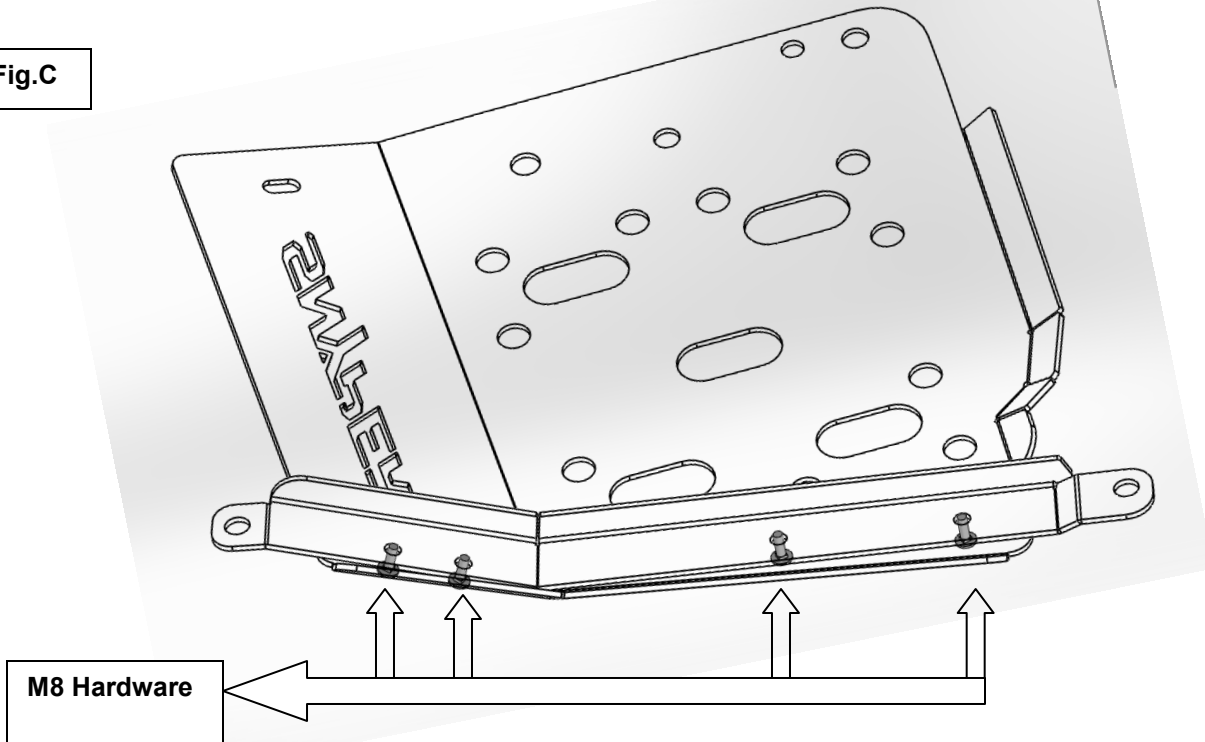
3. Install Mounting Bar from bolt 1 to bolt 2 as depicted in **Fig.A**. Position Mounting Bar with flange towards front of vehicle. See **Fig.B**.

Fig. B



3. Align Skid plate to mounting bar and install M8 hardware hardware. See **Fig.C**.

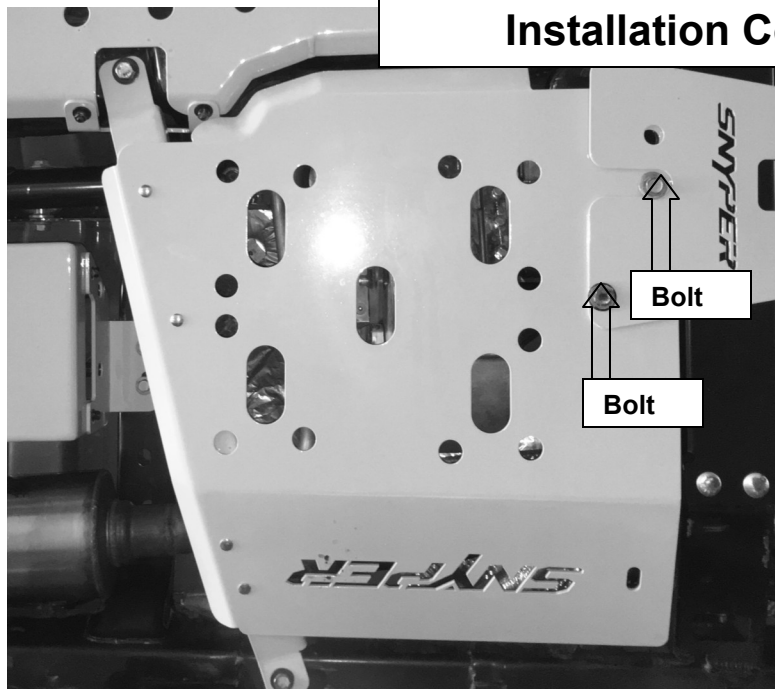
**Fig.C**



4. Install stock bolts that mount skid plate to crossmember and tighten to 50-55 Ft-Lbs. See **Fig. D**.

5. Tighten M8 hardware to 15-17 Ft-Lbs.

**Fig.D**



**Installation Complete**

#### CARE INSTRUCTIONS

- REGULAR WAXING IS RECOMMENDED. DO NOT USE ANY TYPE OF POLISH OR WAX THAT MAY CONTAIN ABRASIVES.
- STAINLESS STEEL PRODUCTS CAN BE CLEANED WITH MILD SOAP AND WATER. STAINLESS STEEL POLISH SHOULD BE USED TO POLISH SMALL SCRATCHES.
- GLOSS BLACK FINISHES SHOULD BE CLEANED WITH MILD SOAP AND WATER.