



**INSTALLATION INSTRUCTIONS**  
**2007-13 CHEVY SILVERADO 1500**  
**Part # 45-2270, 40-2275**

**PARTS LIST:**

1	Grille Guard
2	Frame Mounting Brackets
2	Lower Frame Support Brackets
2	Top Brackets
6	12-1.75mmX35mm Hex Head Bolts, Stainless Steel
12	12mm Flat Washers, Stainless Steel
6	12mm Nuts, Stainless Steel
6	12mm Lock Washers, Stainless Steel
8	12-1.75mmX35mm Hex Head Bolts, Yellow Zinc
16	12mm Flat Washers, Yellow Zinc
8	12mm Nuts, Yellow Zinc
8	12mm Lock Washers, Yellow Zinc
2	10-1.50mmX35mm Button Head Bolts, Stainless Steel
2	10mm Oversized Flat Washers, Stainless Steel
2	10mm Nuts, Stainless Steel
2	10mm Flat Washers, Stainless Steel
2	10mm Lock Washers, Stainless Steel

**Note:** Westin advises the installer to use a thread lubricant on all stainless hardware.

**PROCEDURE:**

1. REMOVE CONTENTS FROM BOX AND VERIFY ALL PARTS ARE PRESENT. READ INSTRUCTIONS CAREFULLY. **NOTE: DO NOT ATTEMPT INSTALLATION ALONE; PERSONAL INJURY OR DAMAGE TO THE VEHICLE MAY RESULT.**
2. Locate, remove and set aside the hardware kit and the brackets. Determine the driver and passenger side brackets.
3. Open the hood and remove the radiator cover to access the factory grille shell. Using a small flat head screwdriver, remove the retainer plugs.
4. Use a 10MM socket to remove the two outer bolts from the grille shell.
5. Using a pair of “needle nose” pliers, squeeze the six grille mounting clips. (Fig 1) Begin from one end of the grille and insert a small screwdriver into the clips to prevent them from popping back into place. Remove the grille by pulling on it gently and evenly forward.
6. Remove the two top existing frame bolts and install them into the upper brackets. Reinstall the bolts but leave them loose. (Fig 2).
7. Reinstall the factory grille shell at this time, line up the clips and gently push it into place. Do not reinstall top covers at this time.
8. Using a sharp utility knife cut out an opening to allow the bumper brackets to pass through (Fig 3).
9. Remove the tow hook bolts and use them to install the frame brackets and the support brackets. The tow hooks remain in their stock position in the frame rails (Fig 4). Install the Mounting Brackets on the outer side of the tow hooks. If your vehicle is not equipped with tow hooks, use the supplied yellow zinc hardware to install the brackets. Install loosely.

10. Connect the lower support bracket to the frame mounting bracket using one of the Yellow Zinc M12 bolts, two washers, a lock washer, and a nut supplied with your grille guard (Fig 5-8). **NOTE:** The driver side mounting bracket mounts to one tow hook bolt and the driver side support bracket mounts to two tow hook bolts. The passenger side mounting bracket mounts to two tow hook bolts and the passenger side support bracket mounts to one tow hook bolt (Fig 5, 6, 7, and 8). Install Loosely
11. With help, position the grille guard and install the six stainless steel M12 bolts and hardware into the bottom bracket.
12. Install the two stainless steel M10 bolts, four washers, two lock washers, and two nuts in the top brackets. (Fig 9)
13. Level and adjust the bar and the brackets and tighten all the fasteners.
14. After you are sure all mounting bolts are tight, reinstall the top plastic shields.



Fig 1

Remove two upper existing bumper mounting bolts and use them to mount upper supports

Pinch grille mounting clips and remove grille from truck

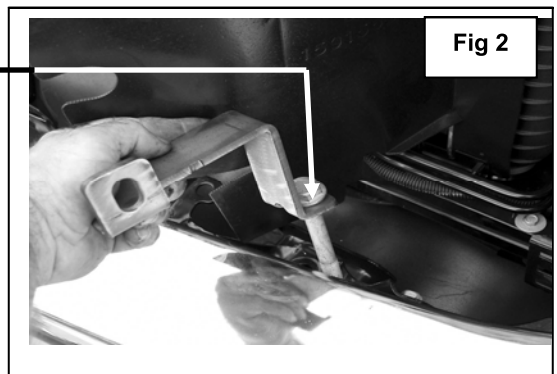


Fig 2

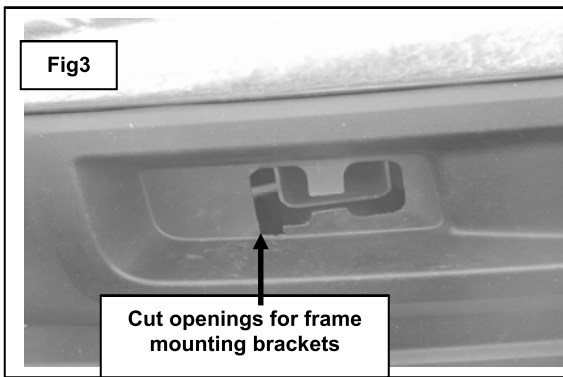


Fig3

Cut openings for frame mounting brackets

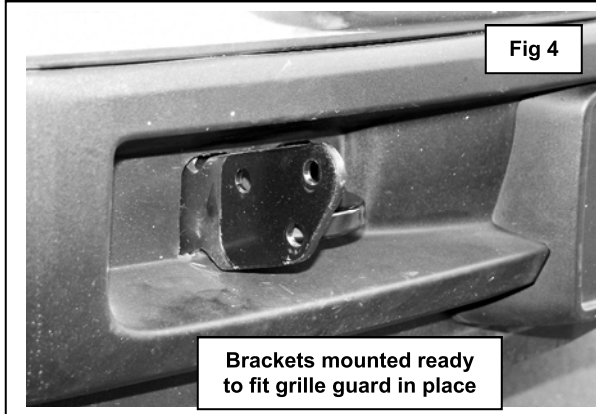
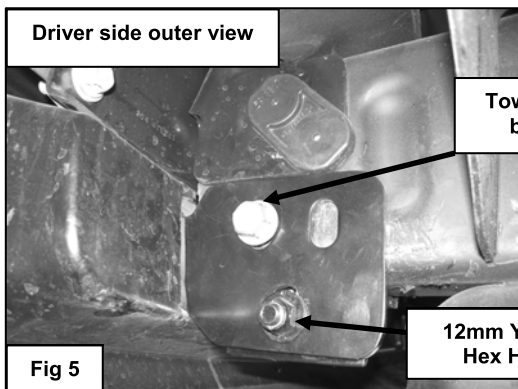


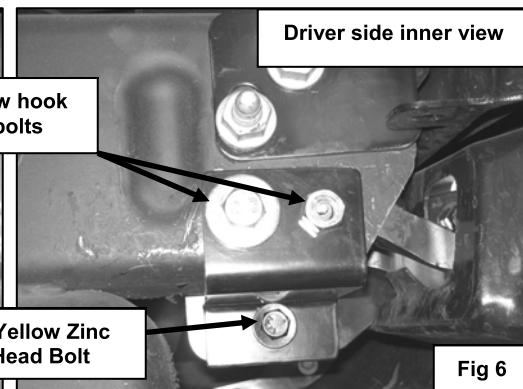
Fig 4

Brackets mounted ready to fit grille guard in place



Driver side outer view

Fig 5



Driver side inner view

Fig 6

Tow hook bolts

12mm Yellow Zinc Hex Head Bolt

