



INSTALLATION INSTRUCTIONS

ULTIMATE BULL BAR

APPLICATION:

2016-2017 Toyota Tacoma

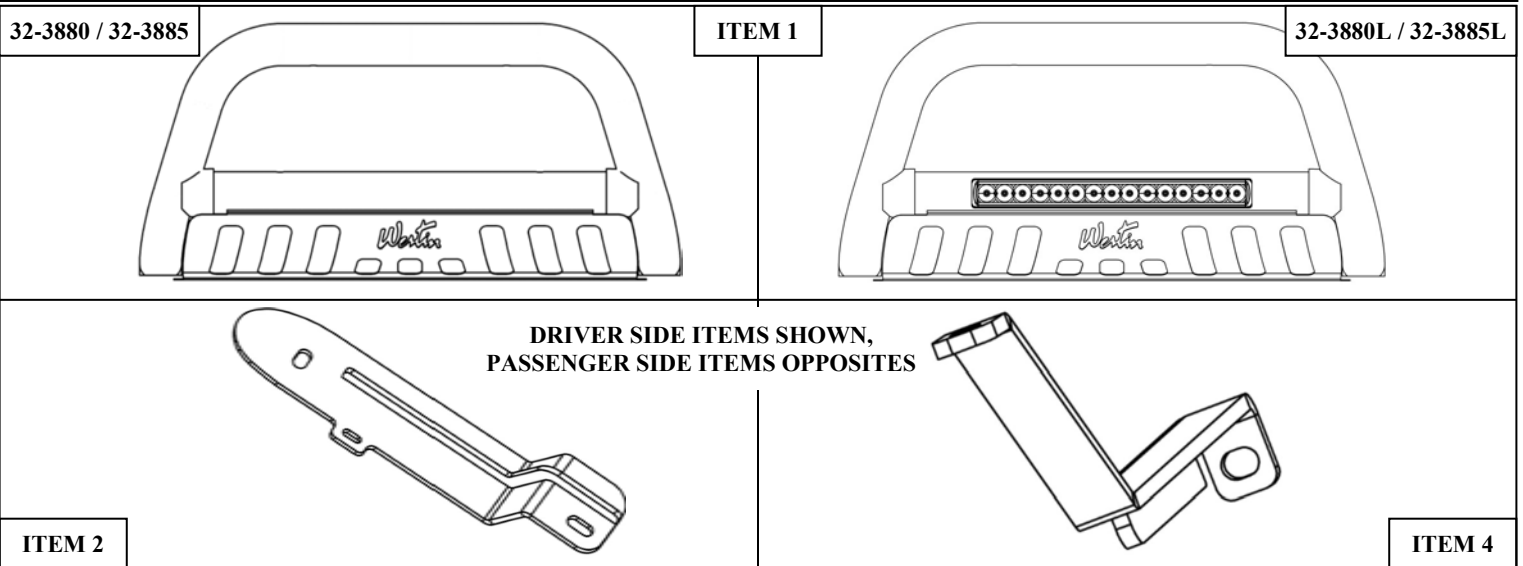
PART NUMBER:

32-3880, 32-3885, 32-3880L, 32-3885L

AUTOMOTIVE PRODUCTS

ITEM	QUANTITY	DESCRIPTION	TOOLS NEEDED
1	1	ULTIMATE BULL BAR	3/16 ALLEN KEY
2,3	2	MOUNT BRACKET, DRIVER(2) AND PASSENGER(3)	17MM WRENCH
4,5	2	STRAP, DRIVER(4) AND PASSENGER(5)	19MM WRENCH
6	2	M12 HEX HEAD CAP SCREW (YELLOW ZINC)	7/16 WRENCH
7	2	M12 FLAT WASHER (YELLOW ZINC)	17MM SOCKET
8	2	M12 SPLIT LOCK WASHER (YELLOW ZINC)	19MM SOCKET
9	2	1/4-20" BUTTON HEAD BOLT (YELLOW ZINC)	7/16 SOCKET
10	4	1/4" FLAT WASHER (YELLOW ZINC)	13MM SOCKET
11	2	1/4-20" HEX LOCK NUT (YELLOW ZINC)	RATCHET
12	2	M10 BOLT PLATE (YELLOW ZINC)	TORQUE WRENCH
13	2	M10 HEX NUT (YELLOW ZINC)	
14	2	M10 FLAT WASHER (YELLOW ZINC)	
15	2	M10 LOCK WASHER (YELLOW ZINC)	
16	2	3/8-16" HEX SOCKET BUTTON HEAD SCREW (BLACK ZINC)	
17	2	3/8 FLAT WASHER (BLACK ZINC)	
18	2	3/8 SPLIT LOCK WASHER (BLACK ZINC)	
19	1	LED WIRING HARNESS (09-12000-1)	

ANTI-SEIZE LUBRICANT MUST BE USED ON ALL STAINLESS STEEL FASTENERS TO PREVENT THREAD DAMAGE AND GALLING



**DRIVER SIDE ITEMS SHOWN,
PASSENGER SIDE ITEMS OPPOSITES**

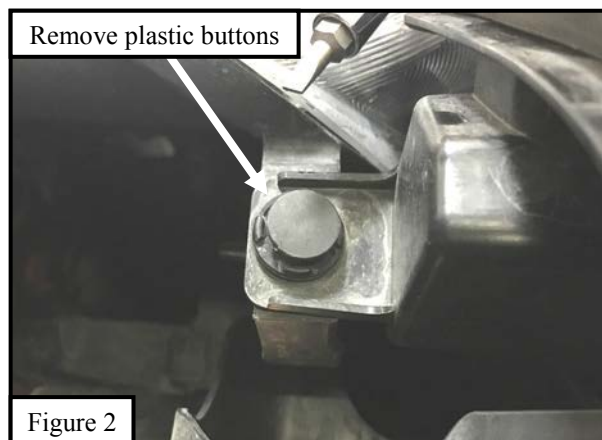
CARE INSTRUCTIONS

- REGULAR WAXING IS RECOMMENDED. DO NOT USE ANY TYPE OF POLISH OR WAX THAT MAY CONTAIN ABRASIVES.
- STAINLESS STEEL PRODUCTS CAN BE CLEANED WITH MILD SOAP AND WATER. STAINLESS STEEL POLISH SHOULD BE USED TO POLISH SMALL SCRATCHES.
- GLOSS BLACK FINISHES SHOULD BE CLEANED WITH MILD SOAP AND WATER.

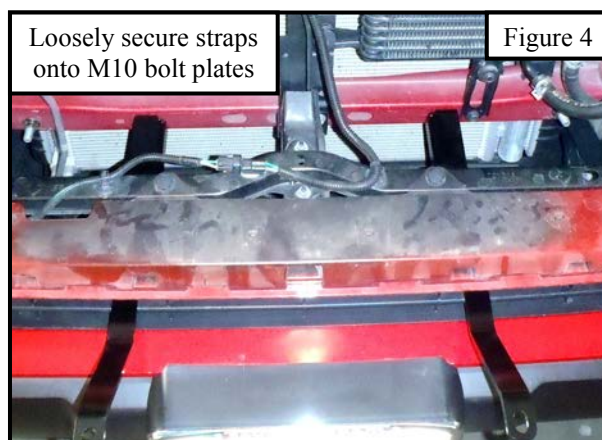
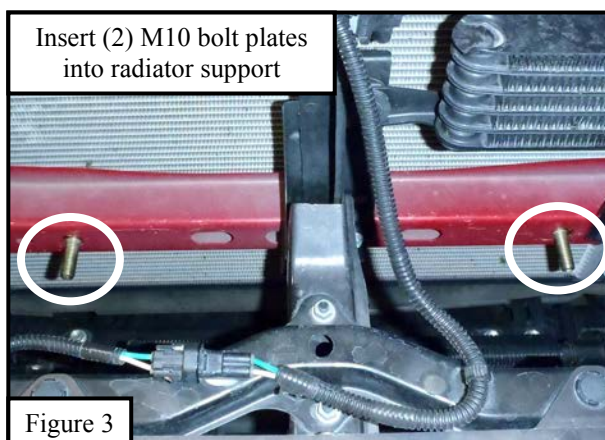


PROCEDURE

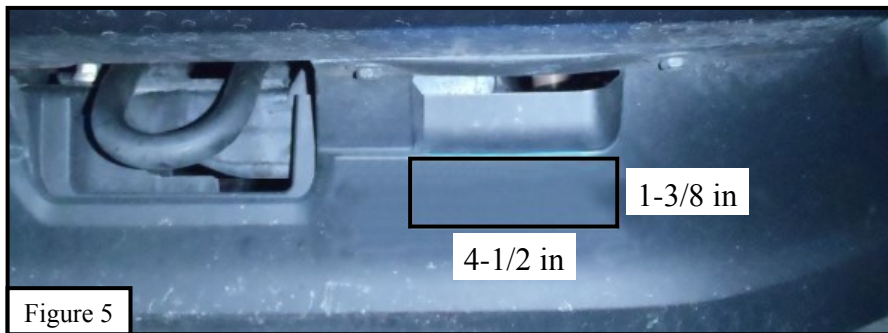
1. Remove contents from box, verify if all parts listed are present and free from damage.
Carefully read and understand all instructions before attempting installation.
Failure to identify damage before installation could lead to a rejection of any claim.
2. Under the hood of the vehicle remove screws and plastic push-pins to remove the grille. Once removed carefully pull off the grille. See **Figures 1 and 2.**



3. Insert (2) M10 bolt plates into the factory holes on the radiator support. See **Figure 3.**
4. Locate both straps (Items 4 & 5) and loosely secure to M10 bolt plates using the provided M10 hardware (Items 13-15). See **Figure 4.**



5. Cut a hole (4-1/2 in. x 1-3/8 in.) in both sides of the valance as shown **Figure 5.** And proceed to bracket installation.
6. Locate lower mounting locations for mount brackets (Items 2 & 3). See **Figure 6.**



7. Loosely secure the mount brackets onto the mount location using the factory hardware located at the mounting location. See **Figure 7**.
8. With assistance locate and lift the bull bar assembly and loosely secure onto the previously installed mount brackets using (2) M12 hex head cap screws, (2) M12 flat washers, and (2) M12 split lock washers. Using (2) 1/4-20" button head bolts, (4) 1/4" flat washers and (2) 1/4-20" hex lock nut to loosely secure the skid plate onto the mount brackets. See **Figure 8**. Using (2) 3/8-16" hex socket button head screws, (2) 3/8" flat washers and (2) 3/8" split lock washers to loosely secure the straps onto the bull bar assembly. See **Figure 9**.
9. Align and adjust bull bar assembly as necessary and then torque all fasteners: M10 to 25-30 ft-lbs , M12 50-55 ft-lbs, 1/4" to 5-7 ft-lbs, and 3/8" to 15-20 ft-lbs.
10. Reinstall the grille.
11. **For part number 32-3885L:** Refer to **Page 4** for wiring instructions. Loosen M8 hardware to adjust the LED light in bull bar or to remove it in order to replace it. See **Figure 10** for location of M8 hardware.

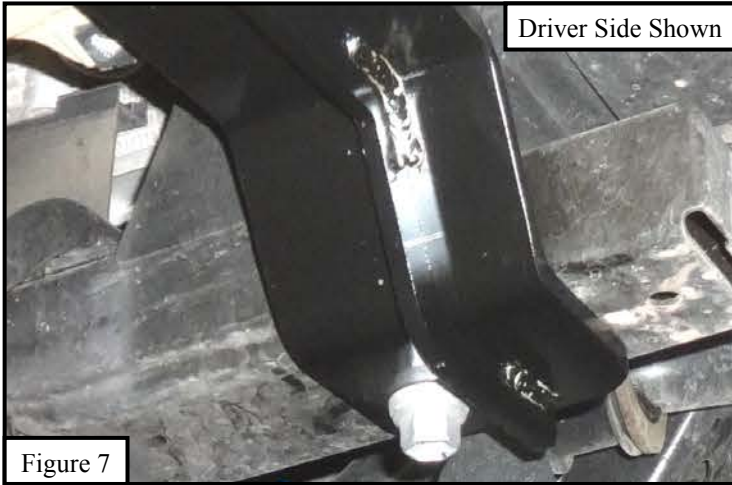


Figure 7

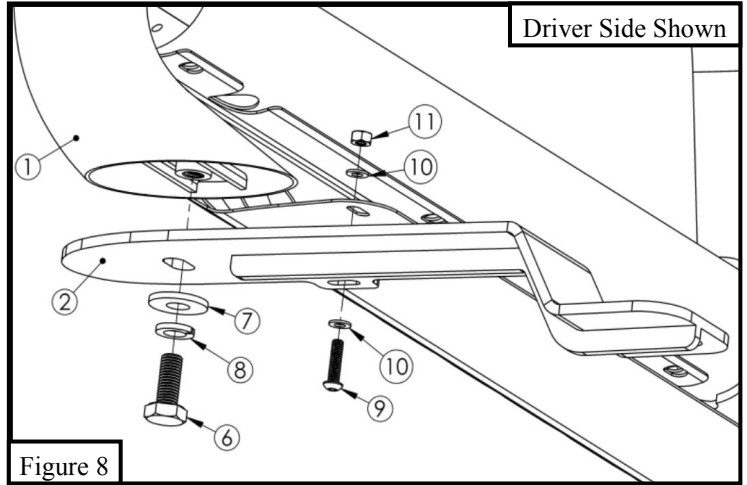


Figure 8



Figure 9

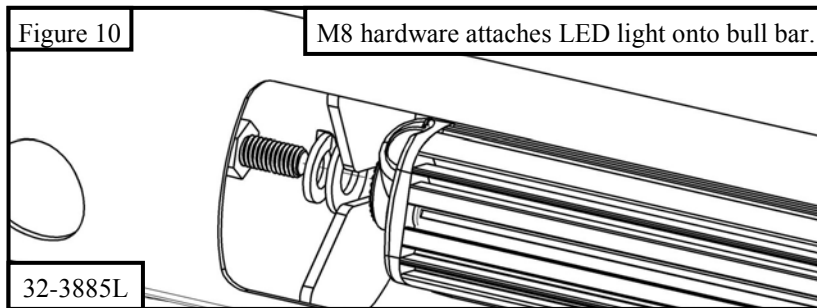


Figure 10

M8 hardware attaches LED light onto bull bar.

32-3885L

WIRING INSTRUCTIONS FOR 32-3885L:

WESTIN recommends using a professional for this installation.

CAUTION:

1. Disconnect ground connection from battery (-) to avoid accidental short circuits before attempting to connect electrical wires.
2. When running wires, avoid areas of excessive heat, vibration, pinch or rotation when securing harness to vehicle.
3. Always use a fused (+) positive supply source.
4. This light becomes hot under continuous use. Do not remove or touch the casting for at least 30 minutes after the lamp has been turned off.

Refer to Figure 11.

1. Locate wiring harness and mount the switch in a convenient location where it is easily accessible from the drivers seat.
Note: *The switch will need to be removed from the wiring harness so that the rest of the harness can be routed from the engine bay to the cabin.*
2. Route the wiring harness wire, specifically the fuse and relay, from the positive battery terminal along the firewalls existing wire routes. **Note:** *Tape as necessary to correct slack.*
3. Secure the relay by either drilling or using a pre-existing bolt along the chassis that is not connected to any other wire.
4. Run the switch harness through the firewall preferably through the pre-existing rubber plug that is used to run the OEM wiring harness from the engine bay to fuse box. **Note:** *Reconnect the switch to the wiring harness.*
5. Place the LED plug wire along the fender chassis where it will not get pinched and away from any moving parts (fan, pulleys etc.).
6. Run the attached wire from the LED Light Bar as previously mentioned away from any moving parts.
7. Connect both ends of wiring connectors from LED light bar and wiring harness.
8. Re-connect battery terminals, attach the Red (+) wire to battery positive, and the black (-) wire to ground. **Note:** *Add dielectric grease (not supplied).*
9. Turn on the switch to make sure if the lamp works. If not, please check carefully if the wiring installation is correct.

Figure 11

