



SIGNATURE OF QUALITY

# INSTRUCTIONS

APPLICATION: 2005-07 TOYOTA TACOMA

AUTOMOTIVE PRODUCTS, INC.

BULL BAR ASSEMBLY				
<b>32-1600</b> <b>32-1605</b>				
ITEM	QTY	CONTENTS	TOOLS	
1	1	BULL BAR ASSEMBLY	9/16" SOCKET 9/16" WRENCH 17MM SOCKET 14MM DEEP SOCKET RATCHET TORQUE WRENCH	
2,3	2	BRACKET, PASSENGER (2) AND DRIVER (3)		
4	2	PLASTIC PLUG		
5	4	RUBBER BUMPER		
6	4	3/8-16 X 1.25" HEX HEAD BOLT,		
7	8	3/8" SAE FLAT WASHER		
8	4	3/8" LOCK WASHER		
9	4	3/8-16 HEX NUT		
10	2	3/8-16 X 4.50" HEX HEAD BOLT		
11	2	3/8" SAE FLAT WASHER		
12	2	3/8" USS FLAT WASHER		
13	2	3/8" LOCK WASHER		
14	2	3/8-16 HEX NUT		
15	4	SPACER WASHER		

- STEP 1.** Remove the contents from box and check for damage. Verify all parts are present. Read instructions completely before beginning. **NOTE:** Westin advises the installer to use a thread lubricant on all of the stainless steel fasteners.
- STEP 2.** **NOTE:** It may be necessary to remove/relocate front license plate and license plate bracket. It is not required, but strongly recommended. If local/state laws requires a license plate, license plate relocation kit 32-0055 is available.
- STEP 3.** Determine passenger and driver brackets. From underneath vehicle, remove tow hooks. Tow hooks will not be reinstalled. Locate the two studs that hold the bumper support to the frame. Remove the nuts and install mount bracket onto the studs and replace factory nuts. Insert the 3/8-16 x 4.50" bolt through the frame and into the mount bracket. Secure with 3/8" yellow zinc fasteners as shown. **SEE FIGURE 2.**
- STEP 4.** Attach Bull Bar to mount brackets using 3/8" stainless steel fasteners. Level and adjust Bull Bar as desired and tighten all fasteners. Recommended torque values are 26 Ft. Lbs. for 3/8" yellow zinc fasteners, 17 Ft. Lbs. for 3/8" stainless steel fasteners and 32 Ft. Lbs. for 10mm bumper nuts.
- LIGHT INSTALLATION:** Insert threaded stud on base of the light through hole in cross tube. Using a ratchet, extension and socket for correct size of nut supplied, insert through large clearance hole in bottom of cross tube. Thread nut and washers on stud and tighten. **SEE FIGURE 1.** **NOTE:** A short socket, not a deep well works best to get the nut started.
- NOTE:** Fits most 6" round or rectangle lights. Some lights may require replacing included mount/isolator with rubber bumpers provided. Mounting stud of 1/2" or less required. Plug mount holes with caps provided if not installing lights.

### FINISH PROTECTION

Westin products have a high quality finish that must be cared for like any other exposed finish on the vehicle. Protect the finish with a non-abrasive automotive wax, (e.g. Pure Carnauba) on a regular basis. The use of any soap, polish or wax that contains an abrasive is detrimental, as the compounds scratch the finish and open it to corrosion.

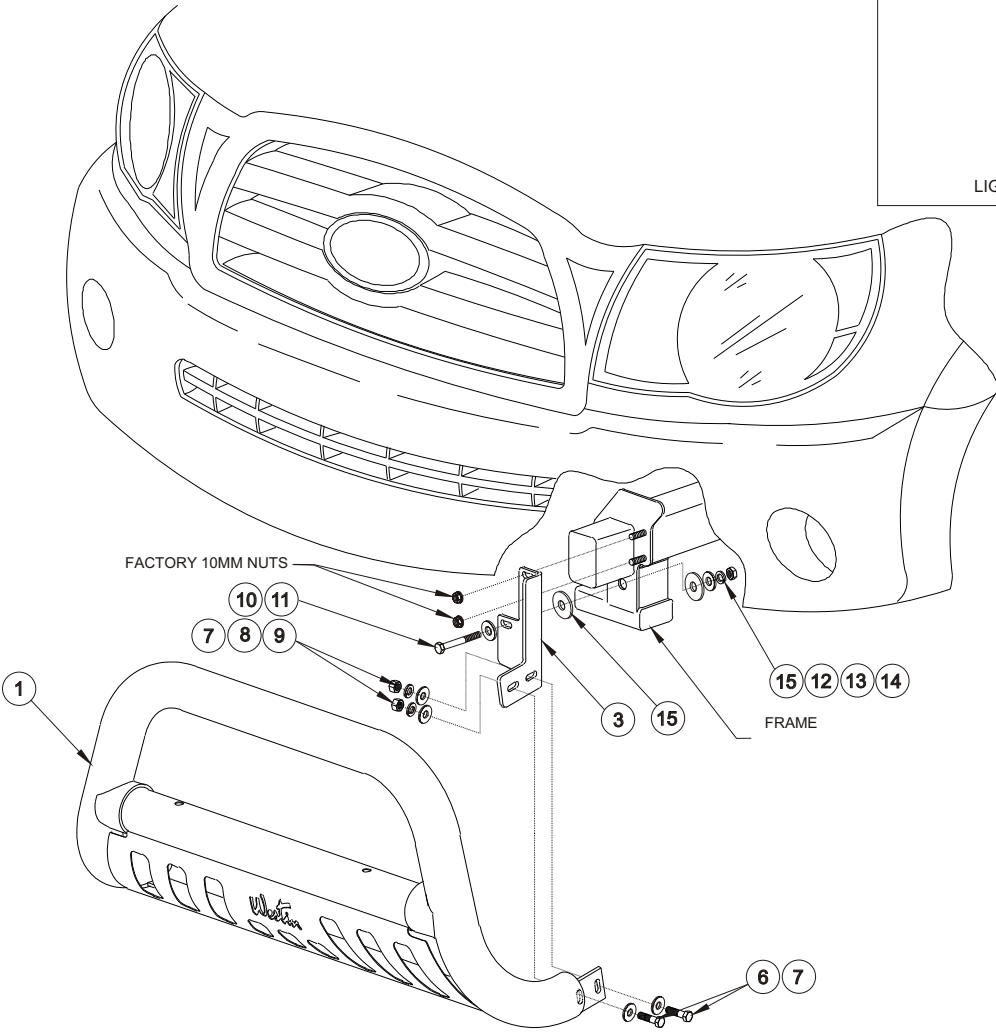
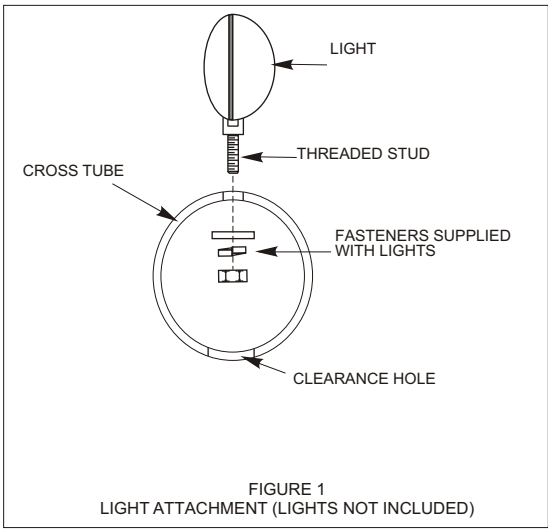


FIGURE 2 INSTALLATION VIEW OF DRIVER SIDE SHOWN, PASSENGER SIDE OPPOSITE