



AUTOMOTIVE PRODUCTS, INC.

# INSTRUCTIONS

APPLICATION: 1999-07 CLASSIC SILVERADO/SIERRA 2500LD  
 2000-06 SUBURBAN/YUKON XL 2500  
 2001-07 CLASSIC SILVERADO/SIERRA 1500HD/2500HD/3500  
 2001-06 AVALANCHE 2500 W/CLADDING; 2003-06 AVALANCHE 2500 W/O CLADDING

| BULL BAR ASSEMBLY  |     |                                       |   |  |  |
|--------------------|-----|---------------------------------------|---|--|--|
| 32-1240<br>32-1245 |     |                                       |   |  |  |
| ITEM               | QTY | CONTENTS                              | TOOLS   |  |  |
| 1                  | 1   | BULL BAR ASSEMBLY                     | 3/4" SOCKET<br>3/4" WRENCH<br>9/16" SOCKET<br>9/16" WRENCH<br>18MM SOCKET<br>RATCHET<br>TORQUE WRENCH |  |  |
| 2,3                | 2   | BRACKET, PASSENGER (2) AND DRIVER (3) |   |  |  |
| 4                  | 2   | SPACER PLATE                          |   |  |  |
| 5                  | 2   | PLASTIC PLUG                          |   |  |  |
| 6                  | 4   | RUBBER BUMPER                         |   |  |  |
| 7                  | 4   | 1/2-13 X 2.00" HEX HEAD BOLT          |   |  |  |
| 8                  | 4   | 1/2" FLAT WASHER                      |   |  |  |
| 9                  | 4   | 1/2" LOCK WASHER                      |   |  |  |
| 10                 | 4   | 3/8-16 X 1.25" HEX HEAD BOLT          |   |  |  |
| 11                 | 8   | 3/8" FLAT WASHER                      |   |  |  |
| 12                 | 4   | 3/8" LOCK WASHER                      |   |  |  |
| 13                 | 4   | 3/8-16 HEX NUT                        |   |  |  |

- STEP 1.** Remove the contents from box and check for damage. Verify all parts are present. Read instructions completely before beginning. **NOTE:** Westin advises the installer to use a thread lubricant on all of the stainless steel fasteners.
- STEP 2.** **NOTE:** It may be necessary to remove/relocate front license plate and license plate bracket. It is not required, but strongly recommended. If local/state laws requires a license plate, license plate relocation kit 32-0055 is available.
- STEP 3.** Determine passenger and driver brackets. From underneath vehicle, remove tow hooks. Slide brackets through end of frame and align holes in bottom of frame with the two nuts welded to the brackets. Attach brackets to frame rail with 1/2" fasteners as shown. **NOTE:** Use one spacer plate for large hole in bottom of frame as shown. Leave loose. **NOTE:** For vehicles without tow hooks a small opening may need to be cut out in the two inside indents of the airdam using a utility knife. **SEE FIGURE 3.**
- STEP 4.** Attach Bull Bar to mount brackets using 3/8" stainless steel fasteners. **NOTE:** 1999-02 models use front and middle holes on hoop mounting brackets. 2003-UP models use middle and rear holes. Level and adjust Safari Bar as desired and tighten all fasteners. Recommended torque values are 64 Ft. Lbs. for 1/2" fasteners 17 Ft. Lbs. for 3/8" stainless steel fasteners.

**LIGHT INSTALLATION:** Insert threaded stud on base of the light through hole in cross tube. Using a ratchet, extension and socket for correct size of nut supplied, insert through large clearance hole in bottom of cross tube. Thread nut and washers on stud and tighten. **SEE FIGURE 1.** **NOTE:** A short socket, not a deep well works best to get the nut started.

**NOTE:** Fits most 6" round or rectangle lights. Some lights may require replacing included mount/isolator with rubber bumpers provided. Mounting stud of 1/2" or less required. Plug mount holes with caps provided if not installing lights.

## FINISH PROTECTION

Westin products have a high quality finish that must be cared for like any other exposed finish on the vehicle. Protect the finish with a non-abrasive automotive wax, (e.g. Pure Carnauba) on a regular basis. The use of any soap, polish or wax that contains an abrasive is detrimental, as the compounds scratch the finish and open it to corrosion.

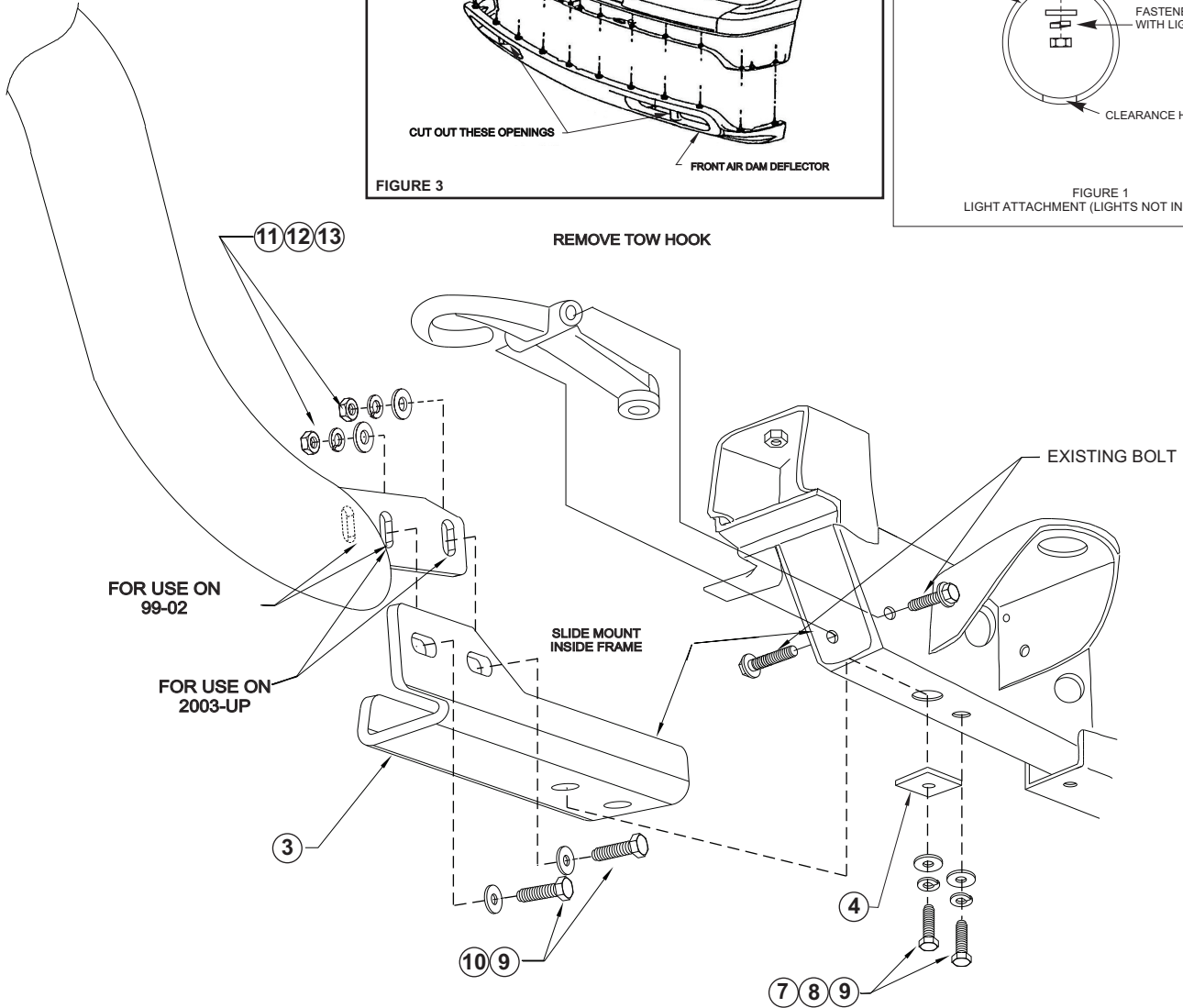
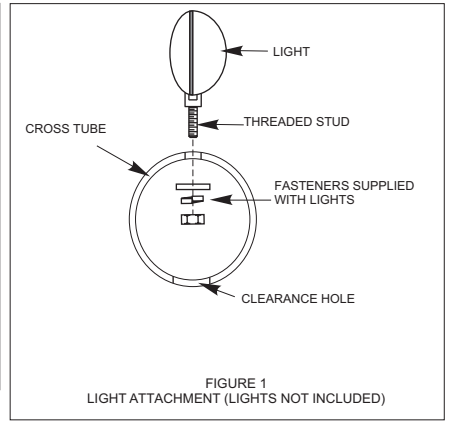
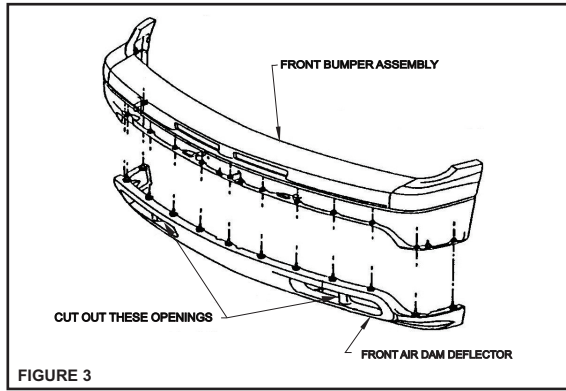


FIGURE 2 INSTALLATION VIEW OF DRIVER SIDE SHOWN, PASSENGER SIDE OPPOSITE