



SIGNATURE OF QUALITY

AUTOMOTIVE PRODUCTS, INC.

INSTRUCTIONS

APPLICATION: 1999-07 "CLASSIC" SILVERADO/SIERRA 1500 SERIES
 2002-06 TAHOE/YUKON/SUBURBAN/YUKON XL 1500 SERIES
 2001-06 AVALANCHE 1500 W/CLADDING; 2003-06 AVALANCHE 1500 W/O CLADDING

<p>BULL BAR ASSEMBLY</p> <p>32-1170 32-1175</p>				
---	--	--	--	--

ITEM	QTY	CONTENTS	TOOLS
1	1	BULL BAR ASSEMBLY	3/4" SOCKET 3/4" WRENCH 9/16" SOCKET 9/16" WRENCH 18MM SOCKET RATCHET TORQUE WRENCH
2,3	2	BRACKET, PASSENGER(2) AND DRIVER (3)	
4	2	BOLT PLATE	
5	2	PLASTIC PLUG	
6	4	RUBBER BUMPER	
7	6	1/2" FLAT WASHER	
8	4	1/2" LOCK WASHER	
9	2	1/2-13 HEX NUT	
10	4	3/8-16 X 1.25" HEX HEAD BOLT	
11	8	3/8" FLAT WASHER	
12	4	3/8" LOCK WASHER	
13	4	3/8-16 HEX NUT	
14	2	M12-1.75 X 40MM HEX HEAD BOLT	
15	2	M12-1.75 HEX NUT	

- STEP 1.** Remove the contents from box and check for damage. Verify all parts are present. Read instructions completely before beginning. **NOTE:** Westin advises the installer to use a thread lubricant on all of the stainless steel fasteners.
- STEP 2.** **NOTE:** It may be necessary to remove/relocate front license plate and license plate bracket. It is not required, but strongly recommended. If local/state laws requires a license plate, license plate relocation kit 32-0055 is available.
- STEP 3.** Determine passenger and driver brackets. From underneath vehicle, remove tow hooks. Insert bolt plates through large holes and M12-1.75 x 40mm hex head bolts through small holes in bottom frame locations. **SEE FIGURE 2.**
- STEP 4.** Attach brackets to frame using 1/2" fasteners as shown. Leave loose. **NOTE:** For vehicles without tow hooks a small opening may need to be cut out in the two inside indents of the airdam using a utility knife. **SEE FIGURE 3.**
- STEP 5.** Attach Bull Bar to brackets using 3/8" fasteners as shown. **NOTE:** 1999-02 models use front and middle holes on the hoop mounting brackets. 2003-UP models use middle and rear holes. **SEE FIGURE 2.**
- STEP 6.** Level and adjust Bull Bar as desired and tighten all fasteners. Recommended torque values are 64 Ft. Lbs. for 1/2" yellow zinc fasteners and 17 Ft. Lbs. for 3/8" stainless steel fasteners.
- LIGHT INSTALLATION:** Insert threaded stud on base of the light through hole in cross tube. Using a ratchet, extension and socket for correct size of nut supplied, insert through large clearance hole in bottom of cross tube. Thread nut and washers on stud and tighten. **SEE FIGURE 1. NOTE:** A short socket, not a deep well works best to get the nut started.
- NOTE:** Fits most 6" round or rectangle lights. Some lights may require replacing included mount/isolator with rubber bumpers provided. Mounting stud of 1/2" or less required. Plug mount holes with caps provided if not installing lights.

FINISH PROTECTION

Westin products have a high quality finish that must be cared for like any other exposed finish on the vehicle. Protect the finish with a non-abrasive automotive wax, (e.g. Pure Carnauba) on a regular basis. The use of any soap, polish or wax that contains an abrasive is detrimental, as the compounds scratch the finish and open it to corrosion.

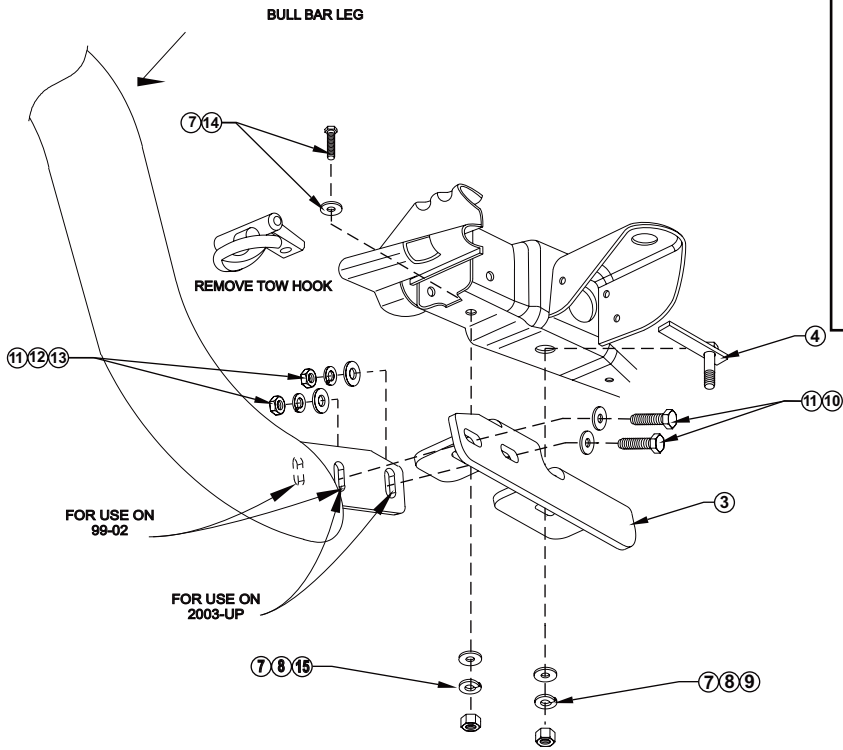


FIGURE 2 DRIVER SIDE INSTALLATION SHOWN, PASSENGER SIDE OPPOSITE

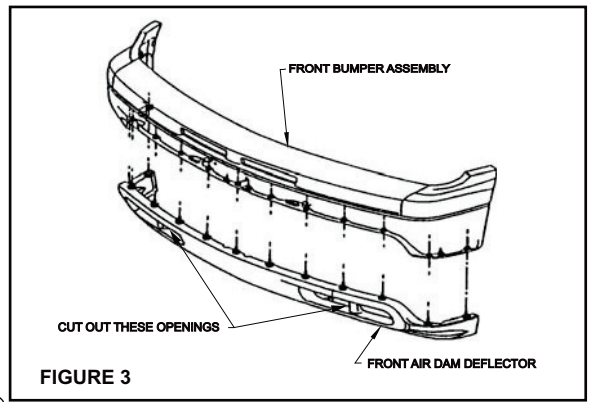


FIGURE 3

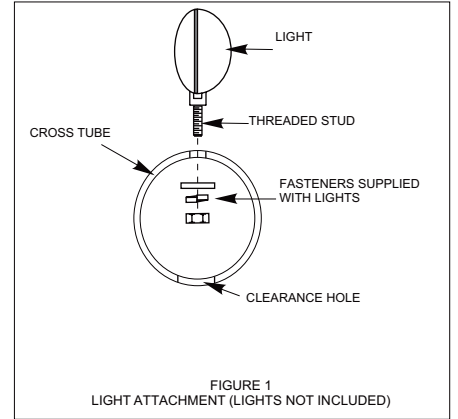


FIGURE 1 LIGHT ATTACHMENT (LIGHTS NOT INCLUDED)