



SIGNATURE OF QUALITY

# INSTRUCTIONS

APPLICATION: 2003-07 MITSUBISHI ENDEAVOR

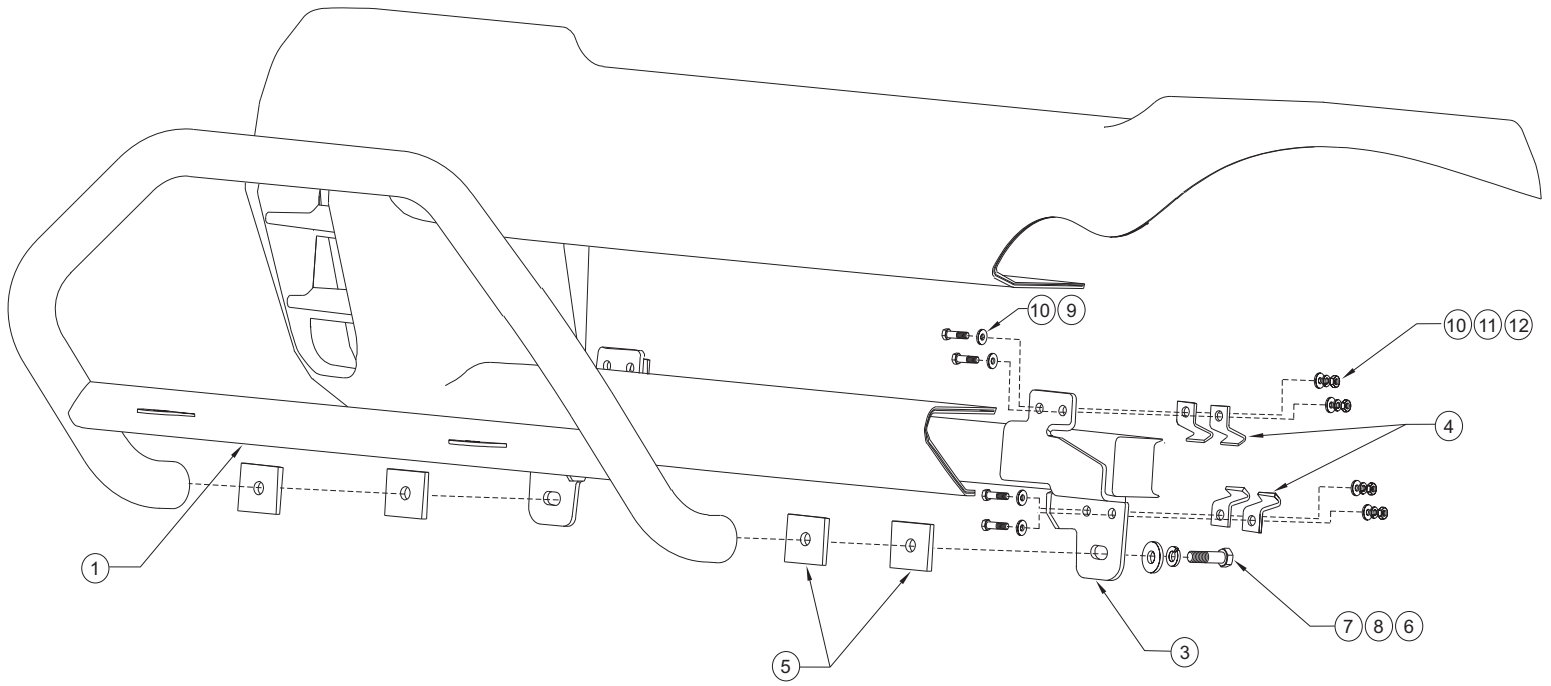
AUTOMOTIVE PRODUCTS, INC.

SAFARI BAR ASSEMBLY				
30-0010 30-0015				
MOUNT KIT				
30-1355				
ITEM	QTY	CONTENTS	TOOLS	
1	1	SAFARI BAR ASSEMBLY (PURCHASED SEPARATELY)	3/4" SOCKET 3/4" WRENCH 9/16" SOCKET 9/16" WRENCH RATCHET SMALL PHILLIPS SCREWDRIVER TORQUE WRENCH UTILITY KNIFE	
2,3	2	BRACKET, PASSENGER (2) AND DRIVER (3)		
4	8	MOUNT CLAMP		
5	4	SPACER PLATE		
6	2	1/2-13 X 2.00" HEX HEAD BOLT		
7	2	1/2" FLAT WASHER		
8	2	1/2" LOCK WASHER		
9	8	3/8-16 X 1.25" HEX HEAD BOLT		
10	16	3/8" FLAT WASHER		
11	8	3/8" LOCK WASHER		
12	8	3/8-16 HEX NUT		

- STEP 1. Remove the contents from box and check for damage. Verify all parts are present. Read instructions completely before beginning.
- STEP 2. Carefully remove lower splash shield by removing 12 plastic rivets.
- STEP 3. Determine passenger and driver brackets. Attach brackets to bumper support frame using bottom clamps and 3/8" fasteners as shown. **SEE FIGURE 1. NOTE:** Brackets should be 32 1/2" from Safari Bar mount slot and centered on vehicle. Tighten top and bottom bolts at the same time to keep Safari Bar mount surface perpendicular to vehicle frame and ground. Trimming of the lower bumper fascia may be necessary.
- STEP 4. Attach Safari Bar to mount brackets using 1/2" fasteners. Level and adjust Safari Bar as desired and tighten all fasteners. Recommended torque values are 64 Ft. Lbs. for 1/2" fasteners and 26 Ft. Lbs. for 3/8" fasteners. NOTE: It may be necessary to relocate license plate.
- STEP 5. Position splash shield up to vehicle and cut as necessary around mount brackets. Reinstall splash shield

#### FINISH PROTECTION

Westin products have a high quality finish that must be cared for like any other exposed finish on the vehicle. Protect the finish with a non-abrasive automotive wax, (e.g. Pure Carnauba) on a regular basis. The use of any soap, polish or wax that contains an abrasive is detrimental, as the compounds scratch the finish and open it to corrosion.



**FIGURE 1** INSTALLATION VIEW OF DRIVER SIDE SHOWN, PASSENGER SIDE OPPOSITE