

# INSTALLATION INSTRUCTIONS

## PLATINUM 4 OVAL NERF STEP BARS

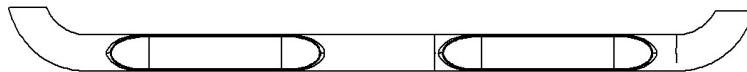


**APPLICATION:**  
2020 Jeep Gladiator  
**PART NUMBER:**  
21-4165

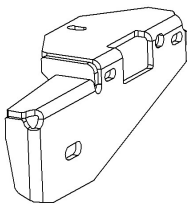
CONTENT			
ITEM	QUANTITY	DESCRIPTION	TOOLS NEEDED
1, 2	2	STEP BAR ASSEMBLY (1 DRIVER SIDE, 1 PASSENGER SIDE)	13 MM SOCKET
3	1	FRONT MOUNTING BRACKET (DRIVER SIDE)	13 MM WRENCH
4	1	FRONT MOUNTING BRACKET (PASSENGER SIDE)	3/4" SOCKET
5	2	CENTER MOUNTING BRACKETS	RATCHET
6	1	REAR MOUNTING BRACKET (DRIVER SIDE)	TORQUE WRENCH
7	1	REAR MOUNTING BRACKET (PASSENGER SIDE)	ALLEN WRENCH
8	4	1/2" HEX HEAD CAP SCREW (YELLOW ZINC)	
9	4	1/2" FLAT WASHER (YELLOW ZINC)	
10	4	1/2" SPLIT LOCK WASHER (YELLOW ZINC)	
11	8	M8 HEX HEAD CAP SCREW (BLACK ZINC)	
12	8	M8 SERRATED FLANGE NUT (BLACK ZINC)	
13	8	M8 BUTTON HEAD SCREW (BLACK ZINC)	
14	8	M8 SPLIT LOCK WASHER (BLACK ZINC)	
15	24	M8 FLAT WASHER (BLACK ZINC)	

**ANTI-SEIZE LUBRICANT MUST BE USED ON ALL STAINLESS STEEL FASTENERS TO PREVENT THREAD DAMAGE AND GALLING**

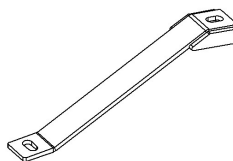
ITEM 1



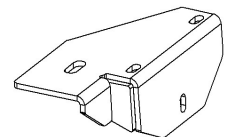
ITEM 3



ITEM 5



ITEM 7

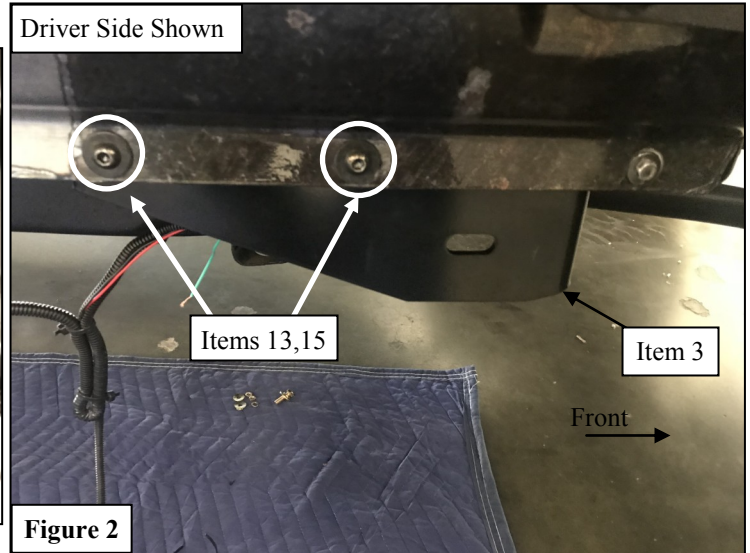
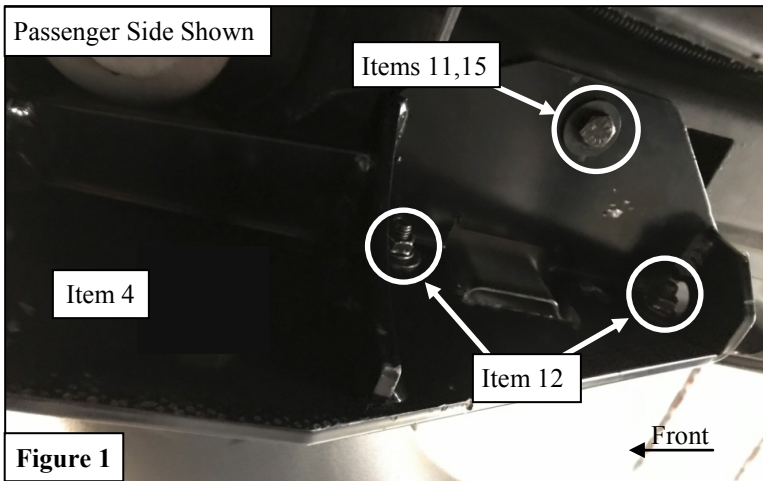


*Note: Items shown are for the drivers side. Passenger side items are opposites to the images shown.*

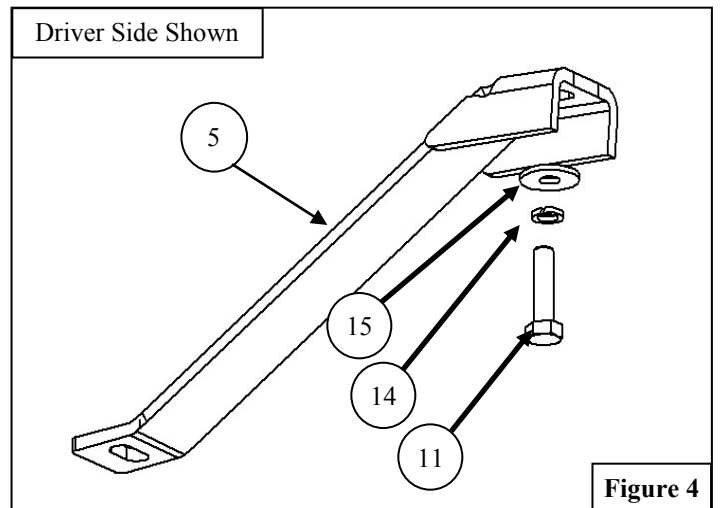
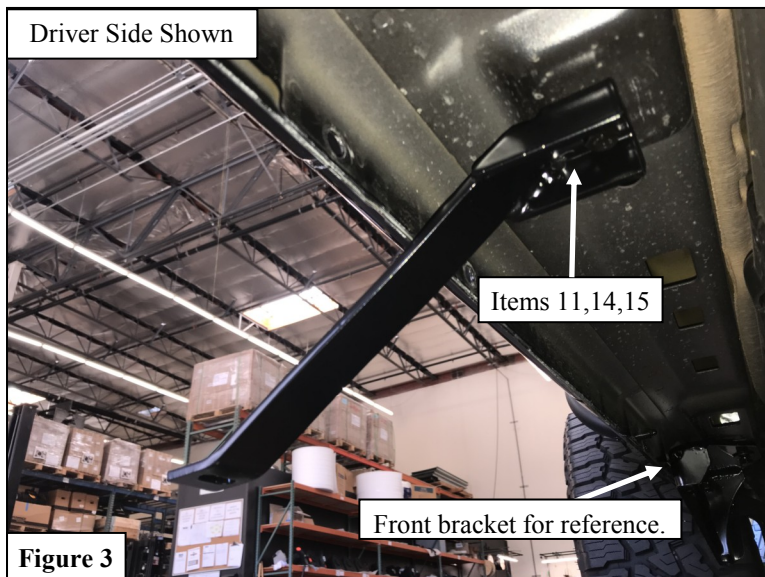


## PROCEDURE

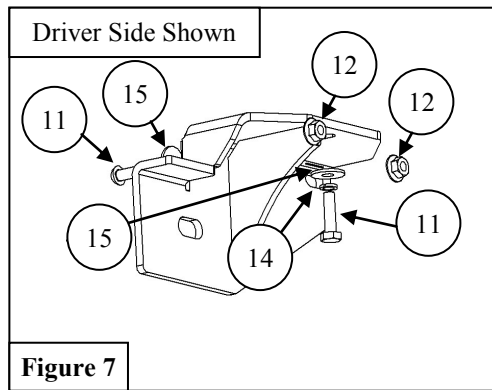
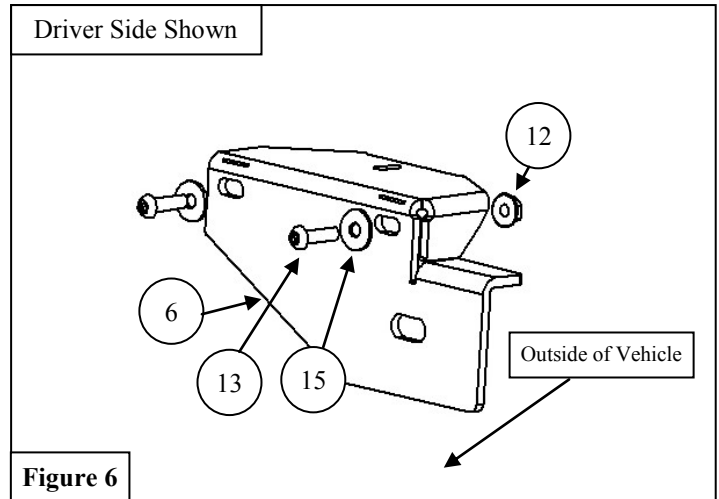
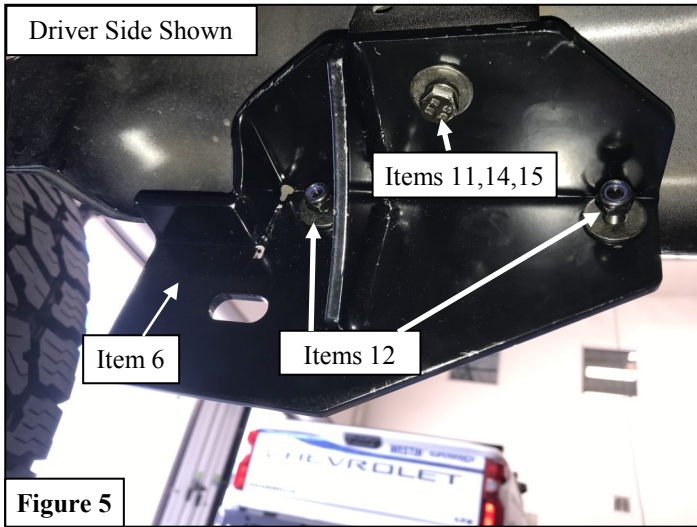
1. Remove contents from box, verify if all parts listed are present and free from damage. Carefully read and understand all instructions before attempting installation.  
**Failure to identify damage before installation could lead to a rejection of any claim.**
2. Loosely attach the Front Mounting Bracket (3) to the vehicle's pinch weld and frame using the supplied M8 Hardware. See **Figures 1 & 2**. *Note: Be sure to install the nuts on the bracket side of the pinch weld.*



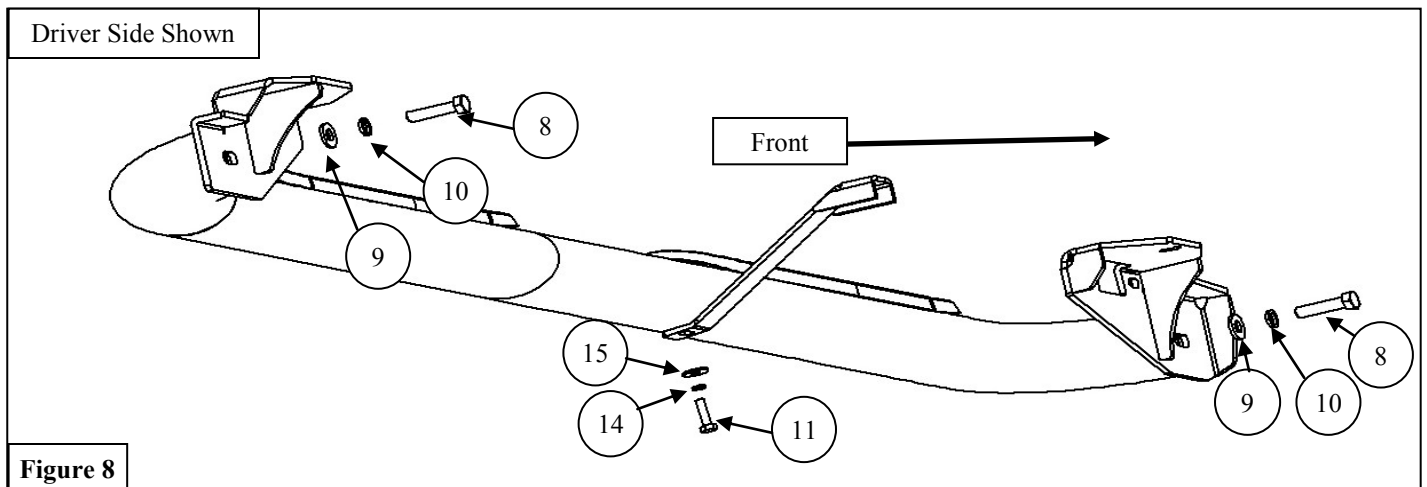
4. Loosely attach the Center Mounting Bracket (5) to the vehicle's pinch weld and frame using the supplied M8 Hardware. See **Figures 3 & 4**.
5. Repeat for passenger side.



- Loosely attach the Rear Mounting Bracket (7) to the vehicle's pinch weld and frame using the supplied M8 Hardware. See **Figures 5, 6, & 7.** *Note: Be sure to install the nuts on the bracket side of the pinch weld.*
- Repeat for passenger side.



- Align and adjust the step bars as needed. Tighten and torque all 1/2" hardware to 50 ft-lbs, and all M8 hardware to 18 ft-lbs. See **Figure 8** for exploded view of hardware.



## COMPLETE INSTALLATION



### CARE INSTRUCTIONS

- REGULAR WAXING IS RECOMMENDED. DO NOT USE ANY TYPE OF POLISH OR WAX THAT MAY CONTAIN ABRASIVES.
- STAINLESS STEEL PRODUCTS CAN BE CLEANED WITH MILD SOAP AND WATER. STAINLESS STEEL POLISH SHOULD BE USED TO POLISH SMALL SCRATCHES.
- GLOSS BLACK FINISHES SHOULD BE CLEANED WITH MILD SOAP AND WATER.

**WESTIN**





## WARNING



Failure to follow these instructions could lead to death, personal injury, and / or property damage.

Failure to follow these instructions could lead to death, personal injury, and / or property damage.

### FASTENERS:

All Westin supplied fasteners must be utilized and installed in accordance with the installation instructions and apply torque to the specifications as defined. **DOUBLE CHECK ALL FASTENERS BEFORE INITIAL USE, AND PERIODICALLY IN THE FUTURE TO ENSURE PROPER FUNCTION AND SAFETY.**

### DRILLING:

Most Westin products do not require drilling for installation. If drilling is defined as required, use caution when drilling a vehicle. **FAILURE TO REVIEW AN AREA TO BE DRILLED MAY RESULT IN PERSONAL INJURY AND/OR INJURY TO OTHERS AS WELL AS VEHICLE DAMAGE.**

### EYE PROTECTION:

**ALWAYS WEAR SAFETY GLASSES OR GOGGLES DURING THE INSTALLATION PROCESS TO AVOID PERSONAL INJURY.**

### MAXIMUM TOWING/CARRYING CAPACITY: (if applicable)

The Westin Receiver Hitches will have a visible tow rating label affixed directly on the product. User should never exceed the vehicle manufacturers maximum tow and weight rating regardless of the capacity of the hitch. **FAILURE TO FOLLOW THESE GUIDELINES WILL VOID THE WESTIN WARRANTY AND MAY RESULT IN PERSONAL INJURY AND/OR INJURY TO OTHERS AS WELL AS VEHICLE DAMAGE.**

### FOR CALIFORNIA RESIDENTS ONLY-PROP 65 WARNING:

Some products may contain chemicals such as DEHP, which can cause cancer, birth defects or other reproductive harm.



Learn more about running boards and step bars we have.