



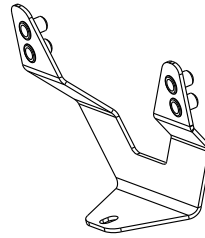
SIGNATURE OF QUALITY

INSTRUCTIONS

APPLICATION: ALL BULL BAR ASSEMBLIES

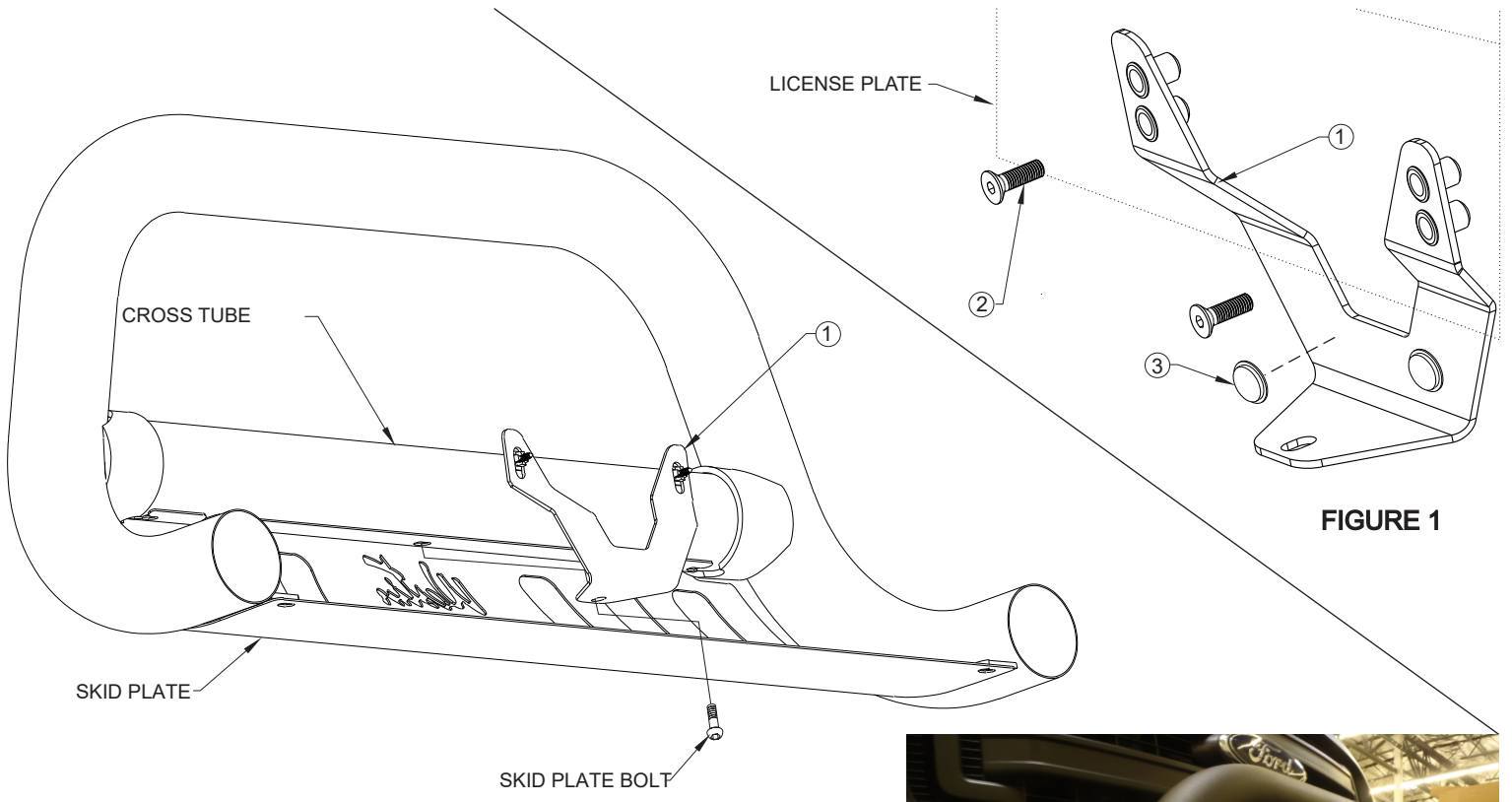
AUTOMOTIVE PRODUCTS, INC.

LICENSE PLATE ASSEMBLY
32-0055



ITEM	QTY	CONTENTS	TOOLS
1	1	BRACKET	5/32" HEX WRENCH FLAT TIP SCREWDRIVER
2	2	M6 X 20MM SOCKET COUNTERSUNK SCREW	
3	2	RUBBER BUMPERS	

- STEP 1. Remove the contents from box and check for damage. Verify all parts are present. Read instructions completely before beginning.
- STEP 2. Place rubber bumpers on bracket face to keep bracket from contacting the bull bar. SEE FIGURE 1.
- STEP 3. Remove center skid plate bolt from bull bar assembly and install license plate bracket against cross tube and on top of skid plate. Reinstall center skid plate bolt through license plate bracket and tighten. SEE FIGURE 2.
- STEP 4. Attach license plate to bracket as shown. Use either top or bottom threaded insert to ensure best fit and License plate visibility. SEE FIGURE 1.
- STEP 5. Attach Bull Bar to vehicle according to the instructions supplied with the Bull Bar Assembly.



Check out the collection of grille guards and bull bars we offer.