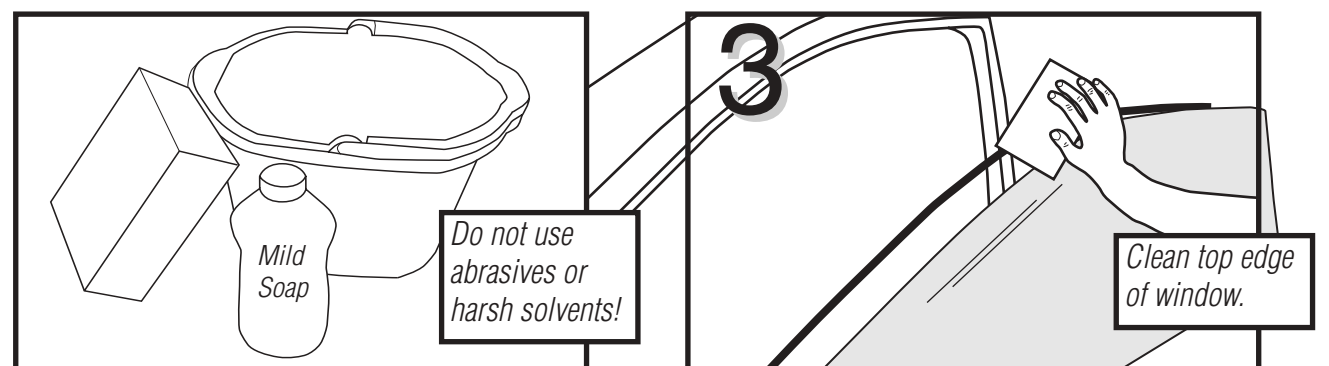
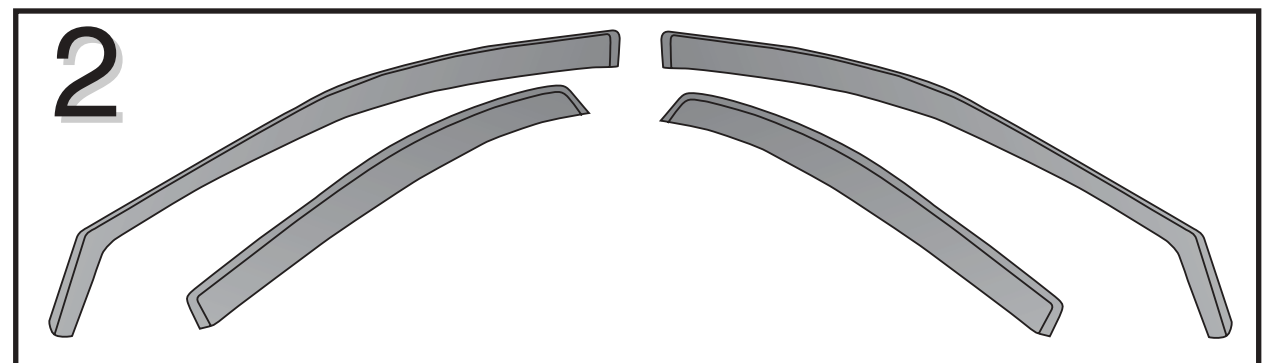
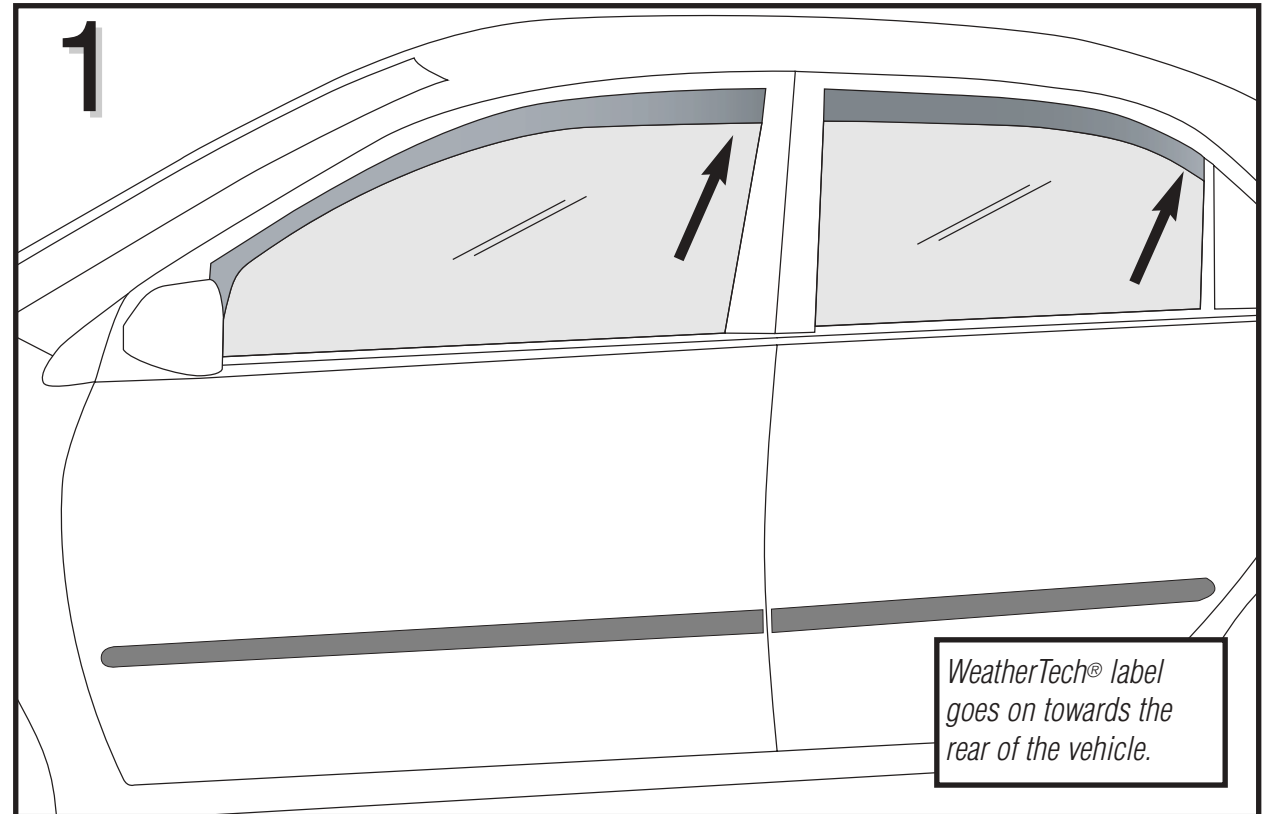


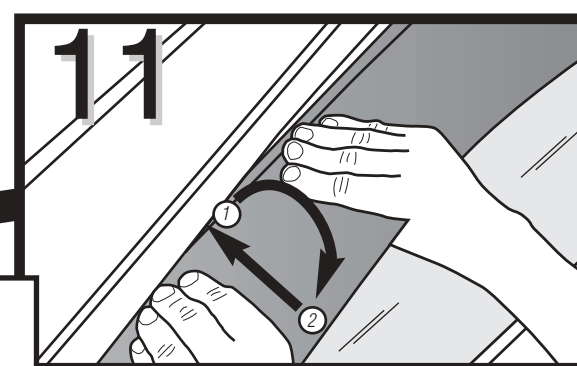
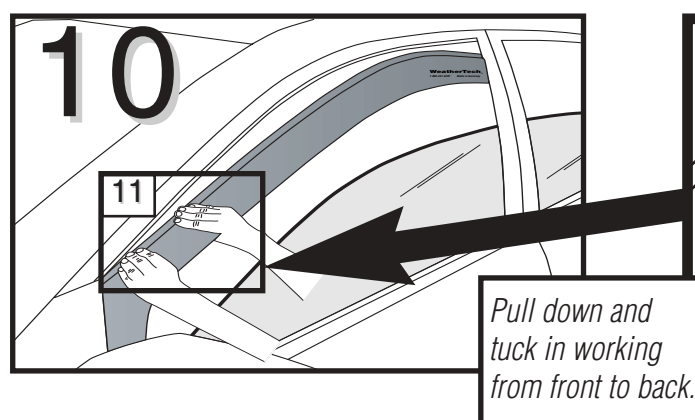
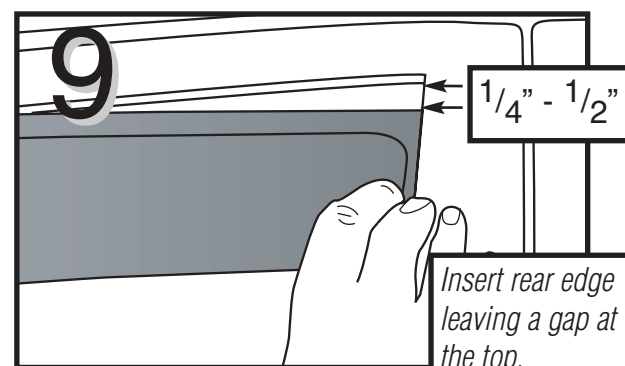
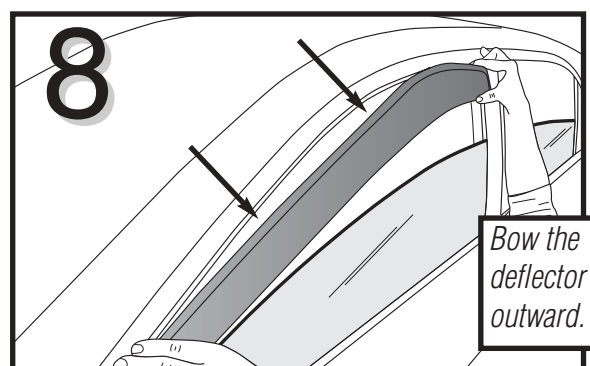
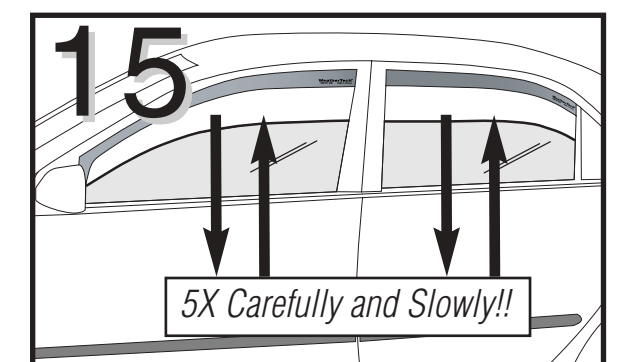
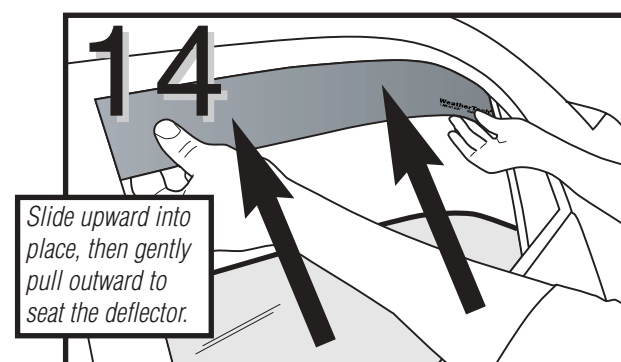
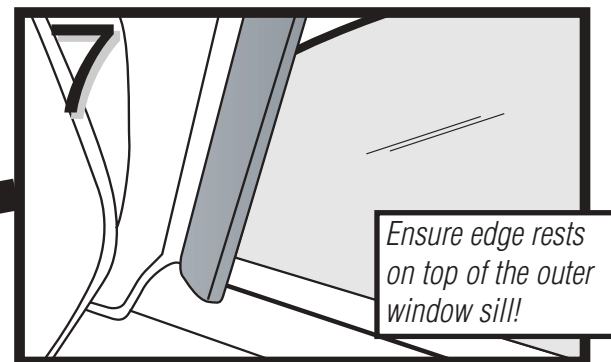
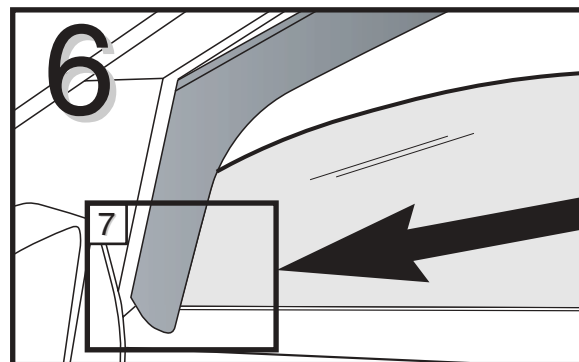
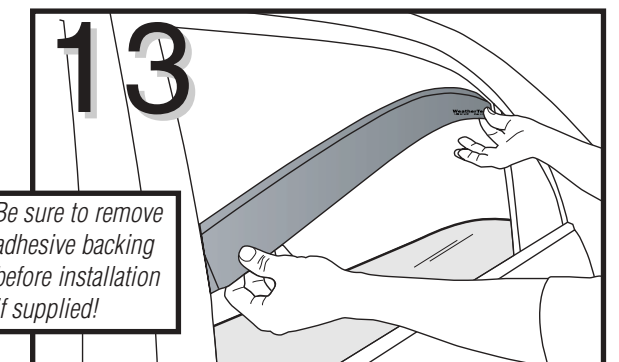
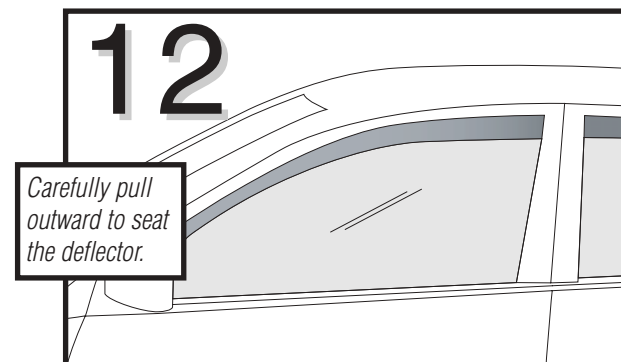
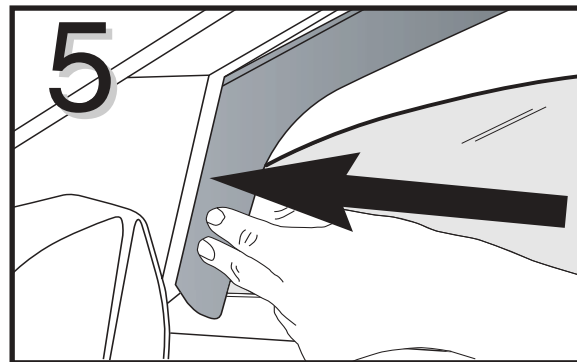
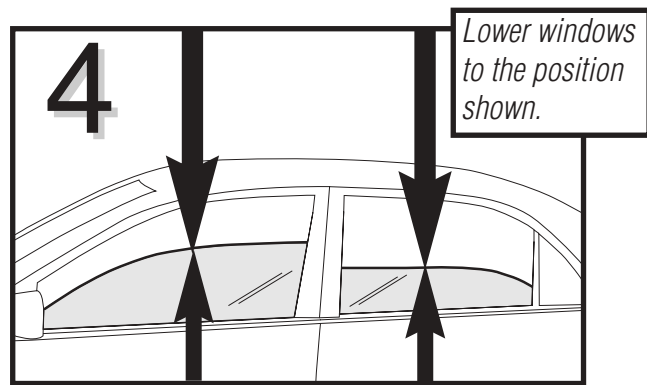
## Installation Instructions

### Side Window Deflectors

**Warning**

Accessories which are not properly fitted can be danerous. Read the instructions carefully before installation, and comply with the instructions at all times. If in doubt, contact MacNeil Automotive Products Ltd.





**Tips for proper fit**

- \*Ensure that the only part of the deflector inserted into the window channel is the thin, machined flange along the edge of the deflector.
- \*The bottom edge of the front deflector must be resting on the door's outer weatherstrip molding. See inset of figure 5.
- \*Check that the thin, machined flange of each deflector is fully and evenly inserted into the window channel. The deflector flange is designed to rest in the main window channel between the window glass and the rubber seal.
- \*For windows with automatic raising feature: Roll the window all the way up without activating the automatic feature. Leave the window all the way up for at least 12 hours. The automatic raising feature should now function properly.
- \*If windows are equipped with a safety feature that automatically opens the window if any resistance is met, simply sandwich the window with your hands and push upward while raising the window. This should allow the window to close fully. Leaving the window in the closed position for 12 hours will ensure proper functionality.