

WeatherTech®

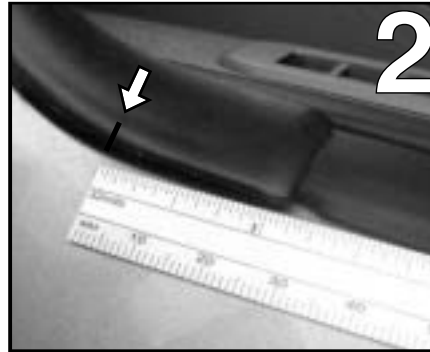
Side Window Deflectors

Installation Instructions

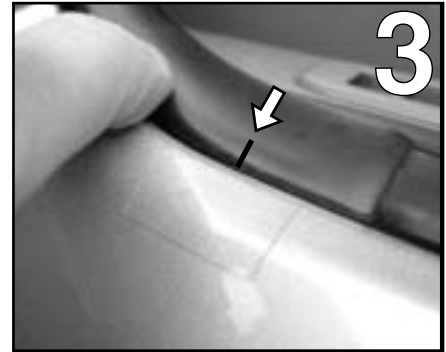
For proper support of the Side Window Deflectors, window deflector clips must be installed. If the deflector clip is not inserted properly, the Side Window Deflector may fit loosely and damage to the deflector or vehicle may result. Installation is recommended at temperatures above 50° Fahrenheit. For Side Window Deflector Part Number 70297



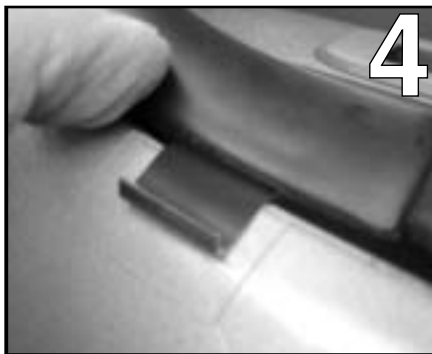
1
Open drivers window completely. Note curved plastic portion at forward base of window opening.



2
Measure a point 1 1/8" from the point where the curved plastic begins, and mark with a felt tip pen.



3
Install the 3M® paint protection film on the doorskin, adjacent to the curved plastic and center the film at the 1 1/8" mark.



4
Push inward on the curved plastic portion to expose a gap large enough to place curved end of clip onto door skin (approx. 1/8" gap).



5
Allow the curved plastic portion to return to its original location, covering the retention clip.



6
Begin deflector installation by inserting end of deflector into the window opening at the rear of the door. (upper right hand corner)



7
Continue inserting the deflector into the window channel from rear to front, working toward tip, or leading edge of deflector.



8
Complete installation by lifting the end of deflector onto retention clip.



9
Push forward on deflector until it is fully inserted into the window channel. Slowly and carefully close the window for the first time.