

# WeatherTech®

## Side Window Deflectors

*Front with Weather Strip Clips*

### Installation Instructions

---

#### Contents



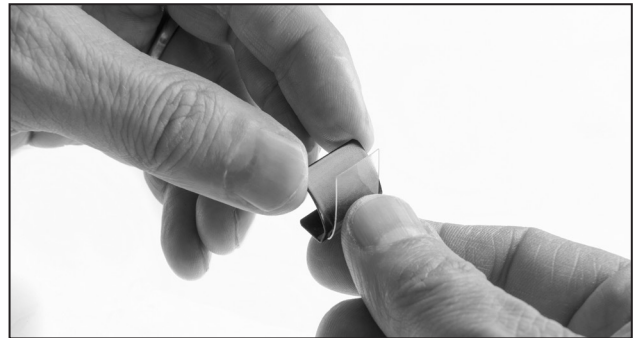
(2) Side Window Deflectors, (2) Weather Strip Clips, (2) pieces of clear tape. If there is a WeatherTech® label, it should be positioned toward the rear of the vehicle.

**⚠ WARNING ⚠**

Accessories which are not properly fitted can be dangerous. Read the instructions carefully before installation, and comply with the instructions at all times. If in doubt, contact WeatherTech®.



**1** Make sure that windows are clean and dry. Then, lower halfway.



**2** Place one strip of the provided clear tape centered onto the top of the weather strip clip.



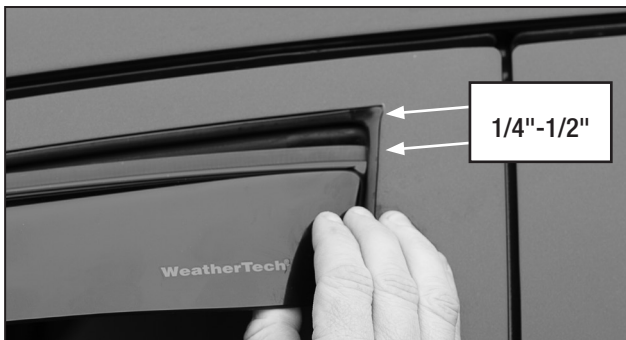
**3** Place the weather strip clip onto the window gasket material: position as far forward as possible.



**4** Lower the front of the deflector onto the weather strip clip as shown.



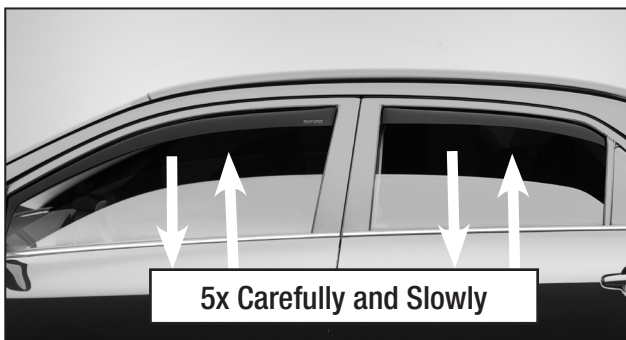
**5** With the deflector now resting on the weather strip clip, slide forward into the channel. Ensure edge rests on top of the weatherstrip clip.



**7** Insert the rear edge leaving a gap at the top.



**9** Carefully pull outward on the deflector.



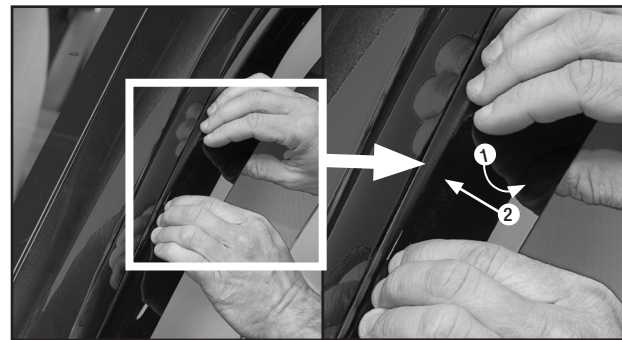
**11** Roll all windows up in small increments. Make sure to do this CAREFULLY and SLOWLY!! Repeat steps 1-11 on the passenger side.

**Congratulations!**

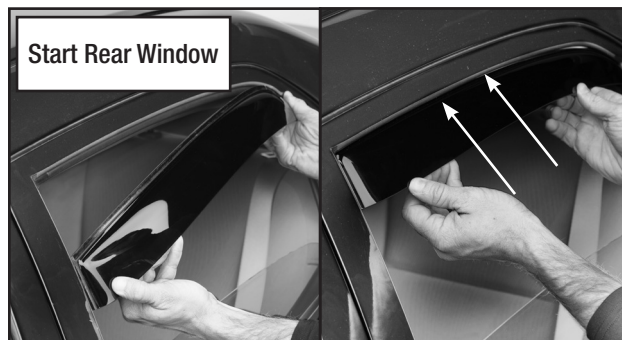
**Your new WeatherTech® Side Window Deflectors have been installed!**



**6** Bow the deflector outward.



**8** Pull down and tuck in working from front to back.



**10** Be sure to remove adhesive backing before installation (if supplied). Slide upward into place, then gently pull outward to set the deflector.

### Installation Tips:

1. When installed correctly, the bottom edge of the front deflector must rest on the door's outer weather stripping and only the thin flange is in the channel between the glass and inner seal.
2. Slowly raise the window up without activating the auto-up. If unable to fully close, have someone press the window between their hands upwards. Simultaneously raise the window up in small increments until fully closed.
3. If safety features cause the window to go down, reset the window by:
  - a. Roll the window down, hold the down button for 5 seconds.
  - b. Raise the window without activating the auto-up feature. Hold the up button for 3 seconds.
4. Leave windows closed fully for 12 hours. Deflector may take longer to acclimate below 60° F / 16° C.

Looking for dependable rain guards & wind deflectors?  
Rely on Weathertech for quality and long-lasting products.