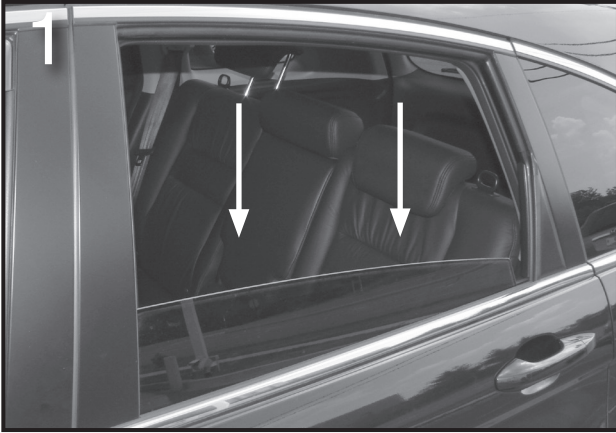


WeatherTech®

Side Window Deflectors

Installation Instructions



Start with a clean, dry vehicle. Roll down the windows.



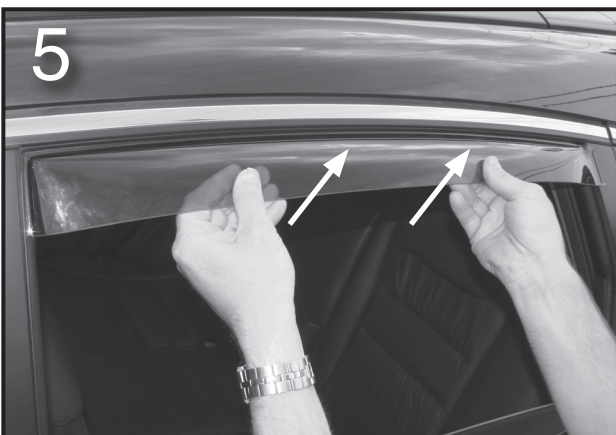
Remove the tape backing from the front and upper flanges. Avoid touching the adhesive.



Insert one of the clips between the rubber gasket and the black plastic that forms the rear edge of the window.



Put the rear edge of the deflector into the clip first. Then insert the front flange into the window channel. Push the deflector upwards until the top flange is fully inserted into the window channel.



Gently tug the part outward to ensure that the deflector is seated properly. Slowly and carefully roll up the window.



Leave the window all the way up for 24 hours. Repeat for other side.