

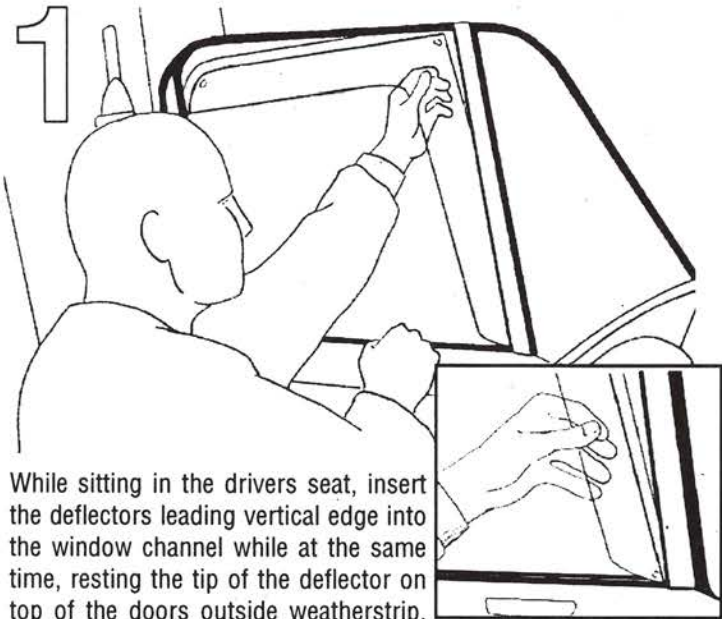
INSTALLATION INSTRUCTIONS

PLEASE NOTE: YOU *MUST* FOLLOW THESE INSTRUCTIONS TO INSTALL CORRECTLY.

WeatherTech®
WeatherFlectors™

If the deflector is not inserted properly, damage to the deflector and/or the window lift mechanism may occur.
Installation is recommended at temperatures above 50° Fahrenheit.

IMPORTANT! Please begin installation with drivers-side window. Installation can be performed from inside, or outside the cab of the vehicle. These instructions are written with an installation from **INSIDE THE CAB.**



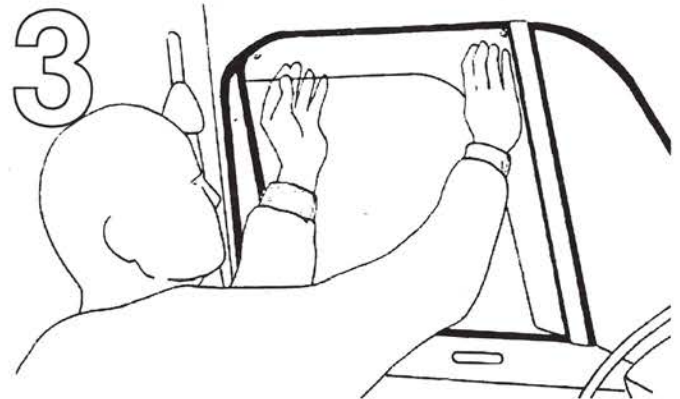
While sitting in the drivers seat, insert the deflector's leading vertical edge into the window channel while at the same time, resting the tip of the deflector on top of the door's outside weatherstrip. For proper fit, ensure that the only portion of the deflector that is inserted into the window channel (window track) is the *thin, opaque, machined edge*.

IMPORTANT!

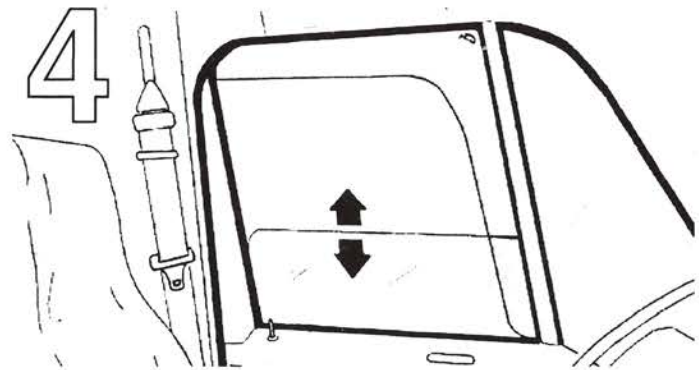
The flared-out bottom edge, or end of the deflector must be resting ON TOP of the door's outside weather-strip molding (also known as the "dew wiper").



With the leading vertical edge of the deflector fully inserted into the window channel, grasp the deflector firmly in the upper right-hand corner of the window opening with your right hand to hold it in place. With your left hand, grasp the deflector firmly near the label-end and flex the deflector carefully downward just until you can insert the flange of the deflector into the channel. Allow the deflector to spring up into place in the window.



Inspect to ensure that the deflector is correctly and completely seated into the window channel prior to closing window.



Carefully and slowly close and open your window 5 times to properly seat the deflector.