

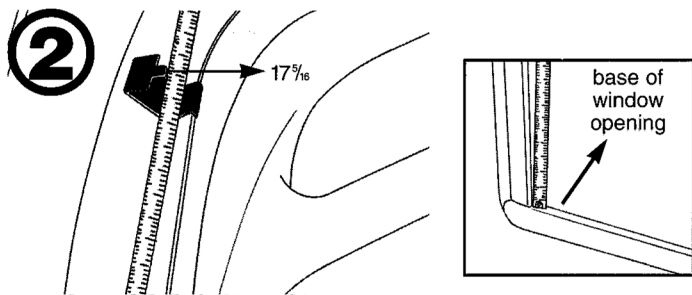
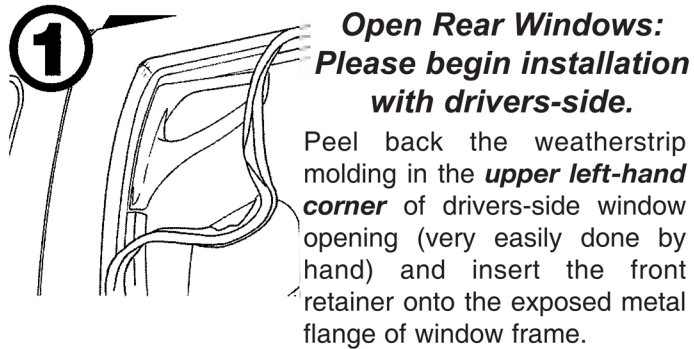
## Installation Instructions.

# WeatherTech®

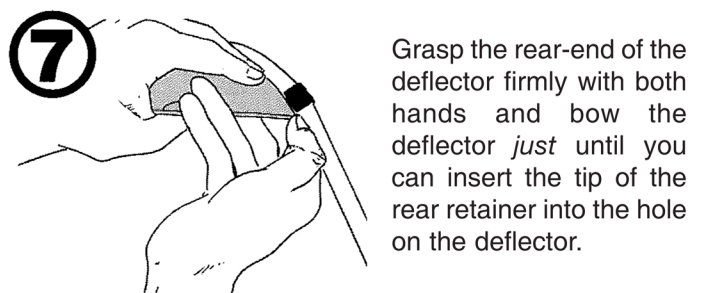
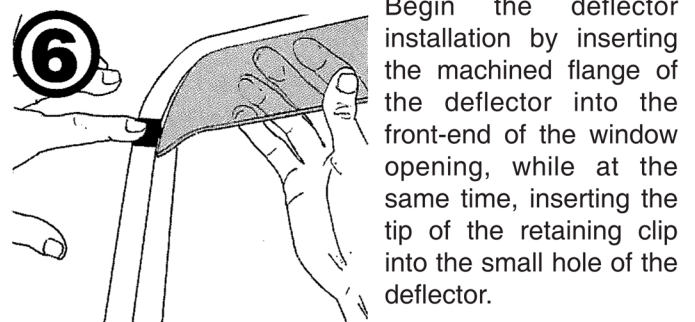
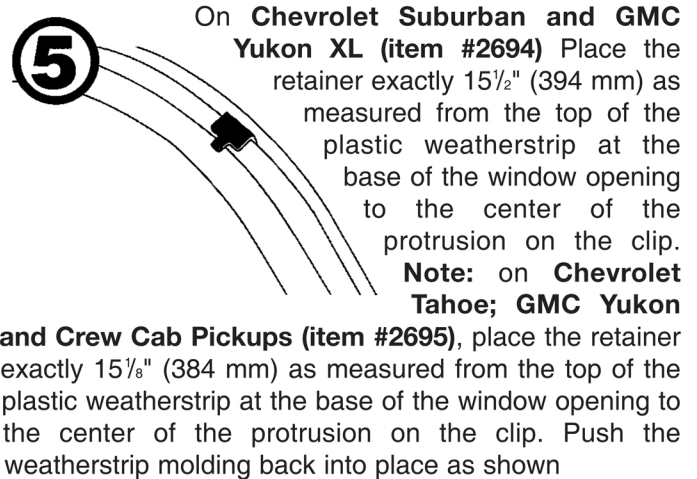
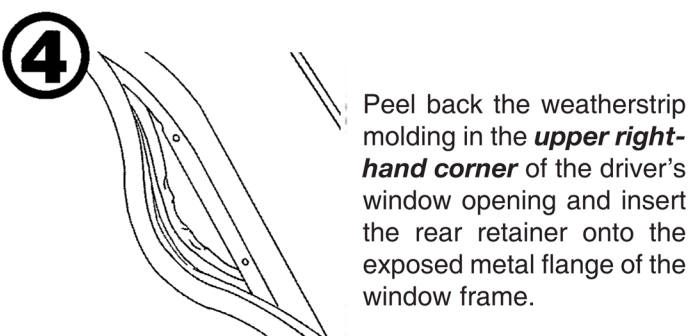
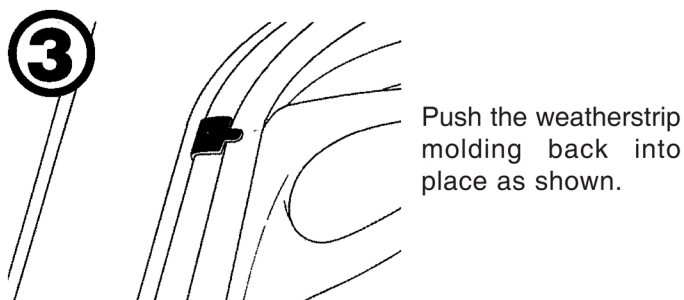
**Note:** Read and understand all instructions prior to beginning installation.

Chevrolet Suburban 00+, Chevrolet Tahoe 00+,  
GMC Yukon/Yukon XL 00+,  
Chevrolet/GMC Crew Cab full-size pickup 00+

**Contents:** Two rear window deflectors, four attachment clips.



Place the retainer exactly  $17\frac{5}{16}$ " (440mm) as measured from the top of the plastic weatherstrip at the base of the window opening (refer to inset drawing) to the center of the protrusion on the clip.



Prior to closing your window for the first time, please inspect the deflector to ensure that it is fully and properly inserted into the window channel and that the retaining clips are fully inserted into the holes on the deflector. Repeat steps 1-7 for passenger side installation.