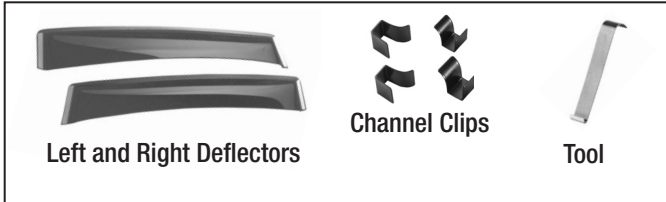


WeatherTech®

Side Window Deflectors - Rear with Channel Clips Installation Instructions

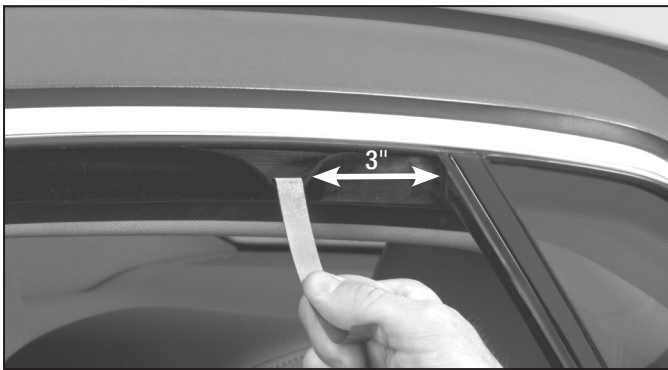
Contents



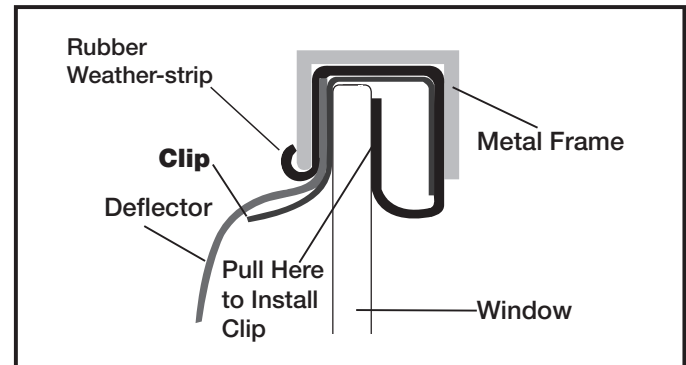
(2) Rear Side Window Deflectors, (4) Channel Clips and (1) Tool included. If there is a WeatherTech® label, it should be positioned toward the rear of the vehicle.

⚠ WARNING ⚠

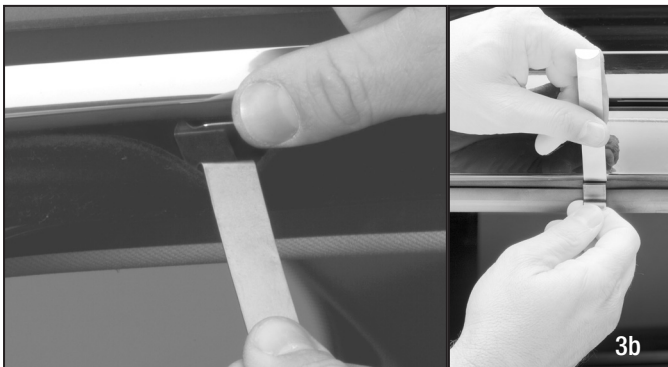
Accessories which are not properly fitted can be dangerous. Read the instructions carefully before installation, and comply with the instructions at all times. If in doubt, contact WeatherTech®.



1 Make sure that the window is clean and dry. Then, pull down the weather-strip with the provided tool approximately 3" from the rear edge.



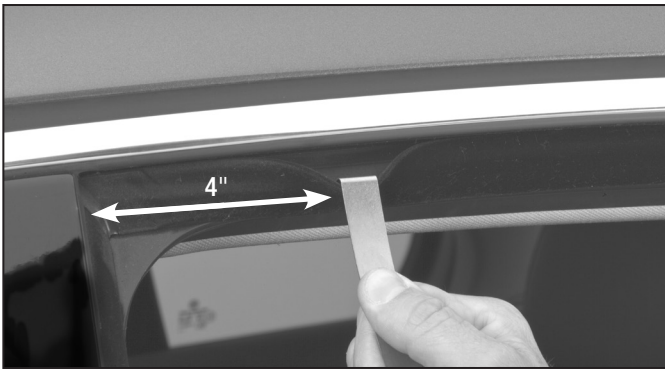
2 View of proper installation.



3 Continue pulling down the weather-strip to insert a channel clip. Small/short channel clips can be easily installed by inserting the middle flat portion upwards into the channel first. Longer channel clips can be installed by using the installation tool shown in Picture 3b.



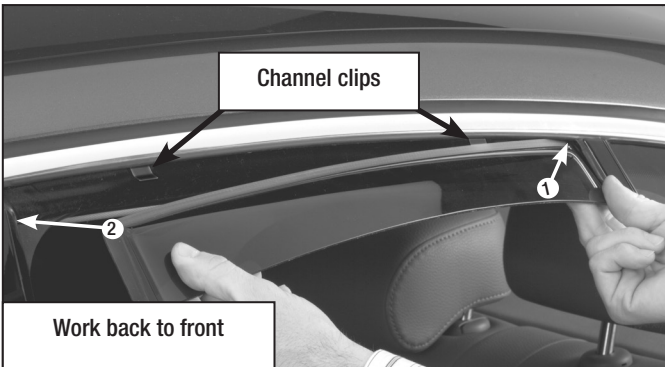
4 Push clip in, and replace weather-strip.



5 Pull down the weather-strip in the front location, approximately 4" from the front. Then, push clip in, and replace weather-strip.



6 If present; remove film.



7 Working back to front, fully insert machined flange of deflector into window opening over the clips, while pressing inward against channel clips. If the deflector has hemispherical notches, center the clips under them prior to deflector installation.



8 Inspect deflector to ensure that it is fully inserted into the window channel. The channel clips should match the contour on the backside of the deflector. Next, close your window fully and press firmly against weather-strip from front to rear.

9 Repeat Steps 1-8 on the passenger side.

Congratulations!

Your new WeatherTech® Side Window Deflectors have been installed!

Installation Tips

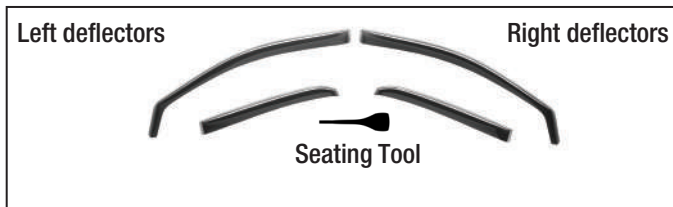
1. When installed correctly, the bottom edge of the front deflector must rest on the door's outer weather-strip molding and only the thin flange is in the channel between the glass and inner seal.
2. Some vehicles are equipped with 2 rubber window channels. If true for your vehicle, use the top rubber channel for clip placement.
3. Slowly raise the window up without activating the auto-up. If unable to fully close, have someone press the window between their hands upwards. Simultaneously raise the window up in small increments until fully closed.
4. If safety features cause the window to go down, reset the window by:
 - a. Roll the window down, hold the down button for 5 seconds.
 - b. Raise the window without activating the auto-up feature. Hold the up button for 3 seconds.
5. Leave windows closed fully for 12 hours. Deflector may take longer to acclimate below 60° F / 16° C.

WeatherTech®

Side Window Deflectors

Installation Instructions

Contents



(2 or 4) Side Window Deflectors and (1) Seating Tool included. If there is a WeatherTech® label, it should be positioned toward the rear of the vehicle.

⚠ WARNING ⚠

Accessories which are not properly fitted can be dangerous. Read the instructions carefully before installation, and comply with the instructions at all times. If in doubt, contact WeatherTech®.



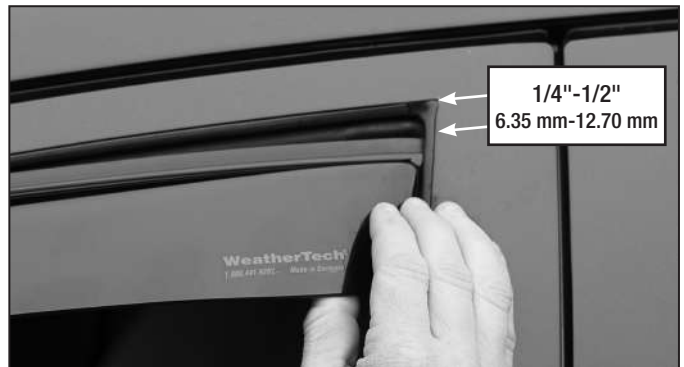
1 Make sure windows are clean and dry. Then, lower windows halfway.



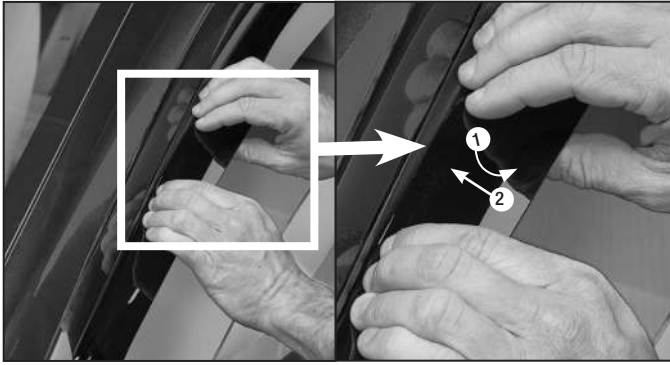
2 Slide forward, into window channel. Ensure edge rests on top of the outer window sill!



3 Bow the deflector outward.



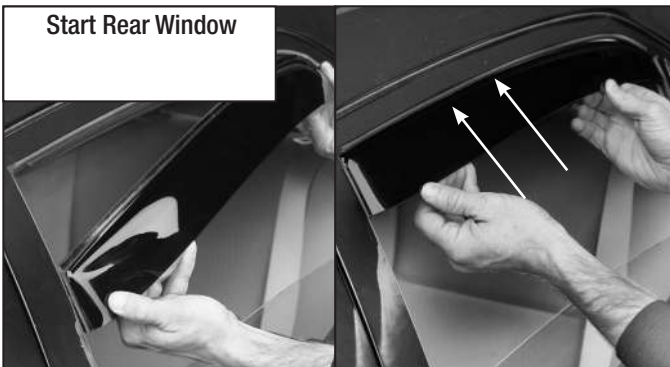
4 Insert rear edge leaving a gap at the top.



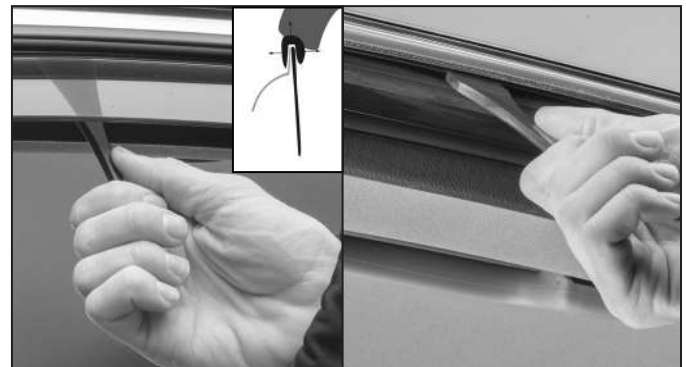
5 Pull down and tuck in working from front to back.



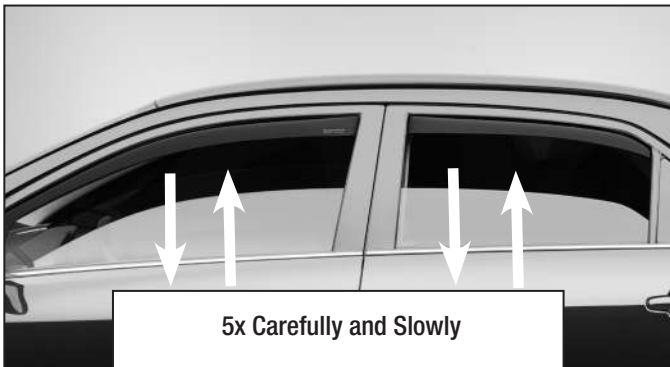
6 Carefully pull outward on the deflector.



7 Be sure to remove adhesive backing before installation (if supplied). Slide upward into place, then gently pull outward to set the deflector.



8 Carefully run seating tool between deflector and window seal to seal the deflector.



9 Roll all windows up in small increments. Make sure to do this CAREFULLY and SLOWLY!!

Congratulations!
Your new WeatherTech®
Side Window Deflectors
have been installed!

Installation Tips
<ol style="list-style-type: none"> 1. When installed correctly, the bottom edge of the front deflector must rest on the door's outer weather-strip molding and only the thin flange is in the channel between the glass and inner seal. 2. Slowly raise the window up without activating the auto-up. If unable to fully close, have someone press the window between their hands upwards. Simultaneously raise the window up in small increments until fully closed. 3. If safety features cause the window to go down, reset the window by: <ol style="list-style-type: none"> a. Roll the window down, hold the down button for 5 seconds. b. Raise the window without activating the auto-up feature. Hold the up button for 3 seconds. 4. Leave windows closed fully for 12 hours. Deflector may take longer to acclimate below 60° F / 16° C.