

# WeatherTech®

## Easy-On™ Stone & Bug Deflectors

### Important Safety Information



- CAUTION - Before driving, ensure that the hood shield is properly secured to vehicle.
- Do not use automatic "brush-style" car washes.
- Do not use cleaning solvents of any kind.
- Periodically check all components for tightness.

### Contents

**NOTE:** Actual product may vary from illustration.



Hood shield



Bump On  
x4

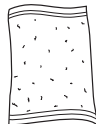


Fastener  
x4

### Tools Required



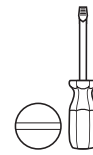
Car Wash Supplies



Clean Towel



Phillips  
screwdriver



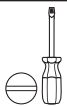
Flathead  
screwdriver

### Preparation Before Painting / Installation

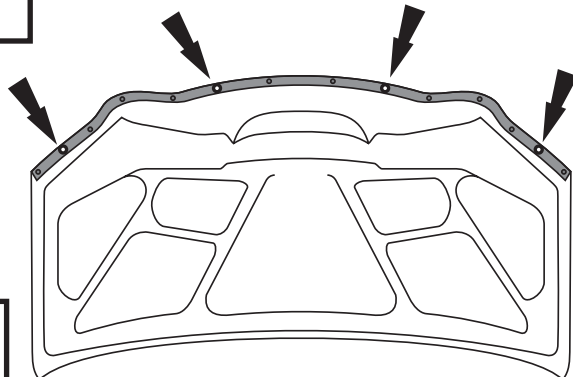
- A trial fit is recommended to ensure proper positioning and fit.
- Check fit of parts before painting as we will not accept the return of modified or painted parts.
- Wash and dry your vehicle to remove any debris and/or dirt from the installation area.

### Installation Steps

**NOTE:** Actual application may vary slightly from illustrations.

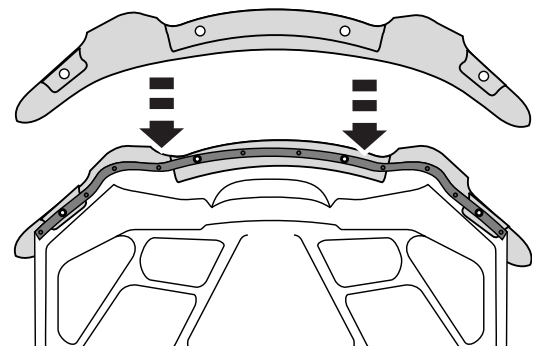


Open hood. Locate (4) fasteners that attach the rubber seal to the underside of the hood. Remove and discard.



1

Position the hood shield with the tabs sliding **between** the hood and rubber seal. Align holes.

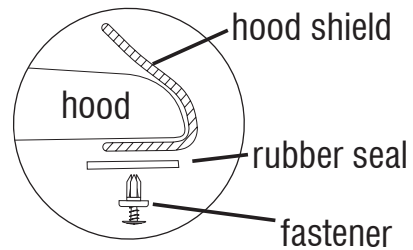
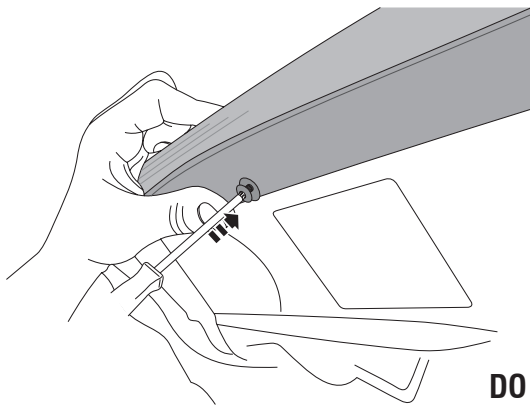


2

## Installation Steps

**NOTE:** Actual application may vary slightly from illustrations.

Insert (1) fastener and screw until snug. Repeat for remaining (3) fasteners.

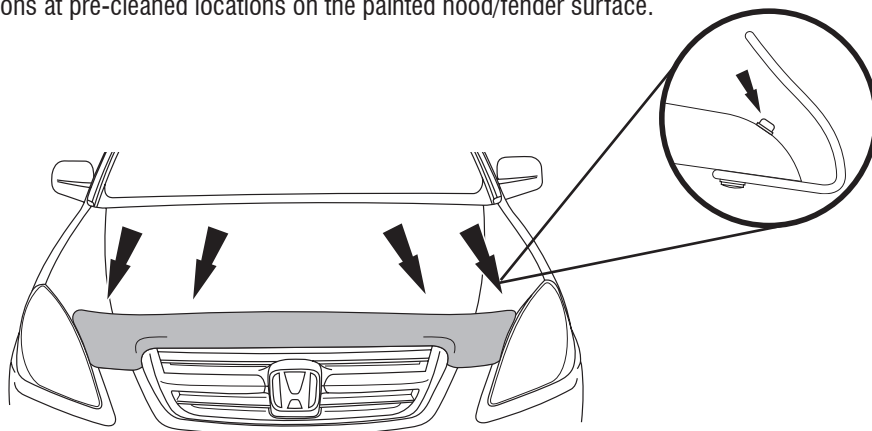


3

**DO NOT OVER TIGHTEN**



Install bump ons at pre-cleaned locations on the painted hood/fender surface.



4

## Care and Cleaning

- Wash only with mild soap & dry with a clean cloth.