

WeatherTech®

Easy-On™ Stone & Bug Deflectors

Important Safety Information



- CAUTION - Before driving, ensure that the hood shield is properly secured to vehicle.
- Do not use automatic “brush-style” car washes.
- Do not use cleaning solvents of any kind.
- Periodically check all components for tightness.

Contents **NOTE:** Actual product may vary from illustration.



Hood Shield



Alcohol Pad x2



Bump On x4

Tools Required



Car Wash Supplies



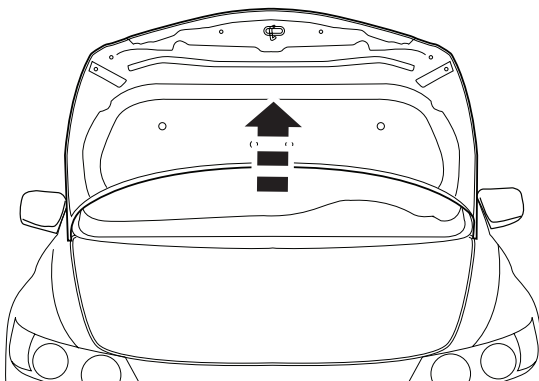
Clean Towel

Preparation Before Painting / Installation

- A trial fit is recommended to ensure proper positioning and fit.
- Check fit of parts before painting as we will not accept the return of modified or painted parts.
- Wash and dry your vehicle to remove any debris and/or dirt from the installation area.

Installation Steps **NOTE:** Actual application may vary slightly from illustrations.

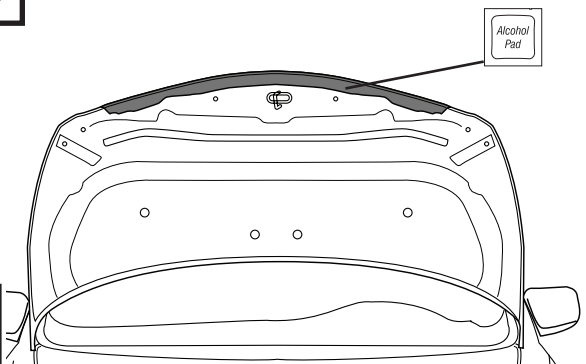
Open hood.



1

Alcohol Pad

Locate chrome trim under hood and clean mounting surface with alcohol pads.



2

Installation Steps

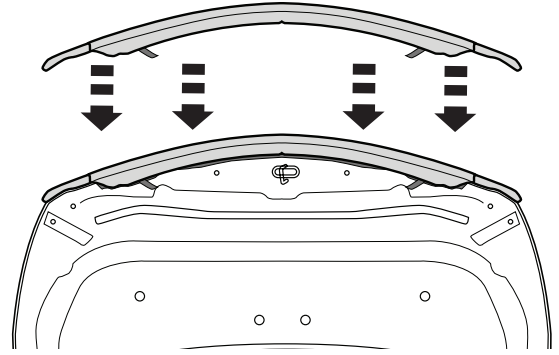
NOTE: Actual application may vary slightly from drawings.

Peel back 2" (5 cm) of tape liner from each end of bottom flange.



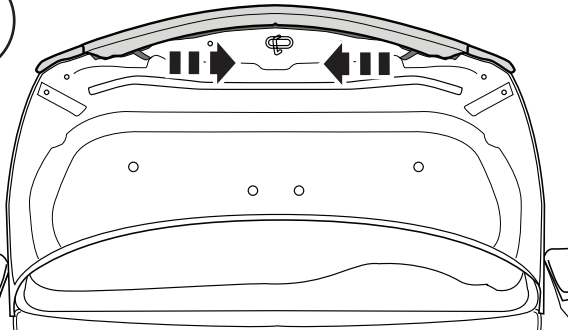
3

Align hood shield with chrome hood trim.



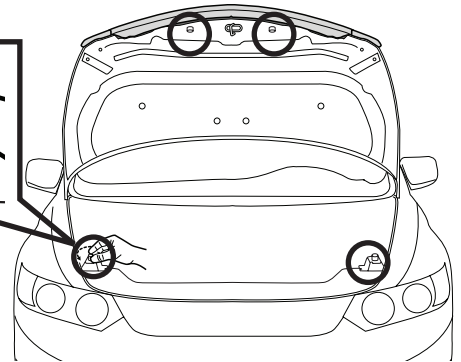
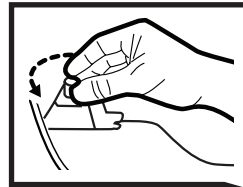
4

Remove remaining tape liner by pulling on exposed ends. Apply pressure to outboard flanges to ensure tape adhesion.



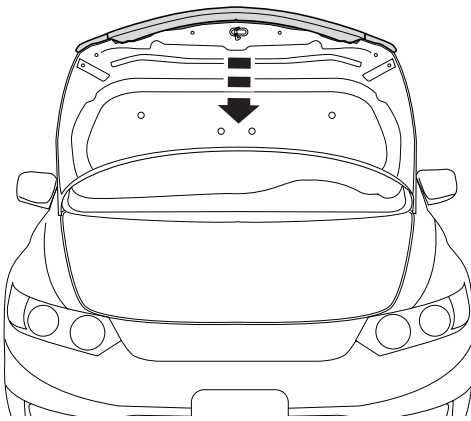
5

Adjust bumper stops as needed to ensure hood shield clears grille and headlights.



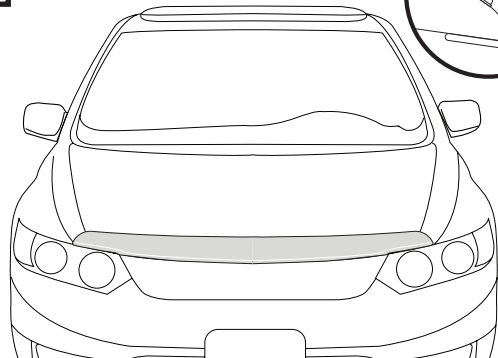
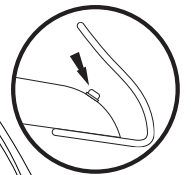
6

Close hood.



7

Install (4) bump ons.



8

Care and Cleaning

- Wash only with mild soap & dry with a clean cloth.