

WeatherTech®

Easy-On™ Stone & Bug Deflectors

Important Safety Information



- CAUTION - Before driving, ensure that the hood shield is properly secured to vehicle.
- Do not use automatic "brush-style" car washes.
- Do not use cleaning solvents of any kind.
- Periodically check all components for tightness.

Contents

NOTE: Actual product may vary from illustration.



Hood shield



Bump On
x4



Fastener
x4

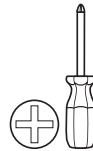
Tools Required



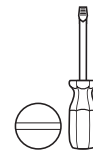
Car Wash Supplies



Clean Towel



Phillips
screwdriver



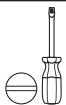
Flathead
screwdriver

Preparation Before Painting / Installation

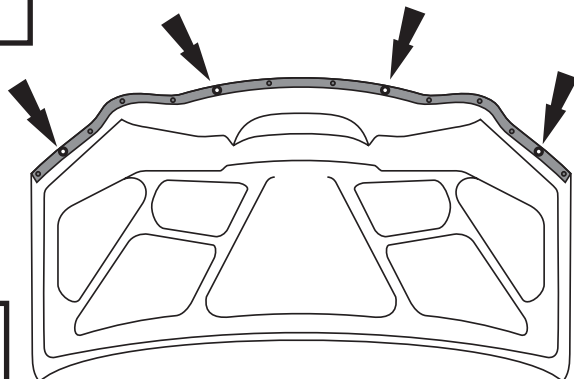
- A trial fit is recommended to ensure proper positioning and fit.
- Check fit of parts before painting as we will not accept the return of modified or painted parts.
- Wash and dry your vehicle to remove any debris and/or dirt from the installation area.

Installation Steps

NOTE: Actual application may vary slightly from illustrations.

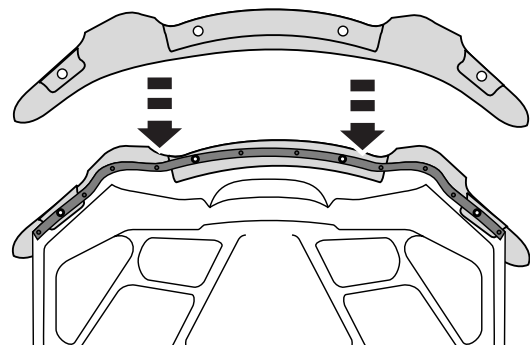


Open hood. Locate (4) fasteners that attach the rubber seal to the underside of the hood. Remove and discard.



1

Position the hood shield with the tabs sliding **between** the hood and rubber seal. Align holes.

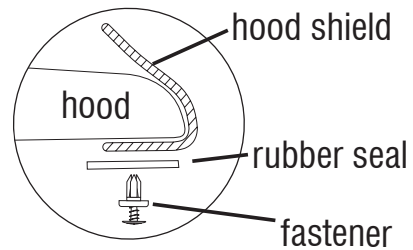
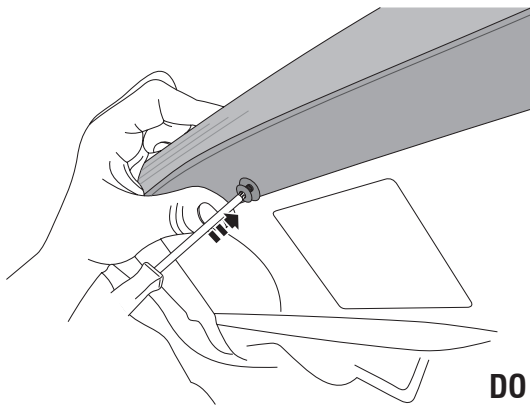


2

Installation Steps

NOTE: Actual application may vary slightly from illustrations.

Insert (1) fastener and screw until snug. Repeat for remaining (3) fasteners.

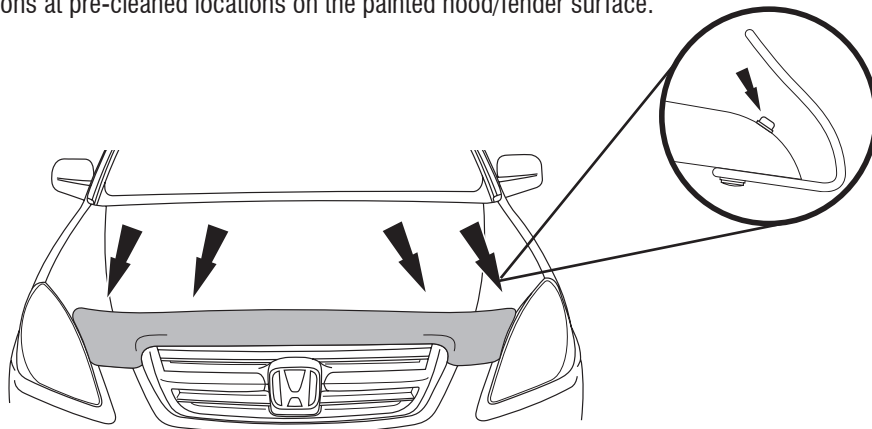


3

DO NOT OVER TIGHTEN



Install bump ons at pre-cleaned locations on the painted hood/fender surface.



4

Care and Cleaning

- Wash only with mild soap & dry with a clean cloth.

Shop for other stone & bug deflectors on our website.