

WeatherTech®

Easy-On™ Stone & Bug Deflectors

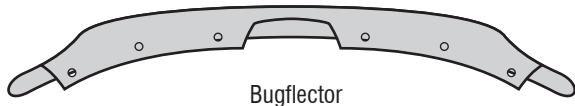
Important Safety Information



- CAUTION - Before driving, ensure that the hood shield is properly secured to vehicle.
- Do not use automatic "brush-style" car washes.
- Do not use cleaning solvents of any kind.
- Periodically check all components for tightness.

Contents

NOTE: Actual product may vary from illustration.



Scrivet Fastener x6



Bump On x4

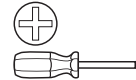
Tools Required



Car Wash Supplies



Clean Towel



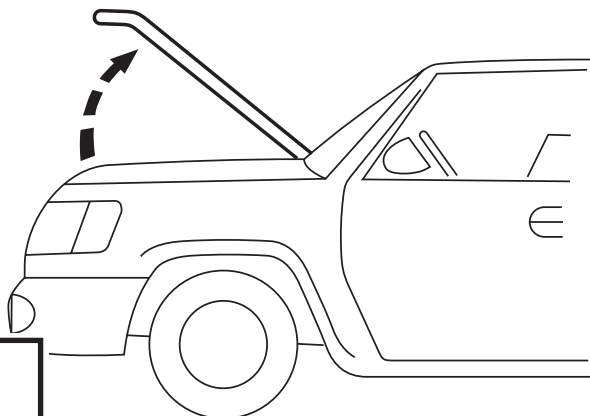
Phillips Screwdriver

Preparation Before Painting / Installation

- A trial fit is recommended to ensure proper positioning and fit.
- Check fit of parts before painting as we will not accept the return of modified or painted parts.
- Wash and dry your vehicle to remove any debris and/or dirt from the installation area.

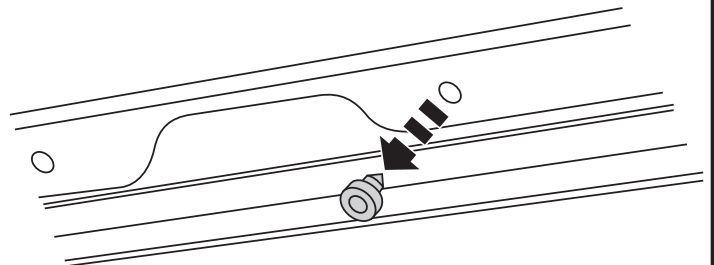
Installation Steps

NOTE: Actual application may vary slightly from illustrations.



1

Vehicles equipped with hood mounted bumper stops:
Bumper stops must be removed prior to installation.



2

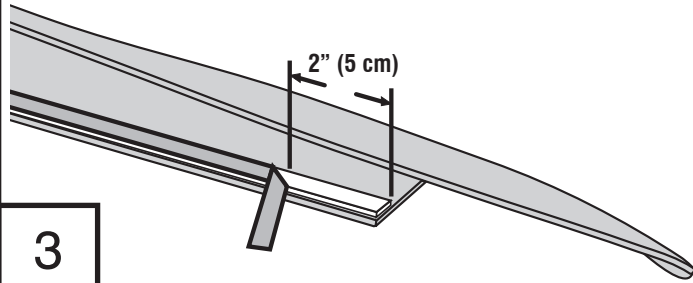
Installation Steps

NOTE: Actual application may vary slightly from drawings.

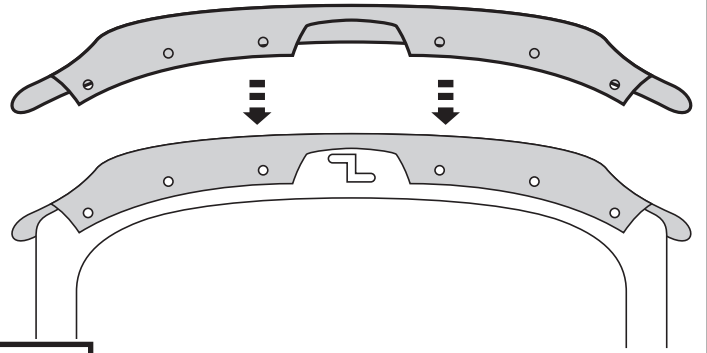
2002 & Up Explorer

(1995-2001 Explorer continue to **Step 4**)

Peel back 2" (5cm) of tape liner from each end of Bugdeflector.



3

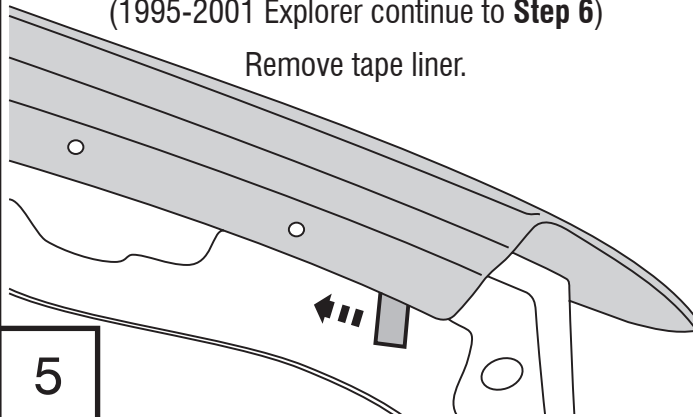


4

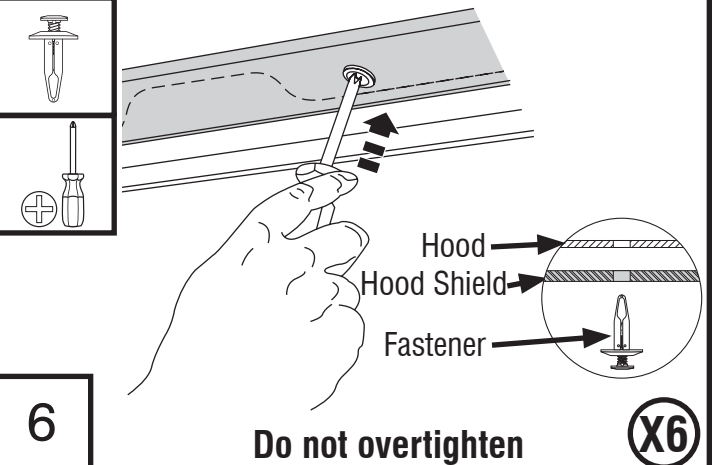
2002 & Up Explorer

(1995-2001 Explorer continue to **Step 6**)

Remove tape liner.



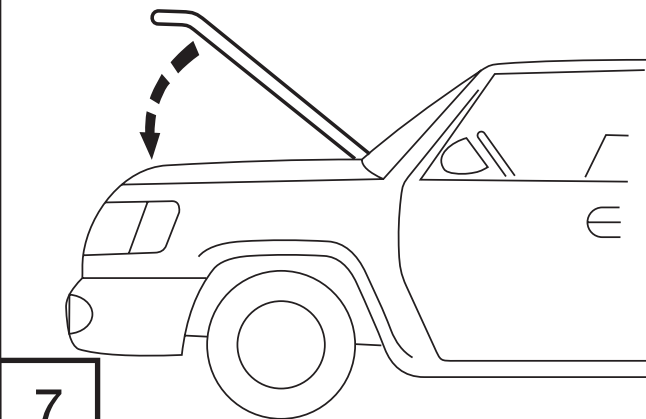
5



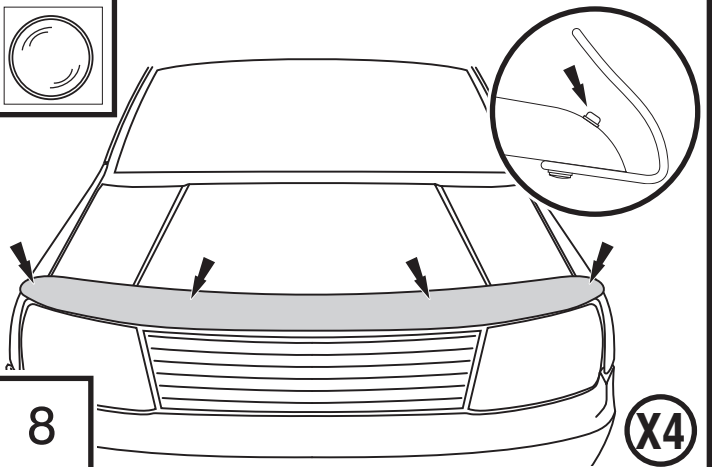
6

Do not overtighten

X6



7



8

X4

Care and Cleaning

- Wash only with mild soap & dry with a clean cloth.