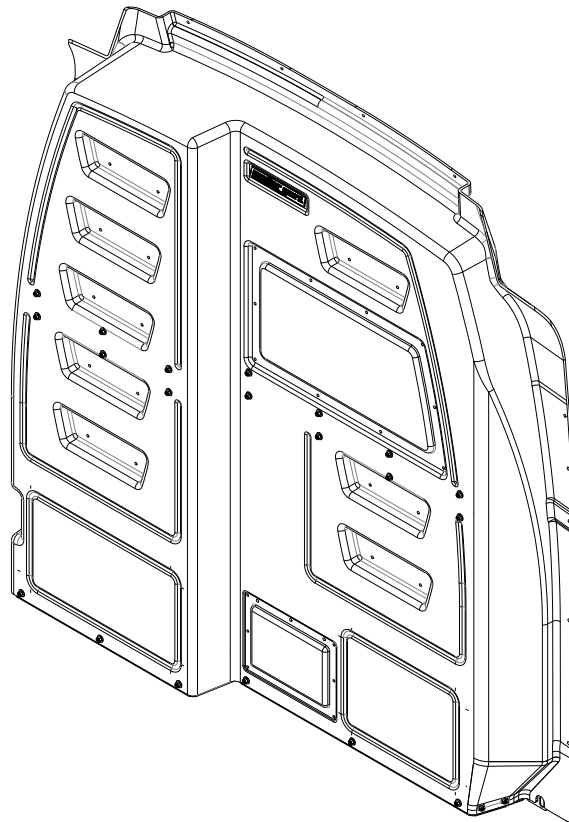




VAN STORAGE SOLUTIONS
FOR THE WAY YOU WORK™

CAB/MAX™
COMPOSITE BULKHEAD

**INSTALLATION INSTRUCTIONS for
MID & HIGH ROOF FORD TRANSIT
COMPOSITE BULKHEAD**



MODELS 96310-3-01 AND 96320-3-01

ATTENTION: PLEASE READ AND UNDERSTAND ALL INSTRUCTIONS AND WARNINGS BEFORE ASSEMBLING, INSTALLING OR USING THIS PRODUCT.

INSTALLATION GUIDELINES

- Installing your WEATHER GUARD® Composite Bulkhead for the Mid & High Roof Ford Transit is very clear cut following these instructions.
- Before cutting or drilling in the B-pillar, verify the location of the seat belt mechanism and electrical cables to prevent damaging vital components.
- Always wear protective eyewear to keep debris out of your eyes when installing WEATHER GUARD® Van Products.
- Tighten all M6 hardware to 76 in-lb when ready.
- A Window Accessory (96906-3-01) and a Dog Hatch™ Door Accessory (96908-3-01) are also available for this product. If installing either of these accessories, it is recommended that they be installed to the bulkhead before installing the bulkhead into the van.
- Additional Accessory Panels (96905-3-01) are also available.
- **This product is designed and intended for use on all wheelbases of Mid Roof (96310-3-01) and High Roof (96310-3-01 & 96320-3-01) Ford Transit vans.**

OPERATION GUIDELINES

- Any modifications made to this product, or use of this product for any other purpose than its intended use, could create a hazardous condition that can cause serious personal injury or property damage.
- **At the end of the first week of use, check all of the fasteners for proper tightness and then check every three months thereafter.**

HARDWARE KIT

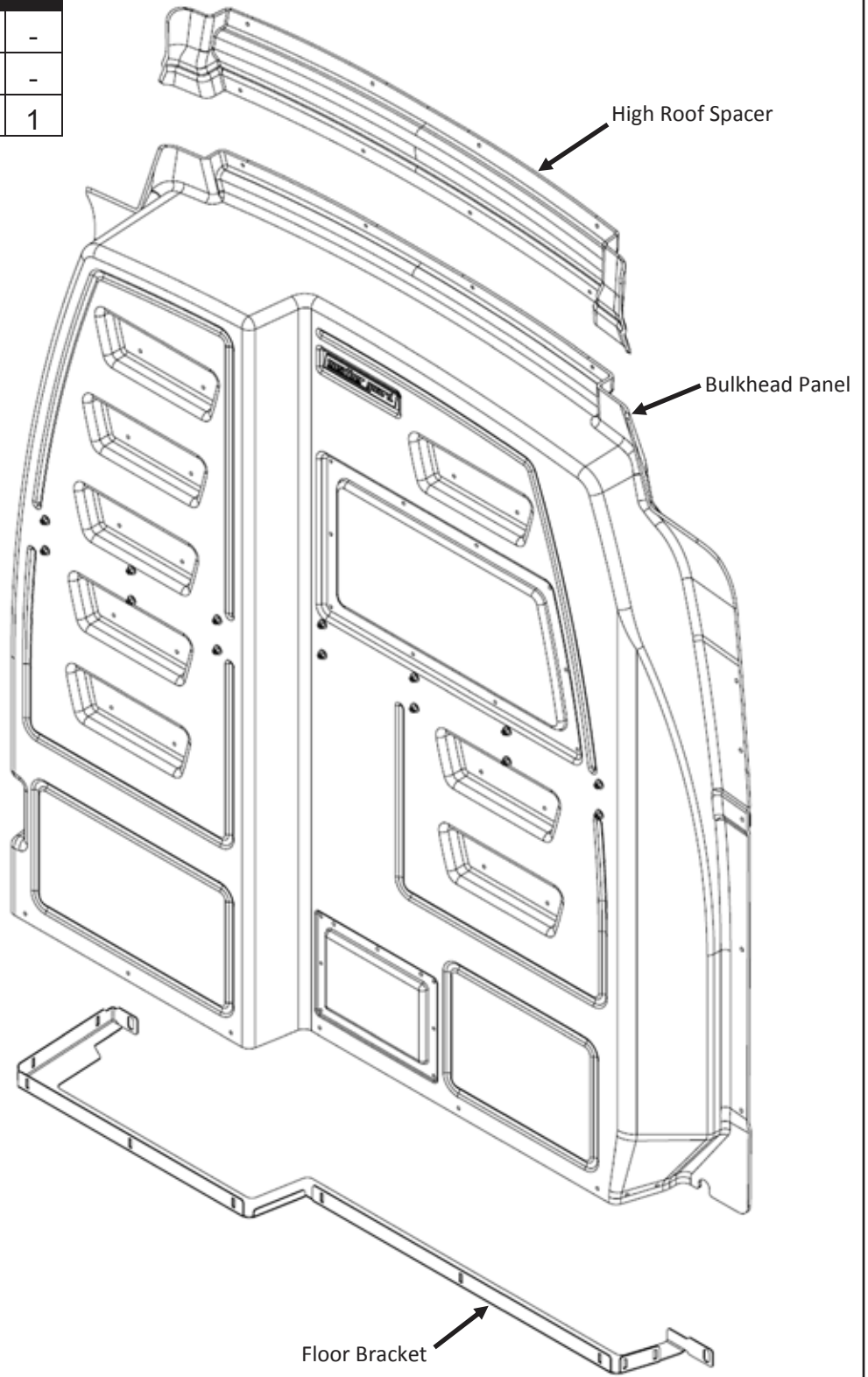
DESCRIPTION	96310-3-01	96320-3-01
M6-1.0 Blind Fastener	9	-
M6-1.0 Nylon Lock Nut	10	4
M6-1.0 x 20mm Carriage Bolt	10	-
M6-1.0 x 20mm Bolt	-	4
M6-1.0 x 30mm Bolt	13	-
M6-1.0 x 50mm Bolt	1	-
1/4" Washer	23	4
Blind Fastener Installation Tool	1	-

TOOLS REQUIRED

Ratchet
 10mm Socket
 13mm Socket
 T30 Torx key/socket
 Socket Extension(s)
 10mm Wrench
 9/16" Wrench
 Drill
 1/8" Drill Bit
 5/16" Drill Bit
 3/8" Drill Bit
 Torque wrench

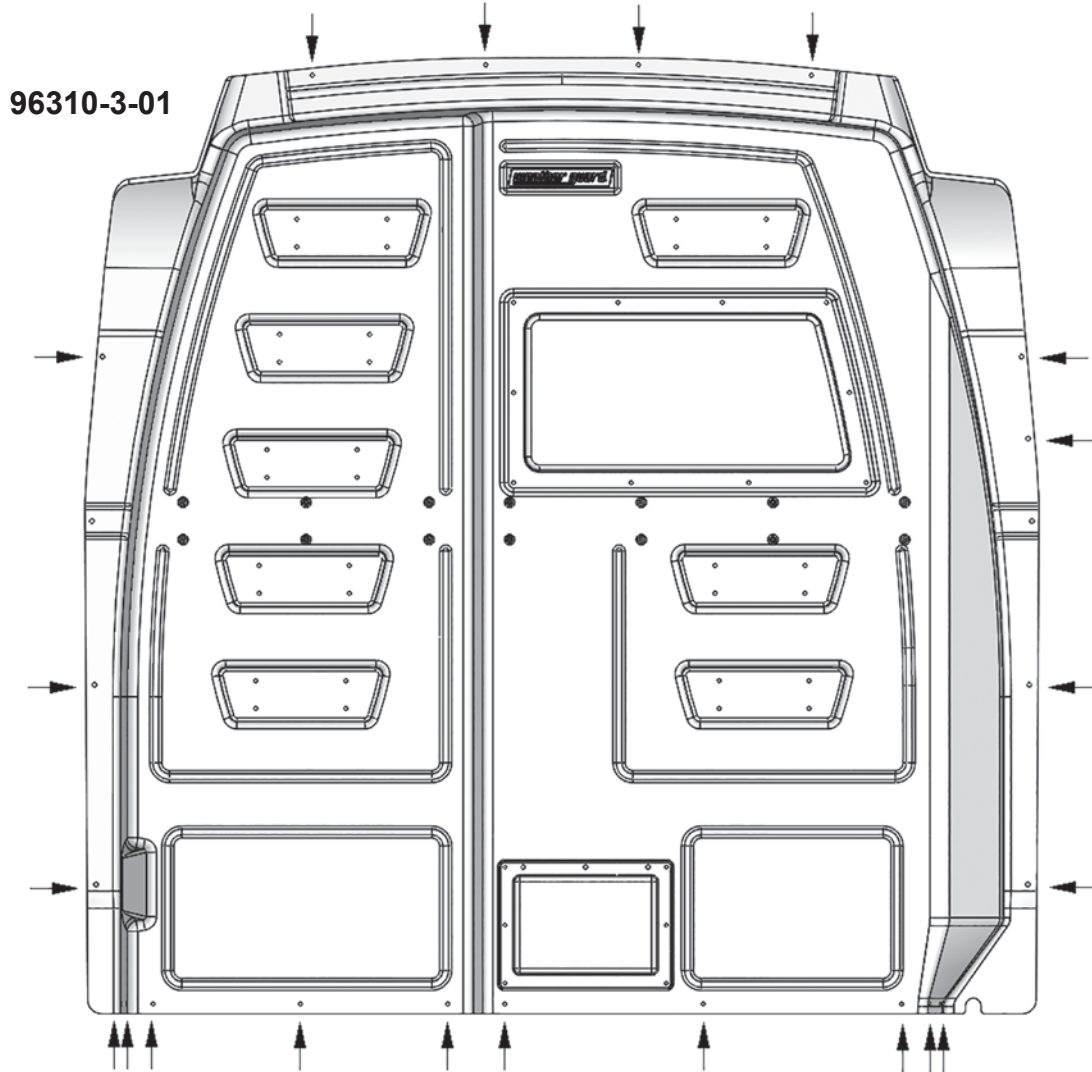
PARTS LIST

DESCRIPTION	96310-3-01	96320-3-01
Floor Bracket	1	-
Bulkhead Panel	1	-
High Roof Spacer	-	1



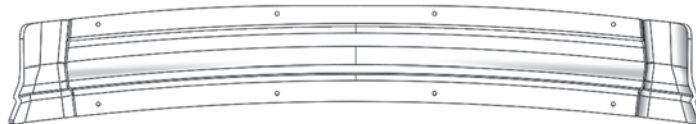
BULKHEAD PREPARATION INSTRUCTIONS

STEP 1. Drill 5/16" holes in the bulkhead panel at the dimples along the sides, top, and bottom of the panel.



STEP 1a. If installing in a High Roof van, drill 5/16" holes in the High Roof Spacer at all 8 dimple locations.

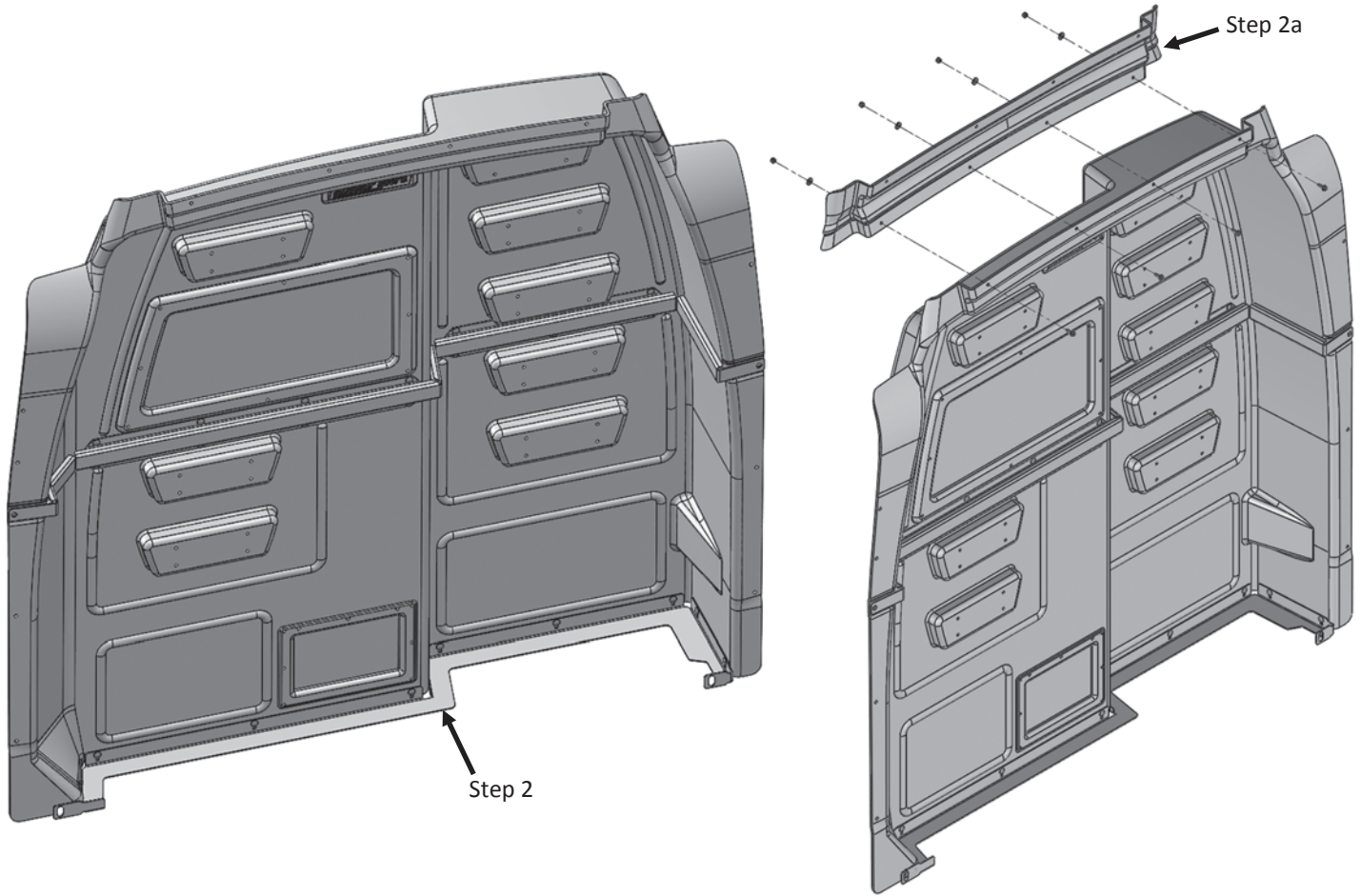
96320-3-01



BULKHEAD & VAN PREPARATION INSTRUCTIONS

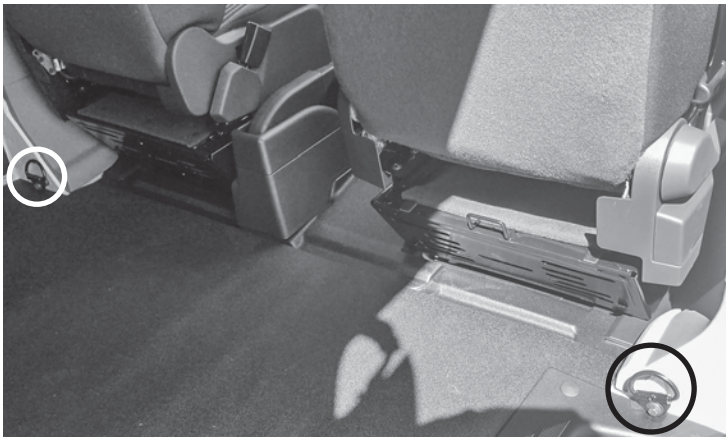
STEP 2. Loosely install the floor bracket to the bulkhead panel with 10 M6 carriage bolts, washers, and nylon lock nuts.

STEP 2a. If installing in a High Roof van, attach the High Roof Spacer to the panel using 4 M6 x 20mm bolts, washers, and nylon lock nuts.



STEP 3. Remove the D-Rings and Grab Handle from the B-pillar of the van (Keep for later use).

STEP 3a. If the van is equipped with a wall liner, the front bracket on the driver side will need to be removed from the B-Pillar behind the liner (see right image below).



Step 3—D-Rings



Step 3—Grab Handle

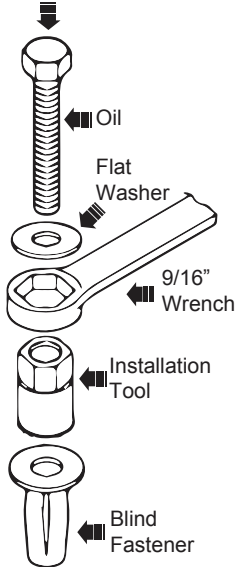


Step 3a—Front Liner Bracket

VAN PREPARATION INSTRUCTIONS

STEP 4. Install 4 blind fasteners in the designated holes in the driver side B-pillar and 1 blind fastener in the designated hole in the passenger side B-Pillar (Some of the B-pillar holes are too small and will need to be drilled out to 3/8" first).

Use 10mm socket



INSTALLATION PROCEDURE USING BLIND FASTENERS

Place a drop of oil on the M6-1.0 x 50mm bolt before assembling as shown on left.

Place the Blind Fastener in the hole and use a 10mm socket and driver to tighten the bolt until the Blind Fastener is fully seated.

When setting the bolt, it will start out tight. As the Blind Fastener "bulbs" out it will get easier, until it bottoms out or sets.

Make sure the Blind Fastener and the installation tool do not slip during the installation.



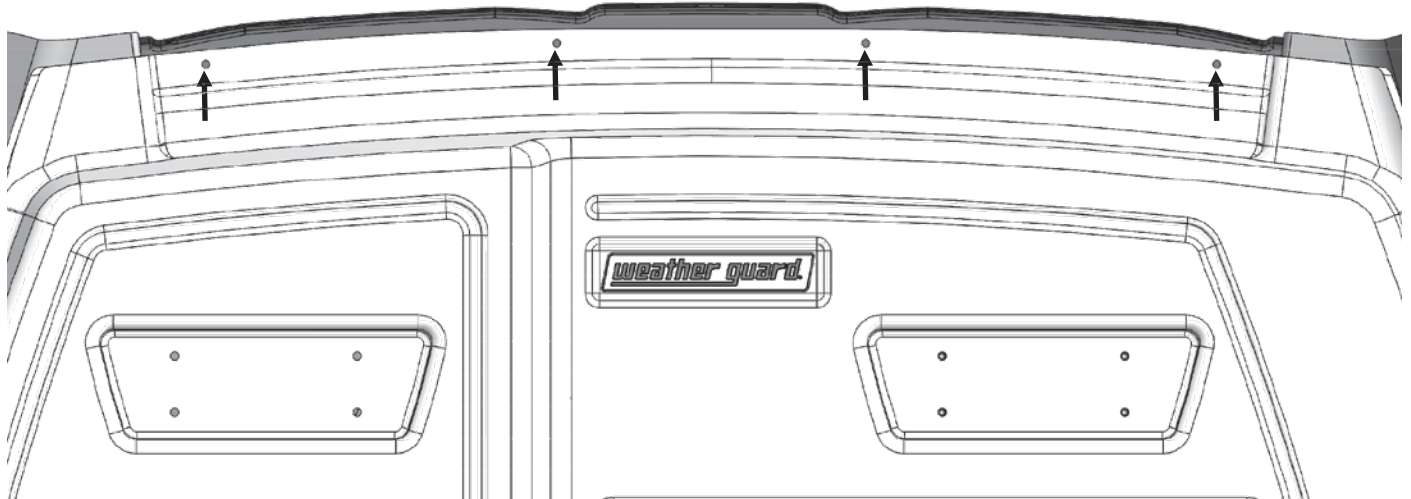
VAN PREPARATION INSTRUCTIONS

STEP 5. Place the Bulkhead into the van against the B-pillar and loosely bolt the bulkhead in place using the holes that are in line with the reinforcement bracket (second from the top on the driver side and third from top on the passenger side)

Note: It may be easiest to press the driver side against the B-pillar first and attach its reinforcement bracket bolt, and then press the passenger side against the B-pillar and attach its reinforcement bracket bolt.



STEP 6. Mark the top bulkhead hole locations in the roof bow.



STEP 7. Remove the two bolts and pull the Bulkhead back out of the van or push it out of the way into the back of the van.

STEP 8. Drill 1/8" pilot holes in the marked locations in the roof bow and then re-drill with a 3/8" drill bit and install blind fasteners in them.

BULKHEAD INSTALLATION INSTRUCTIONS

STEP 9. Set the Bulkhead back in place against the B-pillar of van and bolt in place as done in Step 5.

STEP 10. Loosely bolt the Grab Handle back in place over the Bulkhead using the OEM hardware.



STEP 11. Loosely bolt the D-Rings back in place through the floor bracket.



Driver Side D-Ring (Cab Side of Bulkhead)



Passenger Side D-Ring (Cargo Side of Bulkhead)

STEP 12. Bolt the Bulkhead to the B-pillar and roof bow using M6 x 30mm bolts and flat washers. Tighten these bolts and the Grab Handle bolts to 76 in-lbs.

STEP 13. While keeping the floor bracket down flat against the floor/floor liner, tighten the D-Rings to 37 ft-lbs.

STEP 14. Tighten the nuts that attach the floor bracket to the bulkhead panel to 76 in-lbs.