



VAN STORAGE SOLUTIONS
FOR THE WAY YOU WORK™

INSTALLATION MANUAL

MOUNTING CHANNEL KIT, 102 IN (2102-0-01)

ATTENTION: PLEASE READ AND UNDERSTAND ALL INSTRUCTIONS AND WARNINGS BEFORE ASSEMBLING, INSTALLING OR USING THIS PRODUCT.

TOOLS REQUIRED

- RTV automotive/exterior sealant (not included)
- Thread Lock Compound (not included)
- 5MM hex key (do not use a 3/16" hex key or bit)
- 1/2" in Socket or Wrench
- Torque wrench
- Utility knife

! CAUTION

Be safe - always wear protective eyewear to keep debris out of your eyes when installing WEATHER GUARD® Van Products.

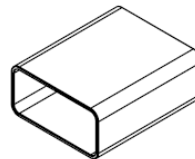
PARTS LIST



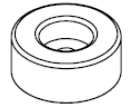
10X 5/16" WASHER



8X M8X35MM BOLT



4X RED CAP



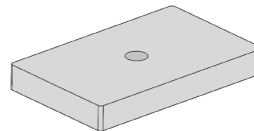
2X 5/8" BUMPER



2X 5/16"X1-1/4" BOLT



2X 5/16" NYLON LOCK NUT



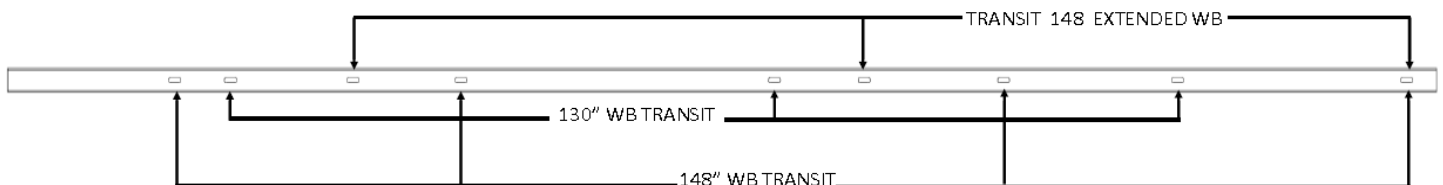
8x 3/8" MOUNTING PAD



2x ALUMINUM MOUNTING CHANNELS

- Use the correct Weather Guard mounting channel for your type of van.
- This mounting kit is designed for Ford Transit vans.
- Attach mounting channels only to vehicle manufacturer provided mounting points.
- Vehicle manufacturers specifically prohibit adding additional mounting points through the van roof.

MOUNTING CHANNEL HOLE LAYOUT REFERENCE:



REAR OF VAN



FRONT OF VAN



ATTENTION: PLEASE READ AND UNDERSTAND ALL INSTRUCTIONS AND WARNINGS
BEFORE ASSEMBLING, INSTALLING OR USING THIS PRODUCT.

INSTALLATION INSTRUCTIONS

GENERAL INSTRUCTIONS:

The mounting channel kit includes mounting channels and hardware to attach the channels to the roof of a Ford Transit van using weld nuts provided by FORD, the OEM van manufacturer.

STEP 1 Ford provides M8 weld nuts in the roof of the Transit. You need to use these mounting points to attach the mounting channels to the van. **Do not drill additional holes or install blind fasteners in the roof of a Ford Transit van.**

STEP 2 Position mounting channels on roof of van. Use the chart above showing the orientation of mounting holes to channel slots for each van type. Aligning the slots in the channel with the OEM mounting points starting from the rear and working to the front of the van.

STEP 3 Remove the 6 or 8 plastic caps covering the mounting points of your van. Use the utility knife to cut paint if necessary. **Clean excess paint and debris from the threads of the M8 weld nut.**

STEP 4 Position the 3/8" thick mounting pads on the roof between the mounting channels and the openings in the roof, sealing them in place with RTV sealant (not included) to the van roof around the mounting points to prevent water from leaking into the vehicle. Use more RTV sealant between the mounting channel and the mounting pad.

STEP 5 Depending on which Weather Guard van roof rack you are installing and how many cross-members are needed, insert the stud bolt plates **from the roof rack kit** into the channel at this time. Use **kit 7760** if no stud bolt plates were included.

STEP 6 Attach red cap to ends of mounting rails. Use the utility knife to cut a small slit in the top of the cap to accommodate the mounting stud plate.

STEP 7 Apply thread lock compound (not included) to the M8 mounting bolts.

STEP 8 Attach the mounting channels to the van using the M8 bolts and 5/16 in washers and insert them through the mounting channel and spacer and into the Transit roof weld nuts with the 5MM hex bit and a torque wrench. Tighten mounting bolts until the mounting channels are fully seated to the roof. Do not exceed 10 ft-lbs. Avoid using an impact wrench.

The mounting channels should be fully seated with no play or movement. If the mounting channels are loose or not fully seated, remove them and clean out the weld nuts. Debris from the van manufacturing process can build up in the weld nuts. After cleaning out the weld nuts, repeat STEP 8.

VEHICLE SPECIFIC INSTALLATION NOTES:

FORD TRANSIT 130 IN WHEEL BASE MID-ROOF VANS:

Because of the 130in. Wheel base, **mid-roof** Transit roof design, there is a small gap between the roof and the front of the mounting channel. **Do not install blind fasteners into the unsupported roof over the passenger compartment.** Instead, to provide a solid support for the front of the mounting channel, attach the Bumpers to the underside of the channel using two each of the 5/16-18 x 5/8 in mounting bolt, the 5/16 in washer, and the 5/16-18 lock nuts. Tighten to 10 ft-lbs. the spacer. Bumpers are not needed on low roof vans.

FORD TRANSIT 148 IN WHEEL BASE (REGULAR and EXTENDED BODY):

Bumpers are not needed on 148 in wheel base Transit vans. Follow the hole reference chart for locating the mounting channels to the van roof.

 **WARNING**

This product is only intended and safe for use in storing and transporting small tools, equipment and other similar materials. These instructions are to be followed using the parts and fasteners supplied for proper installation. Any modifications or improper installation of this product will create a hazardous condition that could result in death, serious personal injury and/or property damage.

All floor mounting bolts near the fuel tank area should be installed from the underside of the vehicle, to guard against the fuel tank being punctured in the event of a collision. This would mean not using Blind Fasteners in this area. Holes in this area should be 5/16". Ensure ample space in roof ribs and sidewall ribs for mounting screws so as not to puncture exterior roof or wall.

Do not install this product where it could interfere with deployment of air bags. Failure to comply could result in death or serious body injury.

- NOTICE -

Any modification or unintended use of this product shall immediately void all manufacturers warranties. Manufacturer disclaims all liability for injuries to persons or property resulting from any modification to, or unintended use of this product.