



**CARB PENDING**

Recommended Air Filter Cleaning Intervals: 3000 Miles.

Part # 's **Secret Weapon Intake : 307-144**

**US Patent# US 7,263,961B2**

Application : **2003-05 Dodge Neon SRT- 4**

Parts List : 1 x Weapon\*R Intake pipe. / 1 x Weapon\*R Air Filter 3" / 1 x 10mm x 12" Hose / 1 x 3"-3" Coupler / 1 x 2.5"-3" Coupler / 1 x Intake System Bracket kit / 4 x 3" Clamp/ 1x black rubber grommet, 1x Air shield, accessory

- 1 Remove bolts securing OEM air cleaner box, loosen clamps on OEM rubber intake pipe.
- 2 Remove PCV hose from OEM intake and engine.
- 3 Remove AIT sensor from OEM airbox and disconnect from wire harness and put aside.
- 4 Remove and put aside the check valve bracket.
- 5 Remove the OEM rubber intake tube, remove the OEM air cleaner box by pulling upwards.
- 6 Wipe the Turbo clean of any grease, install the 2.5"-3" coupler onto Turbo inlet, secure with OEM clamp.
- 7 Insert Weapon\*R intake pipe into the 2.5"-3" coupler, secure with clamp.
- 8 Bolt down WR pipe to OEM 10mm location on valve cover. (pic #1)
- 9 Install check valve bracket to WR pipe bracket and bolt down. (pic #2)
- 10 Install boost vacume solenoid hose to WR small intake port on tube(pic#3)
- 11 Measure the OEM PVC hose, replace with supplied 10mm hose, install from PVC port to intake pipe.
- 12 Install the grommet into bottom of WR pipe, and Insert AIT sensor into grommet and reconnect wire harness to AIT.

**Note: Secret Weapon Filter Option**

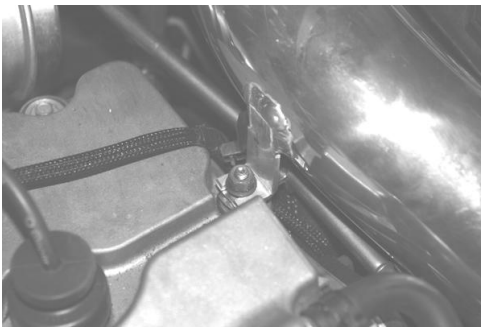
- 13 Install the 3"-3" coupler onto intake pipe, secure with supplied clamp.
- 14 Install filter assembly onto the end of MAF sensor, secure with OEM clamp.
- 15 Install U-shaped part of intake system bracket under the clamp on air filter.
- 16 Install the rubber mounting grommet to the closest hole to the Weapon\*R air filter.
- 17 Bend the straight portion of the intake system bracket to the Rubber mounting grommet.
- 18 Secure with washer and nut included in bracket kit.
- 19 Position air intake pipe for clearance, making sure no parts are touching any part of the vehicle.
- 20 Check for hood clearance, re-adjust intake tube for perfect fitment and clearances.
- 21 Place Weapon\*R CARB Sticker on a visible place in engine compartment. ( If Applicable )

**WARNING: EO# LABEL IS REQUIRED TO AID IN THE PASSING THE SMOG CHECK INSPECTION.**

Returned Products may be subject to a 25% restocking charge. **INSTALLED PRODUCTS ARE NON-REFUNDABLE !**

**Note:** Report any defective or missing parts to the authorized Weapon\*R dealer you purchased this product from. Installation does require some mechanical skills. We recommend a qualified mechanic to install this product.

**PIC#1**



**PIC#2**



**PIC#3**



**SW Intake with Aluminum shield**

