

TOYOTA & LEXUS RECOVERY POINT

INSTALLATION INSTRUCTIONS

PN: 864

WHAT'S INCLUDED:

- DRIVER SIDE RECOVERY POINT
- PASSENGER SIDE RECOVER POINT
- (6) 3/8" X 1 1/4" HEX HEAD BOLT
- (6) 3/8" Nylock NUT
- (12) 3/8" WASHERS
- (2) 8 MM X 20MM HEX HEAD BOLT
- (2) 8 MM WASHER
- (2) 12 MM X 40 MM HEX HEAD BOLT
- (2) 12 MM WASHER

TOOLS NEEDED:

- SOCKET SET:
 - Ratchet
 - 12 MM
 - 13 MM
 - 14 MM
 - 19 MM
 - 9/16"
- HAMMER
- 9/16" WRENCH
- BREAKER BAR (OPTIONAL)
- Car Jack/jack stands (OPTIONAL)



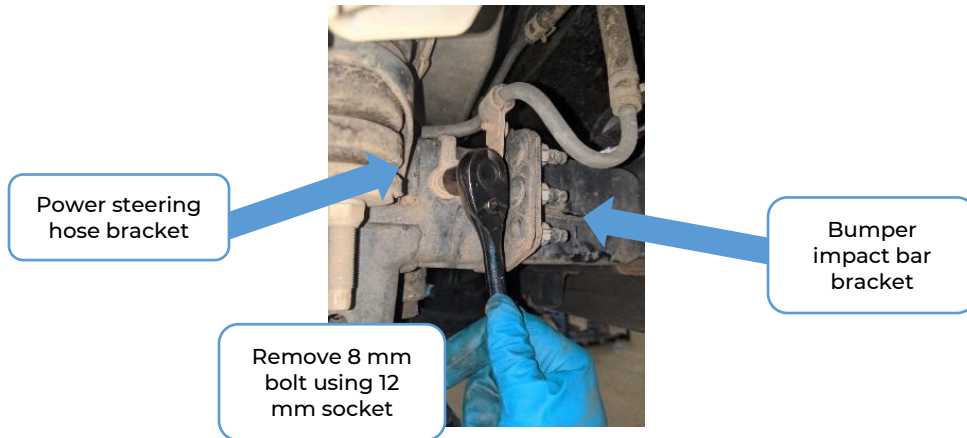
NOTE: A LIFT OR JACK STANDS IS NOT REQUIRED FOR INSTALLATION BUT IT DEFINITELY WILL HELP.

NOTE: THIS INSTRUCTION GUIDE COVERS THE INSTALLATION OF THE PASSENGER SIDE RECOVERY POINT. HOWEVER, THESE INSTRUCTIONS ARE THE SAME FOR BOTH PASSENGER AND DRIVER SIDE.

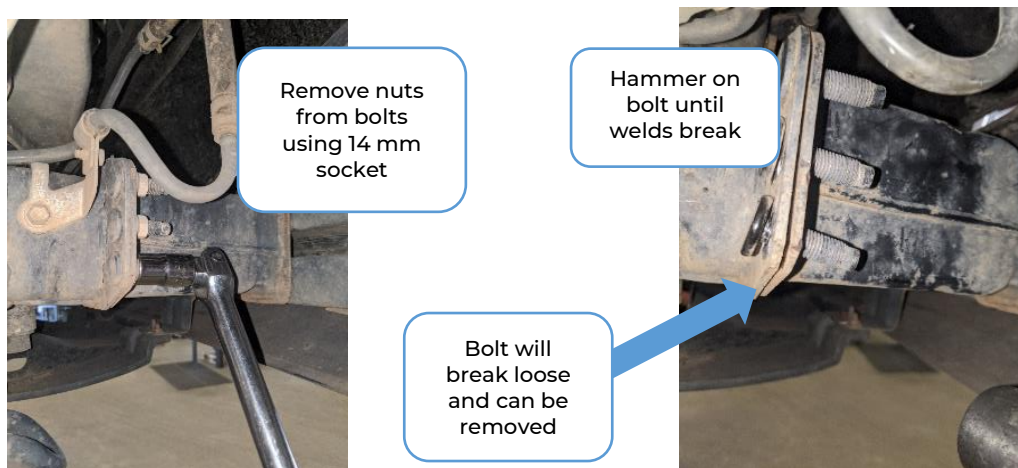
STEP 1: REMOVING BOLTS FROM POWER STEERING HOSE BRAKET AND BUMPER IMPACT BAR BRACKET

- Bolts will be removed from bracket holding power steering hose and bumper impact bar. These bolt holes will be used to mount the recovery point (refer to picture below)

1. Remove the 8 mm bolt from the power steering hose bracket.
2. Move hose and bracket out of the way. Use zip tie or bungee cord if necessary.

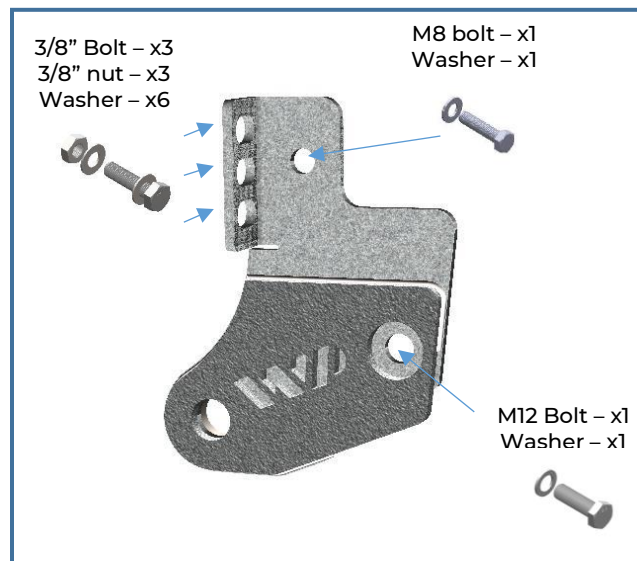


3. Remove the three 14 mm nuts from bolts in bumper impact bar bracket using ratchet or breaker Bar.
4. Bolts are fixed to back plate by small spot welds. Use a hammer to break the bolt free from their welds. These bolts will not be reused so feel free to take some anger out on them.



STEP 2: INSTALLING WARRIOR PRODUCTS RECOVERY POINT

- Refer to the following diagram for hardware locations



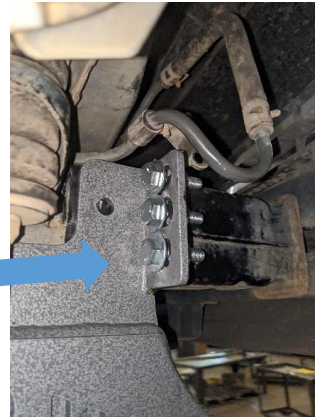
1. Insert bolts in the positions laid out in the diagram. To ensure alignment do not tighten any bolt all the way until other bolts/nuts/washers are in correct locations.
 - Note that the power steering hose bracket may cover the top 3/8 bolt (see photo).



If bracket is in the way, you can omit top bolt

Or

Opt to secure bracket in a different location



2. Begin tightening bolts, making sure to alternate between 12 mm bolt and 3/8 bolts/nuts.
3. Using the 9/16 socket and 9/16 wrench, tighten the bolts on the bumper impact bar bracket.
4. Tighten remaining bolts until secure

Use 9/16 socket and 9/16 wrench to tighten 3/8 bolts



Alternate between bolts when tightening

Step 3: Save somebody stuck

1. Friend stuck in sand or mud? Pull them out with recovery point toe hole or D-Ring shackle bolt (not included)
2. Make fun of friend for getting stuck.

