

JEEP JL/JLU WINDSHIELD COWL COVER

INSTALLATION INSTRUCTIONS

PN: 6920/6921

WHAT'S INCLUDED:

- 6920 JEEP JL/JLU WINDSHIELD COWL COVER
 - 6920 cowl cover
 - (12) 3/16" pop rivets
- 6921 JEEP JL/JLU WINDSHIELD COWL COVER W/ FLUID NOZZLE RELOCATION
 - 6921 cowl cover
 - (12) 3/16" pop rivets
 - (2) adjustable windshield wiper fluid nozzles
 - (1) hose splitter
 - hose

TOOLS NEEDED:

- Jeep toolkit (included with vehicle)
 - M15 socket
 - Ratchet
- Flathead screwdriver/putty knife
- Drill and 3/16" drill bit
- Rivet gun

Additional tools needed for 6921:

- wire cutter/knife
- Thumbtack/small paperclip

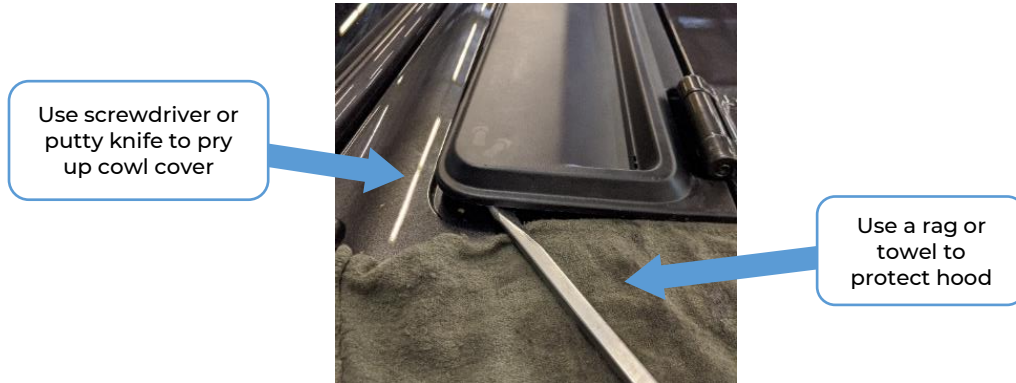


STEP 1: REMOVING WINDSHIELD WIPERS AND FACTORY COWL COVER

1. Uncover windshield wiper retaining nuts by prying plastic cap away from base with flathead screwdriver or putty knife.
2. Using the M15 socket and ratchet remove the nut from wiper bolt.



3. Remove wiper by pulling up and away from windshield.
 - Note: it may require lifting wiper arm and tilting back and forth to loosen.
 - Remember location of wipers on windshield to help with reinstallation.
4. There are 12 clips holding the cowl cover and cowl together. To remove factory cowl cover, pry up the edge using the flathead screwdriver or putty knife
5. Once the first clip is detached, gently lift cowl to unhook the remaining clips.

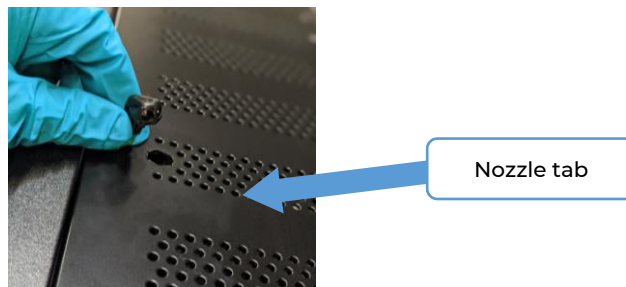


****Note: if you purchased 6920 skip to step 4****

STEP 2: RELOCATING WINDSHIELD WIPER WASHER NOZZLES (6921 ONLY)

INSTALLING NEW NOZZLES AND HOSE

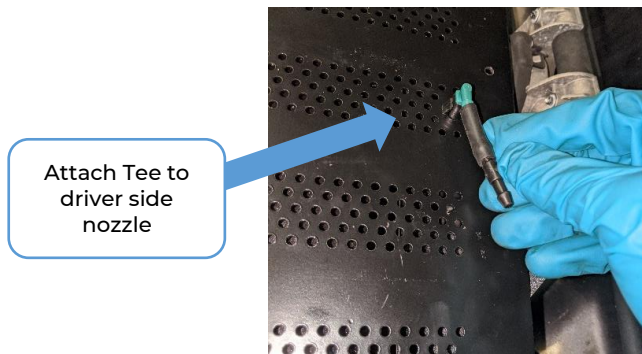
1. Insert the two included replacement wiper fluid nozzles in nozzle tabs in cowl cover. Nozzle will click into place



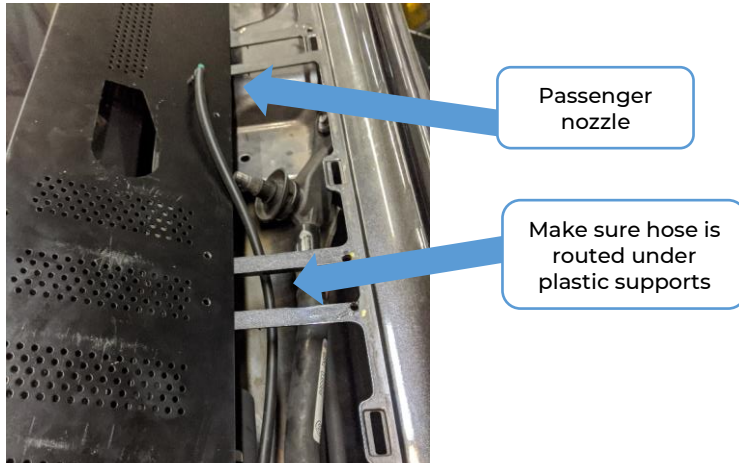
2. Cut off about a 1" section of included windshield fluid hose
3. Attach hose to one end of tee and other end to driver side nozzle



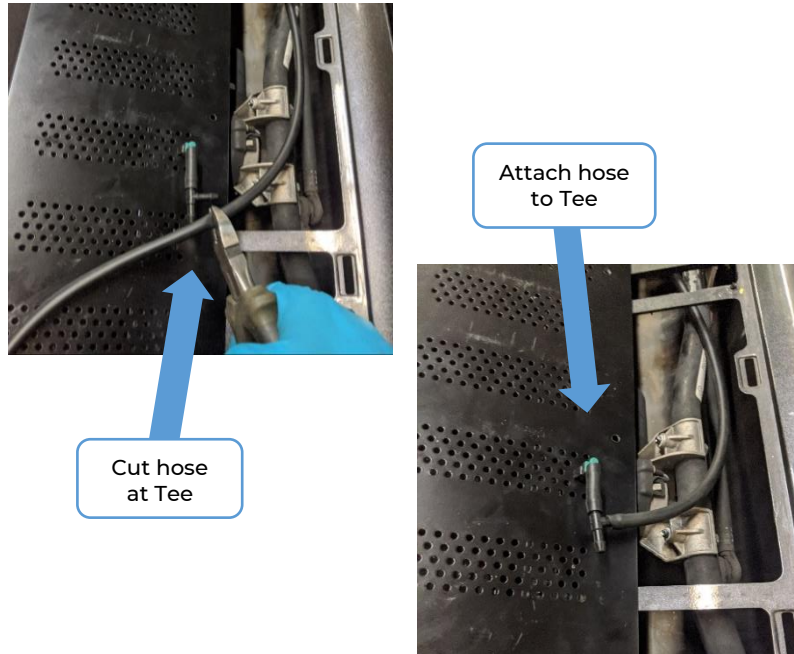
Cut about an inch off and attach to Tee



4. Cut hose where it meets the Tee and connect hose from passenger nozzle to driver nozzle.
5. With cowl cover tilted up, connect included hose to passenger side nozzle. Be sure that hose is routed under cross supports.



6. Rout hose from passenger nozzle to driver nozzle. Cut hose at tee making sure there is enough slack for press fit to be secured.



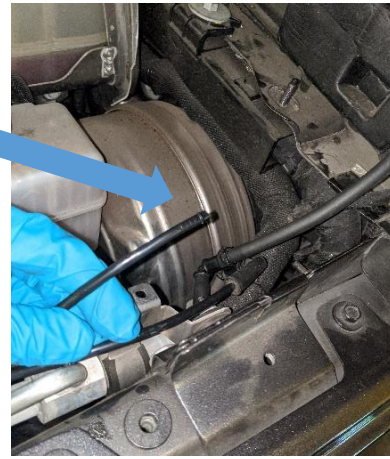
STEP 3: REROUTING HOSE FROM FACTORY NOZZLES TO NEW NOZZLES.

DISCONNECT FLUID PUMP HOSE FROM FACTORY NOZZLES

1. With the hood open, locate washer fluid hose. This can be done by tracing the hose from the underside of the hood.
2. There is a coupling near the firewall on the driver side (see photo). Disconnect the hose that runs to the fluid reservoir from the coupling.

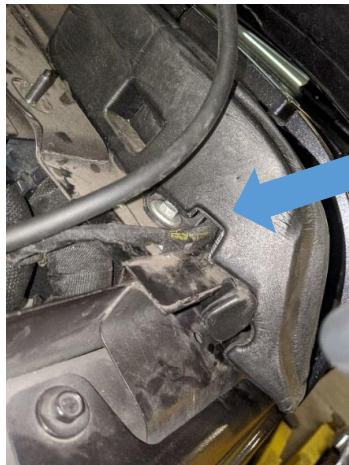


Disconnect factory hose from coupling



ROUT NEW HOSE INTO WINDSHIELD COWL.

- 3. There is a gap in the foam where wire is routed into the cowl (see photo) use this gap to route the new fluid hose to the cowl



Gap in foam. Rout new hose through here



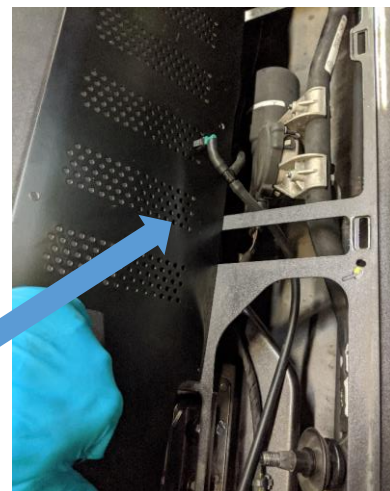
New hose routed next to wire through foam

- 4. Connect hose to other side of Tee making sure to rout under cross support

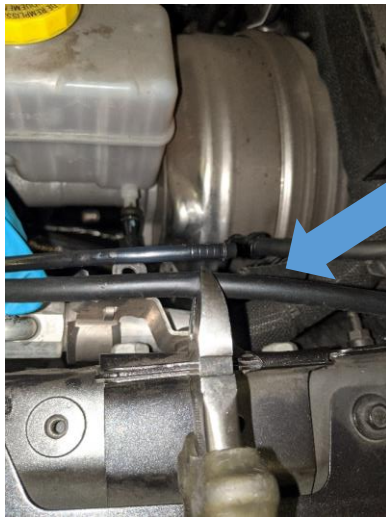


Once hose is pushed through enough it can be pulled from other side

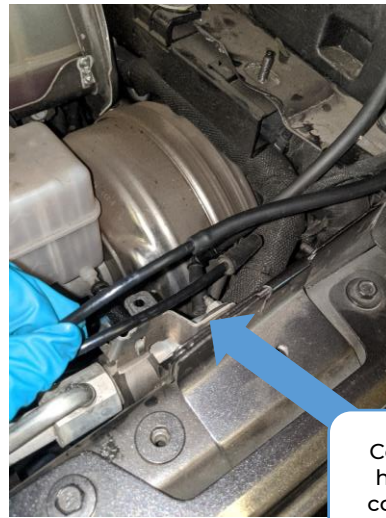
Rout hose under plastic supports and connect to driver nozzle



5. After hose is connected to nozzle, line up with coupling from fluid pump hose and cut off extra



Make sure there is enough slack to connect to press fitting



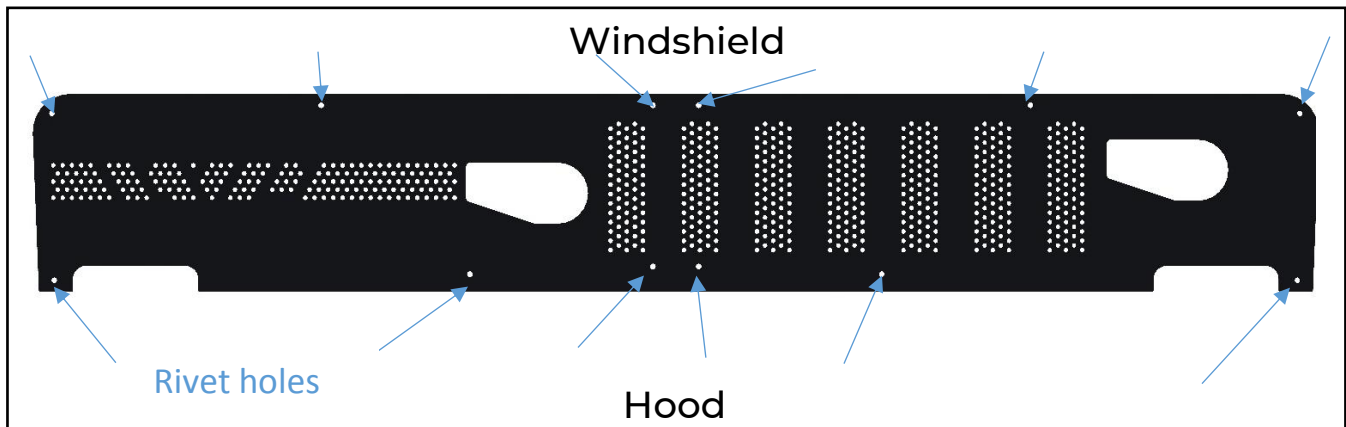
Connect hose to coupling

STEP 4: INSTALLING NEW WARRIOR PRODUCTS COWL COVER

- Rivet holes are already drilled out in cowl cover. You will need to drill holes in windshield cowl for installation of rivets.

DRILLING HOLES FOR 3/16" RIVETS

1. Place the new cowl cover where factory cowl cover used to sit. See photo for orientation.



2. Make sure edge of cowl cover lines up with edge of cowl on both sides
3. With 3/16" bit and drill, drill through holes in cowl cover and into plastic cowl underneath.
 - Optional: use marker to mark hole locations, remove cowl cover and drill at marks.



Line up cowl cover with edge

Once lined up, drill through holes in cowl



4. With a rivet gun install the 12 provided 3/16" rivets in drilled out holes. It is recommended to attach rivets by starting from one end and then working down in a line to the other end. This will prevent warping.
 - However, to ensure proper hole alignment, rivets, may be installed at outer edges first, and then from end to end.



Install 12 provided rivets in holes

Start from one end and work towards the other



STEP 5: REINSTALLING WINDSHIELD WIPERS.

1. Place wiper base into wiper bolts. Make sure wipers are in same position on the windshield as when removed. Again, it may require tilting back and forth to get wiper base to seat correctly.
2. Reinstall retaining nut and plastic bolt cap.

STEP 6: ADJUSTING WINDSHIELD WIPER NOZZLES (6921 ONLY)

1. With thumbtack or safety pin adjust individual sprayers to desired locations.
2. Test and adjust as needed

Use thumbtack to adjust sprayers

