



## 2005 – 2015 Toyota Tacoma Rear 2” Receiver Bumper w/ D-Ring Mounts

P/N 4560

### Kit Contents:

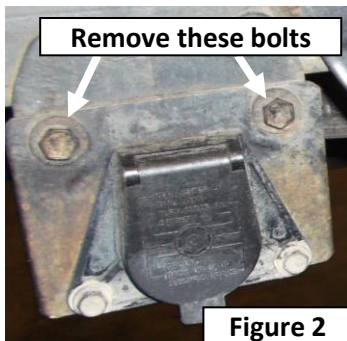
<u>Item</u>	<u>Qty</u>	<u>Item</u>	<u>Qty</u>
Rear Bumper	1	Filler Plate / Light mount Bracket	2
M12 x 1.25 x 40mm Hex Bolt	4	¼” x ¾” Carriage Bolt	4
Large M12 Flat Washer	4	¼” SAE Washer	8
Lock Washer for M12 Hex Bolt	4	¼” Nyloc Nut	8
Rubber Trim	36”	¼” x ¾” Hex Bolt	4
Rear Storage Box Cover	1	Plastic License Plate Nut	4
Rear Storage Box Lock Mechanism	1	#14 x 1” Self-Tapping Screw	4

### Installation Instructions:

1. Before you start, you must remove the factory rear bumper. These instructions cover the removal of the bumper and OEM tow package (if equipped) together as a single assembly. If you prefer, you may remove the two items separately. **(Figure 1)**
2. Begin by removing lights from both sides of the license plate. From behind the bumper locate each light. Twist 90 degrees and pull to remove the bulb and socket from the housing.



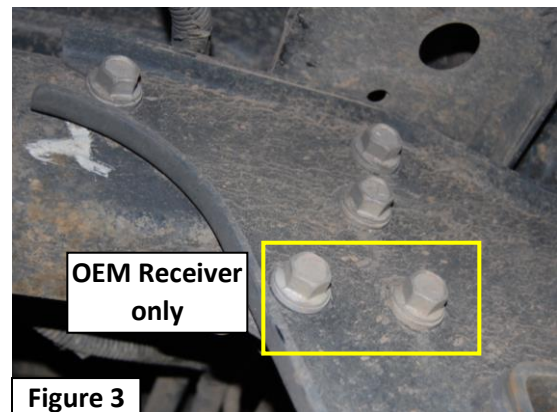
**Figure 1**



**Figure 2**

3. Disconnect the trailer connector plug and mounting plate (if applicable) by removing the two bolts at the top of the plate that attach the plate to the OEM Receiver cross beam **(Figure 2)**. If you find that you need to disconnect the wiring harness from the plug, the factory connection will have a plastic plug with a retainer. The retainer must “swing” open approximately 90 degrees to release the connection. Tuck the harness and connector plug safely to the side so that it does not get damaged during the install.

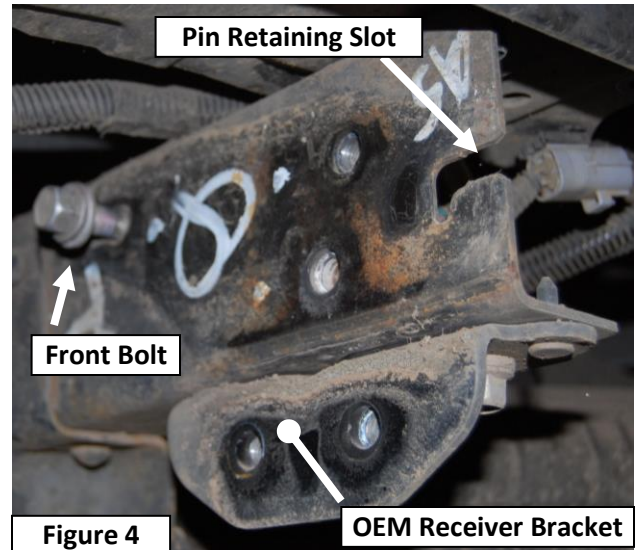
4. Use a 17mm socket to remove the bolts on either side that attach the bumper frame mount to the frame (keep these bolts, you will re-use them later). Do not fully remove the forward most bolt, it only needs to be loosened to allow the bumper to slide out the rear and will help position the Warrior bumper during installation. There will be only three bolts per side without the OEM Receiver, or five bolts per side with the OEM Receiver **(Figure 3)**.



**Figure 3**



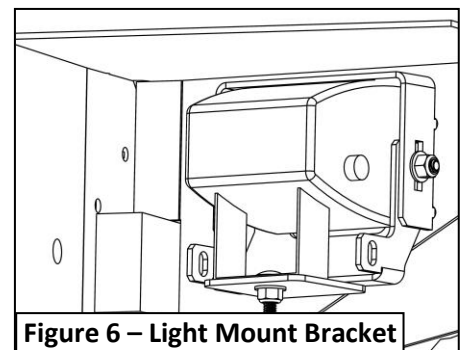
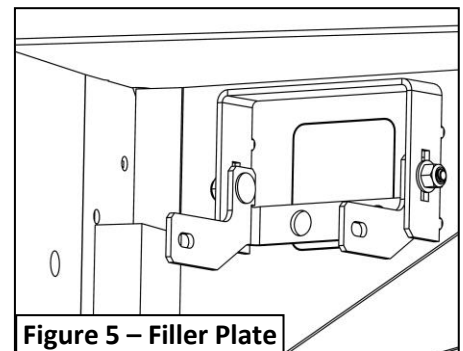
5. To remove the factory bumper an extra set of hands will be helpful. It is a good idea to tape off the truck around the rear bumper with Duct tape or similar to avoid any potential scratches while removing the rear bumper. To remove the bumper from the truck, first lift, then carefully pull it away from the vehicle evenly. The bumper must be lifted so that an indexing pin will move out of a retaining slot in the frame (see the image to the right). The bumper may be a bit stubborn to remove and may require that you wiggle it a bit to work it out.
6. After the bumper (and Tow Receiver) have been separated from the truck, finish by removing both of the OEM Receiver Brackets attached to the bottom of the frame by two bolts (when applicable). Leave the Front Bolts in place (**Figure 4**).



7. Install Filler Plates / Light Mount Brackets into your Warrior Products bumper with the supplied ¼" carriage bolts and associated hardware. (This can be done with bumper installed, but it is easier to do it at this time).

**NOTE: The bracket orientation will differ depending on installation as Filler Plate, or as Light Mount Bracket. See Figures 3 and 4.**

- a. If you are installing the Filler Plate without LED's, simply orient the bracket as shown in **Figure 5**, with the square portion filling the square cutout in the bumper.
  - i. Insert two ¼" Carriage bolts (one per side) through the Filler Plate bracket and the bumper mount bracket.
  - ii. Place a ¼" washer and ¼" Nyloc nut on each Carriage bolt.
  - iii. Visually align the plate and tighten hardware.
  - iv. Repeat for the other side.
- b. If you have aftermarket LED lights that you wish to use, Your Light Mount Brackets will be oriented as shown in **Figure 6**.
  - i. You must first determine where to drill the hole in the plate to mount your lights. Place the Light Mount Bracket into position, and hold your light in place. Determine how far back on the plate to drill your mounting hole so that you will have clearance to mount your light without interference with the bumper skin.
  - ii. Place a mark centered between the arms of the bracket at your desired depth away from the bumper skin. Do this for both Light Mount Brackets.





- iii. Center punch the marks you have made and drill holes of the desired diameter in the mounting brackets (start with a small pilot hole...1/8" – 3/16" drill bit).
- iv. Next, before bolting the lights onto the bracket, install the bracket into the bumper.
- v. Insert two 1/4" Carriage bolts (one per side) through the Filler Plate bracket and the bumper mount bracket with the rounded heads facing in toward where the light will be.
- vi. Place a 1/4" washer and 1/4" Nyloc nut on each Carriage bolt.
- vii. Adjust the desired height of the Light Mount Bracket based on the size of your lights so that they will be centered in the bumper opening. The mounts have a slot to allow this adjustment.
- viii. Tighten the 1/4" hardware to secure the Light Mount Bracket.
- ix. Repeat steps iv. through viii. for the second side.
- x. Mount your lights in the holes that you have drilled and wire as desired.

8. Carefully position your new Warrior Products bumper on your truck, this is also where an extra set of hands will be very helpful. Slide the open slots of the frame mounting plates over the existing partially threaded Front Bolts that were left in during the removal of the OEM bumper. While holding the bumper in place, start at least one additional side bolt (reuse the factory bolts) on each side to hold the bumper in place. **USE CAUTION!!! MAKE SURE TO NOT SCRATCH OR DAMAGE YOUR VEHICLES PAINT WHILE PLACING THE BUMPER.**

9. Loosely start the rest of the mounting bolts attaching the bumper frame brackets to the frame. Re-use the OEM mounting bolts. We have included four M12 bolts to use for the mounting points on the bottom of the frame in case you did not initially have an OEM Receiver to remove. On each side of the truck, you will have three bolts attaching to the side of the frame, and two bolts attaching to the bottom of the frame.

10. Once all the bolts are loosely started, begin tightening the bottom frame mount bolts first. It is best to tighten them gradually from side-to-side for an even mount. Before finally tightening the bolts, verify that the placement of the bumper from front-to-back on each side is even and acceptable.

11. Now tighten the remaining side frame mount bolts. Run them all in until just before tight. Tighten each bolt with a wrench, but alternate from one side to the other as you tighten to make sure the attachment is secured evenly. Continue visually checking the alignment of the bumper to make sure that it stays positioned correctly. You may be able to fine tune the position of the bumper based on the order in which you tighten the bolts.

12. A tab to mount the OEM trailer plug and mounting plate is located on the Frame Mount of the bumper.

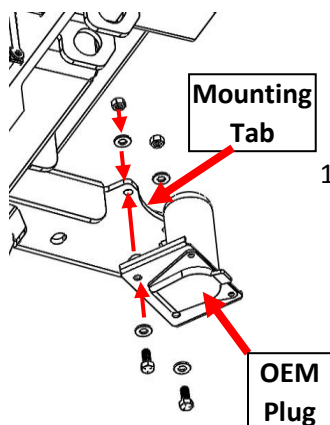
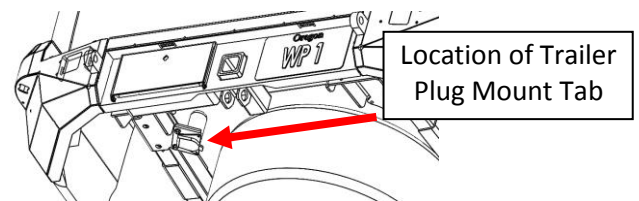


Figure 7

Your preference and/or actual wiring components may lead you to choose an alternate method.



13. The mounting tab has two holes that can be used to attach the OEM trailer plug and plate. Use two (2) 1/4" x 3/4" Hex bolts, four (4) 1/4" SAE washers, and two (2) 1/4" Nyloc nuts to secure the plate to the Frame Mount as pictured in **Figure 7**. Note that this installation will change the orientation of the plug so that the socket points down toward the ground. This is to protect the plug while not being used and retain the departure angle clearance of your Warrior Products rear bumper. When plugging a trailer pigtail into the relocated OEM trailer plug, note the resulting clearance and take care to not damage the plug/pigtail.



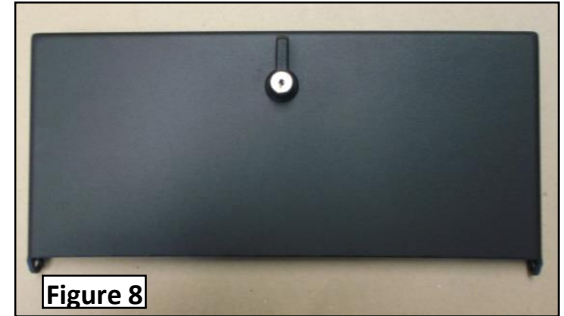
14. Assemble your Rear Storage Box Cover and Locking Mechanism.

- a. Slide the supplied round gasket over the threads of the lock and place against the mounting flange.
- b. From the outside of the Storage Box Cover, insert the lock through the hole punched in the top center. Orient the Locking Mechanism so that the Lever is pointing toward the top of the cover (**Figure 8**).



**Figure 9**

- c. On the opposite side of the Storage Box Cover, thread the supplied nut onto the lock core and tighten with a  $\frac{3}{4}$ " socket or wrench.
- d. Remove the cam retaining screw on the end of the lock core.
- e. Place the cam onto the lock, also point it toward the top of the cover (the same direction as the lever on the outside of the cover). The jog in the cam should jog AWAY from the cover (**Figure 9**).
- f. Replace and tighten the cam retaining screw.



**Figure 8**

15. Place rubber trim around the protruding edge of the storage box. Start at one end of the trim and work it around until you have come back to the starting end of the trim. Cut the rubber trim to length.

**NOTE: Cut slightly more than is necessary. Trim will compress to fit. You can always cut off additional trim if it does not fit perfectly with your original cut.**

16. Align the 2 tabs on the bottom of the storage box cover with the two exposed tabs in the bumper around the lower corners of the storage box.
17. Insert a  $\frac{1}{4}$ " hex bolt through the holes in the tabs, from the outside of each side.
18. Add  $\frac{1}{4}$ " Nyloc nut to the bolt after it has passed through the tabs.
19. Tighten to snug and then slightly loosen so the rear storage box cover can open and close freely.
20. Unlock the Locking Mechanism with the key provided and rotate the lever counter-clockwise. Close the cover completely, and rotate the locking lever 90 degrees clockwise to latch the cover closed.
21. Cut the sockets off the end of your license plate light wires, and splice each set of wires to the LED lights mounted in the bumper above the storage box and license plate locations. The white wire of the LED lights is positive. The LED lights are polarity sensitive, meaning that they will only work if your supply power is connected to the white wire. If either of your LED lights do not work with the headlight switch turned on, switch the two wire connections for that light.  
**NOTE: You may want to verify the LED light for correct polarity before finalizing your spliced connections.**
22. Press the [4] square plastic license plate nuts into the 4 square holes in the bumper next to the Storage box. Press them until they "snap" into place.
23. Attach your license plate to the bumper by screwing the four provided #14 x 1" screws through the holes in the license plate and into the four plastic license plate nuts that you just installed.
24. Installation Complete.