



Protecting Your Adventure Lifestyle

Warrior, Inc.  
16850 SW Upper Boones Ferry Rd  
Ste. A  
Durham, OR 97224  
Phone: (888) 220-6861  
Fax: (503) 692-0364  
[sales@warriorproducts.com](mailto:sales@warriorproducts.com)  
[www.warriorproducts.com](http://www.warriorproducts.com)

---

## **91620, 91625, 91630** **Spare Tire Spacer** **INSTALLATION INSTRUCTIONS**

**IMPORTANT:** Due to the thin metal construction of JK Wranglers 2007 and later, there is a risk of damaging your tailgate when moving to a larger tire 33" or taller. It has been the experience of Warrior that the tailgate issue hasn't occurred in tires less than 35" tall. We are currently rating the JK tailgate to carry up to a 33" x12.50" tire size with our spare tire spacer. If you install one of our tailgate covers (part #920D-1, S920D-1, or 920D-1PC) we increase the rating to a 35" x 12.50" tire size. We have found these sizes to be safe as rated.

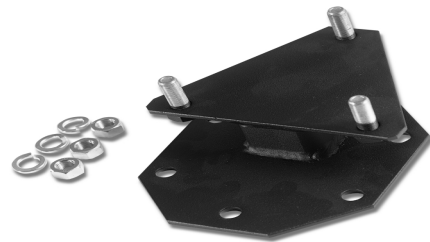
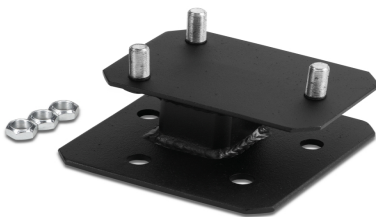
### **INSTALLATION:**

1. Remove the 3 lug nuts holding your factory spare tire to the spare tire carrier.
2. Remove your factory spare tire.
3. At this time you need to cut off the tire rest to make room to mount the 91635 Tire Spacer.
4. Estimate which direction your new & larger spare tire needs to go. Remember that by rotating the spacer you can move it up, down, left or right.
5. Slide the holes of the spacer over the studs of the factory tire carrier, locating it in the direction you decided to space your tire.



6. Use the supplied nuts (and washers in some kits) to attach the tire carrier to the spacer.
7. Slide your new spare tire onto the studs of the spare tire spacer, and re-attach using your lugnuts removed in step #1.

### **INSTALLATION IS COMPLETE**



**QUALITY** • **INTEGRITY** • **INNOVATION** • **SERVICE**