



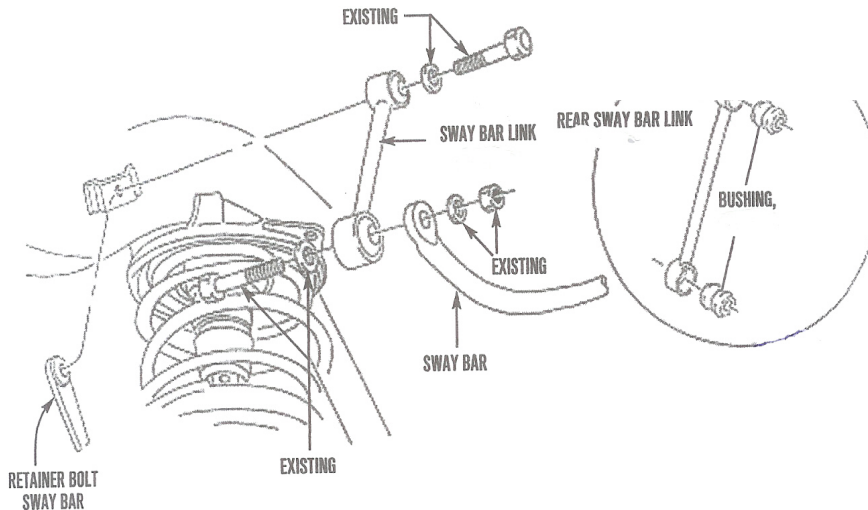
Protecting Your Adventure Lifestyle

Warrior Products, Inc.  
16850 SW Upper Boones Ferry Rd  
Ste. A  
Durham, OR 97224  
Phone (888) 220-6861  
Fax (503) 692-0364  
sales@warriorproducts.com

## **800010** **REAR SWAY BAR LINK –JEEP TJ** **INSTALLATION INSTRUCTIONS**

**Please read instructions before beginning installation.** Check the kit hardware against the parts list. Be sure you have all needed parts and know where they go.

1. Assemble rear sway bar end link using the bushings provided. Refer to the illustration shown below.
2. When reinstalling the existing stabilizer bar you must ensure that the bar is centered, equally spaced, over both sides of the differential housing.
3. Fasten using existing hardware.
4. Torque to 40 ft./lbs.



### **MAINTENANCE INFORMATION**

It is the ultimate buyers responsibility to have all bolts/nuts checked for tightness after the first 100 miles. After that, check them every 1000 miles. Wheel alignment steering system, suspension and drive line systems must be inspected by a qualified professional mechanic at least every 3000 miles.

Warrior, Inc. Technical Assistance - 888-220-6861

### **PARTS LIST**

(2) 700029

**QUALITY • INTEGRITY • INNOVATION • SERVICE**