



Protecting Your Adventure Lifestyle

---

---

## 07-15 JK 4DR SIDE CAGE NET 40600

**Note:** This side cage netting kit covers the open sides of the rear cargo area. For overhead coverage of the rear seats and cargo area, Warrior also offers the 40500 Center Cage Net kit. A 40800 Basic Cargo Cover which spans the top of the tub is also available.

### Tools needed

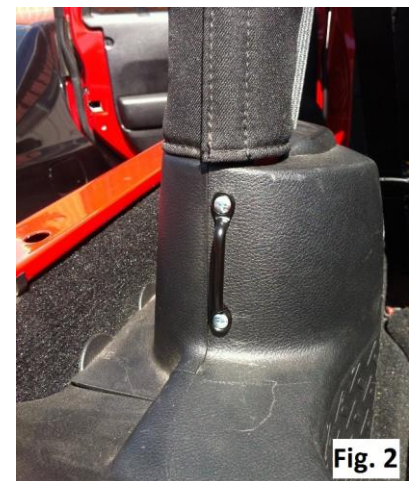
Cordless Drill  
7/64" Drill Bit  
Phillips Screwdriver

### Supplied Parts

(2) Side Cage Net  
(4) Footman Loop  
(8) #10 x 1/2" Oval Head Sheet Metal Screw

### Installation:

1. There are (4) footman loops that need to be installed onto the Jeep. The first pair are to be mounted to the forward edge of the tub rail, one on either side. **(Fig. 1)** Hold the footman loop against the tub rail and make a mark through the attachment points. Utilize a center punch then drill out the marks with a 7/64<sup>th</sup> drill bit. Use the provided sheet metal screws to affix the footman loops to the tub rail. The second pair are mounted to either the plastic roll bar surround bases ('11-'13 JKs) or the roll bars themselves ('07-'10 JKs). **(Fig. 2)**
2. Locate the driver side Corner Cage Net and position it so the WP logo is facing outward. Loosely attach the forward most upper and lower loop attachments then proceed with the rear most footman loop attachment.
3. The 45 degree corner strap wraps around the outside of the roll bar and buckles together underneath the rear cross bar. Wrap the remaining strap around the diagonal bar and snug up all the straps evenly. Repeat steps 2 & 3 for the passenger side.



**THANK YOU FOR PURCHASING WARRIOR PRODUCTS**