



Protecting Your Adventure Lifestyle

3830 FJ Cruiser Platform Half Rack

Kit Contents:

<u>Item</u>	<u>Qty</u>	<u>Item</u>	<u>Qty</u>
Main Platform	1	M8 SS Button head cap screw	8
Mount – LEFT	1	5/16" Lockwasher	8
Mount – RIGHT	1	5/16" Flatwasher	8
3/8" x 1" Hex Bolt	8	3/8" Nyloc Nut	8
3/8" Flatwasher	16		

Installation Instructions:

1. Locate the 4 rear-most mounting points on the roof of the vehicle by removing the existing roof rack, or by removing the covers in the roof trim.
2. Remove the 2 bolts and the bracket from each mounting point, leaving only the channel with 2 plastic sleeves remaining (Figure 1). Loosen BOTH bolts before you remove either bolt. Do not remove a bolt without first loosening the bolt next to it. Failing to follow this procedure may cause damage to the brackets inside the roof.
3. On each side of the vehicle, attach a large mount to the rear two mounting points on each side of the roof with the upper tabs of the bracket facing inboard, toward the center of the vehicle roof (as shown in Figure 2). Place the mounting bracket into the channel so that the plastic sleeves are positioned in the holes of the mount. Attach the mounts with the supplied M8 SS Button Head cap screws, lock washers, and 5/16" flatwashers. Fully tighten all 8 mounting screws.

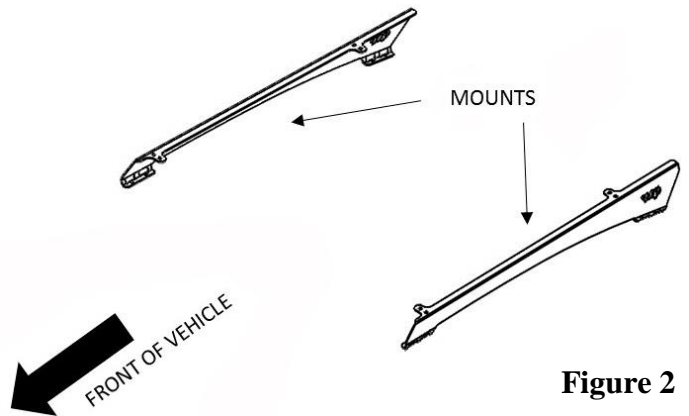
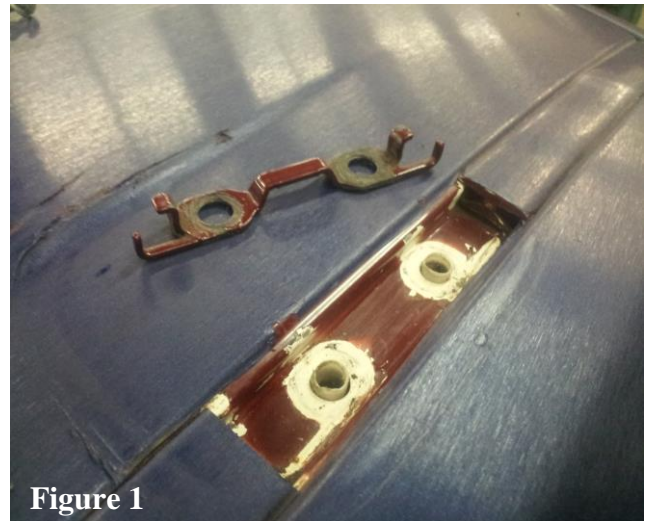


Figure 2

(Optional: You may want to apply some silicon or other gasket material around the plastic sleeves in the roof to ensure a water proof installation.)

***NOTE:** If your mounting brackets do not fully seat into the mounting channel you may have to slide the trim, or cut it with a hack saw to provide clearance.



Protecting Your Adventure Lifestyle

- Next, with both mounting brackets positioned and fully tightened, carefully place the main platform on top of the mounting brackets with the curved end forward, and the corner plates and mounting plate surfaces on the bottom side of the rack. (Note: this will be much easier with the help of a friend)
- Loosely install all (8) 3/8" x 1" Hex bolts, 3/8" flatwashers, and 3/8" nyloc nuts to attach the main platform to the mounting brackets. You may have to flex the mounting brackets inward or outward to get the holes to align properly. Due to the taper of the FJ Cruiser roof and mounting point locations, the bolts must be placed in the appropriate mounting holes. Please refer to Figure 3 (below) for the correct mounting bolt placement.
- Fully tighten all hardware to secure the rack in place.

