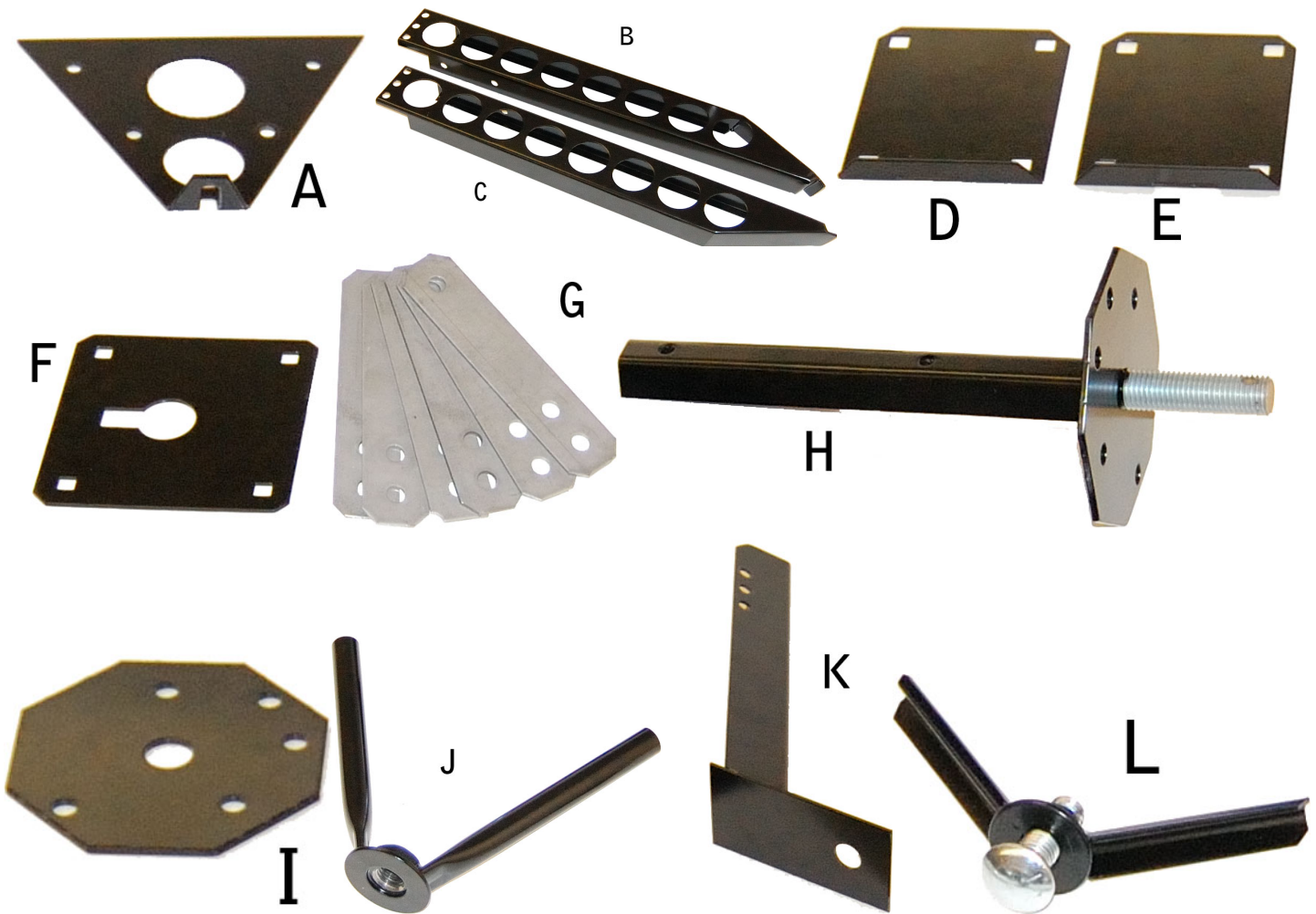


201 & 202 Baja Tire Carrier INSTALLATION INSTRUCTIONS

NOTE: This product is designed to be installed universally into any truck bed or flat surface

Parts List

A – Upper Leg Support Plate	B/C – Support Legs (left/right)	D/E – Support Leg Mount Plates	F- Main Leg Mount Plate
G – Under Bed Reinforcing Plates	H – Tire Support Shaft	I – Wheel Grip Plate	J – Main Handle
K – Main Leg	L – Release Handle		
Hardware List			
Qty 24 – 3/8" Locking Nut	Qty 1 – 3/8" x 2" Allen Bolt	Qty 2 – 7/16" Nylock Nut	Qty 2 – 7/16" x " Socket Allen Bolt
Qty 11 – 3/8" x 1" Allen Bolt	Qty 12 – 3/8" x 2" Carriage Bolt	Qty 1 – 5/8" x 2" Carriage Bolt	



Installation will begin on page 2

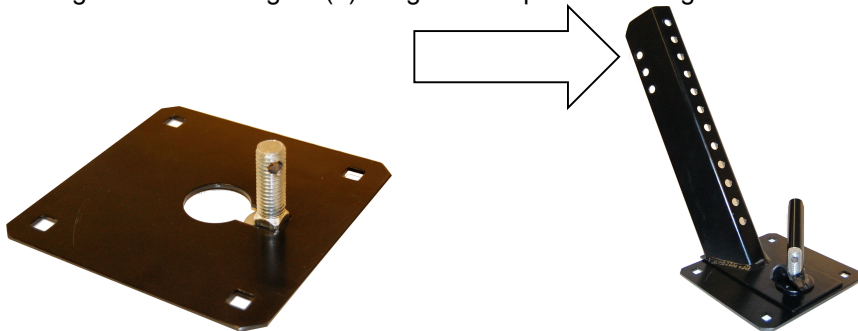


Protecting Your Adventure Lifestyle

Warrior Products, Inc.
16850 SW Upper Boones Ferry Rd
Ste. A
Durham, OR 97224
Phone (888) 220-6861
Fax (503) 692-0364
sales@warriorproducts.com

PRE-ASSEMBLY: The first portion of this assembly can be done on a workbench. You will not need to be at your vehicle to complete this section.

1. Begin by locating the main leg mount plate (F) and the main leg (K). Slide the 5/8" carriage bolt through the square portion of the hole in part F so that the carriage bolt is pointing straight up. Set the main leg (K) over the carriage bolt. Use wingnut (L) to tighten the plate to the leg. See illustration.



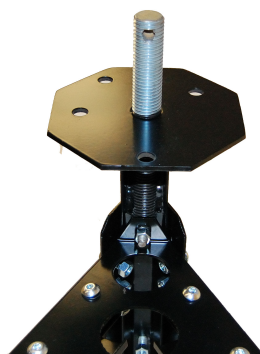
2. Next, the support legs (B/C) will be bolted to the main leg (K). There are three holes near the top of the main leg that these will bolt to. The support legs should sit inside of the main leg. Use six of your 1" allen bolts and lock nuts to attach the supports to the main. Leave the bolts loose, you cannot tighten the entire assembly until all parts are together at the end of this pre-assembly.



3. Next, locate the upper leg support plate (A). This will bolt onto the top of the support legs using four of the 1" allen head bolts and lock nuts. Make sure when you install it that the bent tab at the top points up. Again, leave bolts loose until final assembly.



4. Install the tire support shaft (H) onto the assembly. This piece will slide down the inside of the main leg until the top hole in the threaded portion lines up with the top hole in the main leg. Use your 2" long allen bolt to bolt thru the main leg, the tire support shaft, and the vertical tab in the support leg top plate. Use your remaining 1" allen bolt through the bottom hole in the main leg where the tire support shaft aligns with it.



QUALITY • **INTEGRITY** • **INNOVATION** • **SERVICE**



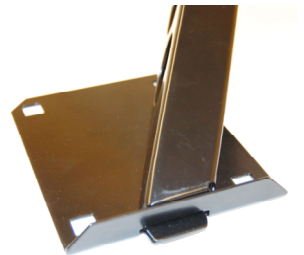
Protecting Your Adventure Lifestyle

Warrior Products, Inc.
16850 SW Upper Boones Ferry Rd
Ste. A
Durham, OR 97224
Phone (888) 220-6861
Fax (503) 692-0364
sales@warriorproducts.com

5. Finish the pre-assembly by tightening all 6 bolts/nuts that you installed in steps 1 through 4. Be sure that all bolts are tight and proceed to the next step in your instructions.

FINAL ASSEMBLY & INSTALLATION: This portion of the installation involves installing the tire carrier into your vehicle. The only specialty tools needed for this portion of the installation excluding basic hand tools are a drill, and a 13/32" drill bit. You may also need a smaller " " drill bit for drilling a pilot hole, and it is a good idea to have a hammer and center punch to center punch the holes to prevent drill bit wander.

1. Begin by choosing your location for the carrier in your truck bed or other installation surface. Note the area around where the legs and mount plates will land and be sure that there is nothing on the underside of the bed that will interfere with the install. You should also center it in between the ribs in the bed so that the carriage bolts sits down between the ribs in the main leg mount plate. If your truck bed's ribs are deep enough, you should be able to slide the carriage bolt in and out so that it doesn't have to be left in when the tire carrier is uninstalled.
2. With your location determined. Place the pre-assembled tire carrier into the bed in the spot it will be located in. Be sure to take your time to center it on the main leg as this will be the first leg drilled and mounted.
3. Mark the 4 holes in the main leg mounting plate for drilling. Move the carrier aside, center punch your marks, and drill to 13/32".
4. Unscrew the small wing nut holding the main leg to the main leg mounting plate on your tire carrier and separate the plate from the leg.
5. Place the main leg mounting plate into place over the 4 holes drilled to mount it, and with the carriage bolt in place just as it was in step 1 of pre-assembly, bolt the plate to the bed using four of your 2" long carriage bolts. On the underside of the bed, you will use two of the under bed reinforcing plates (G) as backing plates. Slide those onto the carriage bolts, then attach locking nuts to the bolts and tighten.
6. You should now have the main leg mount plate bolted to the bed securely. Slide the main leg back over the carriage bolt, and use the small wing nut again to attach it. Be sure the carrier is straight in the bed and tighten the wing nut securely.
7. Locate the support leg mount plates (D/E). These are formed in a left/right configuration, so you will notice that the slots for the support leg are offset. Arrange these to the legs so that the slot is closer to the outside edge. This will determine which is left and which is right. Slide the plates under the support legs so that the tab on the end of the support legs slides into the slots in the mount plates. Make sure they are slid into place all the way and mark the 4 holes in each plate for drilling.



8. Remove the tire carrier and support leg mount plates again, and drill the 8 holes to mount the two plates. Bolt them into place in the same fashion as the main leg mount plate; use eight of your 2" long carriage bolts from the top, use four of the under bed reinforcing plates (G) as backing plates, and tighten with locking nuts.
9. You should now have 3 mounting plates (D, E, F) bolted securely into your truck bed.
10. Slide the tabs of the support legs on your carrier into the slots on the support leg mounting plates. Lower the main leg onto the main leg mounting plate and use the small wing nut (L) to secure it into place. You can now lock the carrier into the bed by placing a padlock thru the hole in the stud that wing nut (L) attaches to.
11. This completes installing the carrier to the vehicle. Proceed to the next section for instructions on mounting your tire to the carrier.

QUALITY



INTEGRITY



INNOVATION



SERVICE



Protecting Your Adventure Lifestyle

Warrior Products, Inc.
16850 SW Upper Boones Ferry Rd
Ste. A
Durham, OR 97224
Phone (888) 220-6861
Fax (503) 692-0364
sales@warriorproducts.com

TIRE MOUNTING

1. The top of the tire support bar has an octagon shaped plate with 4 holes. In the bottom hole. These holes are to match your wheels bolt patterns.
2. Start by placing one of your 7/16" allen socket bolts in the very bottom hole. Install a nylock nut on the bottom side and tighten.
3. Install your wheel over the large stud on the support bar, and align one of your lug nut holes with the socket bolt you just installed.
4. Rotate the wheel slightly until you find which additional hole in the plate lines up with your lug nut holes in your wheel. Remove the wheel and place your second 7/16" allen sock bolt in that hole. Again, place a nylock nut on the underside and tighten.
5. Now put your wheel/tire back into place so that the main threaded post is in the center hub, and the allen socket bolts are lined up inside of your lug nut holes.
6. Install wheel grip plate (I) over the threaded stud so that it sits inside the center of your wheel
7. Thread main handle (J) onto the tire support bar and tighten wheel to hold it securely in place.
8. You have now completed the installation of your spare tire carrier. Finish up by re-checking that all bolts are tight, and secure your tire to the carrier by adding a padlock thru the hole in the threaded portion of the tire support bar.

If you need further assistance installing your product, please contact us by email at techsupport@warriorproducts.com or call us at (888) 220-6861. For more accessories visit www.warriorproducts.com

THANK YOU FOR PURCHASING WARRIOR PRODUCTS

QUALITY • INTEGRITY • INNOVATION • SERVICE