



INSTALLATION INSTRUCTIONS REAR BUMPER FOR TIRE CARRIER

Part Number: 74300

Application: 2007 JEEP JK WRANGLER

Your safety, and the safety of others, is very important. To help you make informed decisions about safety, we have provided installation and operating instructions and other information on labels and in this guide. This information alerts you to potential hazards that could hurt you or others. It is not possible to warn you about all potential hazards associated with this product, you must use your own good judgment.

CARELESS INSTALLATION AND OPERATION CAN RESULT IN SERIOUS INJURY OR EQUIPMENT DAMAGE.

READ AND UNDERSTAND ALL SAFETY PRECAUTIONS AND OPERATING INSTRUCTIONS BEFORE INSTALLING AND OPERATING THIS PRODUCT.

This guide identifies potential hazards and has important safety messages that help you and others avoid personal injury or death. **WARNING** and **CAUTION** are signal words that identify the level of hazard. These signal words mean:

WARNING signals a hazard that could cause serious injury or death, if you do not follow recommendations.

CAUTION signals a hazard that may cause minor to moderate injury, if you do not follow recommendations.

This guide uses **NOTICE** to call attention to important mechanical information, and **Note**: to emphasize general information worthy of special attention.

WARNING

INJURY HAZARD

Failure to observe these instructions could lead to severe injury or death.

- Always** Read the Winch Operator's Manual and all warning labels before operating.
- Always** use extreme caution when drilling on any vehicle. Make sure that all fuel lines, brake lines, electrical wires, and other objects are not punctured or damaged when/if drilling on the vehicle. Thoroughly inspect the area to be drilled (on both sides of material) prior to drilling, and relocate any objects that may be damaged. Failure to inspect the area to be drilled may result in vehicle damage, electrical shock, fire or personal injury.
- Always** wear safety glasses when installing this kit. A drilling operation will cause flying metal chips. Flying chips can cause eye injury.
- Always** use extreme caution when cutting and trimming during fitting.
- Always** remove jewelry and wear eye protection.
- Never** lean over battery while making connections.
- Never route electrical cables:**
 - o Across any sharp edges.
 - o Through or near moving parts.
 - o Near parts that become hot.
- Always** insulate and protect all exposed wiring and electrical terminals.
- Always** install terminal boots as directed in installation instructions.
- Always** use appropriate and adequate care in lifting components into place.
- Always** insure components will remain secure during installation and operation.
- Always** tighten all nuts and bolts securely, per the installation instructions..
- Always** replace all worn or damaged parts before operating.
- Never** operate this WARN product with damaged or missing parts.

Caution

Moving Parts Entanglement Hazard

Failure to observe these instructions could lead to minor or moderate injury.

- Always** take time to fully read and understand the installation and Operations Guide included with this product.
- Never** operate this product if you are under 16 years of age.
- Never** operate this product when under the influence of drugs, alcohol or medications.

Read installation and operating instructions thoroughly.

Notice

Equipment Damage

- Always** refer to the Installation and Specification Guide, supplied in the winch kit, for all wiring schematics and specific details on how to wire this WARN product to your vehicle.

Read installation and operating instructions thoroughly.

NOTES (As Applicable)

I. TABLE OF CONTENTS

Parts List	page 2
Tools Required	page 2
Torque Specifications	page 2
Installation	page 2-6
Maintenance/Care	page 6

II. PARTS LIST

<u>Part Number</u>	<u>Qty</u>	<u>Description</u>
74297	1	Hardware Kit
74286	1	Rear Bumper
74290	1	LH Frame Bracket
74289	1	RH Frame Bracket
74288	2	Frame Crush Tube

III. TOOLS REQUIRED

- Standard Socket Set
- Metric Socket Set
- 3/8 Racket
- 3/8 Extension
- Drill Motor and Bits (1/4" and 1/2")

IV. TORQUE SPECIFICATIONS

1/2" 75 lb. ft. (101.7 N-m)

V. INSTALLATION

1. Prepare the rear of the vehicle

Remove the factory rear bumper and brackets from the vehicle.

Disassemble the 3rd brake light and unplug it from the wire loom that comes out of the tailgate.

Remove the factory tire mount from the tailgate. Re-install the 8 factory bolts to the tailgate to prevent leakage.

2. Install frame hardware

Insert the frame crush tubes into the frame from the inside of the frame rail. See **Figure 1**.



Figure 1: Driver's Side view of Frame Crush Tube Installed.

Locate and install the frame brackets to each side of the vehicle. Use **Figure 2** to determine each bracket location. Insert a $\frac{1}{2}$ " x $1\frac{1}{4}$ " long bolt with flat washer through the frame bracket and the rear most hole in the side of the frame. Reach into the opening in the frame bracket and install a flat washer and $\frac{1}{2}$ " weld nut with handle onto the bolt.

Insert a $\frac{1}{2}$ x $4\frac{1}{2}$ " bolt and flat washer through the frame bracket, frame and into the crush tube. Install a flat washer and $\frac{1}{2}$ " lock nut onto the bolt. See **Figure 2**.

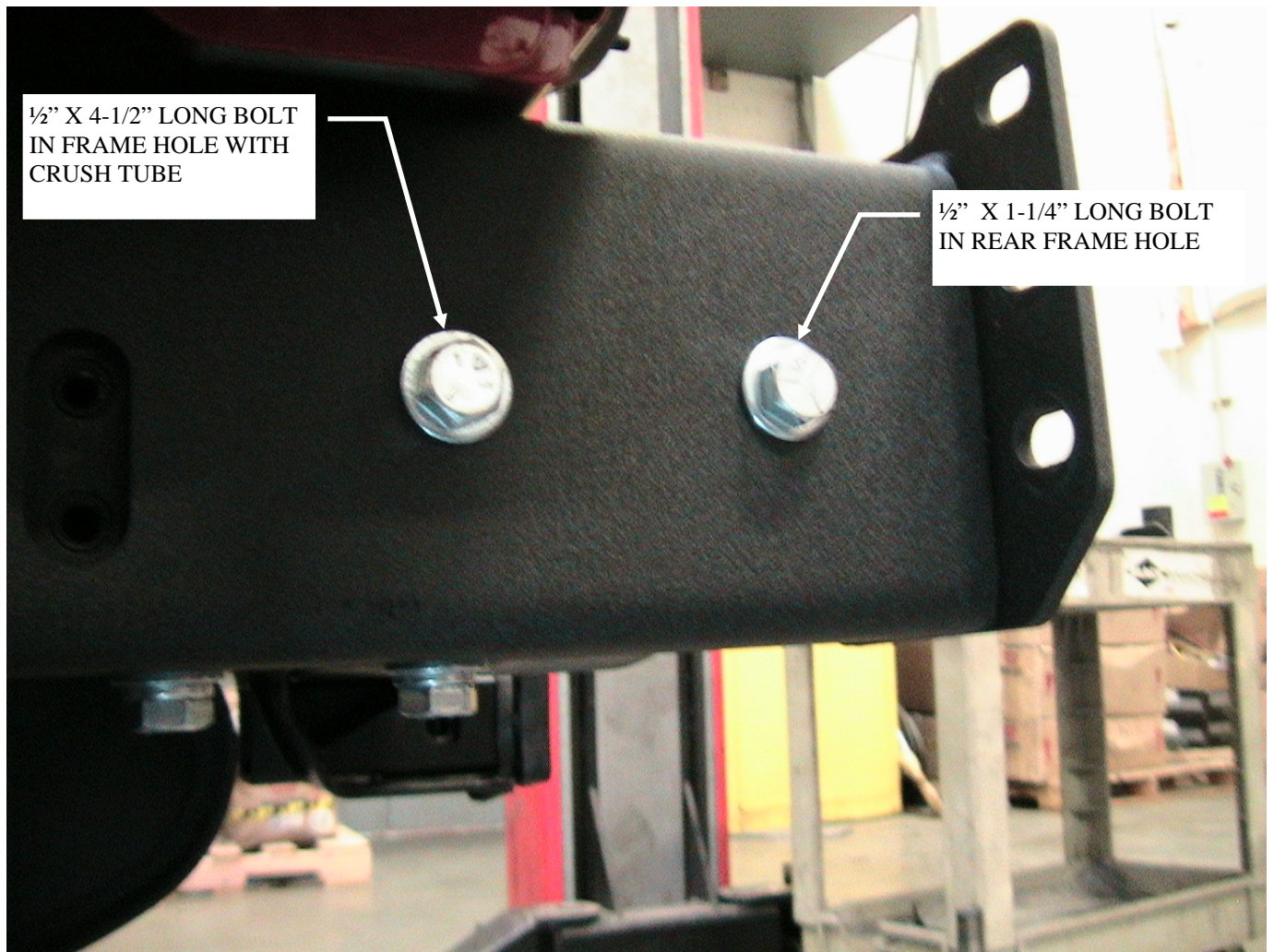


Figure 2: Driver's Side Frame Bracket and Bolt locations.

Install a $\frac{1}{2}$ " x $1\text{-}1/4$ " long bolt and flat washer into each of the two holes in the bottom of the frame bracket. Some frames do not have these holes already drilled in the bottom. If your frame does not have these holes, drill out each location using a drill motor and $\frac{1}{2}$ " drill bit. Once the holes are drilled install the bolts and flat washers from the bottom up into the frame and install a flat washer and $\frac{1}{2}$ " weld nut with handle onto each bottom.

⚠ WARNING



Drilling operations can cause flying chips. **WEAR SAFETY GOGGLES.**
Flying chips can cause eye injury.

Do not tighten the frame bracket mounting hardware until the bumper bolts are installed. Hand tighten all bolts but make sure you can still move the bracket around. Trim the handles off of the weld nuts. See **Figure 3**.

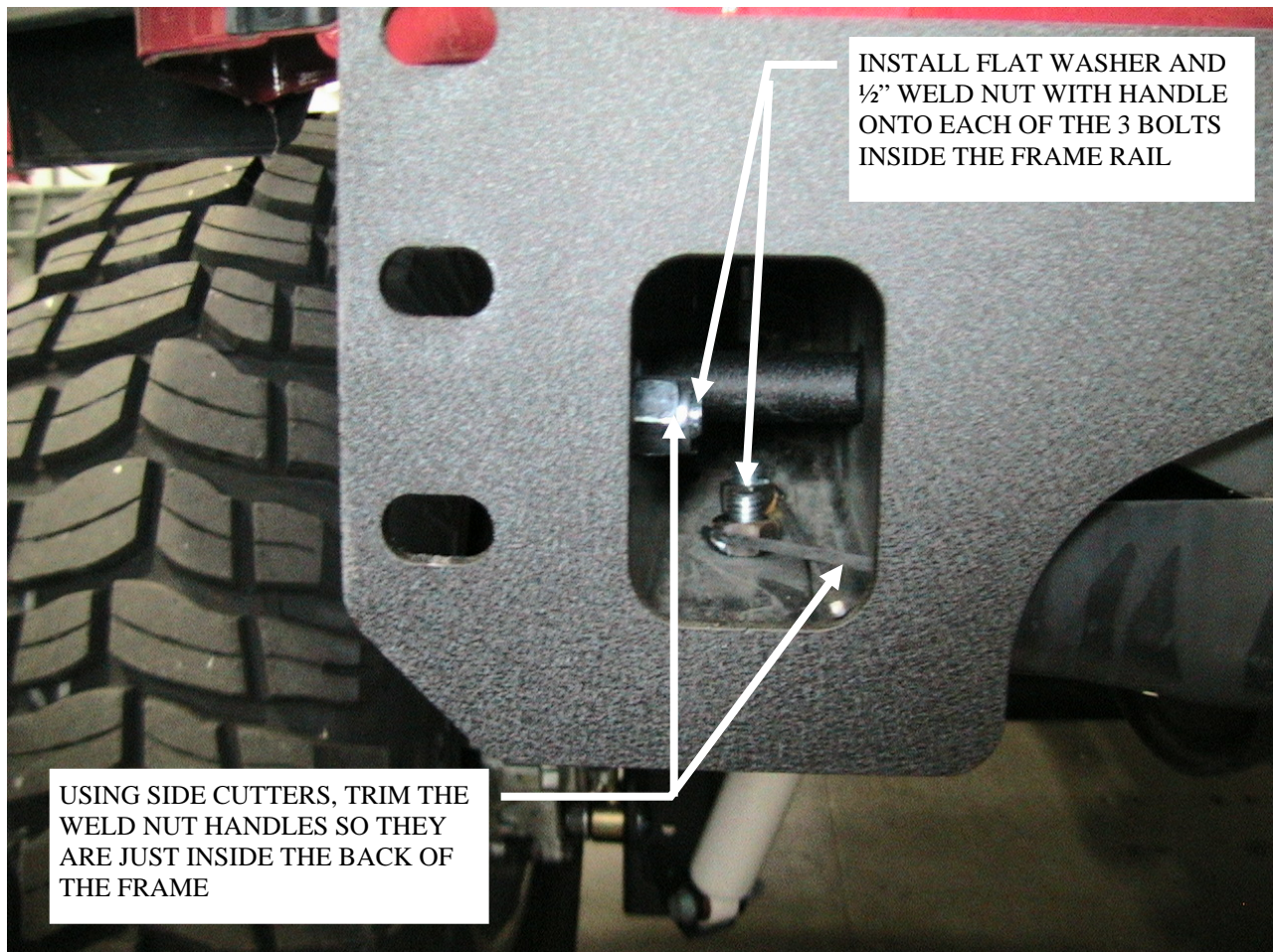


Figure 3: Internal frame weld nuts.

3. Prepare and Install bumper

Place the rear bumper onto the frame brackets. Install a 1/2" x 1-1/2" long bolt, lock washer and flat washer through each frame bracket and into the bumper. Install all 8 of the bolts through the frame brackets and into the bumper before tightening.

NOTE: Due to the non square frame rails, it will be necessary to leave the frame brackets somewhat loose until all 8 bumper bolts are started. If the frame brackets are tightened prior to installing the 8 bumper bolts, the inner most bumper bolts may not line up to the brackets.

Once all 8 bolts are installed in the bumper, start tightening the frame bracket bolts and then the bumper bolts. Torque all frame bracket and bumper bolts.

Using the bottom of the bumper as a guide, drill a 1/2" hole through the rear crossmember of the frame. Drill through the bottom and top of the crossmember. See **Figure 4**.

⚠ WARNING



Drilling operations can cause flying chips. **WEAR SAFETY GOGGLES.**
Flying chips can cause eye injury.



Figure 4: Drill two 1/2" holes into frame crossmember.

Some vehicles have holes already in the rear crossmember and may not require drilling on one side or both.

Once the two holes are drilled in the rear crossmember, install a 1/2" x 4-1/2" long bolt and flat washer up through the bumper and crossmember. Install a flat washer and lock nut onto each bolt. Torque the two bolts.

The bumper installation is now complete. Please follow the installation instructions included with the tire carrier.

PROCEED TO SECTION IV TITLED "MAINTENANCE/CARE".

 WARNING

FAILURE TO SECURELY TIGHTEN ALL BOLTS ON THE FRAME BRACKETS AND BUMPER CAN RESULT IN PRODUCT FAILURE WHICH MAY RESULT IN VEHICLE DAMAGE AND OPERATOR INJURY OR DEATH. DOUBLE CHECK THAT ALL BOLTS ARE SECURELY TIGHTENED PRIOR TO USE.

VI. MAINTENANCE/CARE

1. Inspect all parts on the frame brackets and bumper hardware periodically. Replace all hardware that appears rusted or deformed.
2. Inspect all nuts and bolts periodically. Tighten all nuts that appear to be loose. Stripped, fractured, or bent bolts or nuts need to be replaced.