



INSTALLATION INSTRUCTIONS

Ascent-HD Front Bumper

Part Number: 10718X

Application: 2017-20 Ford SD F450/F550

GENERAL SAFETY PRECAUTIONS

Your safety, and the safety of others, is very important. To help you make informed decisions about safety, we have provided installation and operating instructions and other information on labels and in this guide. This information alerts you to potential hazards that could hurt you or others. It is not possible to warn you about all potential hazards associated with this product, you must use your own good judgment.

CARELESS INSTALLATION AND OPERATION CAN RESULT IN SERIOUS INJURY OR EQUIPMENT DAMAGE. READ AND UNDERSTAND ALL SAFETY PRECAUTIONS AND OPERATING INSTRUCTIONS BEFORE INSTALLING AND OPERATING THIS PRODUCT.

This guide identifies potential hazards and has important safety messages that help you and others avoid personal injury or death. **WARNING** and **CAUTION** are signal words that identify the level of hazard. These signal words mean:

▲WARNING signals a hazard that could cause serious injury or death, if you do not follow recommendations. **▲CAUTION** signals a hazard that may cause minor to moderate injury, if you do not follow recommendations.

This guide uses **NOTICE** to call attention to important mechanical information, and **Note:** to emphasize general information worthy of special attention.

▲ WARNING

IMPACT AND MOVING PARTS ENTANGLEMENT HAZARD

Failure to observe these instructions could lead to severe injury or death

- **Always** Know Your Winch. Take time to fully read the Instructions and/or Operations Guide, and/or Basic Guide to Winching Techniques, in order to understand your winch and its operations.
- **Never** work under vehicle before properly securing vehicle.
- **Always** use appropriate and adequate care in lifting components into place.
- **Never** work under vehicle before properly securing vehicle.
- **Always** use appropriate and adequate care in lifting components into place.
- **Never** use a jack to support the vehicle.
- **Always** use jack stands in pairs to support the vehicle.
- **Always** use jacks or jack stands only on a hard, stable, and level surface.
- **Never** exceed the rated capacity of a jack or jack stands.
- **Always** verify that the parking brake is set, the transmission is in park (automatic) or reverse (manual) and the rear wheels are blocked before working on vehicle.
- **Never** work under vehicle before properly securing vehicle.
- **Always** use appropriate and adequate care in lifting components into place.
- **Always** insure components will remain secure during installation and operation.
- **Always** tighten all nuts and bolts securely, per the installation and operation.
- **Always** perform regular inspections and maintenance on the winch, winch mount and related hardware.
- **Always** replace all worn or damaged parts before operating.
- **Never** operate this WARN product with damaged or missing parts.
- **Always** use extreme caution when drilling on any vehicle. Make sure that all fuel lines, brakelines, electrical wires, and other objects are not punctured or damaged when/ if drilling on the vehicle. Thoroughly inspect the area to be drilled (on both sides of material) prior to drilling, and relocate any objects that may be damaged. Failure to inspect the area to be drilled may result in vehicle damage, electrical shock, fire or personal injury.
- **Always** use extreme caution when cutting and trimming during fitting.
- **Always** wear safety glasses when installing this kit. A drilling operation will cause flying metal chips. Flying chips can cause eye injury.
- **Always** remove jewelry and wear eye protection.
- **Never** lean over battery while making connections.
- **Never** route electrical cables across any sharp edge, through or near moving parts, near parts that become hot.

Read installation and operating instructions thoroughly.

⚠ CAUTION

MOVING PARTS ENTANGLEMENT HAZARD

Failure to observe these instructions could lead to minor or moderate injury

- Part edges may be sharp!
- Always use proper posture / lifting technique or get lifting assistance while handling and installing product.

Read installation and operating instructions thoroughly.

NOTICE

EQUIPMENT DAMAGE

- **Never** tow vehicle by attaching a towbar to the eyelets on the bumper.
- Do not attach tow bars directly to the bumper. Damage to bumper may occur. **WARN** bumpers are not designed to be used for flat towing. Consult with the manufacturer of your towbar system for the proper vehicle tow bar brackets.

Read installation and operating instructions thoroughly.

BEFORE YOU BEGIN

- **BEFORE YOU BEGIN READ INSTALLATION INSTRUCTION THOROUGHLY.**

NOTICE



This product may interfere with driver assist systems such as adaptive cruise control and parking assist systems that have sensors or cameras installed in the bumpers or front grill area. If your vehicle is equipped with any of these systems or features, consult your vehicle owner's manual before installing this product. These systems may need to be disabled as a result of installing this product.

TABLE OF CONTENT S

Tools Required	page 2
Torque Specifications	page 2
Parts List	page 3
Installation	page 4-8
Maintenance/Care	page 9

TOOLS REQUIRED

- Standard wrenches
- Standard sockets
- Metric socket set
- 3/8" Drive Ratchet
- 1/2" Drive Ratchet
- Metric wrench set
- Torque wrench
- Phillip head screwdriver
- Allen head wrench

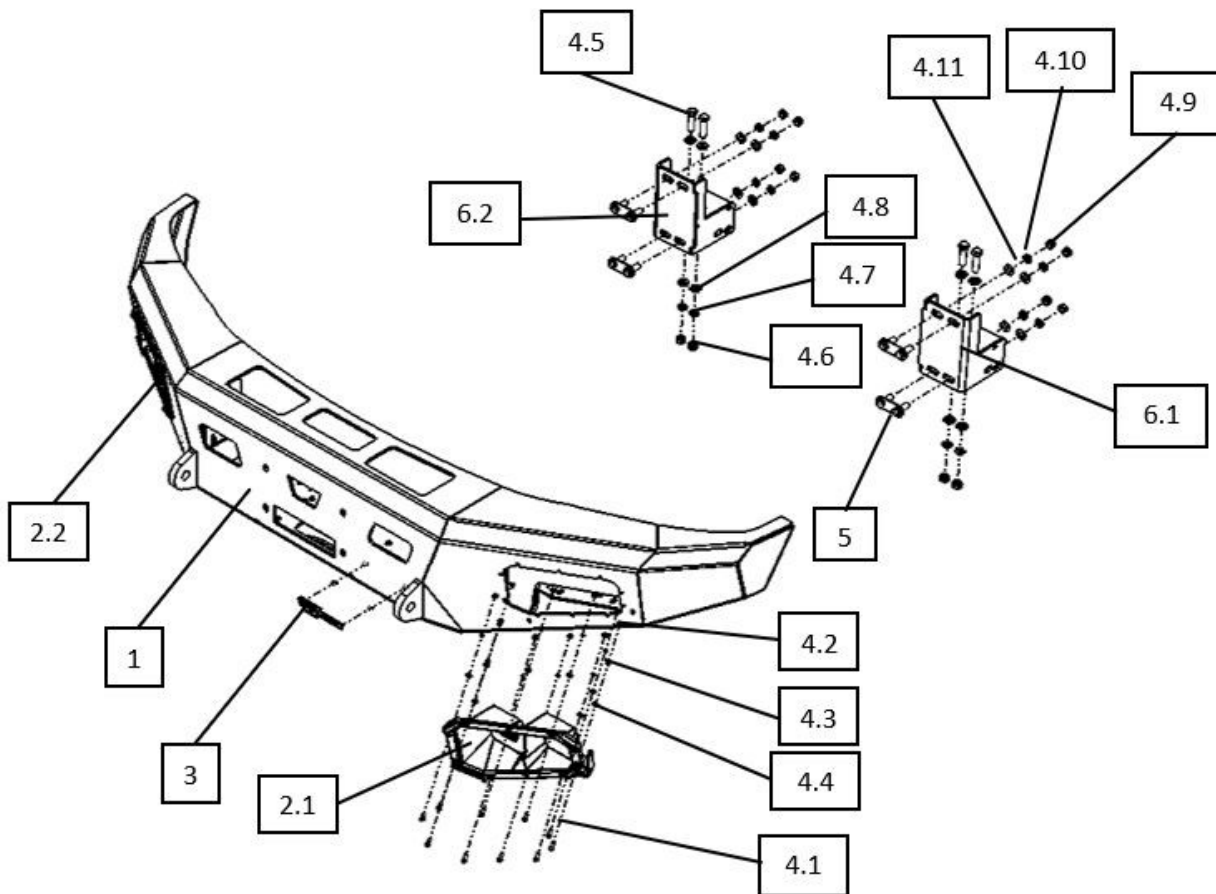
TORQUE SPECIFICATIONS

Please use the recommended torque specifications when assembling this product unless otherwise specified in the instructions.

FASTENER SIZE	FASTENER TORQUE		FASTENER SIZE	FASTENER TORQUE	
	lb-ft	(N.m)		lb-ft	(N.m)
1/4"	8	(11)	M4	(2)	3
5/16"	17	(23)	M5	(4.5)	6
3/8"	30	(40)	M6	(7.5)	10
7/16"	48	(66)	M8	(18)	25
1/2"	74	(100)	M10	(37)	50
9/16"	106	(144)			
5/8"	148	(200)			
3/4"	269	(364)			

PARTS LIST

ITEM	PART NO.	DESCRIPTION	QTY	ITEM	PART NO.	DESCRIPTION	QTY
1	10718X	WARN Ascent HD 2017+ Ford SD Bumper	1	51	20296	½" Bolt strip	4
2.1	94888	Light Insert RH	1	6.1	99397	10718X DS mounting bracket	1
2.2	94889	Light Insert LH	1	6.2	99397	10718X PS mounting bracket	1
3	102483	WARN Ascent DS Label	1				
4	50246-HW	WARN Super Duty HW Kit	1				
4.1	101064	10-24X3/4 Button head bolt <i>(no tall shown)</i>	20				
4.2	101065	10-24 Machine screw nut	20				
4.3	101072	#10 Split lock washer	20				
4.4	101067	#10 Flat washer	20				
4.5	101039	M14-2X50mm Hex head cap screw	4				
4.6	100975	M14-2 Hex head nut	4				
4.7	100974	M14 Lock washer	4				
4.8	100511	M14 Flat washer	8				
4.9	100601	½-13 Hex head nut	8				
4.10	100604	½" Lock washer	8				
4.11	100606	½" Flat washer	8				



INSTALLATION INSTRUCTIONS

1. Start by removing four bolts around tow hook on each side of vehicle. This will require an 18mm socket. (Fig. 1)

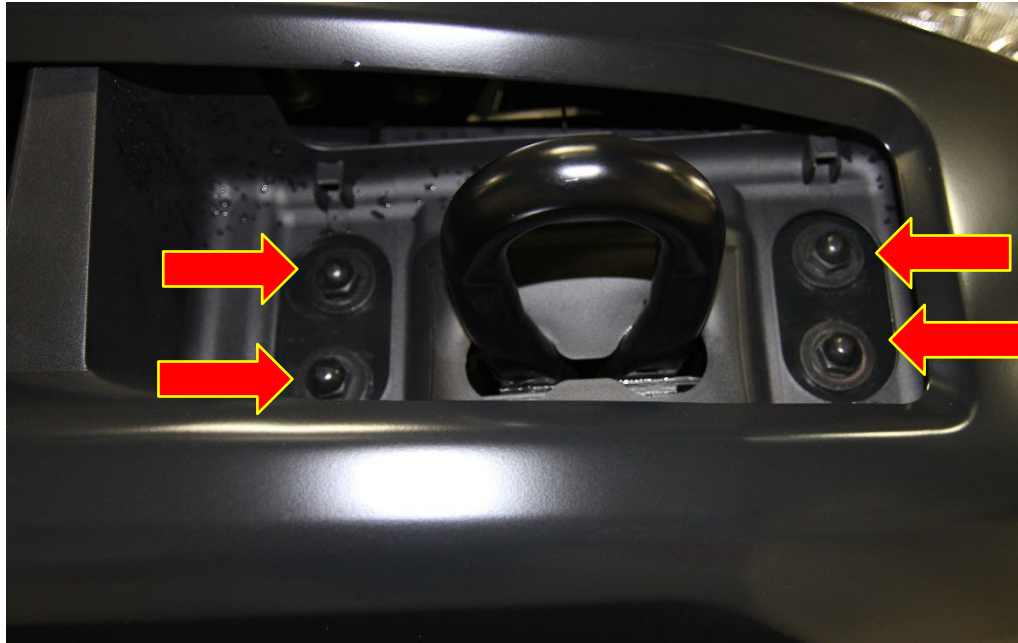


Figure 1

2. Next, with the help of someone holding the bumper in place, remove the four 15mm bolts from the bumper supports on both sides of vehicle. (Fig. 2)



Figure 2

3. The bumper can now be removed. (Be careful when removing bumper if vehicle has a block heater, as this will have to be unplugged during this step.)

INSTALLATION INSTRUCTIONS

4. With the bumper off the vehicle, you can now remove the tow hooks by removing the four 18mm bolts located under the top of frame rail. (Fig. 3)

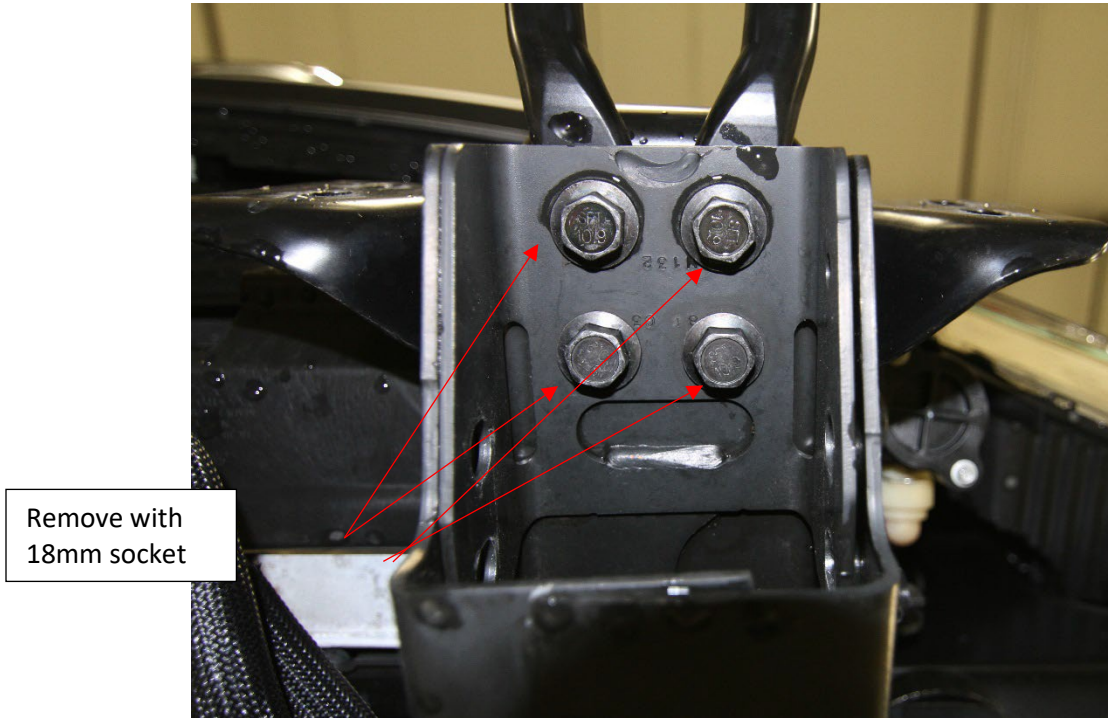


Figure 3

5. Next, using 18mm socket remove the two nuts on either side of the frame attaching frame horns to frame. Set bolt strips and nuts aside as they will be used in the installation of WARN bumper. (Fig. 4)

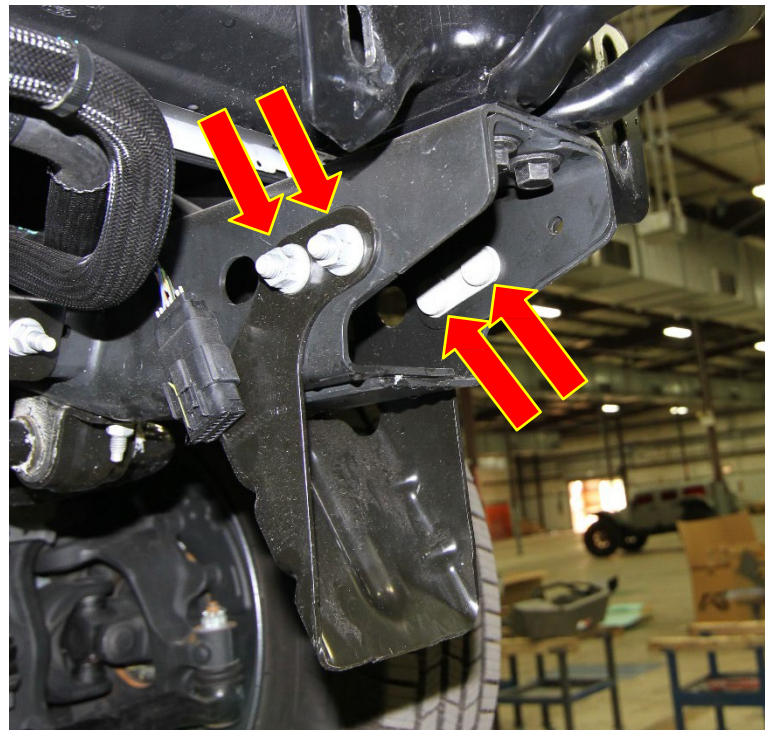


Figure 4

INSTALLATION INSTRUCTIONS

- Optional:** If you are installing a winch with this bumper installation, do so now. Use the bracket or clamps supplied with the winch to mount the control pack; be sure to install the winch ground strap before installing the winch in the bumper. Once the control pack is installed on the winch, insert the winch into the bumper. The control pack should be facing up with the four front mounting holes facing forward.

Insert the winch by first tipping the end with the clutch lever up and inserting the control pack end in the bumper first. Then insert the clutch lever end in the bumper. Use the hardware supplied with the winch to properly mount the winch to the bumper. Follow the instructions supplied with the winch for the proper bolt location. The winch comes with two different length 7/16" bolts, so read the instructions with the winch to ensure the proper locations.

If not installing a winch, a license plate may be installed onto the front face of the bumper. (Hardware not included.)

- Start by installing mounting bracket as shown below. Do not fully tighten the hardware. (Fig. 5)



Figure 5

- Install the two light boxes (94888 and 94889) into the bumper on the RH and LH side respectively. Use the provided #10-24 Bolts, flat and lock with nuts to attach them to the bumper and tighten them with 10mm socket wrench and 3mm allen wrench (50246-HW). (Fig 6-7)

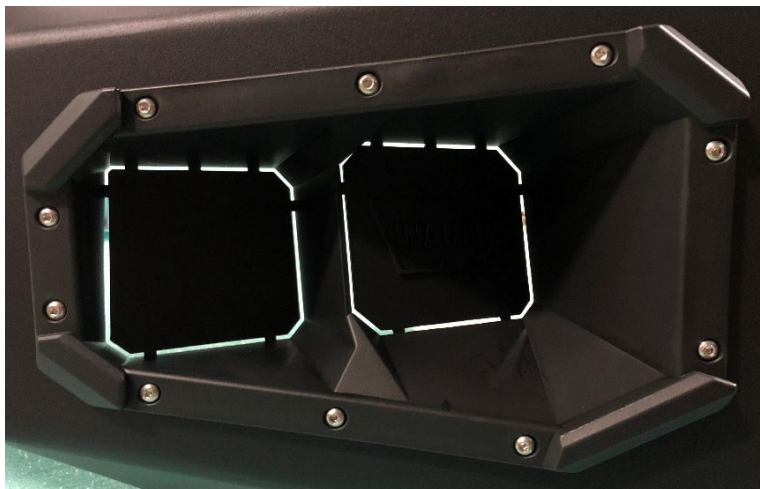


Figure 6



Figure 7

9. Once the brackets are loosely installed, with the help of two other people, lift the bumper into place.
10. With the bumper in place loosely install using the bolt strips and 1/2" flat and lock washers with nuts (50246-HW). (Fig.8)



Figure 8

11. Next hold the bumper into desired position on the truck. NOTE: WARN recommends a MINIMUM gap of 3/8" at the outer fenders and headlights to prevent paint damage in normal operation.
12. With bumper in position you can begin tightening all hardware. Tighten all fasteners fully, beginning with frame mounts. Then tighten all mount-to-bumper fasteners.

INSTALLATION INSTRUCTIONS

MAINTENANCE / CARE

1. Inspect all parts on the winch, winch mount, and related hardware prior to each use. Replace all hardware that appears rusted or deformed.
2. Inspect all nuts and bolts on the winch, winch mount, and related hardware prior to each use. Tighten all nuts that appear to be loose. Stripped, fractured, or bent bolts or nuts need to be replaced.
3. Check all cables prior to use. Replace cables that look worn or frayed.
4. Check all moving or rotating parts. Remove debris that may inhibit the part from moving freely.

CARELESS INSTALLATION AND OPERATION CAN RESULT IN SERIOUS INJURY OR EQUIPMENT DAMAGE. READ AND UNDERSTAND ALL SAFETY PRECAUTIONS AND OPERATING INSTRUCTIONS BEFORE INSTALLING AND OPERATING THIS PRODUCT.



Learn more about off-road bumpers we have.