



INSTALLATION INSTRUCTIONS

Ascent-HD Front Bumper

Part Number: 107004-6

Application: 2020 Chevrolet HD

GENERAL SAFETY PRECAUTIONS

Your safety, and the safety of others, is very important. To help you make informed decisions about safety, we have provided installation and operating instructions and other information on labels and in this guide. This information alerts you to potential hazards that could hurt you or others. It is not possible to warn you about all potential hazards associated with this product, you must use your own good judgment.

CARELESS INSTALLATION AND OPERATION CAN RESULT IN SERIOUS INJURY OR EQUIPMENT DAMAGE. READ AND UNDERSTAND ALL SAFETY PRECAUTIONS AND OPERATING INSTRUCTIONS BEFORE INSTALLING AND OPERATING THIS PRODUCT.

This guide identifies potential hazards and has important safety messages that help you and others avoid personal injury or death. **WARNING** and **CAUTION** are signal words that identify the level of hazard. These signal words mean:

▲WARNING signals a hazard that could cause serious injury or death, if you do not follow recommendations. **▲CAUTION** signals a hazard that may cause minor to moderate injury, if you do not follow recommendations.

This guide uses **NOTICE** to call attention to important mechanical information, and **Note:** to emphasize general information worthy of special attention.

▲ WARNING

IMPACT AND MOVING PARTS ENTANGLEMENT HAZARD

Failure to observe these instructions could lead to severe injury or death

- **Always** Know Your Winch. Take time to fully read the Instructions and/or Operations Guide, and/or Basic Guide to Winching Techniques, in order to understand your winch and its operations.
- **Never** work under vehicle before properly securing vehicle.
- **Always** use appropriate and adequate care in lifting components into place.
- **Never** work under vehicle before properly securing vehicle.
- **Always** use appropriate and adequate care in lifting components into place.
- **Never** use a jack to support the vehicle.
- **Always** use jack stands in pairs to support the vehicle.
- **Always** use jacks or jack stands only on a hard, stable, and level surface.
- **Never** exceed the rated capacity of a jack or jack stands.
- **Always** verify that the parking brake is set, the transmission is in park (automatic) or reverse (manual) and the rear wheels are blocked before working on vehicle.
- **Never** work under vehicle before properly securing vehicle.
- **Always** use appropriate and adequate care in lifting components into place.
- **Always** insure components will remain secure during installation and operation.
- **Always** tighten all nuts and bolts securely, per the installation and operation.
- **Always** perform regular inspections and maintenance on the winch, winch mount and related hardware.
- **Always** replace all worn or damaged parts before operating.
- **Never** operate this WARN product with damaged or missing parts.
- **Always** use extreme caution when drilling on any vehicle. Make sure that all fuel lines, brake lines, electrical wires, and other objects are not punctured or damaged when/if drilling on the vehicle. Thoroughly inspect the area to be drilled (on both sides of material) prior to drilling, and relocate any objects that may be damaged. Failure to inspect the area to be drilled may result in vehicle damage, electrical shock, fire or personal injury.
- **Always** use extreme caution when cutting and trimming during fitting.
- **Always** wear safety glasses when installing this kit. A drilling operation will cause flying metal chips. Flying chips can cause eye injury.
- **Always** remove jewelry and wear eye protection.
- **Never** lean over battery while making connections.
- **Never** route electrical cables across any sharp edge, through or near moving parts, near parts that become hot.

Read installation and operating instructions thoroughly.

⚠ CAUTION

MOVING PARTS ENTANGLEMENT HAZARD

Failure to observe these instructions could lead to minor or moderate injury

- Part edges may be sharp!
- Always use proper posture / lifting technique or get lifting assistance while handling and installing product.

Read installation and operating instructions thoroughly.

NOTICE

EQUIPMENT DAMAGE

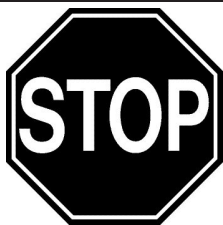
- **Never** tow vehicle by attaching a tow bar to the eyelets on the bumper.
- Do not attach tow bars directly to the bumper. Damage to bumper may occur. WARN bumpers are not designed to be used for flat towing. Consult with the manufacturer of your tow bar system for the proper vehicle tow bar brackets..

Read installation and operating instructions thoroughly.

BEFORE YOU BEGIN

- **BEFORE YOU BEGIN READ INSTALLATION INSTRUCTION THOROUGHLY.**

NOTICE



This product may interfere with driver assist systems such as adaptive cruise control and parking assist systems that have sensors or cameras installed in the bumpers or front grill area. If your vehicle is equipped with any of these systems or features, consult your vehicle owner's manual before installing this product. These systems may need to be disabled as a result of installing this product.

TABLE OF CONTENTS

Tools Required	page 2
Torque Specifications	page 2
Parts List	page 3
Installation	page 4-15
Maintenance/Care	page 16

TOOLS REQUIRED

- Standard wrenches
- Standard sockets
- Metric socket set
- 7/16" Open End wrench
- 3/4" Open End wrench
- Metric wrench set
- Torque wrench
- T10 Star Head socket wrench
- Wire cutters
- Pliers
- Body pry tool

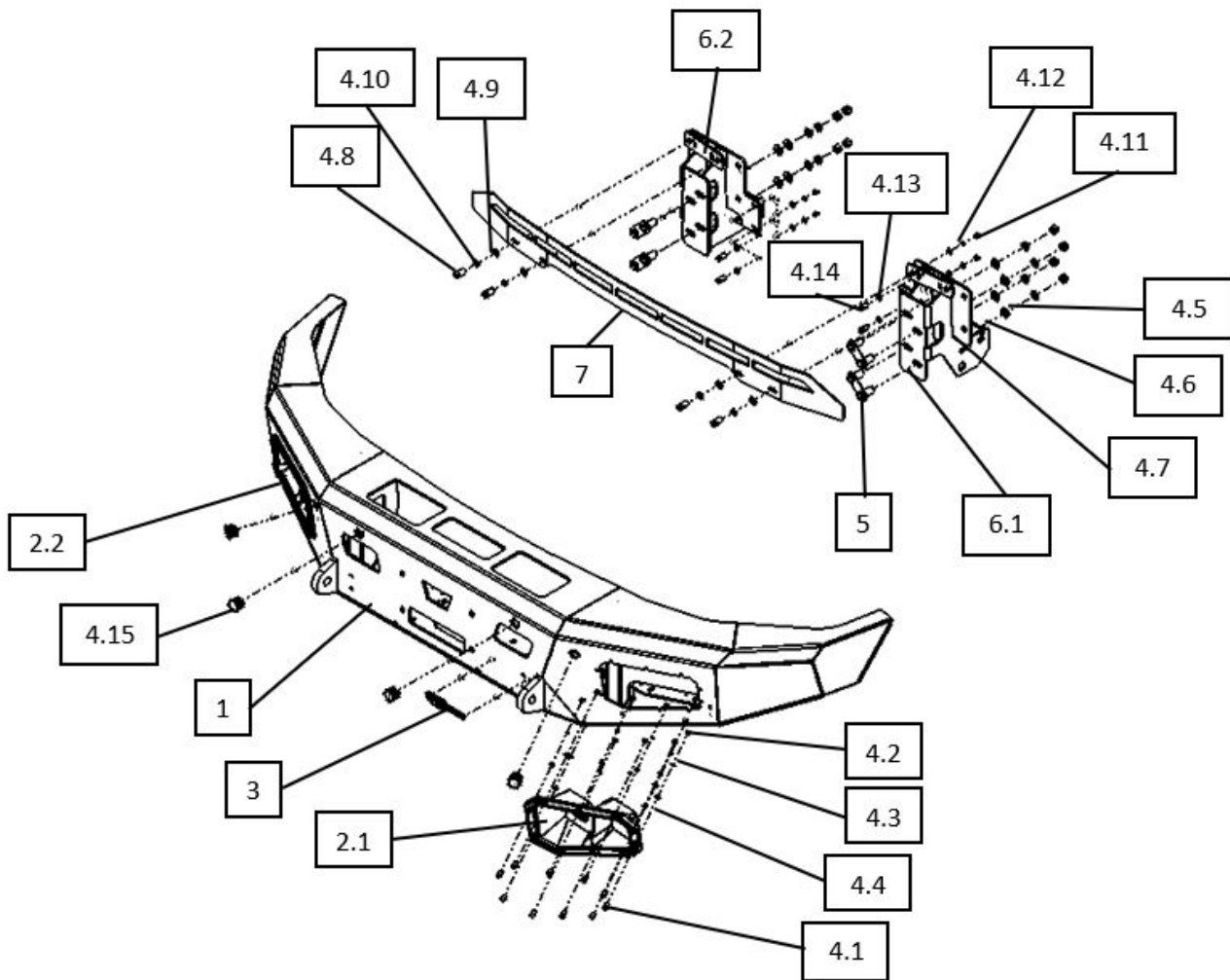
TORQUE SPECIFICATIONS

Please use the recommended torque specifications when assembling this product unless otherwise specified in the instructions.

FASTENER SIZE	FASTENER TORQUE		FASTENER SIZE	FASTENER TORQUE	
	lb-ft	(N.m)		lb-ft	(N.m)
1/4"	8	(11)	M4	(2)	3
5/16"	17	(23)	M5	(4.5)	6
3/8"	30	(40)	M6	(7.5)	10
7/16"	48	(66)	M8	(18)	25
1/2"	74	(100)	M10	(37)	50
9/16"	106	(144)			
5/8"	148	(200)			
3/4"	269	(364)			

PARTS LIST

ITEM	PART NO.	DESCRIPTION	QTY	ITEM	PART NO.	DESCRIPTION	QTY
1	107004-6	WARN Ascent HD 2020 Chevrolet Base	1	5	20296	½" Bolt strip	4
2.1	94888	Light Insert RH	1	6.1	22226-W	107004-6 DS mount bracket	1
2.2	94889	Light Insert LH	1	6.2	22227-W	107004-6 PS mounting bracket	1
3	102483	WARN Ascent DS Label	1	7	22251	Chevrolet backer strip	1
4	50250-HW	WARN HW Kit	1				
4.1	101064	10-24X3/4 Button head bolt <i>(not all shown)</i>	20				
4.2	101065	10-24 Machine screw nut	20				
4.3	101072	#10 Split lock washer	20				
4.4	101067	#10 Flat washer	20				
4.5	100601	½" -13 Hex head nut	8				
4.6	100604	½" Lock washer	8				
4.7	100606	½" Flat washer	8				
4.8	100571	3/8" x16 x 1 Hex head cap screw	4				
4.9	100573	3/8" Flat washer	4				
4.10	100560	3/8" Lock washer	4				
4.11	100543	¼"-20 Hex nut	4				
4.12	100547	¼" Lock washer	4				
4.13	100548	¼" Flat washer	4				
4.14	100536	¼"-20 x1 Hex head cap screw	4				
4.15	61776	1-1/4" Plastic sensor plug	4				



INSTALLATION INSTRUCTIONS

1. Use a T10 star head socket wrench to remove the two (2) bolts from both the passenger and driver side wheel wells. (Figure 1)

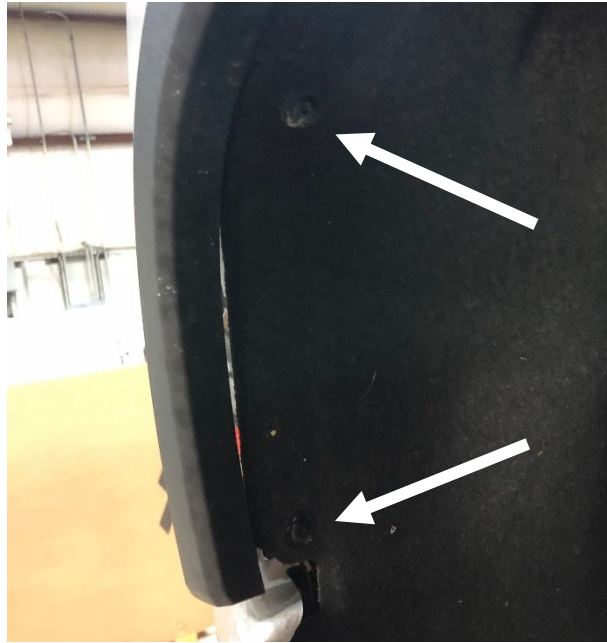


Figure 1.

2. Use a body pry tool to carefully remove the front of the fender flare away from the body. Use a 7mm socket wrench to remove the bolt on the valance. (Figure 2)



Figure 2

INSTALLATION INSTRUCTIONS

3. With the 7mm bolt removed use a body pry tool to remove the valance from the truck. (Figure 3)



Figure 3.

4. Use a 10mm socket wrench to remove the two (2) bolts at the base of the grill. (Figure 4)



Figure 4

INSTALLATION INSTRUCTIONS

5. Use a body pry tool to remove the nine (9) push pins holding the grill cover. (Figure 5)

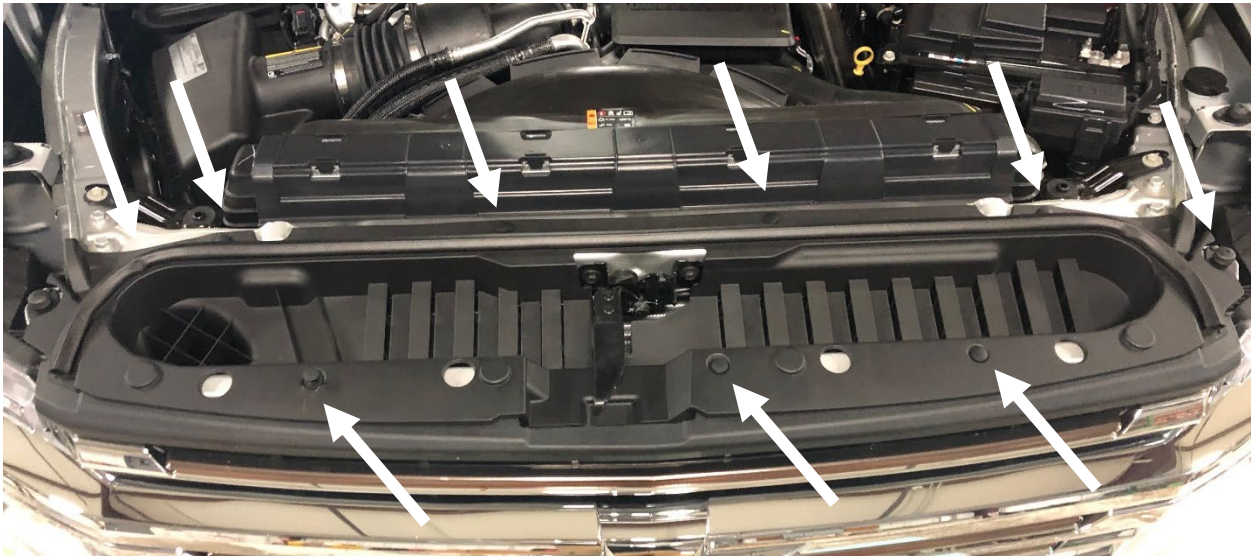


Figure 5

6. Use a T10 socket wrench to remove the two bolts holding the hood latch on. With the hood latch taken off you can remove the grill cover. (Figure 6)



Figure 6.

INSTALLATION INSTRUCTIONS

7. Use a 10mm socket wrench to remove the four (4) bolts on the top of the grill. (Figure 7)

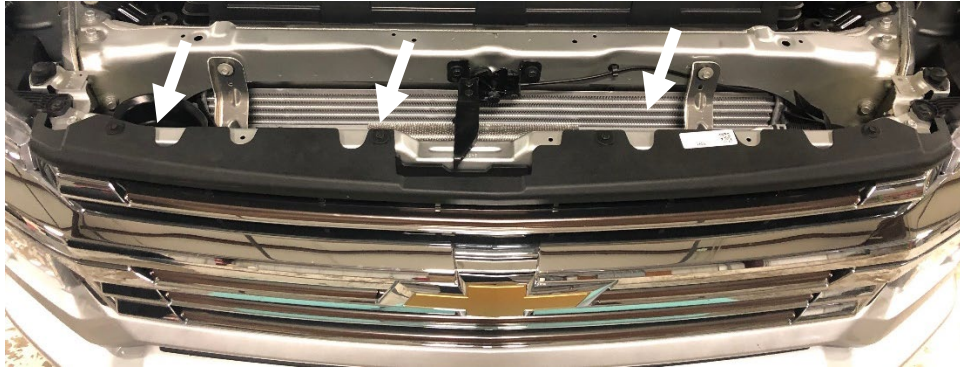


Figure 7

8. With the bolts removed, carefully take the grill off the truck. While taking off the grill, unplug the camera harness on the passenger side of the truck. (Figure 8)



Figure 8.

9. From under the truck: use a 15mm socket wrench to remove the two (2) back bolts on the bumper support bracket on both sides. (Figure 9)

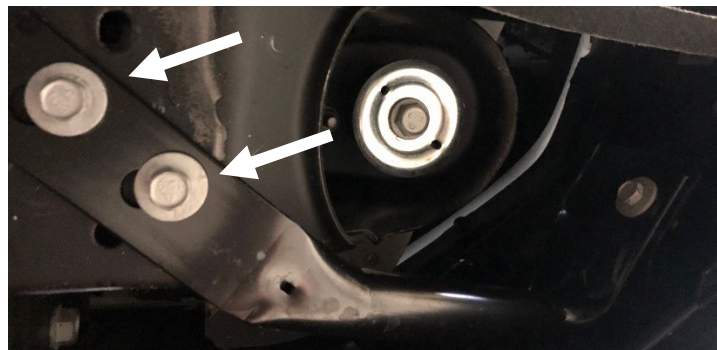


Figure 9

INSTALLATION INSTRUCTIONS

10. With the grill gone you can access the bumper mounting bolts on the top deck. Use a 15mm socket wrench to remove the two (2) bolts one of the top and one on the bottom. The bumper can now be removed from the truck. (Figure 10-11)

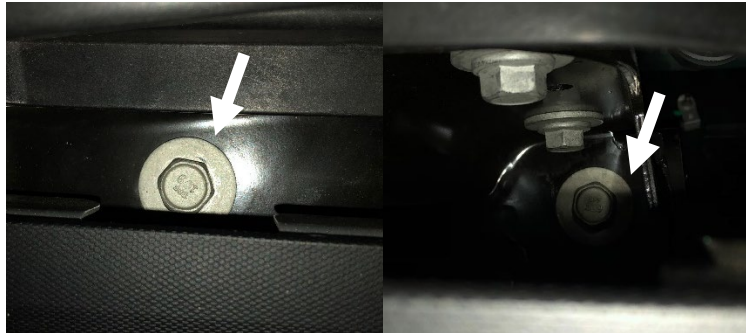


Figure 10

Figure 11

11. As you remove the bumper, unplug the sensor, heater plug, and lower louver harnesses located on the driver side of the truck. (Figure 12)

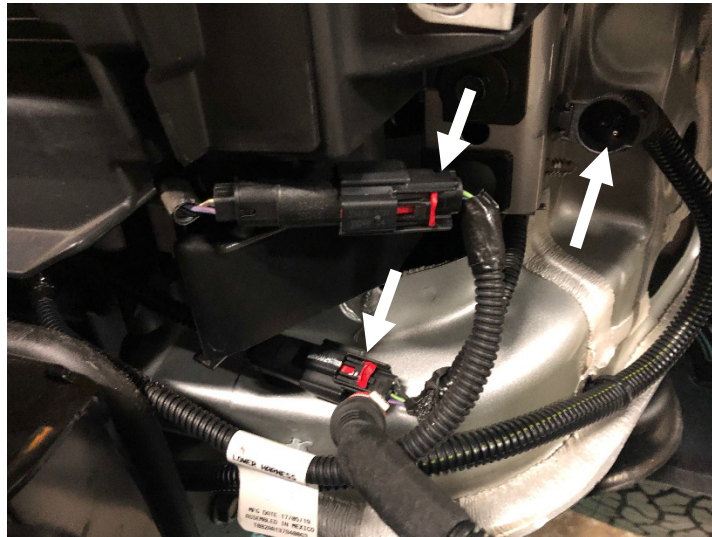


Figure 12

12. If equipped, remove the factory tow hooks by using an 18mm socket wrench to unfasten the two (2) bolts in the frame. (Figure 13)

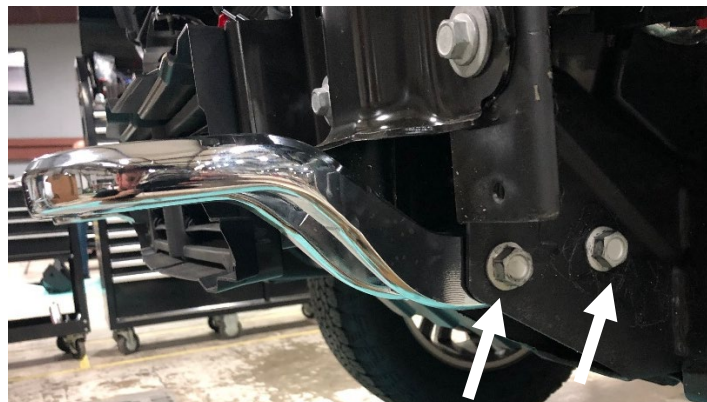


Figure 13

INSTALLATION INSTRUCTIONS

13. Use a 15mm socket wrench to take four (4) bolts holding the mounting plates and lower louvers to the frame horns. (Figure 14)

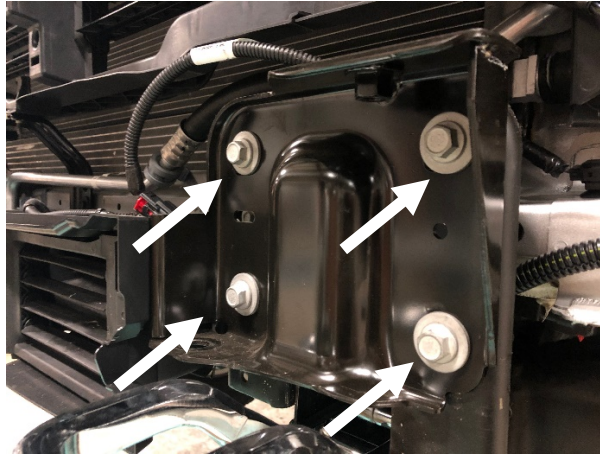


Figure 14

14. Disconnect the lower louvers from the mounting plates by using a 7mm socket wrench to remove the six (6) bolts. Set bolts aside for later use. (Figure 15)



Figure 15

15. With the louvers removed, use a cutting tool to remove the plugs on both sides. (Figure 16)

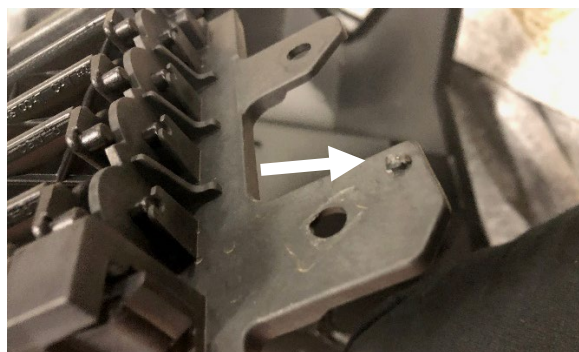


Figure 16

INSTALLATION INSTRUCTIONS

16. If equipped, remove the engine heater plug located on the driver side of the truck bumper. Push the bumper in against the spring and turn counterclockwise, once unclipped pull out from the bumper. (Figure 17)

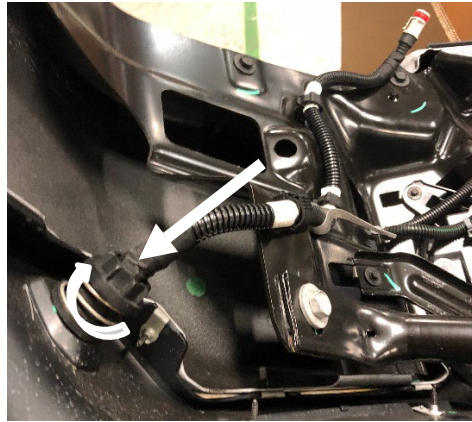


Figure 17

17. Carefully remove the four sensors and sensor housings from the bumper by spreading the housing clips out and pushing the sensor out simultaneously. Make sure to mark the position of each housing for installing into the WARN bumper. (Figure 18)

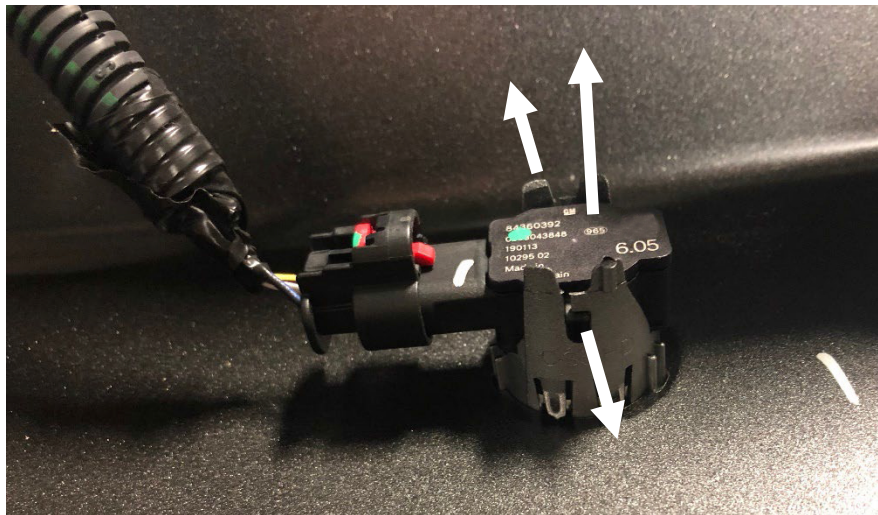


Figure 18

INSTALLATION INSTRUCTIONS

18. Remove the sensor housings from the bumper by pressing the retainer clips in on the sides and pushing the housing out. (Figure 19)

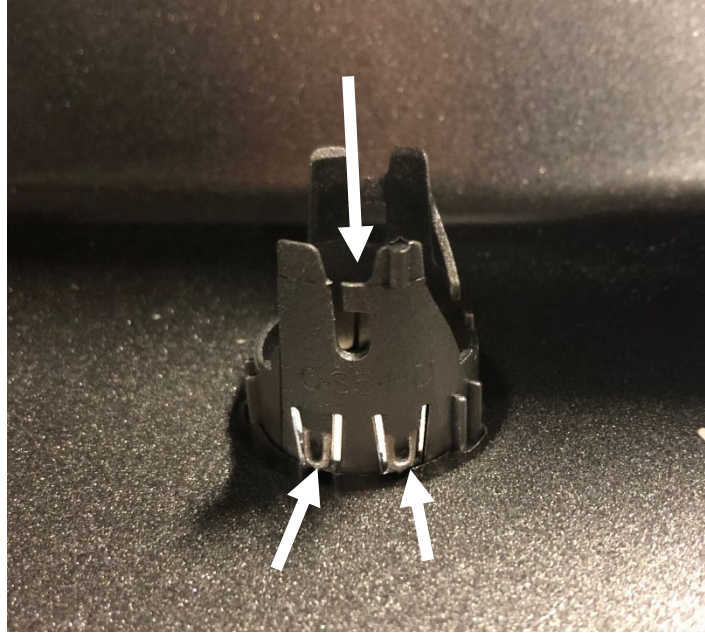


Figure 19

19. Install the two mounting brackets (22226 and 22227) using a 15mm and 18mm socket wrench and the OEM tow hook bolts and bracket bolts removed during steps 12-13. (Figure 20)

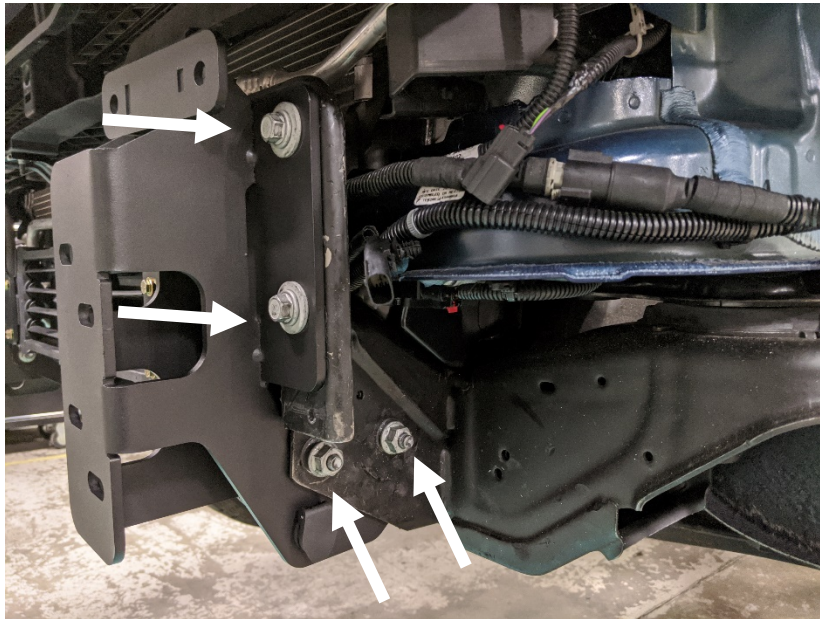


Figure 20

INSTALLATION INSTRUCTIONS

20. Using the provided four (4) bolt stacks of ¼"-20 yellow zinc hex bolt, flat washers, lock washer, and hex nut, loosely install the factory louver system with a ½" socket wrench. (Figure 21) (50250-HW)



Figure 21

21. Reverse the process in step 16 to install the heater plug into the driver side mounting bracket. Reconnect the heater plug wiring harness before mounting the bumper. (Figure 22)

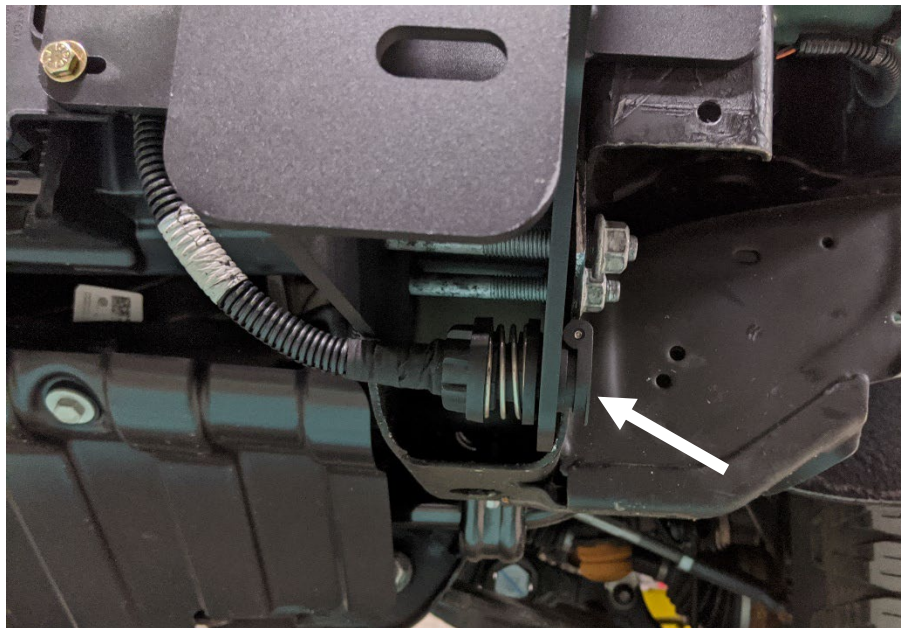


Figure 22

INSTALLATION INSTRUCTIONS

- Using the provided four (4) bolt stacks of 3/8"-16 yellow zinc hex bolt, flat washers, lock washer, and hex nut, loosely install the backer strip (22251) to both brackets (22226 & 22227). Center the backer strip with the grill and fully tighten with a 9/16" socket wrench. (50250-HW) (Figure 23)



Figure 23

- Using the provided epoxy, secure all four (4) OEM sensor housings in their appropriate sensor cutout in the bumper (107004-6). (Figure 24)



Figure 24

INSTALLATION INSTRUCTIONS

24. After the epoxy has cured, fully seat all four (4) sensors into the sensor housings being mindful not to distort the rubber sensor isolator that sits around the sensor tip. Be sure both sides of the sensor housing are fully clipped on the sensor.
25. Route and zip tie the factory wiring harness to the bumper (107004-6) with the main factory connector being on the passenger wing.
26. Install the light housings (94888-94889) into the bumper using the #10 stainless steel bolts, flat/lock washers and nuts (50250-HW). (Figure 26)

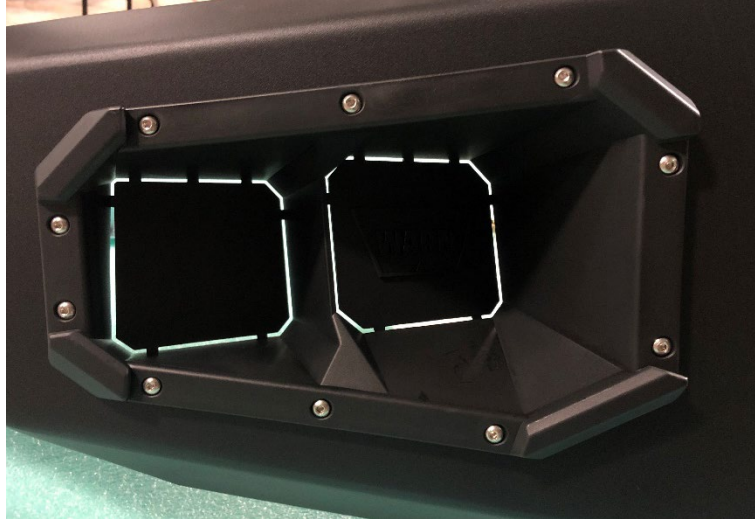


Figure 26

Optional: If you are installing a winch with this bumper installation, do so now. Use the bracket or clamps supplied with the winch to mount the control pack; be sure to install the winch ground strap before installing the winch in the bumper. Once the control pack is installed on the winch, insert the winch into the bumper. The control pack should be facing up with the four front mounting holes facing forward.

Insert the winch by first tipping the end with the clutch lever up and inserting the control pack end in the bumper first. Then insert the clutch lever end in the bumper. Use the hardware supplied with the winch to properly mount the winch to the bumper. Follow the instructions supplied with the winch for the proper bolt location. The winch comes with two different length 7/16" bolts, so read the instructions with the winch to ensure the proper locations.

If not installing a winch, a license plate may be installed onto the front face of the bumper. (Hardware not included.)

INSTALLATION INSTRUCTIONS

27. With assistance, lift the bumper up to the brackets (22226 & 22227) and secure it loosely using the provided four (4) bolt strips (20296) and eight (8) 1/2"-13, yellow zinc hex nut, flat washers, lock washer. (Figure 27-28) (50250-HW)

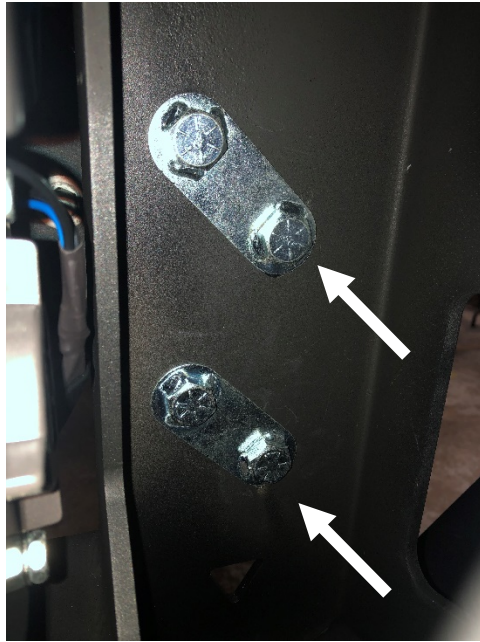


Figure 27

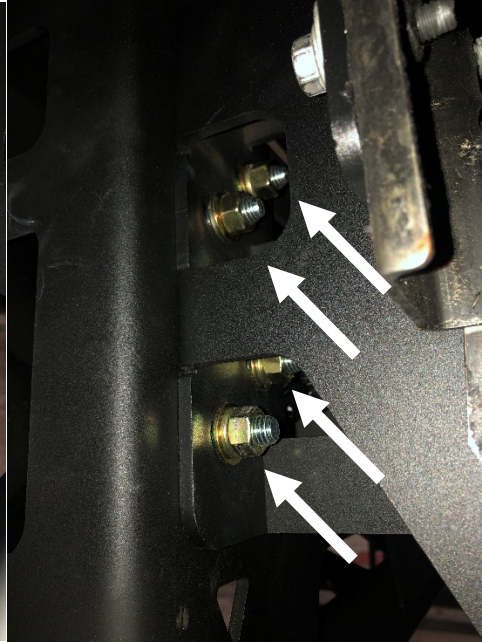


Figure 28

28. With assistance of two, lift and center the bumper to the vehicle and using an $\frac{3}{4}$ " open end wrench, fully tighten down the eight (8) $\frac{1}{2}$ "-13 nuts securing the bumper (107004-6) to the brackets. (22226 & 22227)
29. Reconnect the factory wiring harness main connector and both fog lights (if equipped)
30. Note: if your truck is not equipped with sensors, use the provided 1-1/4" plastic sensor plugs to fill the sensor holes (50250-HW). (Figure 29)



Figure 29

INSTALLATION INSTRUCTIONS

MAINTENANCE / CARE

1. Inspect all parts on the winch, winch mount, and related hardware prior to each use. Replace all hardware that appears rusted or deformed.
2. Inspect all nuts and bolts on the winch, winch mount, and related hardware prior to each use. Tighten all nuts that appear to be loose. Stripped, fractured, or bent bolts or nuts need to be replaced.
3. Check all cables prior to use. Replace cables that look worn or frayed.
4. Check all moving or rotating parts. Remove debris that may inhibit the part from moving freely.

CARELESS INSTALLATION AND OPERATION CAN RESULT IN SERIOUS INJURY OR EQUIPMENT DAMAGE. READ AND UNDERSTAND ALL SAFETY PRECAUTIONS AND OPERATING INSTRUCTIONS BEFORE INSTALLING AND OPERATING THIS PRODUCT.



Learn more about off-road bumpers we have.