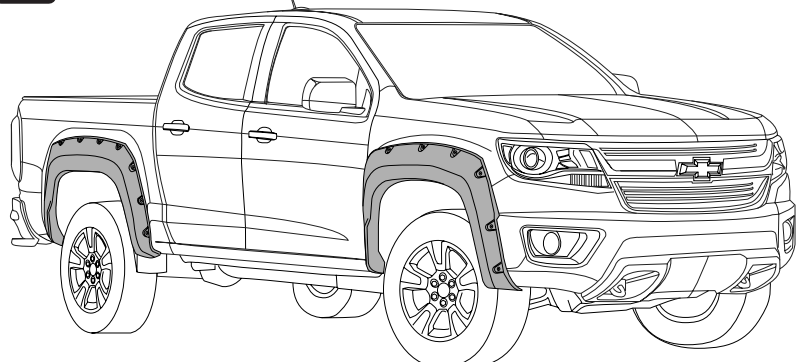




GM - COLORADO 2015

INSTALLATION MANUAL

! READ CAREFULLY BEFORE INSTALLATION

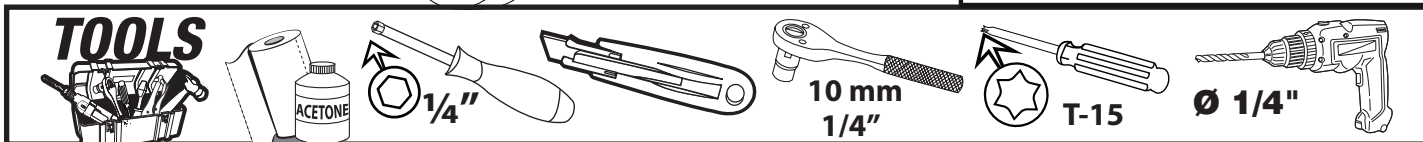


4X FENDER FLARE SET 16+ COLORADO
PART # : 102025

We recommend 2 persons for installation
AFTER INSTALLING

! DO NOT WASH CAR **! DRIVE SLOWLY 25 mph max**

24 hrs



CHECK LIST

*Already installed in the part

ITEM	DESCRIPTION	DRAWING	AMOUNT
A	*SUPER BOLTS RUBBER STUDS		18 PCS
B	*STAINLESS SUPER BOLT M6 X 14		40 PCS
C	*STAINLESS LOCKNUT M6		20 PCS
D	*RUBBER SPACER M7		6 PCS
E	RUBBER SPACER M15		4 PCS
F	AUTOMOTIVE ADHESION PROMOTER TESA # 60153		1 PC
G	APPLICATION SPONGE		1 PC
H	GREASE PENCIL		1 PC
I	PVC TRIM		33 FT
J	HEX. BOLT 5/32" X 1 1/4"		10 PCS
K	WASHER 3/16"		10 PCS
L	U-CLIP		12 PCS
M	THREADLOCKER #3222		1 PC
N	PUSH PINS WÜRTH 46		2 PCS
O	BONE FOLDER		1 PC



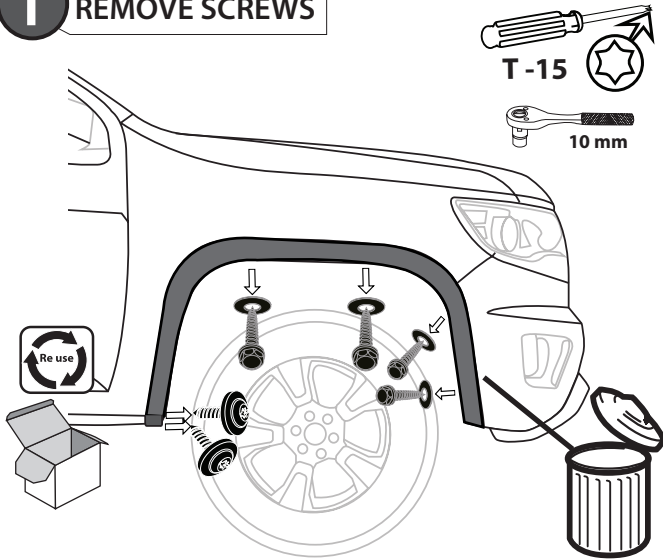
GM - COLORADO 2015

INSTALLATION MANUAL

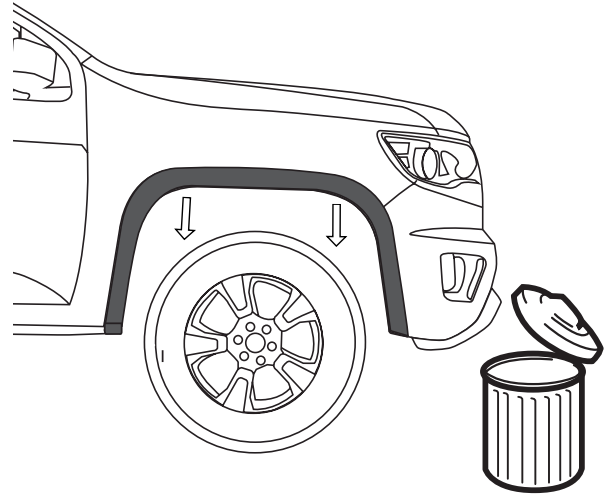
FRONT RIGHT & LEFT FLARE

! WASH WITH WATER, DETERGENT AND SOFT CLOTH OR SPONGE

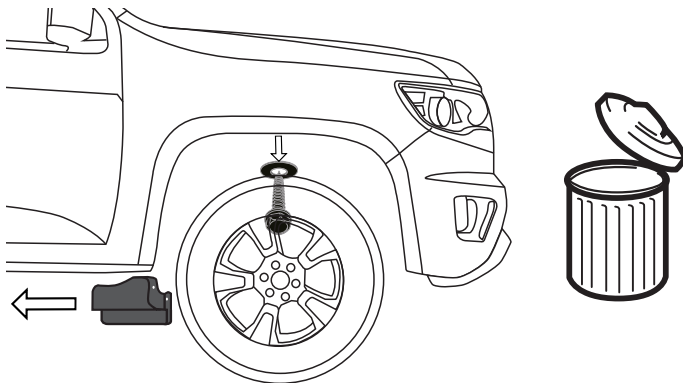
1 REMOVE SCREWS



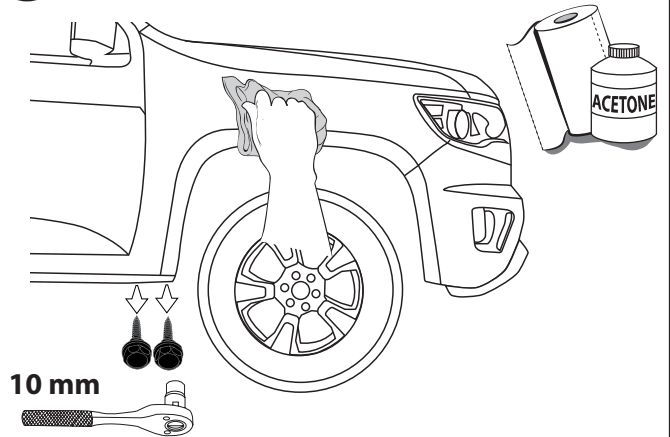
2 REMOVE WHEEL ARCHES



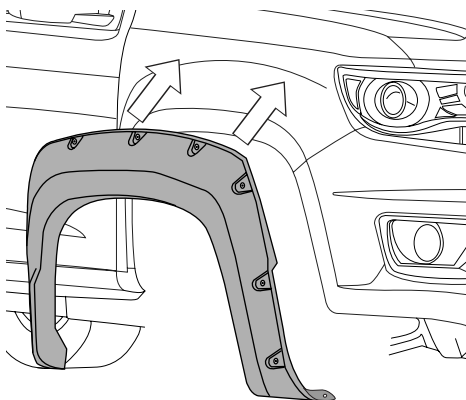
3 REMOVE MUD GUARDS & SCREW



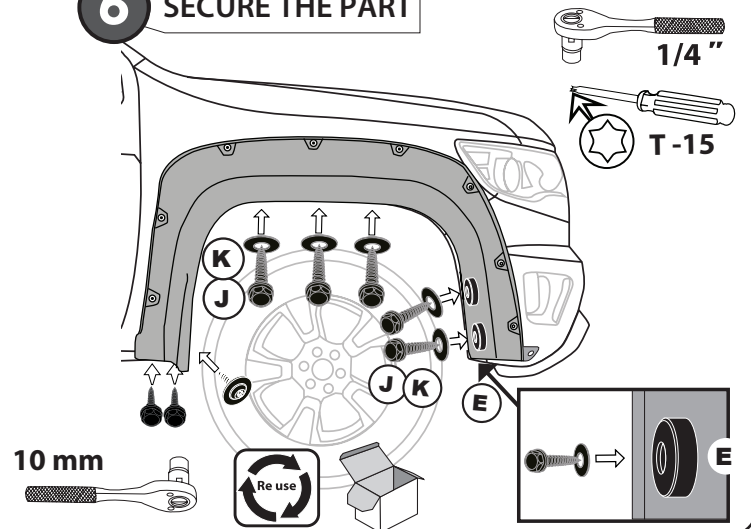
4 REMOVE HEX. SCREWS & CLEAN



5 PRE-MOUNT



6 SECURE THE PART

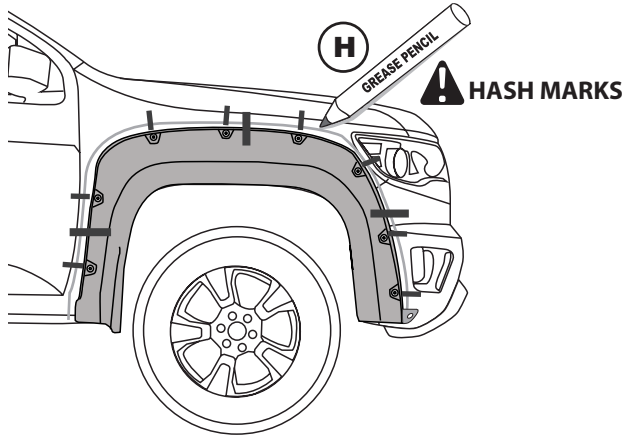




GM - COLORADO 2015

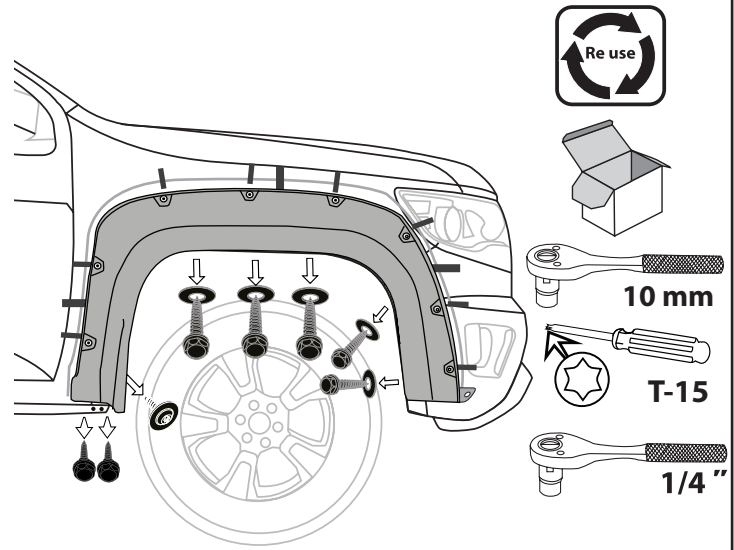
INSTALLATION MANUAL

7 MARK SILHOUETTE & SUPER BOLTS POSITION

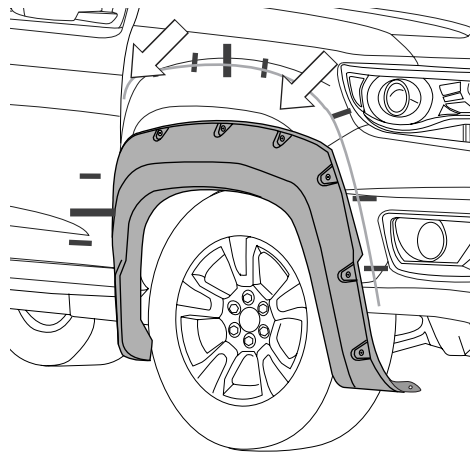


DRAW CENTER HASH MARK WITH GREASE PENCIL AT CENTER, BOTH SIDES, ON EACH SUPER BOLT AND SHEET METAL. THIS WILL ENSURE WHEEL FLARE WILL BE CENTERED TO GREASE PENCIL OUTLINE.

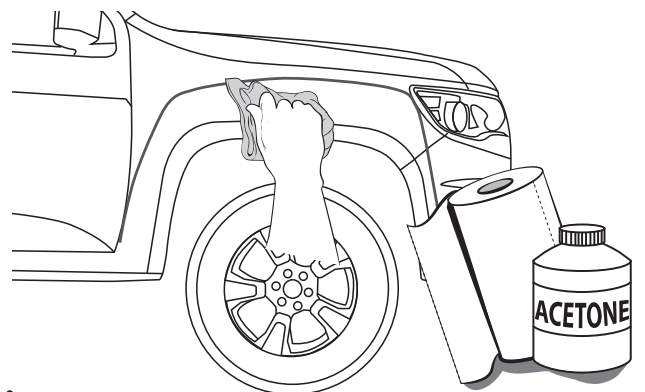
8 UNSCREW



9 REMOVE

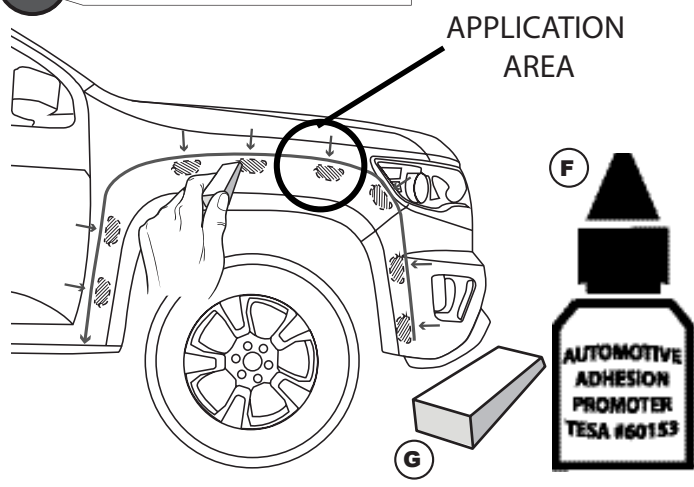


10 CLEAN



! FIRST CLEAN ALL OVER THE APPLICATION AREA WITH ACETONE

11 ADHESION PROMOTER

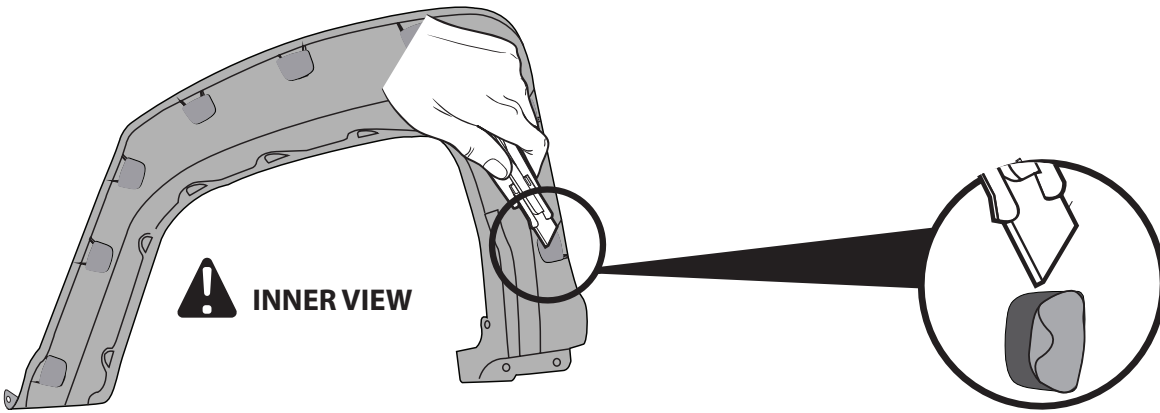


! WARM SURFACES WITH HEAT GUN IF SURFACE TEMPERATURE IS TOO COLD.

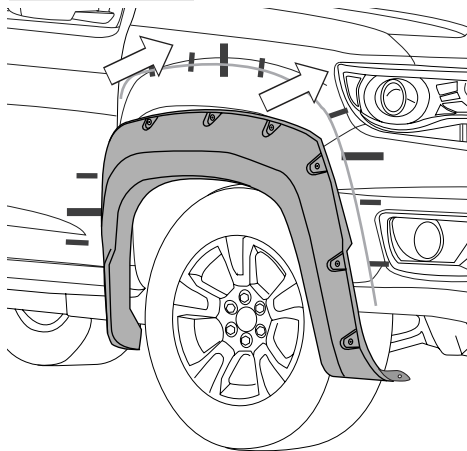
! A full surface contact between tape and substrate is decisive for good adhesion performance. Contact is achieved by applying pressure. In practice a pressure between 40 and 50 N/cm² is usually needed and an application temperature between 25 and 45 °C or 77 and 113 °F is also necessary. During application, add-on parts and tapes must have the similar temperature.



12 REMOVE LINER

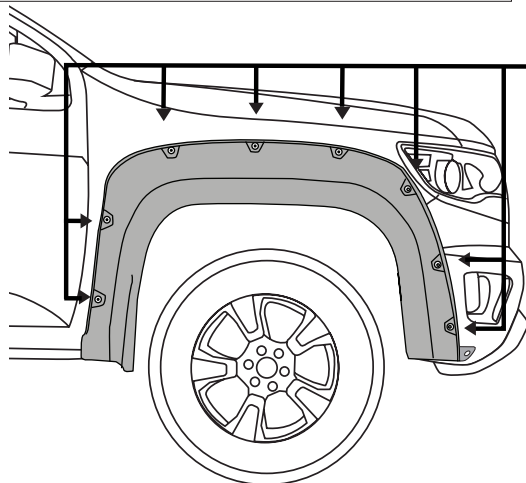


13 PRE-MOUNT

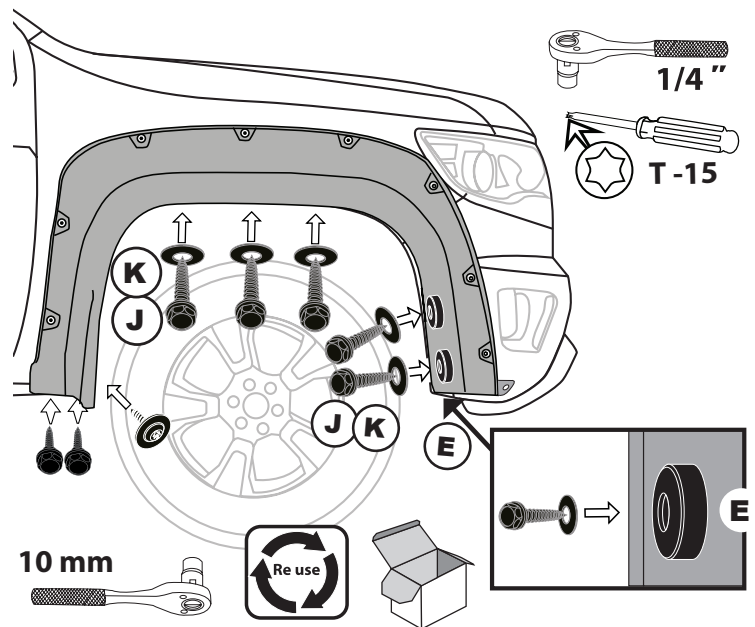


! ALIGN WHEEL FLARE TOP EDGE WITH THE GREASE PENCIL HASH MARKS AND PLACE.

15 APPLY PRESSURE ON EACH SUPER BOLT



14 SECURE THE PART

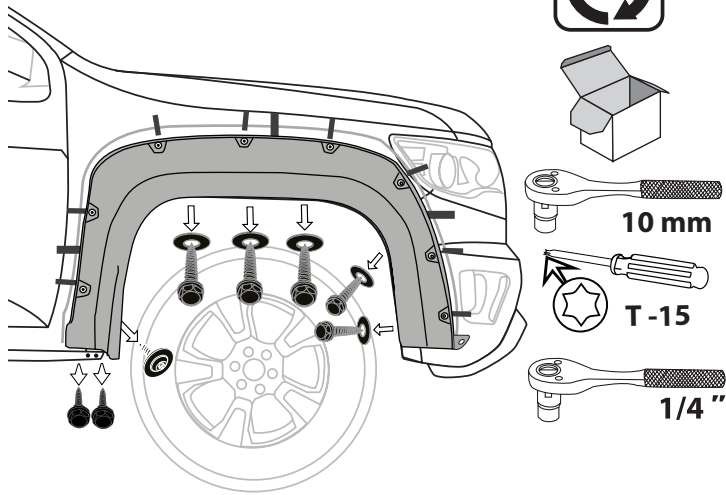




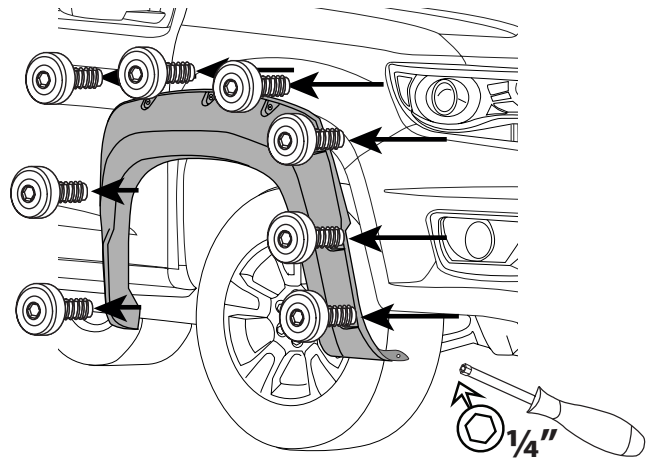
GM - COLORADO 2015

INSTALLATION MANUAL

16 UNSCREW

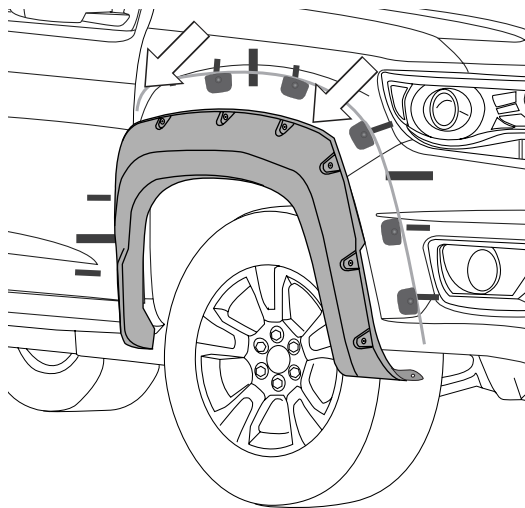


17 REMOVE SUPER BOLTS (B)



ONLY THE ONES WITH RUBBER STUD

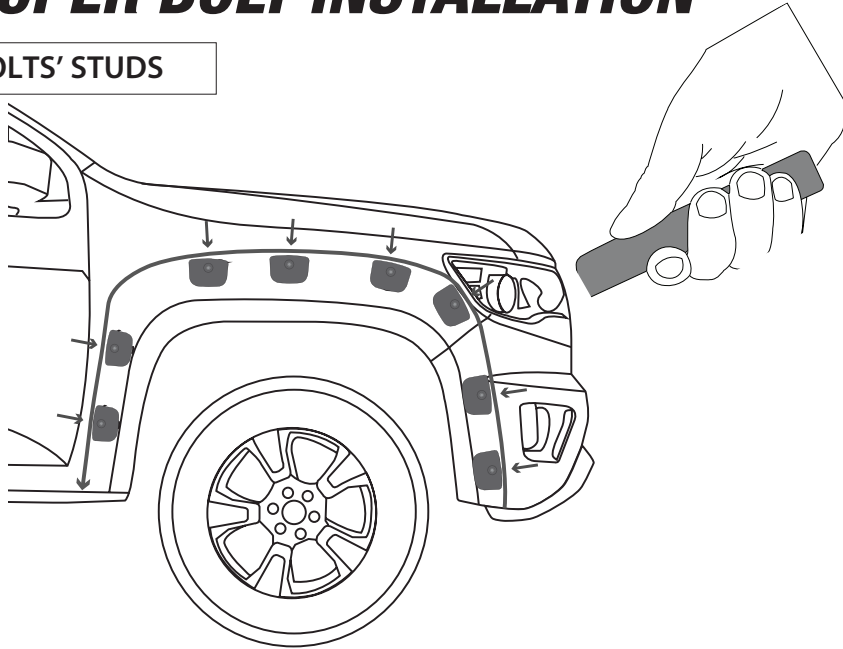
18 REMOVE





SUPER BOLT INSTALLATION

19 PRESS SUPER BOLTS' STUDS



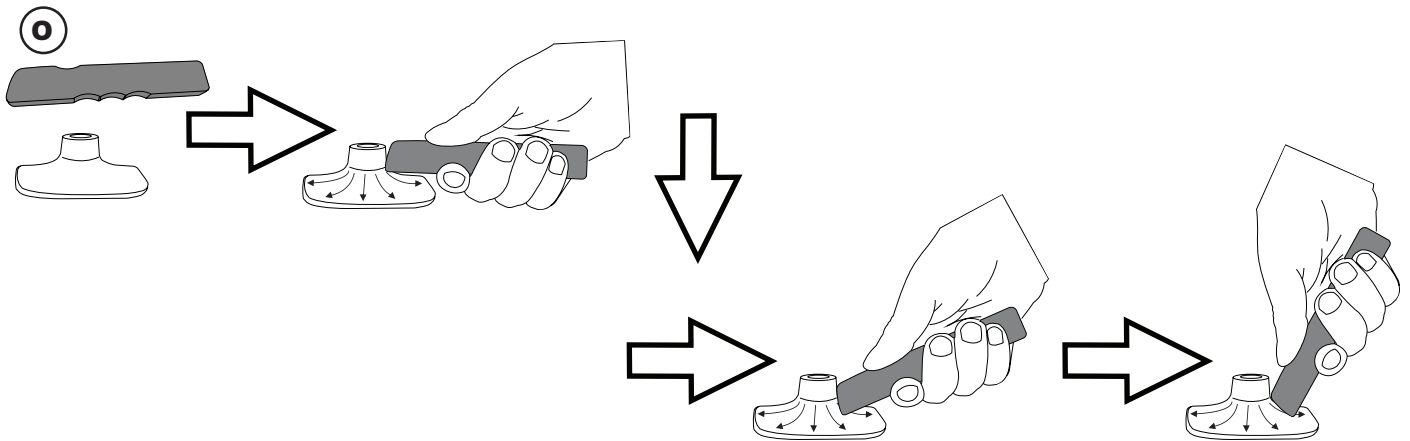
ATTENTION

FULL SURFACE CONTACT IS CRITICAL FOR GOOD ADHESION PERFORMANCE. ALWAYS APPLY FIRM PRESSURE WHEN MOUNTING ADD ON PARTS AND TAPES.



58 - 72 PSI

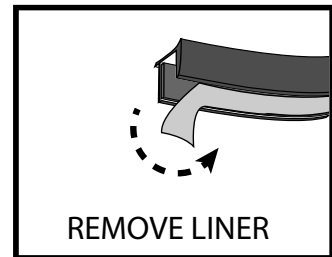
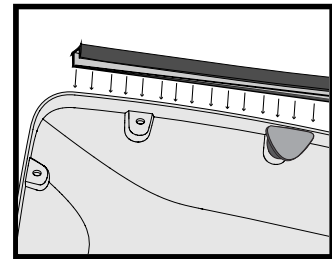
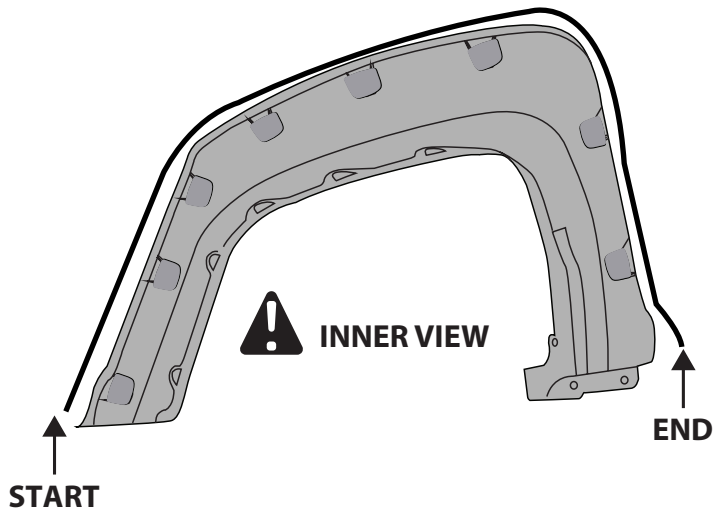
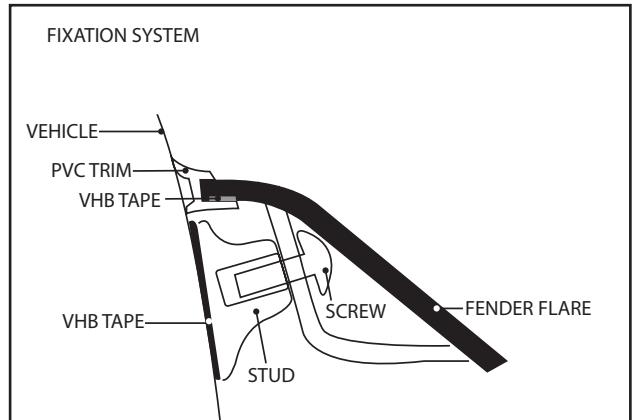
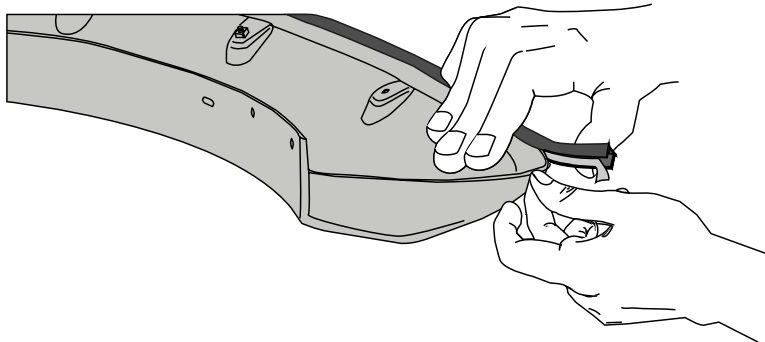
SUPER BOLT STUDS



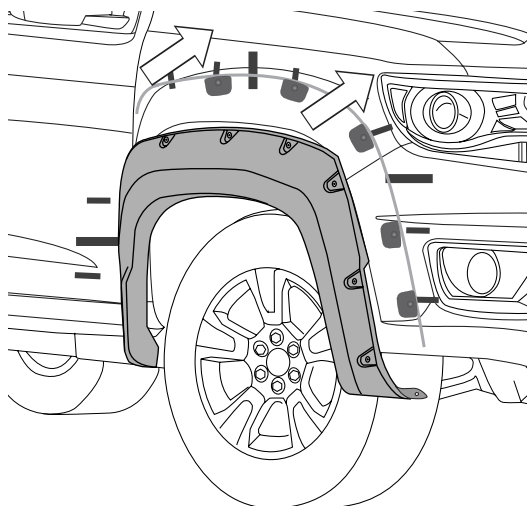
PRESSURE POINTS



20 PLACE PVC TRIM

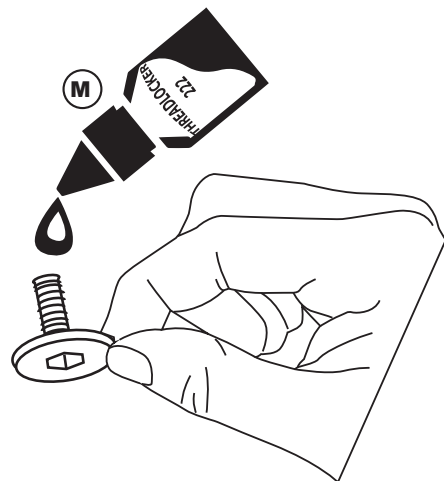


21 PLACE



ATTENTION

22 APPLY LOCTITE THREADLOCKER TO SUPER BOLT'S THREAD

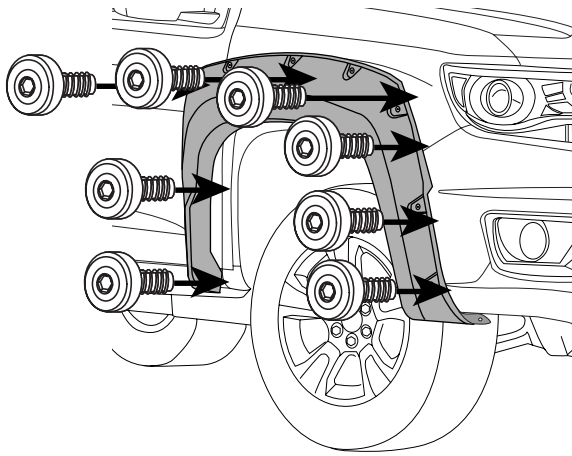




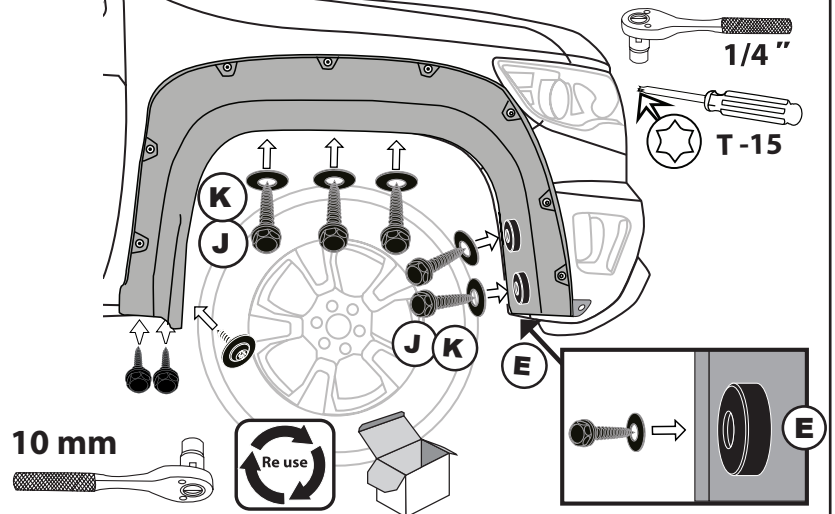
GM - COLORADO 2015

INSTALLATION MANUAL

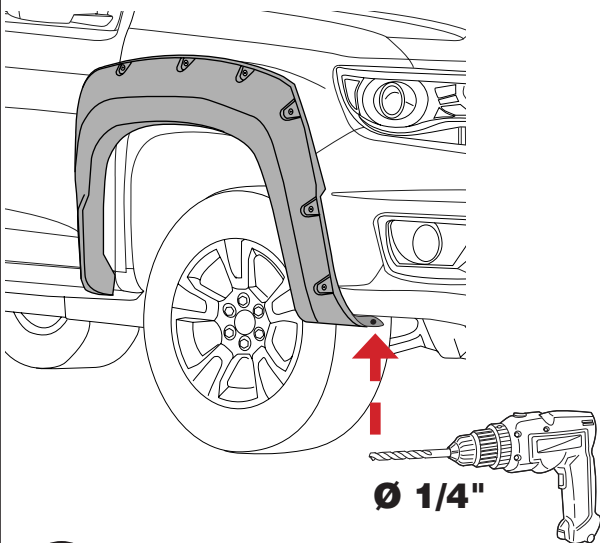
23 PLACE SUPER BOLTS



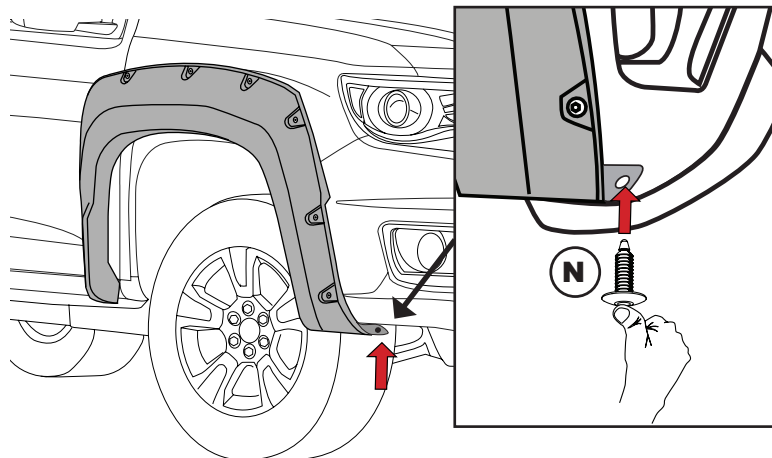
24 SECURE THE PART



25 DRILL



26 PLACE PUSH PIN



Always use extreme caution when drilling on any vehicle. Make sure that all fuel lines, brake lines, electrical wires, and other objects are not punctured or damaged when/if drilling on the vehicle. Thoroughly inspect the area to be drilled (on both sides of material) prior to drilling, and relocate any objects that may be damaged. Failure to inspect the area to be drilled may result in vehicle damage, electrical shock, fire or personal injury.

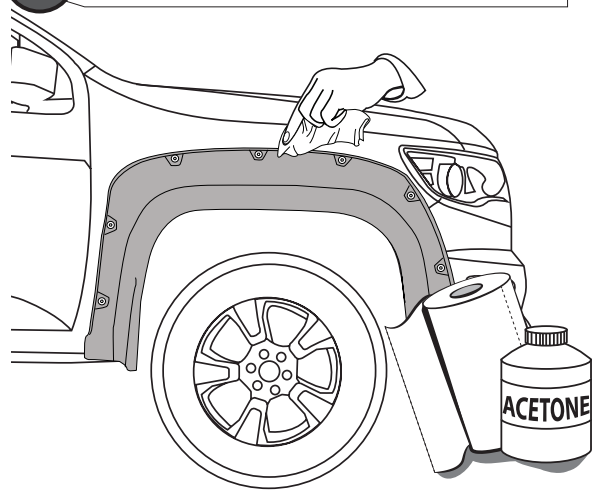
Always wear safety glasses when installing this kit. A drilling operation will cause flying metal chips. Flying chips can cause eye injury. Always use extreme caution when cutting and trimming during fitting.



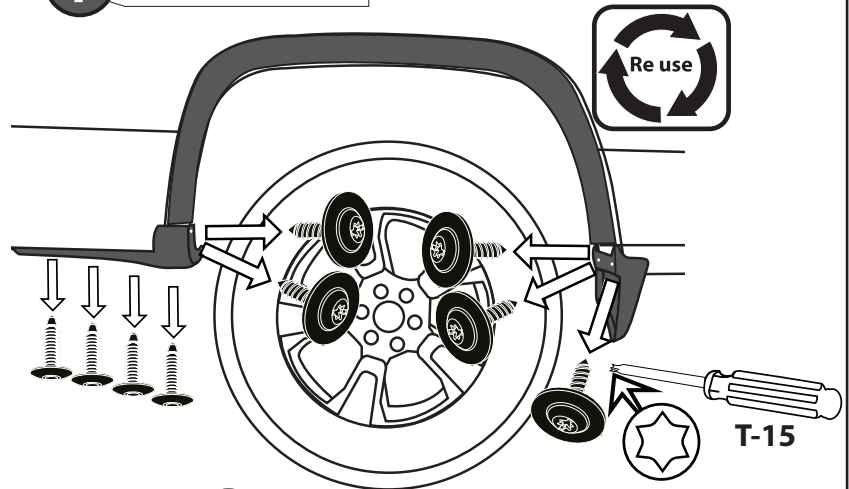
GM - COLORADO 2015

INSTALLATION MANUAL

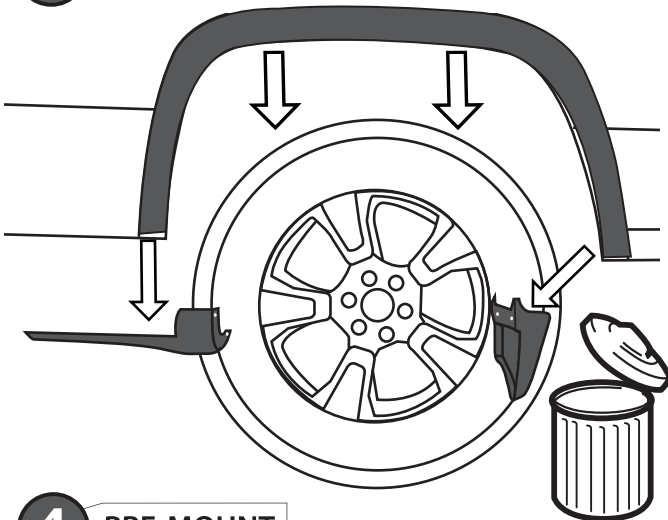
27 CLEAN OFF GREASE PENCIL MARK



1 REMOVE SCREWS



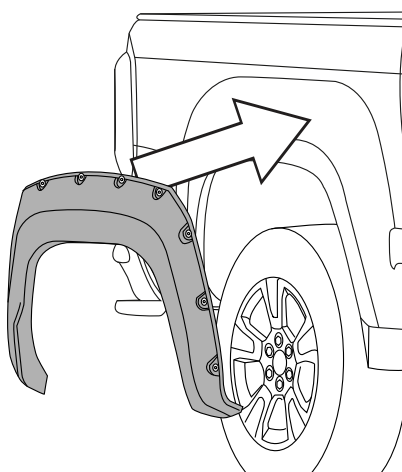
2 REMOVE MUD GUARDS & WHEEL ARCHES



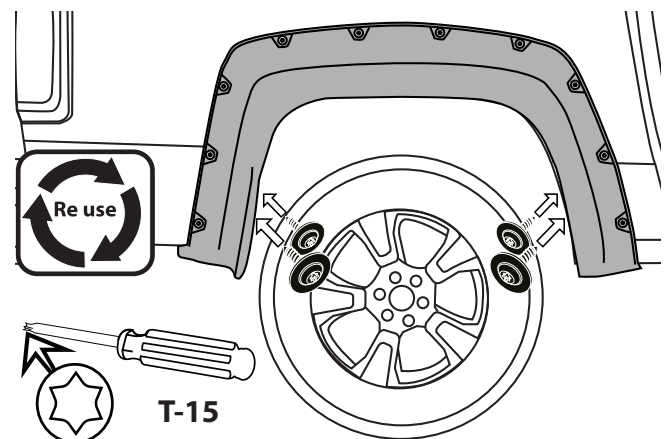
3 CLEAN



4 PRE-MOUNT



5 SECURE THE PART

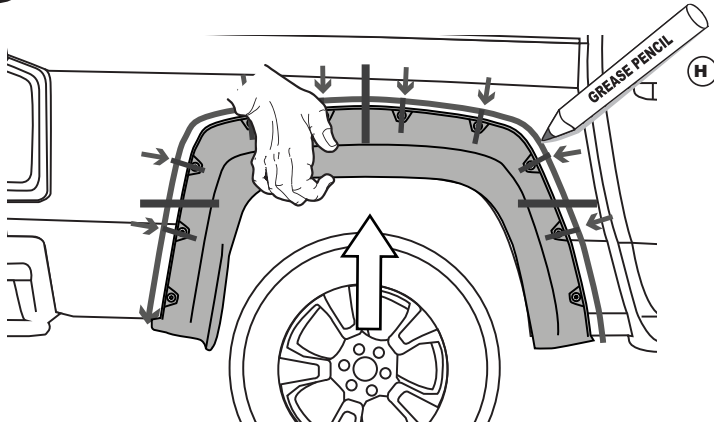




GM - COLORADO 2015

INSTALLATION MANUAL

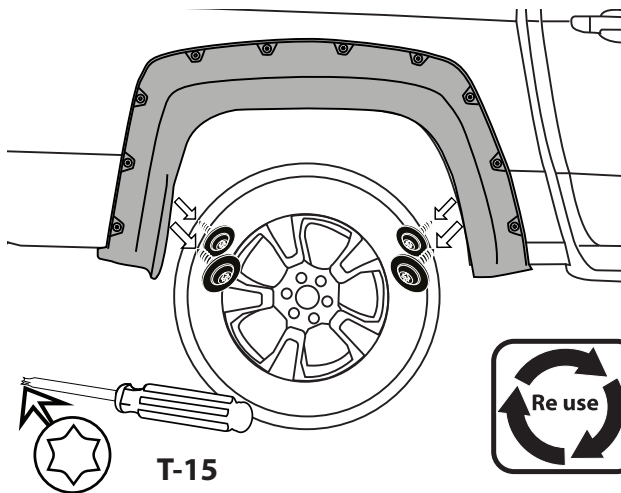
6 MARK SILHOUETTE & SUPER BOLTS POSITION



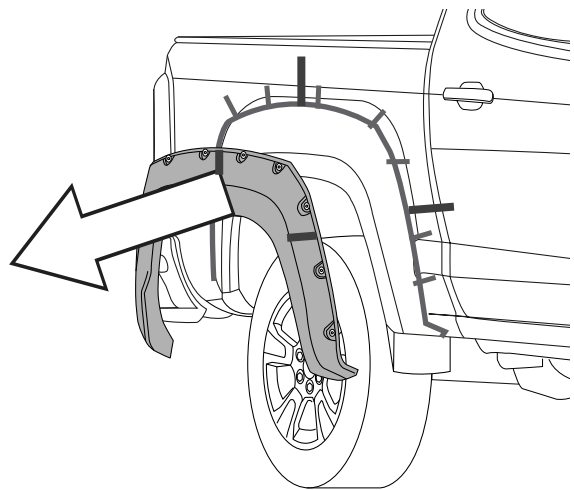
HASH MARKS

DRAW CENTER HASH MARK WITH GREASE PENCIL AT CENTER, BOTH SIDES, ON EACH SUPER BOLT AND SHEET METAL. THIS WILL ENSURE WHEEL FLARE WILL BE CENTERED TO GREASE PENCIL OUTLINE.

7 UNSCREW



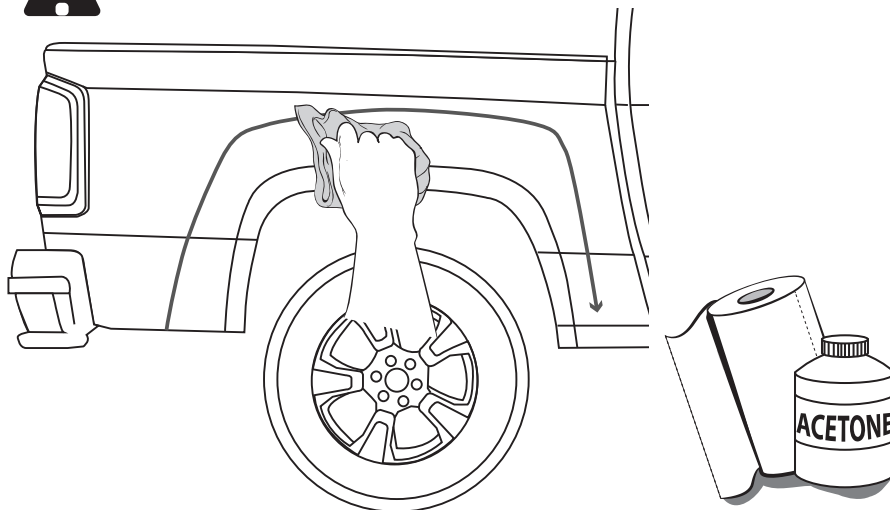
8 REMOVE



9 CLEAN

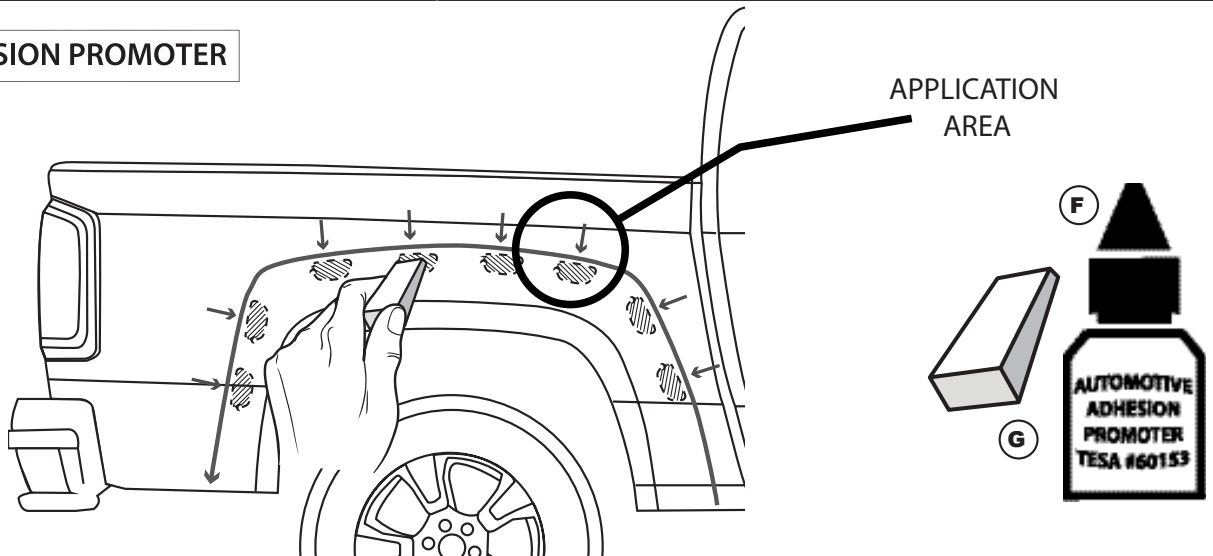


FIRST CLEAN ALL OVER THE APPLICATION AREA WITH ACETONE

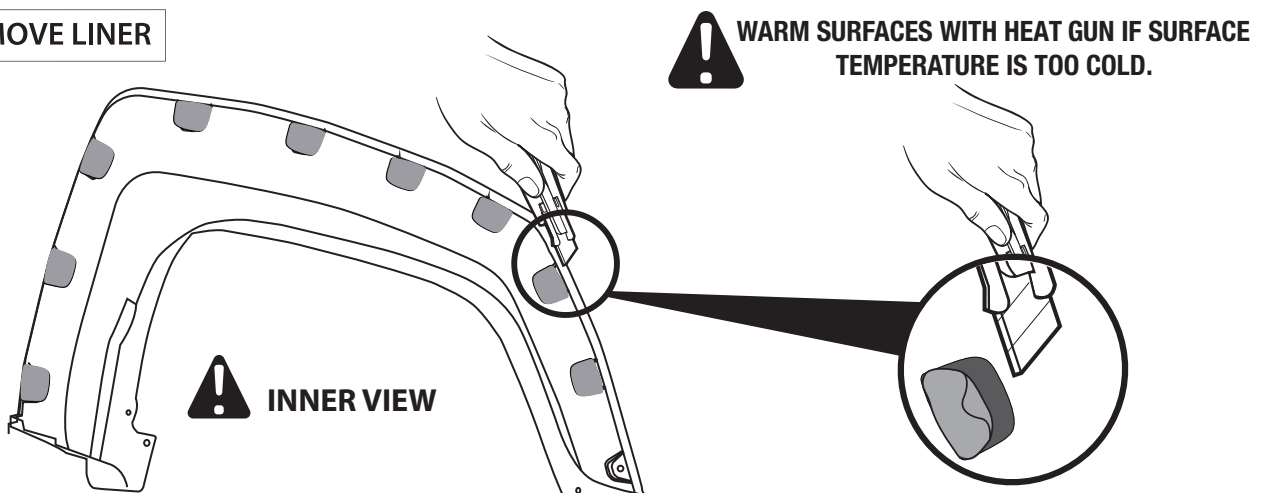




10 ADHESION PROMOTER

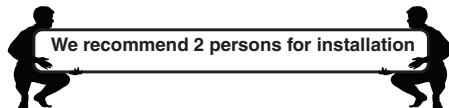


11 REMOVE LINER

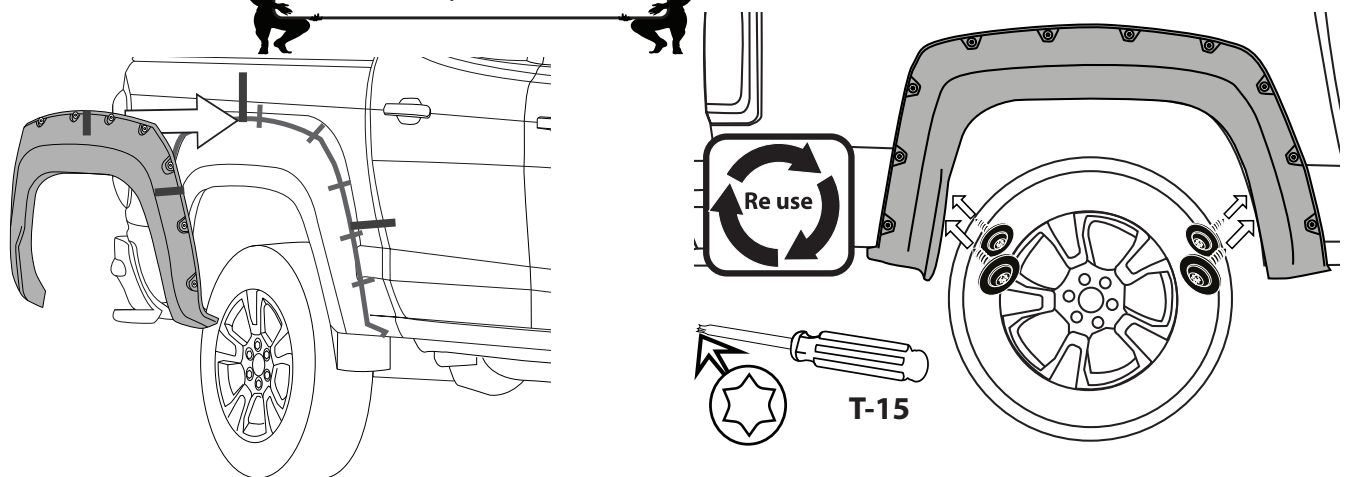


! ALIGN WHEEL FLARE TOP EDGE WITH THE GREASE PENCIL HASH MARKS AND PLACE.

12 PRE-MOUNT

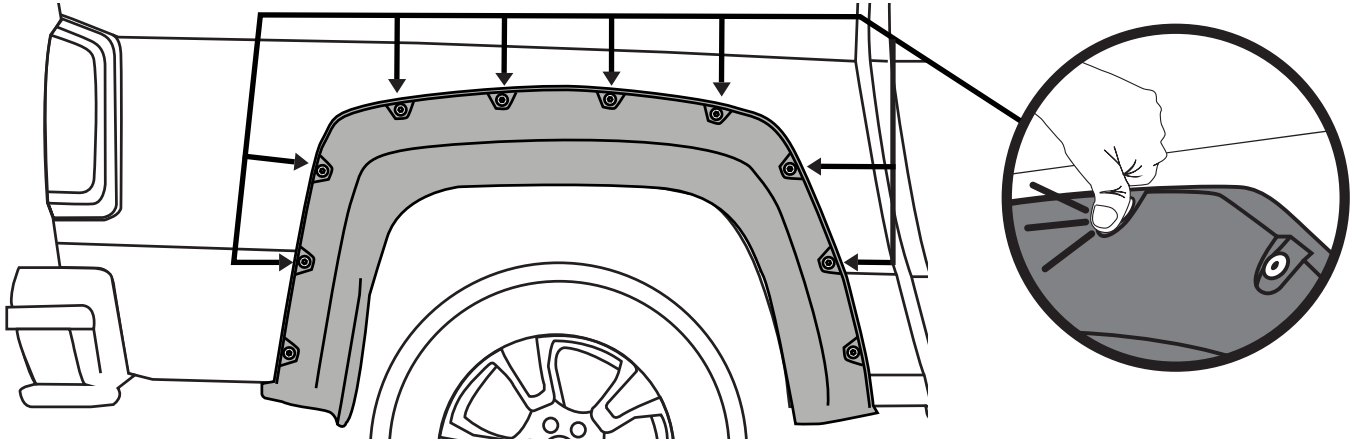


13 SECURE THE PART

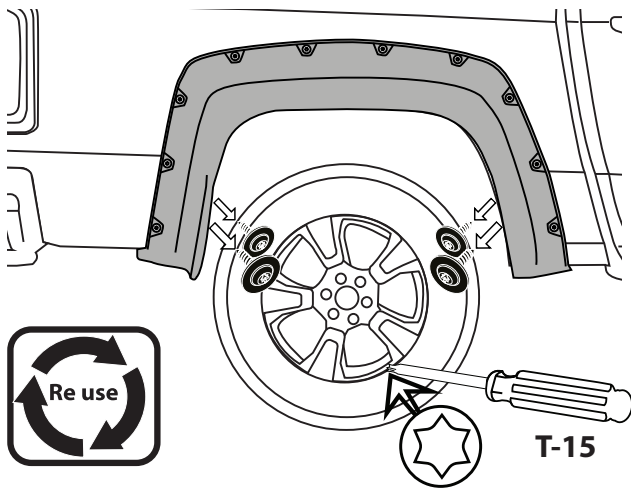




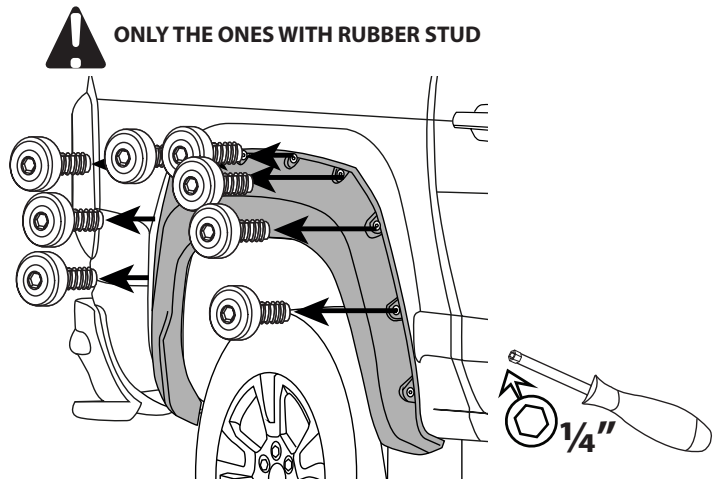
14 APPLY PRESSURE ON EACH SUPER BOLT



15 UNSCREW & REMOVE THE PART



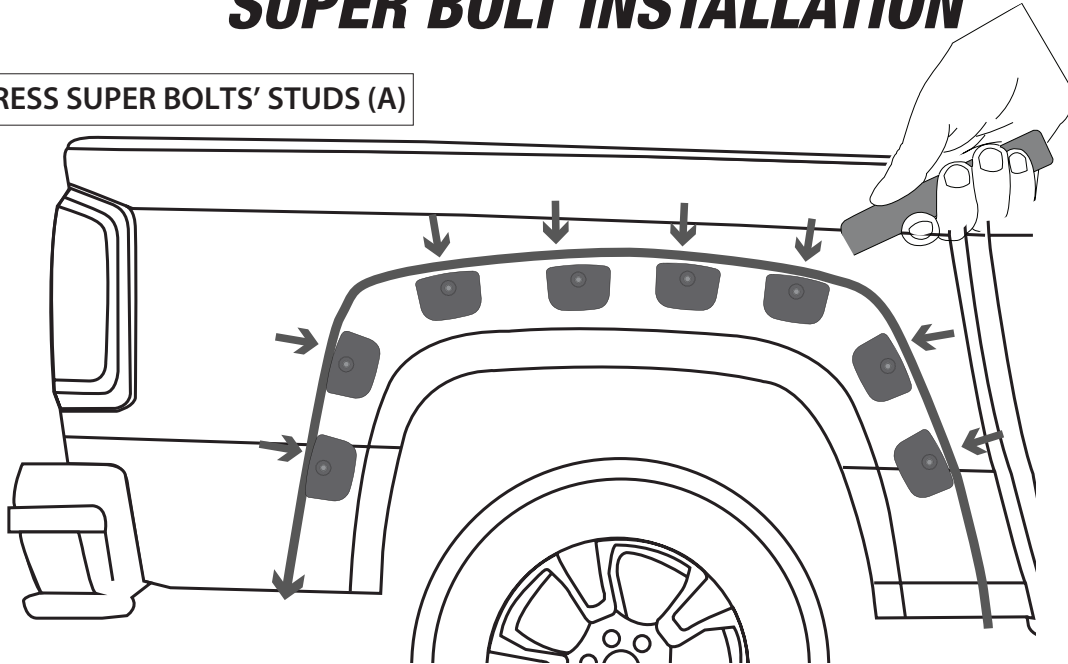
16 REMOVE SUPER BOLTS (B)





SUPER BOLT INSTALLATION

17 PRESS SUPER BOLTS' STUDS (A)



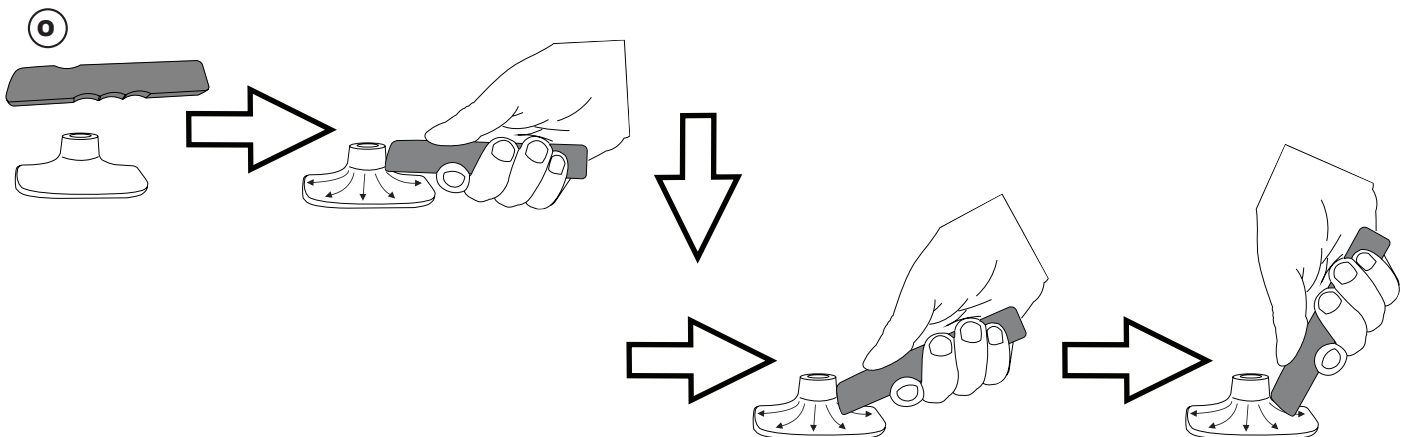
ATTENTION

FULL SURFACE CONTACT IS CRITICAL FOR GOOD ADHESION PERFORMANCE. ALWAYS APPLY FIRM PRESSURE WHEN MOUNTING ADD ON PARTS AND TAPES.



58 - 72 PSI

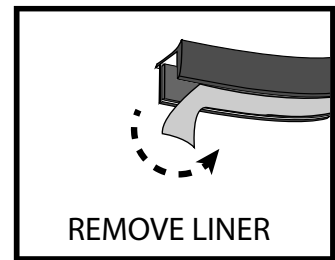
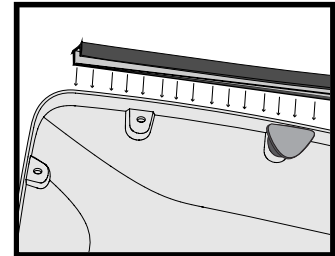
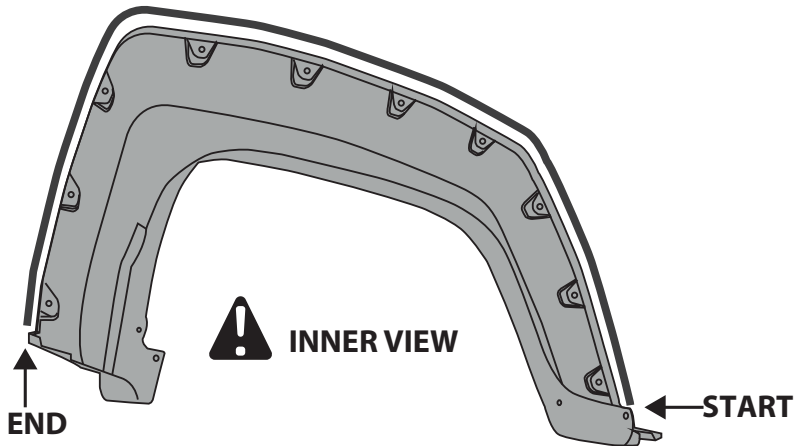
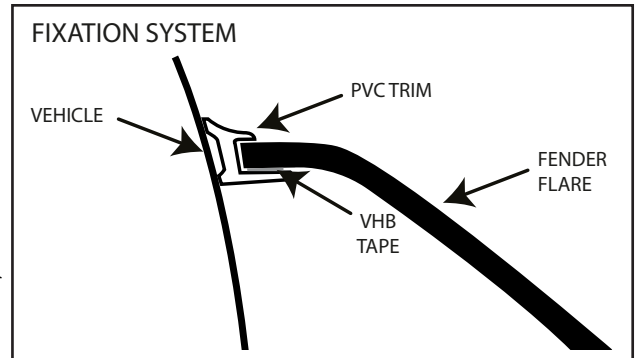
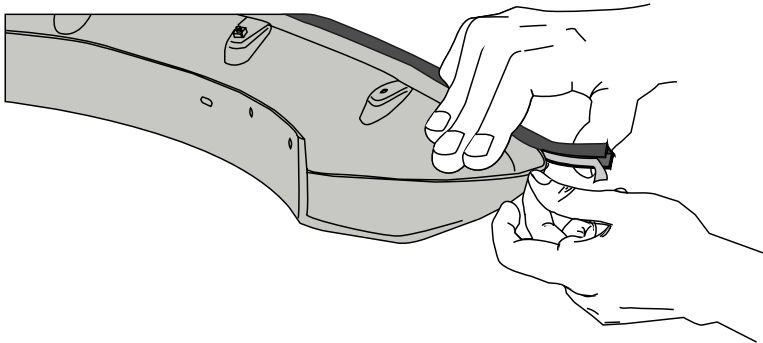
SUPER BOLT STUDS



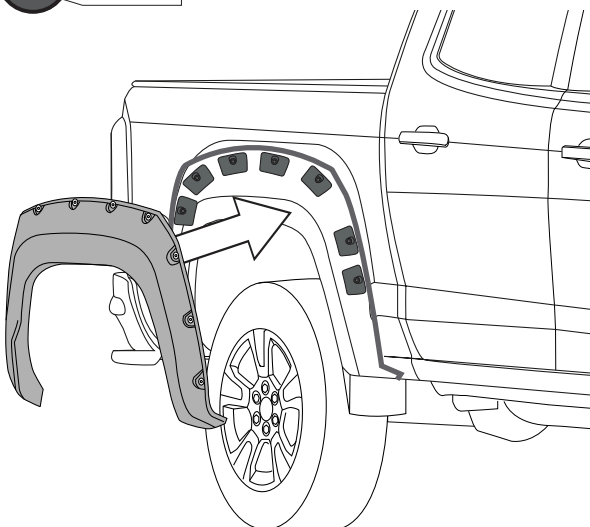
PRESSURE POINTS



18 PLACE PVC TRIM

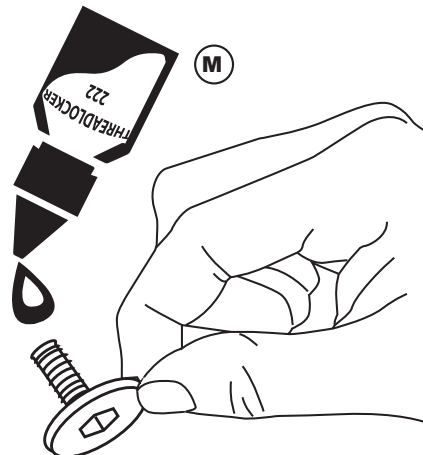


19 PLACE



20 APPLY LOCTITE THREADLOCKER TO SUPER BOLT'S THREAD

! ATTENTION

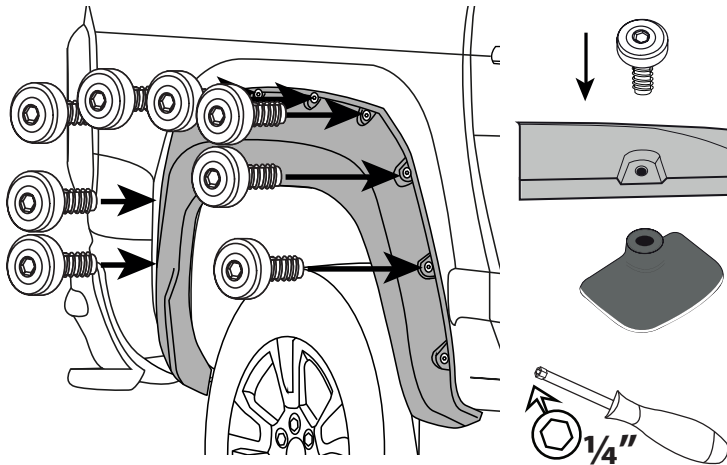




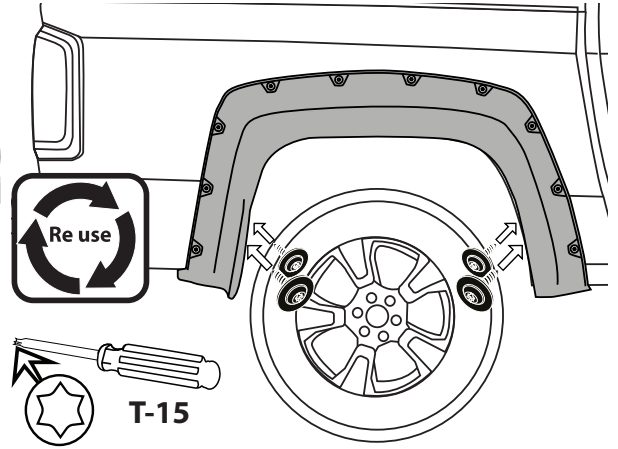
GM - COLORADO 2015

INSTALLATION MANUAL

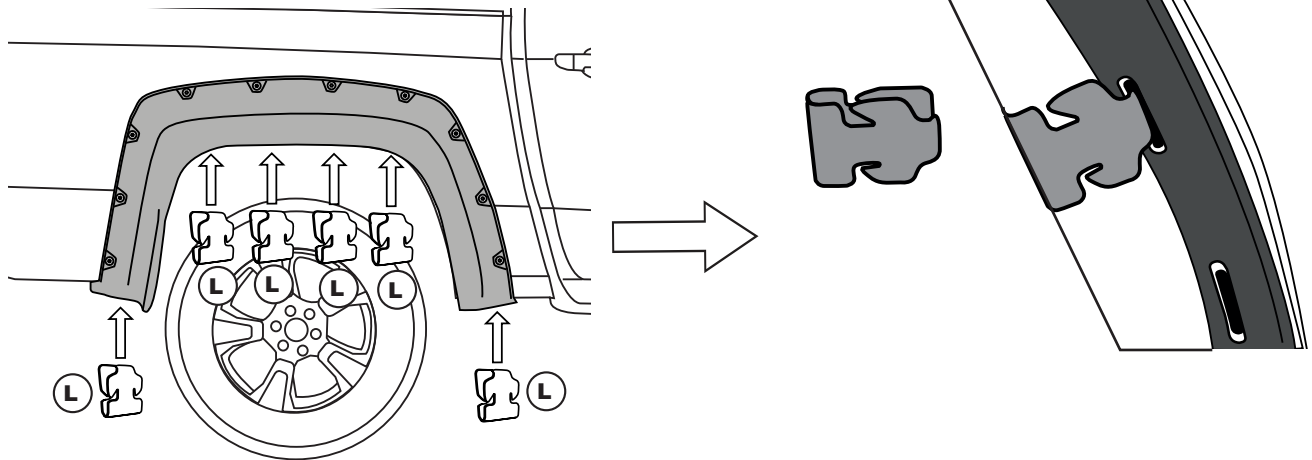
21 PLACE SUPER BOLTS (B)



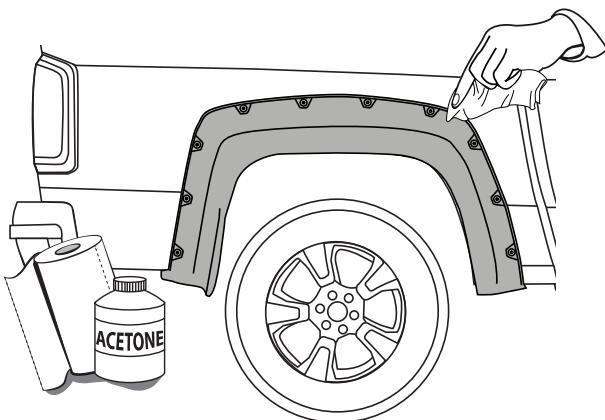
22 SECURE THE PART



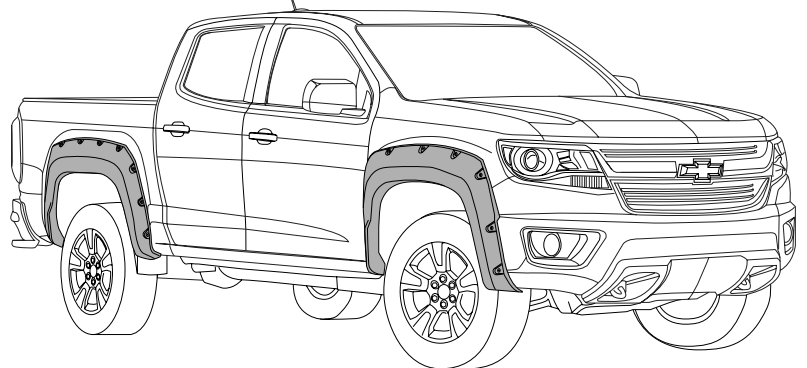
23 PLACE U-CLIPS



24 CLEAN OFF GREASE PENCIL MARK



INSTALLED PARTS



REPEAT ALL STEPS FOR RH SIDE