



WAGNERTUNING

Installation Instruction

Intercooler

BMW E Series 335I EVO2

Competition



Kit-Nr.: 200001044

WAGNERTUNING

Important Notes!

These Installation Instruction have to be read careful before beginning installation work. The company WAGNERTUNING bears no liability for damage caused by incorrect installation!

As manufacturer, we are obliged to point out that any changes you make to a vehicle licensed for use on public roads require approval by a test centre and registration in the vehicle documents.

Installation Time (1 unit = 5 minutes)

*The installation time is around **36 units**, which may vary depending on vehicle condition and equipment level.*

Tools Required

- various spanners*
- various screwdrivers*
- car body saw*

WAGNERTUNING

Part list:

- 1 *Competition intercooler*
- 1 *reinforced silicone hose (inlet)*
- 1 *silicone hose (outlet)*
- 1 *aluminum hose adapter*
- 1 *hose Clamp 50 - 70 mm*
- 4 *hose Clamp 60 - 80 mm*
- 2 *hanger bolt*
- 2 *hex nut M6*
- 2 *plastic washer*



WAGNERTUNING

1. demounting

The deinstallation of the intercooler is done according to the guidelines of the automobile manufacturer.

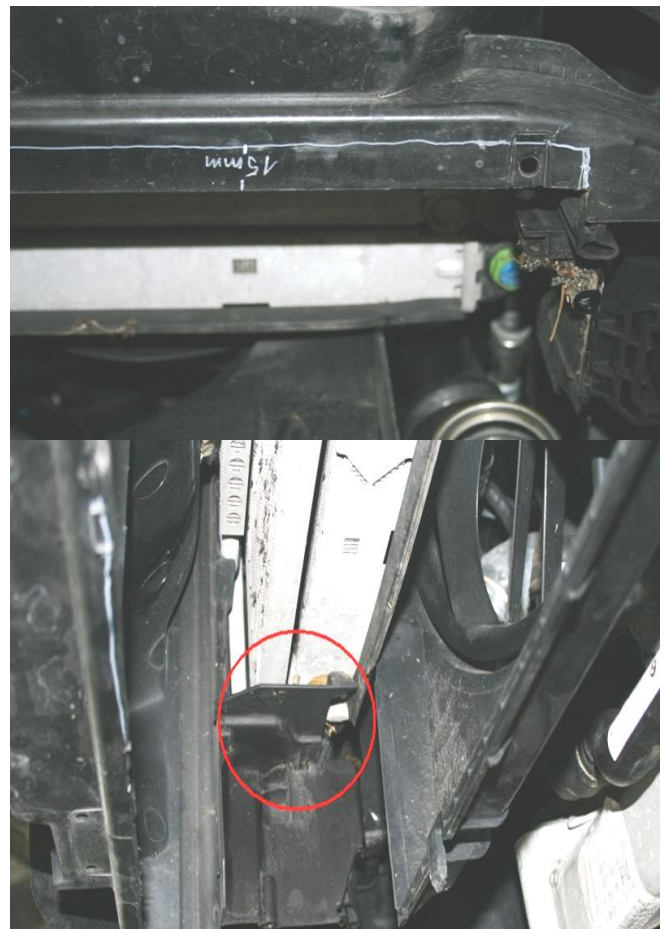
*You have to remove the following parts:
Underbody, front bumper, the OEM intercooler.
Info: in this series there are two different versions of hoses from the intercooler outlet (as in the picture). Remove the hose which is fitted in your car.*



2. adjustments

Cut a 15 mm wide strip of 550 mm length from the bottom of the lock holder / front panel using a suitable tool.

Remove the shown plastic part.



3. installation

Mount the aluminum adapter as in the picture.

It is recommended to first thread the hose on the driver side (UK) / passenger side (Europe & USA) from the bottom to the top. Then push the hose on to the tube which comes out of the turbos. Slide the clamps over the hoses, then fit the Intercooler, push it on the hoses and tighten the clamps.

Check all parts for proper fit and install the OEM front bumper and underbody.



Notes:

